

# SWAROVSKI ELEMENTS

INSPIRATIONS & INNOVATIONS  
PRE-SEASON  
FALL/WINTER 2014/15



*designers' choice* SINCE 1895

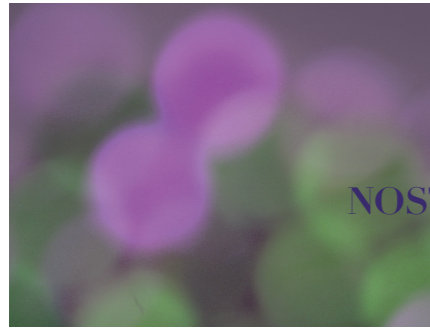
# NATURAL BEAUTIES

With environmental change and the mega-trend of neo-ecology increasingly in the limelight, our Pre-Launch innovations are a timely reminder of the strength and fragility of nature and a tangible, radiant reminder of our role as her guardian.

With these beautiful blends, we embrace one of the most spectacular phenomena in nature – the changing of the season. Paying homage to the wonder and beauty found here on earth, they capture the sweeping seasonal changes of merging natural colors, all captured in brilliant radiant crystal.

This is the story of our world: the earth and her beauty, the seasonal change and the sweeping landscapes that inspire and intrigue us. A moment in time, captured forever.

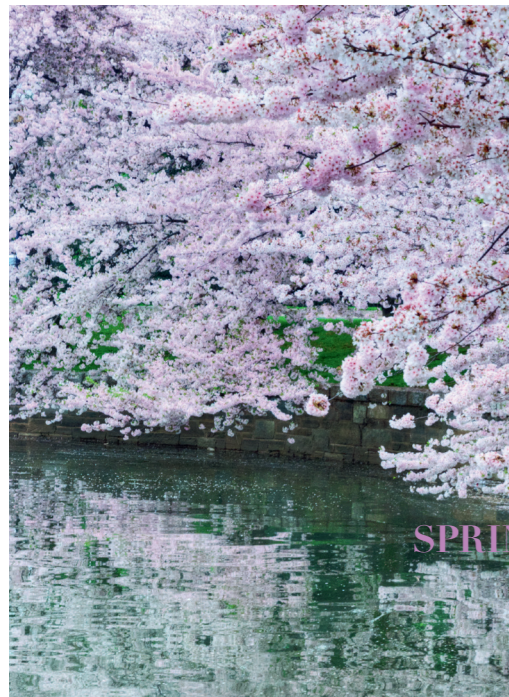




NOSTALGIC



EMOTIVE



SPRING/SUMMER

### THE MOOD

The changing of the seasons has come heavily into focus over the past few decades, with issues such as global warming raising major concerns.

The focus on the magnificence of the shifting seasons serves as a visual reminder of the wonder of nature and the attention we need to pay to the planet.

These beautiful crystal blends highlight the need to create an even deeper awareness of our environment and the desperate need to slow down global warming.

Softened, bleached colors convey a nostalgic feel and highlight the returning trend of taking inspiration from the washed-out and faded colours of materials such as Polaroids.

The design world is also highlighting the importance of blended colors, as reflected in the current fashion of dip-dye for hair, fabrics, and even make-up.

The southern and northern hemispheres experience polar opposite seasonal changes – the beauty of these blends is that they appeal to both hemispheres in equal measure.

“Splicing” is a major trend movement – splicing, stacking, layering, and blending to show shifting levels of color. The top half appears sweet, reassuring, and familiar, while the bottom is tough and provocative. (WGSN)



ICY

GLACIAL



FALL/WINTER

FEMININE





### **PROVENCE LAVENDER- CHRYSLITE BLEND**

Provence Lavender is combined with the subtle beauty of Chrysolite Opal, offering an exquisite, almost nostalgic feel.

Capturing the merging of late spring into summer, the color is reminiscent of lavender fields swaying in the late afternoon sun, with the soft, sorbet shade adding an overtly feminine feel to any design.



### **CRYSTAL- MONTANA BLEND**

The plunging depths of deep Montana blue are merged with pure crystal to create a blend reminiscent of glacial mountain ranges. Melting snowcaps and frozen lakes come together in the icy radiance of this crystal, evoking a winter wonderland frozen in time.



40 515 ROMU



## COMBINATION POSSIBILITIES

Find out the many amazing ways of mixing the feminine and subtle Provence Lavender-Chrysolite Blend with other SWAROVSKI ELEMENTS.

4527 539 F



4470 283 F



27004 390



6106 726



3015 212 M



4439 001 VL



40 515 SIMU



2708 001 AB F



4789 001 LUMG F



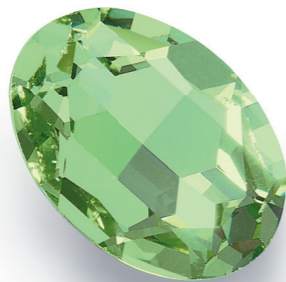
40 515 LSMU



4227 001 AB F



4127 238 F



5000 238



1088 261 F



4120 261 F



3254 001 F



6026 001

40 515 CRMU



5028/4 001 BLSH

## COMBINATION POSSIBILITIES

Be inspired by the numerous ways in which the glacial-like Crystal-Montana Blend can be combined with the current assortment of SWAROVSKI ELEMENTS.

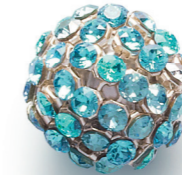
4224 001 F



6106 725



40 515 BLMU



5928 207 STEEL



1811/100 086 266



40 515 BKMU



4230 001 BLSH F

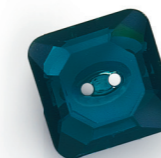


40 519 BLDE



6919 001 SINI

3017 207 M



4795 266 F



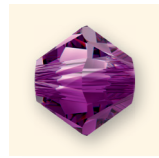
40 519 BKDE



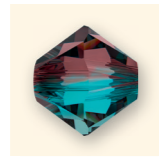


# Beads

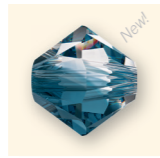
## Available Crystal Blend Colors



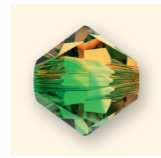
Amethyst Blend (721)



Burgundy-Blue Zircon Blend (723)



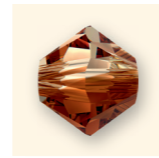
Crystal-Montana Blend (725)



Fern Green-Topaz Blend (724)

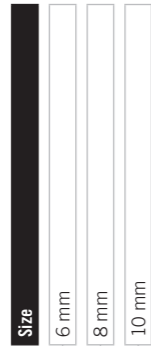
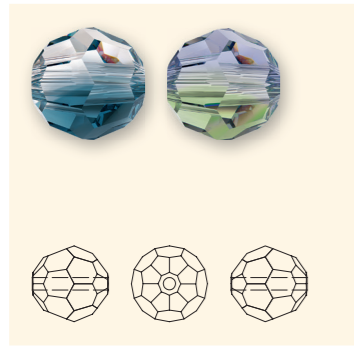


Provence Lavender-Chrysolite Blend (726)



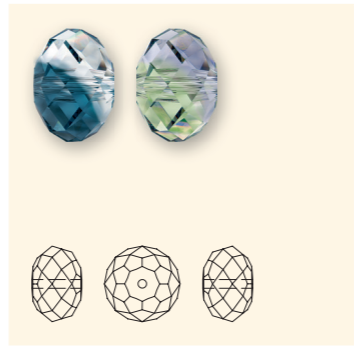
Topaz Blend (722)

### 5000



Crystal Blend Color	6 mm	8 mm	10 mm
Amethyst Blend (721)	■	■	■
Burgundy-Blue Zircon Blend (723)	■	■	■
Crystal-Montana Blend (725)	■	■	■
Fern Green-Topaz Blend (724)	■	■	■
Provence Lavender-Chrysolite Blend (726)	■	■	■
Topaz Blend (722)	■	■	■

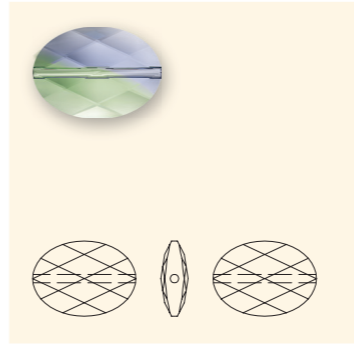
### 5040 Briolette Bead



Crystal Blend Color	6 mm	8 mm	12 mm
Amethyst Blend (721)	■	■	■
Burgundy-Blue Zircon Blend (723)	■	■	■
Crystal-Montana Blend (725)	■	■	■
Fern Green-Topaz Blend (724)	■	■	■
Provence Lavender-Chrysolite Blend (726)	■	■	■
Topaz Blend (722)	■	■	■

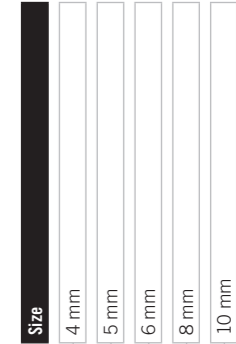
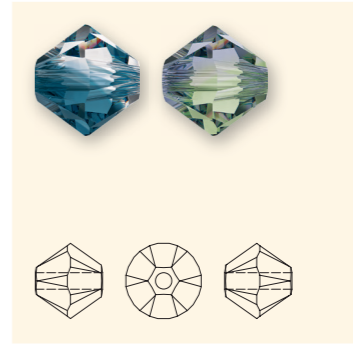
# Beads

## 5050 Oval Bead



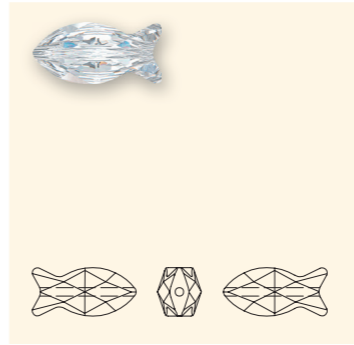
Crystal Blend Color	14x10 mm	22x16 mm
Provence Lavender-Chrysolite Blend (726)	■	■

## 5328 XILION Bead



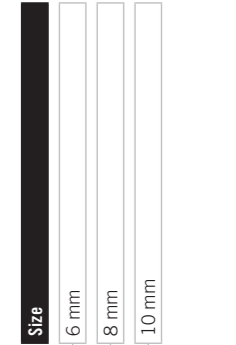
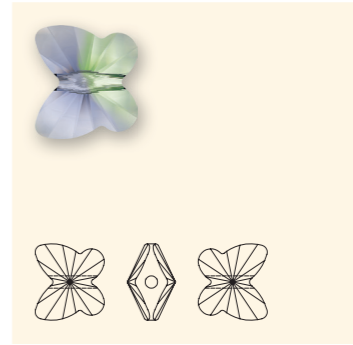
Crystal Blend Color	4 mm	5 mm	6 mm	8 mm	10 mm
Amethyst Blend (721)	■	■	■	■	■
Burgundy-Blue Zircon Blend (723)	■	■	■	■	■
Crystal-Montana Blend (725)	■	■	■	■	■
Fern Green-Topaz Blend (724)	■	■	■	■	■
Provence Lavender-Chrysolite Blend (726)	■	■	■	■	■
Topaz Blend (722)	■	■	■	■	■

## 5727 Fish Bead



Crystal Blend Color	14 mm
Amethyst Blend (721)	■
Topaz Blend (722)	■

## 5754 Butterfly Bead



Crystal Blend Color	6 mm	8 mm	10 mm
Amethyst Blend (721)	■	■	■
Provence Lavender-Chrysolite Blend (726)	■	■	■
Topaz Blend (722)	■	■	■



# Beads

## 40 512 Crystal Mesh Ball



S 12 mm  
M 12 PCS 100%

## 40 515 Crystal Mesh Ball

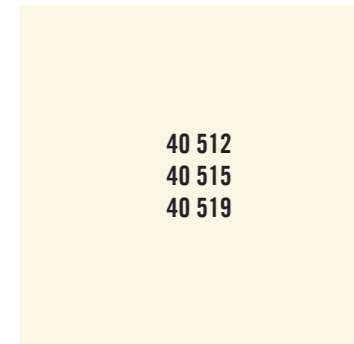


S 15 mm  
M 12 PCS 100%

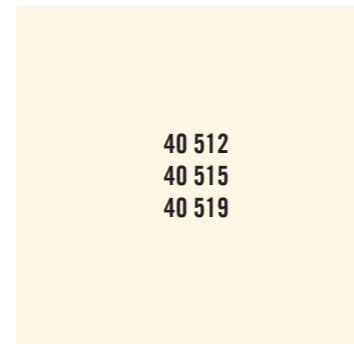
## 40 519 Crystal Mesh Ball



S 19 mm  
M 6 PCS 100%



Ring Configuration	0 no jump ring*	1 with 1 jump ring**	
Sizes	40512 12 mm	40515 15 mm	40519 19 mm



Ring Configuration	0 no jump ring*	1 with 1 jump ring**	
Sizes	40512 12 mm	40515 15 mm	40519 19 mm

### Multicolors

- Black Multi (BKMU)<sup>1</sup>  
Crystal Black Pearl (001 298)  
Casing Color: 012 Black
- Blue Multi (BLMU)<sup>2</sup>  
Crystal Light Grey Pearl (001 616)  
Casing Color: 082 Silver
- Crystal Multi (CRMU)<sup>3</sup>  
Crystal Cream Pearl (001 620)  
Casing Color: 082 Silver
- Light Silk Multi (LSMU)<sup>4</sup>  
Crystal Gold Pearl (001 296)  
Casing Color: 082 Silver
- Light Rose Multi (LRMU)<sup>5</sup>  
Crystal Powder Rose Pearl (001 352)  
Casing Color: 082 Silver
- Silk Multi (SIMU)<sup>6</sup>  
Crystal Rose Gold Pearl (001 769)  
Casing Color: 082 Silver
- Rose Multi (ROMU)<sup>7</sup>  
Crystal Powder Rose Pearl (001 352)  
Casing Color: 081 Gold

### Degradées

- Black Degradée (BKDE)<sup>8</sup>  
Crystal Black Pearl (001 298)  
Casing Color: 012 Black
- Blue Degradée (BLDE)<sup>9</sup>  
Crystal Night Blue Pearl (001 818)  
Casing Color: 012 Black
- Silk Degradée (SIDE)<sup>10</sup>  
Crystal Peach Pearl (001 300)  
Casing Color: 082 Silver

\* The used thread enables a comfortable identification of the hole position and is not meant to be used for further application.  
\*\* The color of the jump ring is preestablished and can be seen in the article number. On special request the Crystal Mesh Ball can also be supplied with 2 jump rings.

<sup>1</sup> Black Multi consists of Jet, Jet Hematite, Crystal Silver Night F.  
<sup>2</sup> Blue Multi consists of Aquamarine F, Light Turquoise F, Crystal Blue Shade F.  
<sup>3</sup> Crystal Multi consists of Crystal F, Crystal Moonlight F, Crystal AB.  
<sup>4</sup> Light Silk Multi consists of Crystal AB F, Crystal Luminous Green F, Crystal Golden Shadow F.  
<sup>5</sup> Light Rose Multi consists of Crystal Antique Pink F, Light Rose F, Vintage Rose F.  
<sup>6</sup> Silk Multi consists of Silk F, Crystal Rose Gold, Light Silk F.  
<sup>7</sup> Rose Multi consists of Light Rose F, Rose F, Indian Pink F.

<sup>8</sup> Black Degradée consist of Crystal, Crystal Silver Shade, Greige, Black Diamond, Crystal Silver Night.  
<sup>9</sup> Blue Degradée consist of Crystal, Crystal Blue Shade, Indian Sapphire, Denim Blue, Montana.  
<sup>10</sup> Silk Degradée consist of Crystal, Light Silk, Silk, Light Peach, Vintage Rose.

# Beads

## Available Crystal Mesh Balls Multicolors



## Available Crystal Mesh Balls Degradées



# Pendants

## 6010 Briolette Pendant



Crystal Blend Color	Amethyst Blend (721)	Burgundy-Blue Zircon Blend (723)	Crystal-Montana Blend (725)	Fern Green-Topaz Blend (724)	Provence Lavender-Chrysolite Blend (726)	Topaz Blend (722)
---------------------	----------------------	----------------------------------	-----------------------------	------------------------------	--	-------------------

<sup>1</sup> Amethyst Blend (721)  
<sup>2</sup> Burgundy-Blue Zircon Blend (723)  
<sup>3</sup> Crystal-Montana Blend (725)  
<sup>4</sup> Fern Green-Topaz Blend (724)  
<sup>5</sup> Provence Lavender-Chrysolite Blend (726)  
<sup>6</sup> Topaz Blend (722)

## 6106 Pear-shaped Pendant



Crystal Blend Color	Amethyst Blend (721)	Burgundy-Blue Zircon Blend (723)	Crystal-Montana Blend (725)	Fern Green-Topaz Blend (724)	Provence Lavender-Chrysolite Blend (726)	Topaz Blend (722)
---------------------	----------------------	----------------------------------	-----------------------------	------------------------------	--	-------------------

<sup>1</sup> Amethyst Blend (721)  
<sup>2</sup> Burgundy-Blue Zircon Blend (723)  
<sup>3</sup> Crystal-Montana Blend (725)  
<sup>4</sup> Fern Green-Topaz Blend (724)  
<sup>5</sup> Provence Lavender-Chrysolite Blend (726)  
<sup>6</sup> Topaz Blend (722)



## Pendants

### 6228 XILION Heart Pendant

**Size**  
10.3x10 mm  
14.4x14 mm  
18x17.5 mm

**Crystal Blend Color**

- Amethyst Blend (721)
- Crystal-Montana Blend (725)
- Provence Lavender-Chrysolite Blend (726)
- Topaz Blend (722)

### 6754 Butterfly Pendant

**Size**  
18 mm

**Crystal Blend Color**

- Amethyst Blend (721)
- Topaz Blend (722)

## Sew-on Articles

### 3210 Oval Sew-on Stone

**Size**  
10x7 mm  
16x11 mm

**Crystal Blend Color**

- Crystal-Montana Blend (725)
- Crystal-Montana Blend F (725)
- Provence Lavender-Chrysolite Blend (726)
- Provence Lavender-Chrysolite Blend F (726)

### 3230 Drop Sew-on Stone

**Size**  
12x7 mm  
18x10.5 mm

**Crystal Blend Color**

- Burgundy-Blue Zircon Blend (723)
- Crystal-Montana Blend (725)
- Crystal-Montana Blend F (725)
- Fern Green-Topaz Blend (724)
- Provence Lavender-Chrysolite Blend (726)
- Provence Lavender-Chrysolite Blend F (726)

## Cupchains & Findings

### BeCharmed Bracelet

Combine the stylish new SWAROVSKI ELEMENTS BeCharmed Bracelet with your personal choice of BeCharmed Pavés, Beads, Pearls and Rondelles. It opens a huge range of style statements.

### Article Explanation

#### 80 000 BeCharmed Bracelet



<b>S</b>	180 mm	
<b>M</b>	6 PCS	66%

80 000	S	M	66%
Article number	Size	Minimum order quantity in pieces (PCS)	Documentation size in %

### Ordering Example & Product Variety Explanation

1	80 000	180 mm	H
Metal Type	Article number	Size	Plating color
1 Brass		Size of Bracelet (Length)	H Rhodium Plating*

#### 80 000 BeCharmed Bracelet



#### Color of Casing

H Rhodium Plating

\* Anti nickel allergenic

DECEMBER



NOVEMBER



OCTOBER



## BIRTH STONES

SEPTEMBER



AUGUST



JULY



JANUARY



FEBRUARY



MARCH



Historical records of travelers' discoveries point to birthstones first being worn as personal ornamentation in India.

Over time, certain stones came to be associated with the twelve signs of the zodiac and the twelve months of the year, and by the 15th century, wearing the gem appropriate to one's birthday was believed to give special powers.

Today, we are still drawn to their mythology and poetry, and it is these qualities that have been captured in the interplay of light from the BeCharmed collection's myriad facets of twelve colors and effects, each of which is designed to harmonize with the colors of the different birthstones.

APRIL



MAY

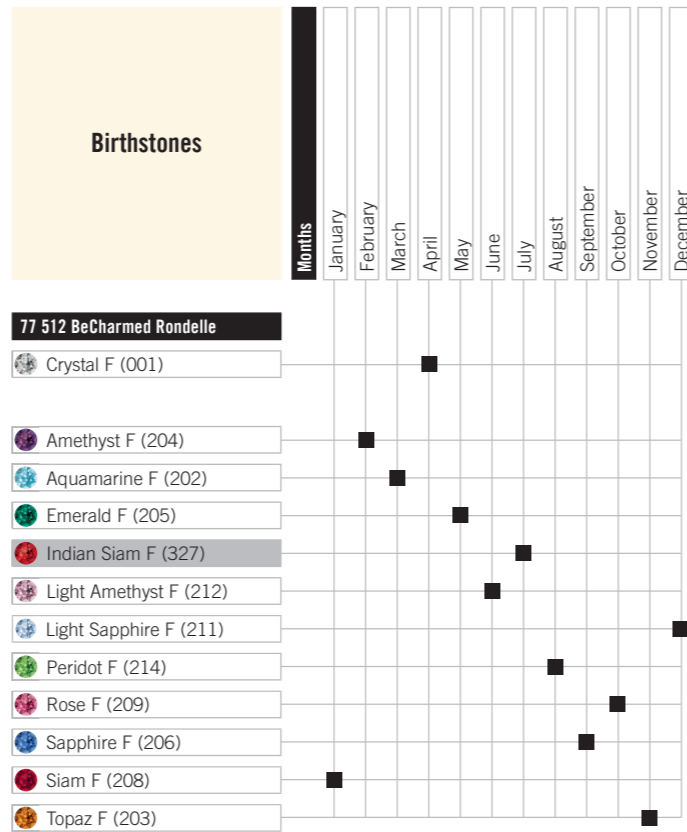


JUNE



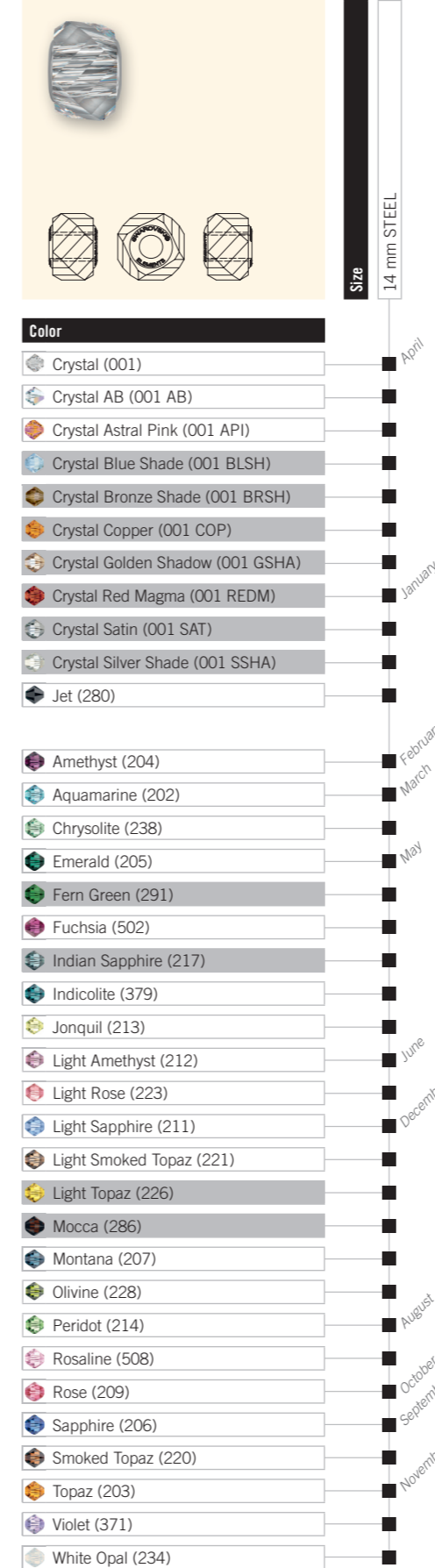


# Birthstones



# Birthstones

## 5928 BeCharmed Helix Bead



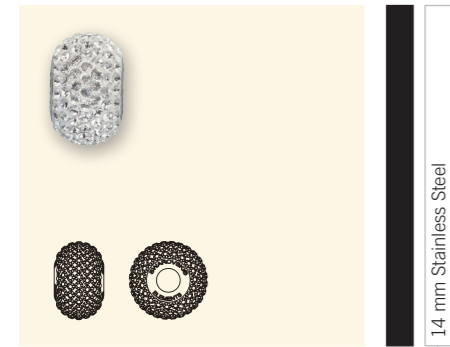
## 5948 BeCharmed Briolette Bead



\* The different shapes of the three BeCharmed Pavé articles (art. 80 101, 80 102, 80 103) are provided in the same Birthstone color for each month, except for "July", which has Indian Siam (327) for art. 80 101 and 80 103, and Light Siam (227) for art. 80 102.

# Birthstones

80 101 BeCharmed Pavé



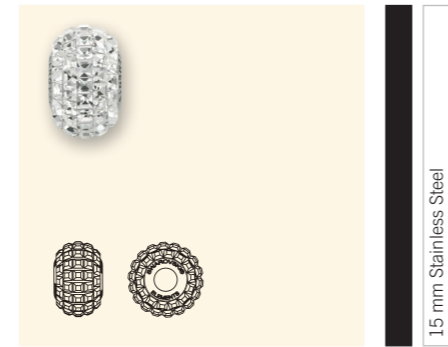
14 mm Stainless Steel

**Color**

- Crystal (001)
- White (01)
- Crystal AB (001 AB)
- White (01)
- Crystal Astral Pink (001 API)
- Shining Curry (12)
- Crystal Golden Shadow (001 GSHA)
- Pearl Silk (05)
- Crystal Luminous Green (001 LUMG)
- Pearl Silk (05)
- Crystal Silver Night (001 SINI)
- Black (02)
- Jet (280)
- Black (02)
- Jet Hematite (280 HEM)
- Black (02)
- Amethyst (204)
- Dark Lila (09)
- Aquamarine (202)
- Light Blue (11)
- Black Diamond (215)
- Silver (03)
- Emerald (205)
- Dark Green (13)
- Indian Siam (327)
- Shining Red (07)
- Jonquil (213)
- Gold (04)
- Light Amethyst (212)
- Mauve (14)
- Light Rose (223)
- Rose (06)
- Light Sapphire (211)
- Sky Blue (18)
- Peridot (214)
- Light Green (10)
- Rose (209)
- Rose (06)
- Sapphire (206)
- Dark Blue (15)
- Siam (208)
- Dark Red (16)
- Tanzanite (539)
- Purple (08)
- Topaz (203)
- Shining Curry (12)

April  
February  
March  
May  
July  
June  
December  
August  
October  
September  
January  
November

80 201 BeCharmed Pavé



15 mm Stainless Steel

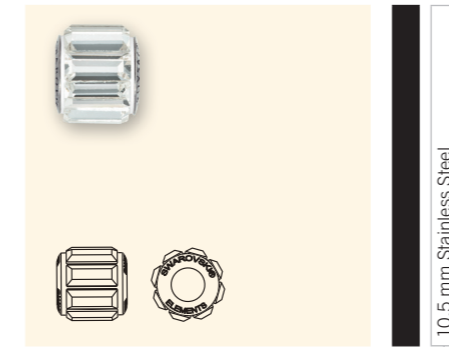
**Color**

- Crystal (001)
- White (01)
- Crystal AB (001 AB)
- White (01)
- Crystal Golden Shadow (001 GSHA)
- Pearl Silk (05)
- Crystal Luminous Green (001 LUMG)
- Pearl Silk (05)
- Crystal Silver Night (001 SINI)
- Black (02)
- Jet (280)
- Black (02)
- Jet Hematite (280 HEM)
- Black (02)
- Amethyst (204)
- Dark Lila (09)
- Aquamarine (202)
- Light Blue (11)
- Black Diamond (215)
- Silver (03)
- Emerald (205)
- Dark Green (13)
- Light Amethyst (212)
- Mauve (14)
- Light Rose (223)
- Rose (06)
- Light Sapphire (211)
- Sky Blue (18)
- Light Siam (227)
- Shining Red (07)
- Peridot (214)
- Light Green (10)
- Rose (209)
- Rose (06)
- Sapphire (206)
- Dark Blue (15)
- Siam (208)
- Shining Red (07)
- Tanzanite (539)
- Purple (08)
- Topaz (203)
- Shining Curry (12)

April  
February  
March  
May  
June  
December  
July  
August  
October  
September  
January  
November

# Birthstones

80 301 BeCharmed Pavé



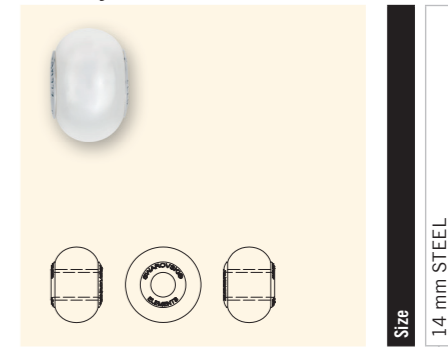
10.5 mm Stainless Steel

**Color**

- Crystal (001)
- White (01)
- Crystal AB (001 AB)
- White (01)
- Crystal Golden Shadow (001 GSHA)
- Pearl Silk (05)
- Jet (280)
- Black (02)
- Amethyst (204)
- Dark Lila (09)
- Aquamarine (202)
- Light Blue (11)
- Black Diamond (215)
- Silver (03)
- Emerald (205)
- Dark Green (13)
- Indian Siam (327)
- Shining Red (07)
- Light Amethyst (212)
- Mauve (14)
- Light Rose (223)
- Rose (06)
- Light Sapphire (211)
- Sky Blue (18)
- Peridot (214)
- Light Green (10)
- Rose (209)
- Rose (06)
- Sapphire (206)
- Dark Blue (15)
- Siam (208)
- Shining Red (07)
- Tanzanite (539)
- Purple (08)
- Topaz (203)
- Shining Curry (12)

April  
February  
March  
May  
July  
June  
December  
August  
October  
September  
January  
November

5890 Crystal BeCharmed Pearl



14 mm STEEL

**Color**

- Crystal Black Pearl (001 298)
- Crystal Bronze Pearl (001 295)
- Crystal Brown Pearl (001 815)
- Crystal Burgundy Pearl (001 301)
- Crystal Cream Pearl (001 620)
- Crystal Creamrose Pearl (001 621)
- Crystal Gold Pearl (001 296)
- Crystal Grey Pearl (001 731)
- Crystal Lavender Pearl (001 524)
- Crystal Light Grey Pearl (001 616)
- Crystal Petrol Pearl (001 600)
- Crystal Platinum Pearl (001 459)
- Crystal Rosaline Pearl (001 294)
- Crystal Rose Gold Pearl (001 769)
- Crystal Rose Peach Pearl (001 674)
- Crystal Tahitian-look Pearl (001 297)
- Crystal Vintage Gold Pearl (001 651)
- Crystal White Pearl (001 650)
- Crystal Coral Pearl (001 816)
- Crystal Dark Lapis Pearl (001 719)
- Crystal Ivory Pearl (001 708)
- Crystal Jade Pearl (001 715)
- Crystal Lapis Pearl (001 717)
- Crystal Mystic Black Pearl (001 335)
- Crystal Pink Coral Pearl (001 716)
- Crystal Red Coral Pearl (001 718)
- Crystal Turquoise Pearl (001 709)
- Crystal Neon Green Pearl (001 771)
- Crystal Neon Orange Pearl (001 733)
- Crystal Neon Pink Pearl (001 732)
- Crystal Neon Red Pearl (001 770)
- Crystal Neon Yellow Pearl (001 734)

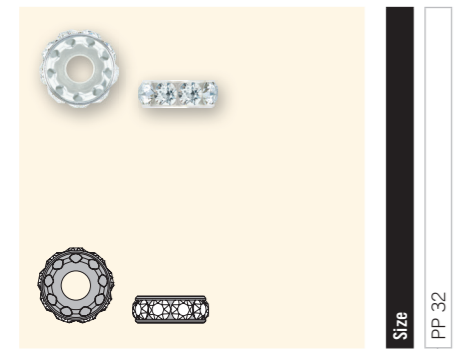
**Gemcolor**

**Neoncolor**

July



77 512 BeCharmed Rondelle



Color	Month
Crystal F (001)	April
Crystal Golden Shadow F (001 GSHA)	April
Crystal Moonlight F (001 MOL)	April
Crystal Silver Shade F (001 SSHA)	April
Jet (280)	April
Air Blue Opal F (285)	February
Amethyst F (204)	February
Aquamarine F (202)	March
Black Diamond F (215)	March
Blue Zircon F (229)	March
Burgundy F (515)	March
Capri Blue F (243)	March
Caribbean Blue Opal F (394)	March
Chrysolite F (238)	March
Chrysolite Opal F (294)	March
Cyclamen Opal F (398)	March
Dark Indigo F (288)	March
Denim Blue F (266)	March
Emerald F (205)	May
Erinite F (360)	May
Fern Green F (291)	May
Fuchsia F (502)	May
Garnet F (241)	May
Greige F (284)	May
Hyacinth F (236)	May
Indian Pink F (289)	May
Indian Sapphire F (217)	May
Indian Siam F (327)	July
Indicolite F (379)	July
Jonquil F (213)	July
Khaki F (550)	July
Light Amethyst F (212)	June
Light Azore F (361)	June
Light Colorado Topaz F (246)	June
Light Grey Opal F (383)	June
Light Peach F (362)	June
Light Rose F (223)	June
Light Sapphire F (211)	December
Light Siam F (227)	December



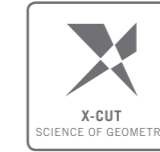
Color	Month
Light Silk F (261)	April
Light Smoked Topaz F (221)	April
Light Topaz F (226)	April
Light Turquoise F (263)	April
Montana F (207)	April
Pacific Opal F (390)	April
Padparadscha F (542)	April
Palace Green Opal F (393)	April
Peridot F (214)	August
Provence Lavender F (283)	August
Purple Velvet F (277)	October
Rose F (209)	October
Rose Peach F (262)	October
Rose Water Opal F (395)	October
Ruby F (501)	October
Sand Opal F (287)	September
Sapphire F (206)	January
Siam F (208)	January
Silk F (391)	January
Smoked Topaz F (220)	January
Smoky Quartz F (225)	January
Sunflower F (292)	January
Tanzanite F (539)	November
Topaz F (203)	November
Turquoise (267)	November
Vintage Rose F (319)	November
Violet F (371)	November
White Opal F (234)	November

UNRIVALED TECHNOLOGY EXCELLENCE



ADVANCED CRYSTAL

The advantage of being first is that you get to set the agenda. ADVANCED CRYSTAL, Swarovski's patented, lead-free\* formula, has changed the DNA of crystal dramatically, yet still offers the same sparkle, dependability, and variety for which Swarovski is famous. If you haven't noticed a difference, that's likely because with the ADVANCED CRYSTAL standard, it's what you don't see that matters: carefully selected raw materials made into products that comply with today's strictest international industry regulations – and it raises the bar by anticipating those of tomorrow. ADVANCED CRYSTAL – Superior. Brilliant. Lead-Free\*



X-CUT

The secret to maximizing crystal's brilliance lies in the interplay of multilayered surfaces and angles, creating a complex stacked effect of interlocking triangles. These are cut using high-precision geometric and optical measurement, made possible by Swarovski's scientifically engineered X-CUT technology. The unmatched science of geometry results in gemstone-like faceting across a select assortment of dazzling product groups.



PLATINUM PRO

With its vast research and technology capability, Swarovski's new advanced Platinum Pro foiling technique has set a new standard in crystal's lifespan. It is not only resistant to environmental damage from chlorine, salt water, and perfume, it can also withstand the likes of soldering and electroplating, making a select group of SWAROVSKI ELEMENTS more durable than any other crystal on the market, and giving a far wider choice of application options.



MADE IN AUSTRIA

Austria has been synonymous with Swarovski crystal ever since Daniel Swarovski founded it in 1895. It was his ingenious invention of a cutting and polishing machine, together with his artistic vision and quality craftsmanship, which enabled Swarovski to produce crystal of an unprecedented level of radiance and perfection. Today, the company's reputation for precision engineering and technical expertise is underpinned by its long tradition of exquisitely refined craftsmanship.

\*Crystal glass and all other materials containing 0.009% lead or less.

# Swarovski Worldwide

## EUROPE

**For Austria, Germany, Switzerland, Benelux, Scandinavia and Eastern Europe, please contact Swarovski AG Triesen:**

### SWAROVSKI INTERNATIONAL DISTRIBUTION AG

Dröschstrasse 15  
Postfach 567  
9495 Triesen  
Liechtenstein  
Tel: +423 399 5757  
Fax: +423 399 5750  
swarovskielements.li@swarovski.com

### SWAROVSKI FRANCE S.A.S.

15, Boulevard Poissonnière  
75002 Paris  
France  
Tel: +33 1 4476 1515  
Fax: +33 1 4476 1421  
cic.france@swarovski.com

### SWAROVSKI HELLAS S.A.

114 Vouliagmenis Ave,  
16674 Glyfada-Athens  
Greece  
Tel: +30 210 993 3020  
Fax: +30 210 990 3129  
heliana.yiakoumaki@swarovski.com

### SWAROVSKI IBÉRICA, S.A.

C/ Llacuna, 10-20 1ª Planta  
08005 Barcelona  
Spain  
Tel: +34 932 857053  
Fax: +34 933 670502  
swarovskielementsinfo.ses@swarovski.com

### SWAROVSKI INT.LE D'ITALIA S.P.A. SOCIETA' A SOCIO UNICO

Via G. Puccini 3  
20121 Milan  
Italy  
Tel: +39 02 722601  
Fax: +39 02 72260 313  
swarovskielements.italy@swarovski.com

### SWAROVSKI U.K. LTD.

2nd Floor  
36 Carnaby Street  
London W1F 7DR  
United Kingdom  
Tel: +44 (0) 207 851 9900  
swarovskielements.li@swarovski.com

### SWAROVSKI 000

Korobeinikov pereulok 1, Office 4  
119034 Moscow  
Russia  
Tel: +7 495 258 8302  
Fax: +7 495 258 8903  
swarovskielements.li@swarovski.com

### SWAROVSKI KRÍSTAL TÍC.LTD.ŠTÍ.

Abdi İpekçi Cad. Reasürans Han E Blok, No:57 Kat:5  
34367 Nişantaşı Şişli, Istanbul  
Turkey  
Tel: +90 (0) 212 225 44 29  
Fax: +90 (0) 212 225 27 99  
swarovski.turkey@swarovski.com

## MIDDLE EAST

### SWAROVSKI MIDDLE EAST FZE

P.O. Box 17128, Jebel Ali Free Zone  
Dubai  
United Arab Emirates  
Tel: +971 4 881 6562  
Fax: +971 4 881 5623  
info.sme@swarovski.com

### SWAROVSKI DUBAI LLC

P.O. Box 117645  
Office No 107, Golf Park Building  
Garhoud, Dubai  
United Arab Emirates  
Tel: +971 4 2822027  
Fax: +971 4 2822866  
office.dubai@swarovski.com

### SWAROVSKI INDIA PVT. LTD.

1st floor, Tower C, DLF Building No.10,  
DLF Cyber City, Phase II  
Gurgaon, India  
Tel: +91 124 6147800  
+91 124 6147900  
Fax: +91 124 6147974  
konia.khanna@swarovski.com

### SWAROVSKI INDIA PVT. LTD.

South India Contact Office:  
Saleh Center  
No. 103, 1st Floor,  
18/9 Cunningham Road  
Bangalore – 560052  
India  
Tel: +91 80 30279870  
Fax: +91 80 30279866  
nirupama.nair@swarovski.com

## NORTH & SOUTH AMERICA

### SWAROVSKI CRYSTAL COMPONENTS LTDA.

Alameda Itu, 852 - 13º Andar  
01421-001 São Paulo – SP  
Brazil  
Tel: +55 11 3088 8821  
Fax: +55 11 3088 5976  
comercial.br@swarovski.com

### SWAROVSKI NORTH AMERICA LTD.

1 Kenney Drive, Cranston  
Rhode Island 02920-4400  
USA  
Tel: +1 401 463 5132  
Fax: +1 401 463 4707  
Toll free: 1 800 463 0849  
elements.sna@swarovski.com

### SWAROVSKI NORTH AMERICA LTD.

Los Angeles Showroom,  
California Mart  
110 East 9th Street, Suite B771  
Los Angeles, CA 90079-2827  
USA  
Tel: +1 213 489 2393  
Fax: +1 213 489 1961

### SWAROVSKI CRYSTAL S.A. DE C.V., MEXICO

Av. Ejército Nacional No. 579  
Piso 11, Local A  
Col. Granada  
Del. Miguel Hidalgo  
C.P. 11520  
México D.F.  
Tel/Fax: +5255 5545 4509

## ASIA

### SWAROVSKI HONG KONG LTD.

9th Floor, Fortis Centre,  
1063 King's Road  
Quarry Bay  
Hong Kong  
Tel: +852 2566 6301  
Fax: +852 2807 1902  
swarovski-elements.hk@swarovski.com

### SWAROVSKI (GUANGZHOU) TRADING COMPANY LTD.

Rm 2401-2403, 24/F, Teemtower,  
Teemall  
208 Tianhe Road  
Guangzhou 510620  
China  
Tel: +86 20 3813 2188  
Fax: +86 20 3810 2278  
Toll Free: +86 400 880 1744  
swarovski-elements.cn@swarovski.com

### SWAROVSKI (GUANGZHOU) TRADING COMPANY LTD.

Beijing Liaison Office  
Room 3610, Jing Guang Centre  
Hu Jia Lou, Chao Yang District  
Beijing 100020  
China  
Tel: +86 10 6597 8777  
Fax: +86 10 6597 8779

### SWAROVSKI (GUANGZHOU) TRADING COMPANY LTD.

Shanghai Liaison Office  
Room 1602,  
The Headquarters Building  
No. 168, Xizang Road (M)  
Shanghai 200001  
China  
Tel: +86 21 2306 9888  
Fax: +86 21 6372 9180

### SWAROVSKI (GUANGZHOU) TRADING COMPANY LTD.

Dongguan Liaison Office  
Room 2202, Kingdom Plaza  
Central Road of East Downtown  
Dongguan City 523129  
China  
Tel: +86 769 2276 4723  
Fax: +86 769 2276 4708

### SWAROVSKI (GUANGZHOU) TRADING COMPANY LTD.

Qingdao Liaison Office  
Art & Technology Space  
Room No 1-506  
No. 63, Haier Road  
Qingdao 266061  
China  
Tel: +86 532 8099 9595  
Fax: +86 532 8099 9596

### SWAROVSKI (GUANGZHOU) TRADING COMPANY LTD.

Yiwu Liaison Office  
Room 8911, Yinlian International  
Business Building  
No. 1399, Chouzhou Road(North),  
Yiwu City  
Zhejiang Province  
China  
Tel: +86 579 8559 0903  
Fax: +86 579 8559 0707

### SWAROVSKI (GUANGZHOU) TRADING COMPANY LTD.

Shenzhen Liaison Office  
Room 13G, Tower C, Lvgem Square  
6009 Shennan Avenue,  
Futian District  
ShenZhen 518048  
China  
Tel: +86 755 23605732  
Fax: +86 755 23605735

# Swarovski Worldwide

### SWAROVSKI TAIWAN LTD.

Taiwan Branch  
3/F, No. 27 Chung Shan North Road  
Section 1, Taipei 104  
Taiwan  
Tel: +886 2 2100 2611  
Fax: +886 2 2100 2622  
swarovski-elements.tw@swarovski.com

### SWAROVSKI SINGAPORE TRADING PTE. LTD.

2, Alexandra Road  
#03-01 Delta House  
Singapore 159919  
Singapore  
Tel: +65 6661 6333  
Fax: +65 6274 8177  
swarovski-elements.sg@swarovski.com

### PT CRYSTALLIZED ELEMENTS

Cyber 2 Tower, 31st Floor Unit B  
JL. HR. Rasuna Said, Blok X5 No. 13  
Jakarta 12950  
Indonesia  
Tel: +62 21 2902 1451 / 52 / 53  
Fax: +62 21 2902 1454  
ptcrystallized.id@swarovski.com

### SWAROVSKI SINGAPORE TRADING PTE. LTD.

(Vietnam Representative Office)  
Level 16 & 17, Gemadept Tower,  
6, Le Thanh Ton Street,  
Ward Ben Nghe, District 1,  
Ho Chi Minh City, Vietnam  
Tel: +84 8 62556768  
Fax: +84 8 62556801  
jeffrey.tan@swarovski.com

### SWAROVSKI (THAILAND) LTD.

849 Vorawat Building, 16th Floor,  
Room 1601 - 1602,  
Silom Road, Silom, Bangrak,  
Bangkok 10500  
Thailand  
Tel: +662 635 1990  
Fax: +662 635 1585  
sirikarn.ngamboonsin@swarovski.com

### SWAROVSKI KOREA LTD.

1F, Dong Ho 38 Bldg  
385-3, Shindang-Dong, Joong-Gu  
Seoul, 100-450  
Korea  
Tel: +82 2 3395 9136  
Fax: +82 2 3442 5255  
lucia.kim@swarovski.com

### SWAROVSKI JAPAN LTD.

Shinagawa Grand Central Tower, 3F  
2-16-4 Konan, Minato-ku  
Tokyo, 108-0075  
Japan  
Tel: +81 3 6718 2382  
Fax: +81 3 6718 2383  
swarovski-elements.jp@swarovski.com

## NEW ZEALAND

### SWAROVSKI INTERNATIONAL (NZ) LTD.

9B Vega Place, Rosedale  
North Shore City 0632  
New Zealand  
Tel: +64 9 970 3760  
Fax: +64 9 912 0959  
vivienne.gee@swarovski.com

## AUSTRALIA

### SWAROVSKI INTERNATIONAL (AUSTRALIA) PTY. LTD.

12 Primrose Avenue  
P.O. Box 185 (N.S.W 1445)  
Rosebery N.S.W. 2018  
Australia  
Tel: +61 2 8345 7200  
Fax: +61 2 9313 6506  
darren.solo@swarovski.com

## SWAROVSKI COMMUNICATION & CREATIVE SERVICE CENTERS WORLDWIDE

## LONDON

### CORPORATE COMMUNICATIONS AND DESIGN SERVICES, SWAROVSKI CRYSTAL BUSINESS

2nd Floor  
21 Sackville Street  
London, W1S 3DN  
United Kingdom  
Tel: +44 (0) 20 7255 8400  
Fax: +44 (0) 20 7255 8473  
www.swarovski.tv  
www.swarovskisparkles.com  
www.atelierswarovski.com  
www.swarovskicrystalpalace.com

## LOS ANGELES

### SWAROVSKI NORTH AMERICA LTD.

Los Angeles Showroom,  
California Mart  
110 E. 9th Street, Suite B771  
Los Angeles, CA 90079-2827  
USA  
Tel: +1 213 489 2393  
Fax: +1 213 489 1961

### SWAROVSKI CORPORATE COMMUNICATIONS UNIT & CREATIVE SERVICES CENTER

8560 W. Sunset Blvd., Suite 200  
West Hollywood, CA 90069  
Los Angeles  
Tel: +1 310 652 0089 x3813  
Fax: +1 310 652 0951

## DUBAI

### SWAROVSKI MIDDLE EAST FZE

P. O. Box 17128, Jebel Ali Free Zone  
Dubai  
United Arab Emirates  
Tel: +971 4 881 6562  
Fax: +971 4 881 5623  
penelope.georgakis@swarovski.com  
bansri.gagwani@swarovski.com

## MILAN

### SWAROVSKI INT.LE D'ITALIA S.P.A. SOCIETA' A SOCIO UNICO

Via G. Puccini 3  
20121 Milan  
Italy  
Tel: +39 02 722601  
Fax: +39 02 72260 313  
stefania.fedeli@swarovski.com

## NEW YORK

### SWAROVSKI CREATIVE SERVICE CENTER

29 West 57th Street, 8th Floor  
New York, NY 10019  
USA  
Tel: +1 212 935 4200  
Fax: +1 212 935 8800  
Toll free: 1 877 888 7980

## PARIS

### SWAROVSKI FRANCE S.A.S.

15, Boulevard Poissonnière  
75002 Paris  
France  
Tel: +33 1 4476 1515  
Fax: +33 1 4476 1421  
cic.france@swarovski.com

## SÃO PAULO

### SWAROVSKI CRYSTAL COMPONENTS LTDA.

Alameda Itu, 852-13º Andar  
01421-001 São Paulo – SP  
Brazil  
Tel: +55 11 3088 8821  
Fax: +55 11 3088 5976  
comercial.br@swarovski.com

## WATTENS

### D. SWAROVSKI KG

6112 Wattens  
Austria  
Tel: +43 5224 500 3307  
Fax: +43 5224 501 3307  
sandra.oconnor@swarovski.com

## SWAROVSKI TREND & APPLICATION CENTERS WORLDWIDE

## HONG KONG

9th Floor, 1063 King's Road  
Quarry Bay, Hong Kong  
Hong Kong  
Tel: +852 2566 6301  
Fax: +852 2807 1902

## BEIJING

Room 3610, Jing Guang Centre  
Hu Jia Lou, Chao Yang District  
Beijing 100020  
China  
Tel: +86 10 6597 8777  
Fax: +86 10 6597 8779

## SHANGHAI

Room 1602  
The Headquarters Building  
No. 168, Xizang Road (M)  
Shanghai 200001  
China  
Tel: +86 21 2306 9888  
Fax: +86 21 6372 9180

## GUANGZHOU

Rm 2401-2403, 24/F, Teemtower,  
Teemall  
208 Tianhe Road  
Guangzhou 510620  
China  
Tel: +86 20 3813 2188  
Fax: +86 20 3810 2278  
Toll Free: +86 400 880 1744

## BANGKOK

### SWAROVSKI (THAILAND) LTD.

849 Vorawat Building, 16th Floor,  
Room 1601 - 1602,  
Silom Road, Silom, Bangrak  
Bangkok 10500  
Thailand  
Tel: +662 635 1990  
Fax: +662 635 1585  
sirikarn.ngamboonsin@swarovski.com

### TOKYO JAPAN TAC

Shinagawa Grand Central Tower, 3F  
2-16-4 Konan, Minato-ku  
Tokyo, 108-0075  
Japan  
Tel: +81 3 6718 2382  
Fax: +81 3 6718 2383  
swarovski-elements.jp@swarovski.com





### **General Warning**

Loose crystals may present a small parts hazard to young children, particularly children under three years old. Depending on the size of the crystal and any attached material (such as glue, fabric, etc.), children may choke on, inhale, swallow, or insert the crystal into their noses. Magnetic products with crystal applications pose a particular risk of serious intestinal injury if ingested. The application techniques as stated in the Application Manual do not guarantee that crystals will not come loose. For each application, the manufacturer must determine whether the product meets the relevant requirements related to small parts hazards and assess any risk it may pose to small children. Failure to follow Swarovski's care instructions may result in damage to the crystal, which could pose a risk of laceration or other harm.

### **Warning for Crystal Tattoos**

Crystal Tattoos may be applied on healthy skin only. Do not adhere to eyes or on mucous membranes. Crystal Tattoos are not recommended for young children. Loose crystals may present a small parts hazard to young children, particularly children under three years old. If a crystal comes loose, depending on the size of the crystal, children may choke on, inhale, swallow, or insert the crystal into their noses.

### **Warning for Tableware**

Application of loose crystals to tableware presents a potential risk of aspiration, choking, swallowing, or tooth damage should crystals become loose. To reduce this risk, crystals should never be applied to any surface of tableware likely to come in contact with food or the mouth, and crystals should never be placed on any tableware intended for use by children. Tableware with crystals intended for decorative use only should be marked as such. To avoid dishwasher damage, tableware decorated with crystals should be washed by hand. The application techniques or suggestions in this manual do not guarantee that crystals will not come loose. For each application, the manufacturer must determine whether the product meets relevant requirements related to small parts hazards or use in food contact items and assess any risk it may pose to users. The use of crystals (which may contain restricted substances deemed hazardous under local laws) and adhesives on tableware is subject to legal restrictions in specific countries. The customer is fully responsible to comply with these country-specific provisions and shall defend, indemnify, and hold Swarovski harmless from any and all third-party claims based on product liability or otherwise relating to uses of Swarovski products and waives all its own claims against Swarovski.

### **Notice for Application on Packaging**

The use of crystal that may contain substances like lead, cadmium or hexavalent chromium, on packaging is subject to legal restrictions in specific countries, including but not limited in regard to the total content of substances based on the proportion between crystal mass to the remaining weight of packaging. The customer is fully responsible to comply with these country-specific provisions and to pass on this information to his customers.

### **Care Instructions**

Failure to follow Swarovski's care instruction may result in damage to the Swarovski product, which could pose a risk of laceration or other harm. Please be informed that all conventional laundering processes (household washing machine as well as professional dry-cleaning) have a considerable mechanical influence onto the garment, which is based on the rotation of the washing drum. The essential requirement for a safety laundering process is that the Swarovski products are proper applied without restrictions regarding the adherence of the Swarovski products. The bigger the size of the used Swarovski product is and the more Swarovski products are applied next to each other, the more a risk of damage has to be taken into consideration. Swarovski products are made of or incorporate crystal and therefore must be handled with due care! Generally, to best protect the Swarovski products from breaking we recommend the use of a soft washing bag and to fill up the washing drum. Turning inside out before washing and selection of a gentle washing program, plus the use of mild detergents are important prerequisites to safeguard the quality of our Swarovski products. Our care instructions based on DIN EN ISO 3758 list up all Swarovski product groups as overview so that each used Swarovski product still needs to be judged in terms of its cleaning suitability for the intended purpose and finished product by the customer. Swarovski's recommendations are given according to the current state of our knowledge and Swarovski's determination of the qualification as textile application product. The customer is therefore fully responsible to determine the cleaning process applicable to the finished product, taking the Swarovski care instructions as well as those of third party materials into account. The variety of shape, cut, surface effect, size and application weight respectively amount of used Swarovski products are decisive for the determination of the suitable cleaning process. To be entirely safe customers respectively dry-cleaners usually take off Sew-on Stones, Buttons, etc. of bigger size before cleaning and re-apply them afterwards.

### **Unsuitable Applications**

SWAROVSKI ELEMENTS are intended for use in the fields of fashion, jewelry, accessories, textile products, and for interior décor. Due to their physical properties, SWAROVSKI ELEMENTS are unsuitable for other uses (e.g. gluing onto teeth, using crystals on or near mucous membranes, and other unsafe uses). The customer shall defend, indemnify and hold Swarovski harmless from any and all third-party claims based on product liability or otherwise relating to uses of Swarovski products purchased by the customer, and waives all its own claims.

### **Responsibility of User**

Any oral, written, or test-based advice that Swarovski provides regarding techniques for application of its products are recommendations based on Swarovski's current knowledge and the information provided by its suppliers. Such advice does not discharge the customer from carrying out its own tests of techniques it proposes to use and their suitability for the intended application. The application, use, and processing of these techniques and products are solely the user's responsibility.

VALID FROM MAY 2013

Content is subject to change without notice.

Errors and misprints excepted.

D. Swarovski Distribution GmbH, Swarovskistrasse 30, 6112 Wattens, Austria

© 2013 D. Swarovski Distribution GmbH. All rights reserved.

Partial or total publication, transmission, copy or other duplication of texts, graphics, pictures etc. which are to be found in this publication

is forbidden without special consent by D. Swarovski Distribution GmbH.

SWAROVSKI® is a registered trademark by Swarovski AG.

Please visit our website for contact information: [WWW.SWAROVSKI-ELEMENTS.COM](http://WWW.SWAROVSKI-ELEMENTS.COM)