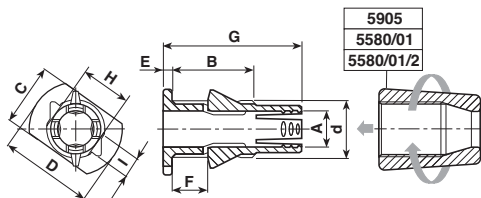




Bloccacavi anticaduta

Self retaining cable clamps



Materiale / Material

- 6 Nylon 66 RV
- 11 Policarbonato

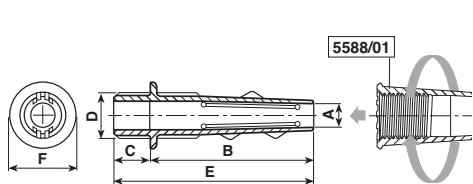
Codice / Code	Dimensioni / Dimensions (mm)										Colore / Colour		
	A	B	C	D	d	E	F	G	H	I	0 Neutro Natural	1 Bianco White	2 Nero Black
5580/05	6,5	15	11	16,5	M10x1	1,5	6,5	24,5	8,5	3,5	Materiale Material → 11	6	6

Il bloccacavo è omologato per l'uso congiunto con le ghiera 5905 - 5580/01 - 5580/01/2 da ordinare separatamente
 Per cavi: H03VV-F Ø min 4,8 - Ø max 6 e H03VVH2-F sez. min 3x4,8 - sez. max 3,9x6,4 - Con adattatore 5576
 M 10x1: Coppia di serraggio max = 130 N cm - Carico max: con cavo 2x0,75 = 7 Kg; con cavo 3x0,75 = 10 Kg

Cable clamp is approved for combined use with ring nuts 5905 - 5580/01 - 5580/01/2 to order separately
 For cables: H03VV-F Ø min 4,8 - Ø max 6 and H03VVH2-F sect. min 3x4,8 - sect. max 3,9x6,4 - With adapter 5576
 M 10x1: Max tightening torque = 130 N cm - Max load: with cable 2x0,75 = 7 Kgs; with cable 3x0,75 = 10 Kgs

Bloccacavi

Cable clamps



Materiale / Material

- 6 Nylon 66 RV
- 11 Policarbonato

Codice / Code	Dimensioni / Dimensions (mm)						Colore / Colour		
	A	B	C	D	E	F	0 Neutro Natural	2 Nero Black	
5588/08	4	31,5	5,1	M8x1	36,6	10,4	Materiale Material → 11	6	

Il bloccacavo è omologato per l'uso congiunto con la ghiera 5588/01 da ordinare separatamente
 Per cavi: H03VV-F Ø min 3,5 - Ø max 3,9 e H03VVH2-F sez. min 3x4,8 - sez. max 3,9x6,4
 M 10x1: Coppia di serraggio max = 130 N cm - Carico max: con cavo 2x0,75 = 7 Kg; con cavo 3x0,75 = 10 Kg

Cable clamp is approved for combined use with ring nut 5588/01 to order separately
 For cables: H03VV-F Ø min 3,5 - Ø max 3,9 and H03VVH2-F sect. min 3x4,8 - sect. max 3,9x6,4
 M 10x1: Max tightening torque = 130 N cm - Max load: with cable 2x0,75 = 7 Kgs; with cable 3x0,75 = 10 Kgs

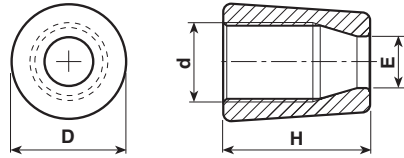
Esempi di utilizzazione

Application examples

Dima di foratura
 Template

Ghiere bloccacavo

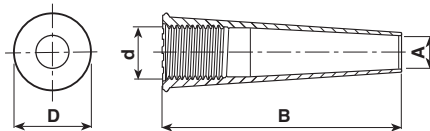
Ring nuts for cable clamps



Materiale / Material

- 5** Nylon 66
- 6** Nylon 66 RV
- 11** Policarbonato

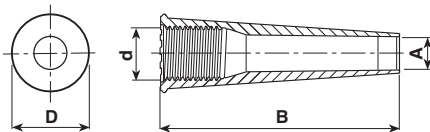
Codice/Code	Dimensioni / Dimensions (mm)				Colore / Colour						
	D	d	E	H	0 Neutro Natural	1 Bianco White	2 Nero Black	4 Oro Gold	8 Grigio Grey	10 Argento Silver	
5905 - 5905A	14,8	M 10x1	7,1	18,5	Materiale Material →	11	6	6	5	6	5
5605	17,9	M 13x1	10,1	18,5		11	6	6	5		



Materiale / Material

- 6** Nylon 66 RV
- 11** Policarbonato

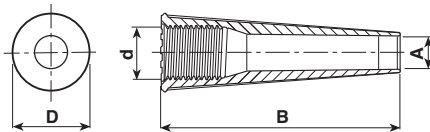
Codice / Code	Dimensioni / Dimensions (mm)				Colore / Colour		
	A	B	D	d	0 Neutro Natural	2 Nero Black	
5588/01	4,2	36	10,4	M8x1	Materiale Material →	11	6



Materiale / Material

- 6** Nylon 66 RV
- 11** Policarbonato

Codice / Code	Dimensioni / Dimensions (mm)				Colore / Colour		
	A	B	D	d	0 Neutro Natural	2 Nero Black	
5580/01	6,5	46	14,8	M10x1	Materiale Material →	11	6



Materiale / Material

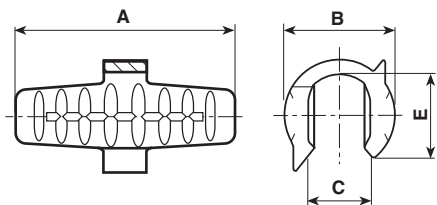
- 11** Policarbonato

Codice / Code	Dimensioni / Dimensions (mm)				Colore / Colour	
	A	B	D	d	0 Neutro Natural	
5580/01/2	6,5	46	14,8	M10x1	Materiale Material →	11



Adattatore

Adapter



Materiale / Material
11 Policarbonato

Codice / Code	Dimensioni / Dimensions (mm)				Colore / Colour
	A	B	C	E	
5576	13,5	6,8	3,3	5,5	0 Neutro Natural Materiale / Material → 11

Esempi di utilizzazione

Application examples

5905 - 5905A

5580/01 5580/01/2

5576

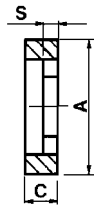
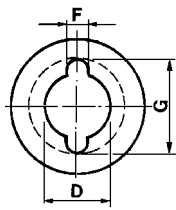
5580/05 5915 5915/2

5916 5916/26 5919 5917 5917/30

Cavo piatto: 2x0,75
H03VVH2-F

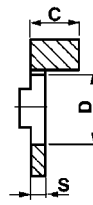
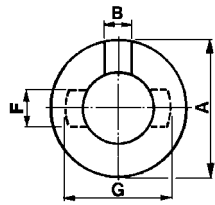
Flat cable: 2x0,75
H03VVH2-F

Rondelle antirotazione Antirotation washers



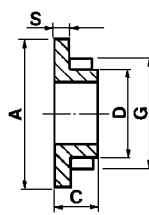
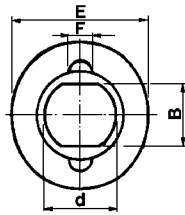
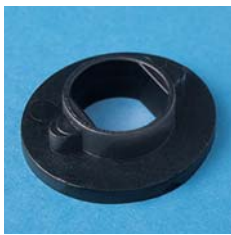
Materiale / Material
6 Nylon 66 RV

Codice / Code	Dimensioni / Dimensions (mm)						Colore / Colour	
	A	C	D	F	G	S	1 Bianco White	2 Nero Black
5322/2	22	2	10,2	3	15,4	2	Materiale Material → 6	6
5322/10	22	10	10,2	3	15,4	2	6	6



Materiale / Material
6 Nylon 66 RV

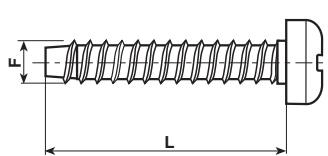
Codice / Code	Dimensioni / Dimensions (mm)							Colore / Colour	
	A	B	C	D	F	G	S	1 Bianco White	2 Nero Black
5471	20	4	7,3	10,2	5,3	15,5	1,8	Materiale Material → 6	6



Materiale / Material
6 Nylon 66 RV

Codice / Code	Dimensioni / Dimensions (mm)									Colore / Colour	
	A	B	C	D	d	E	F	G	S	1 Bianco White	2 Nero Black
5485	22	8,5	6	12	10,3	20	3,2	17	2	Materiale Material → 6	6

Viti autofilettanti Self - threading screws



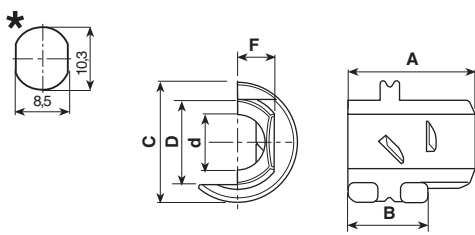
Codice / Code	Dimensioni / Dimensions (mm)			Materiale Material →	Colore / Colour
	D	F	L		
005337/29/65	5,6	2,9	6,5	Acc. zincato / Plated steel	
005459/31180	5	2,9	11	Acc. zincato / Plated steel	
005446/3/158	7	3,5	15	Acc. zincato / Plated steel	
005350/29/16	5,6	2,9	16	Acc. zincato / Plated steel	
005504/3/980	5,6	2,9	9	Acc. zincato / Plated steel	
005448/31380	5,6	2,9	13	Acc. zincato / Plated steel	
005527/292582	5,6	2,9	25	Acc. zincato / Plated steel	
005625/41682	8,2	4,2	16	Acc. inox / Stainless steel	
005637/2965	5,6	2,9	6,5	Acc. zincato (tipo B UNI 6947) / Plated steel (type B UNI 6947)	

Coppia di serraggio = Ø 2,9±3 0,5 N cm - Ø 3,5 0,8 N cm - Tightening torque = DIA. 2,9±3 0,5 N cm - Ø 3,5 0,8 N cm



Bloccacavi assiale in 2 pezzi - Per cavo doppio isolamento

Two pieces cable clamp for double - insulated wires



Materiale / Material

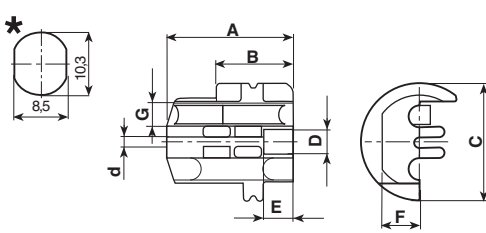
- 6 Nylon 66 RV
- 25 Polifenilensolfuro RV40

Codice / Code	Dimensioni / Dimensions (mm)						Colore / Colour		Note / Notes
	A	B	C	D	d	F	1 Bianco / White	2 Nero / Black	
5616/3/6	14	8,5	13	10	3x6	4,1	6	6 25	●
5616	14	8,5	13	10	6	4,1	6	6 25	●●

- * Dima di foratura. Con spessore alloggiamento min 0,8 - max 2,3 - Template. Slot's thickness min 0,8 - max 2,3
- Per cavi: H03VVH2-F sez. min 3x4,8 - sez. max 3,9x6,4 - For cables: H03VVH2-F sect. min 3x4,8 - sect. max 3,9x6,4
- Per cavi: H03VV-F Ø min 4,8 - Ø max 6,5 - For cables: H03VV-F Ø min 4,8 - Ø max 6,5

Bloccacavi assiale in 2 pezzi - Per cavo unipolare

Two pieces cable clamp for single pole wires



Materiale / Material

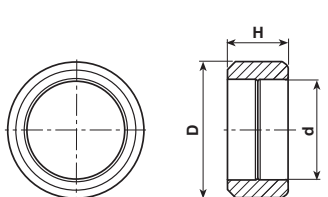
- 25 Polifenilensolfuro RV40

Codice / Code	Dimensioni / Dimensions (mm)								Colore / Colour	
	A	B	C	D	d	E	F	G	2 Nero / Black	Materiale / Material
5595/2	14	8,5	13	2,9	1	3,2	4,1	2,4	25	

- * Dima di foratura. Per cavi FEP PTF Teflon Ø min 2,0 - Ø max 2,4 - Template. For cable's FEP FTP Teflon dia min 2,0 - dia max 2,4

Anello

Safety ring



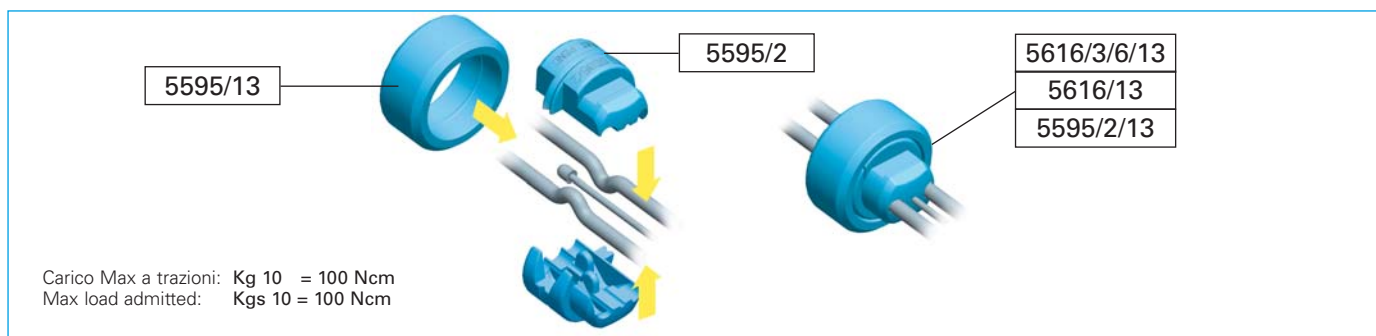
Materiale / Material

- 6 Nylon 66 RV
- 25 Polifenilensolfuro RV40

Codice / Code	Dimensioni / Dimensions (mm)			Colore / Colour	
	D	d	H	2 Nero / Black	Materiale / Material
5595/13	18	13,2	8	6 25	

Esempio di utilizzazione

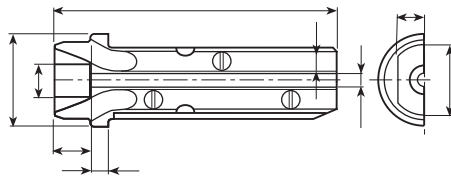
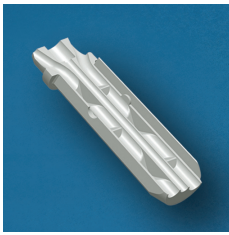
Application example



Carico Max a trazioni: Kg 10 = 100 Ncm
Max load admitted: Kgs 10 = 100 Ncm

Micro bloccacavo assiale

Micro cable clamp



Materiale / Material

25 Polifenilensolfuro RV40

Codice / Code	Dimensioni / Dimensions (mm)									Colore / Colour	
	A	B	C	D	D1	d	d1	F	G	<input type="checkbox"/> Neutro Natural	<input checked="" type="checkbox"/> 25
5595/1	24,7	1,5	8,2	2,9	7	1,2	1,8	2,5	3,2	Materiale Material →	25

Predisposto per anti-rotazione e per alloggiamento cavo d'acciaio (Ø 1)

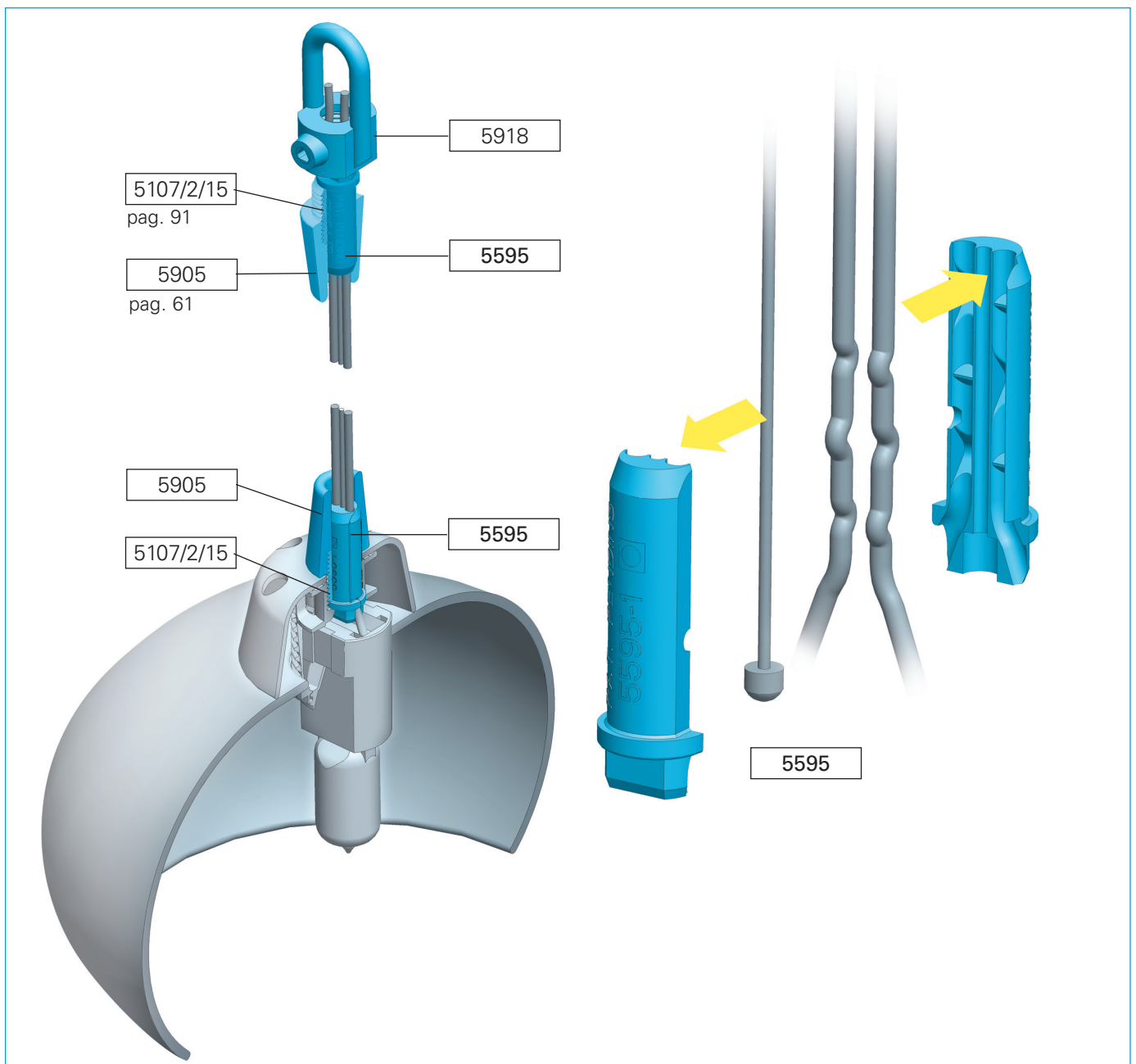
Per cavi FEP PTF Teflon Ø 1,6 ÷ 1,8 - Il bloccaggio dei conduttori avviene con inserimento in un tubetto con foro Ø 7,0 ÷ 7,2

For anti-rotation and steel strain relief housing

For cables FEP PTF Teflon Ø 1,6 ÷ 1,8 - Wires's blocking works inserting the micro cable clamp into tube Ø 7,0 ÷ 7,2

Esempio di utilizzazione

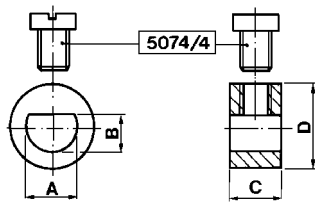
Application example





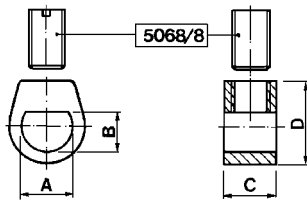
Bloccacavi

Cable clamps



Materiale / Material
6 Nylon 66 RV

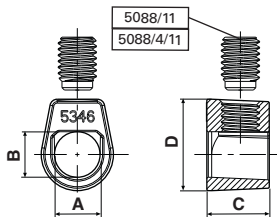
Codice / Code	Dimensioni / Dimensions (mm)				Colore / Colour		
	A	B	C	D	1 Bianco White	2 Nero Black	4 Oro Gold
5176	6,5	4,2	5,5	10,5	Materiale Material → 6	6	6



Materiale / Material
6 Nylon 66 RV
18 Polibutili RV-AE

Codice / Code	Dimensioni / Dimensions (mm)				Colore / Colour		
	A	B	C	D	1 Bianco White	2 Nero Black	4 Oro Gold
5227	9	7,5	8,3	14	Materiale Material → 6 18	6 18	6

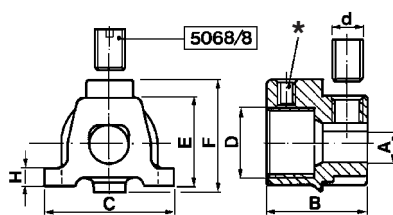
I bloccacavi vengono forniti con grano separato.
 Cable clamps are supplied with separate threaded grub.



Materiale / Material
6 Nylon 66 RV

Codice / Code	Dimensioni / Dimensions (mm)				Colore / Colour		
	A	B	C	D	1 Bianco White	2 Nero Black	4 Oro Gold
5346	9,5	9,5	13	19	Materiale Material → 6		

I bloccacavi vengono forniti con grano separato.
 Cable clamps are supplied with separate threaded grub.



Materiale / Material
6 Nylon 66 RV

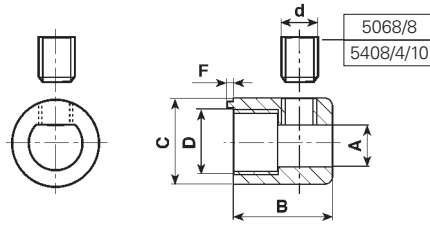
Codice / Code	Dimensioni / Dimensions (mm)								Colore / Colour		
	A	B	C	D	d	E	F	H	2 Nero Black	4 Oro Gold	6
5337/1/10	7	18	24	M 10x1	M 6x1	16	20	3	Materiale Material → 6		
5337/1/13	7	18	24	M 13x1	M 6x1	16	20	3	6		

* Foro predisposto per vite autofilettante: Ø 2,9x6,5 mm
 M 10x1: Coppia di serraggio max = 130 N cm - M 13x1: Coppia di serraggio max = 150 N cm
 I bloccacavi vengono forniti con grano filettato separato.

* Hole suitable for self-threading screw: Ø 2,9x6,5 mm
 M 10x1: Max tightening torque = 130 N cm - M 13x1: Max tightening torque = 150 N cm
 Cable clamps are supplied with separate threaded grub.

Bloccacavi

Cable clamps



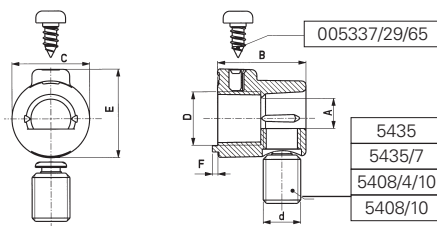
Materiale / Material Approvati per l'utilizzo in Classe I
Approved for Classe I fittings

6 Nylon 66 RV
11 Policarbonato
22 Nylon 66 AE

Codice / Code	Dimensioni / Dimensions (mm)						Colore / Colour				Note / Notes	Omologato / Certified
	A	B	C	D	d	F	0 Neutro / Natural	1 Bianco / White	2 Nero / Black	4 Oro / Gold		
5465	6x4	15,3	12	M8x1	M6x1	0	Materiale / Material →	6	6	6	●	
5069/0	6	16,5	14,5	M10x1	M7x1	0	11	6	6	6	●●	
5069	6	16,5	14,5	M10x1	M7x1	1	11	6 22	6	6	●●	

M 8x1: Coppia di serraggio max = 90 N cm - M 10x1: Coppia di serraggio max = 130 N cm - I bloccacavi vengono forniti con grano filettato separato.
● Con grano 5068/8 ●● Con grano 5408/4/10

M 8x1: Max tightening torque = 90 N cm - M 10x1: Max tightening torque = 130 N cm - Cable clamps are supplied with separate threaded grub.
● With threaded grub 5068/8 ●● With threaded grub 5408/4/10

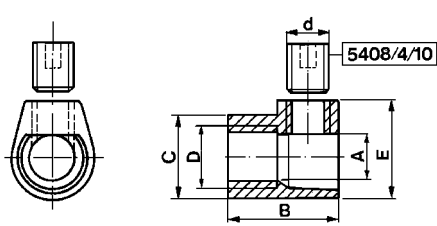


Materiale / Material Approvati per l'utilizzo in Classe I
Approved for Classe I fittings

6 Nylon 66 RV
11 Policarbonato
22 Nylon 66 AE

Codice / Code	Dimensioni / Dimensions (mm)						Colore / Colour				Omologato / Certified	
	A	B	C	D	d	E	F	0 Neutro / Natural	1 Bianco / White	2 Nero / Black		
5069/2	6	16,5	14,5	M10x1	M7x1	16,6	1	Materiale / Material →	11	6	6	
5069/0/2	6	16,5	14,5	M10x1	M7x1	16,6	0	11	6 22	6 22		

M 10x1: Coppia di serraggio max=130 N cm - I bloccacavi vengono forniti con grano filettato separato.
M 10x1: Max tightening torque= 130 N cm - Cable clamps are supplied with separate threaded grub.



Materiale / Material Approvati per l'utilizzo in Classe I
Approved for Classe I fittings

6 Nylon 66 Rv
11 Policarbonato

Codice / Code	Dimensioni / Dimensions (mm)						Colore / Colour				Omologato / Certified	
	A	B	C	D	d	E	0 Neutro / Natural	1 Bianco / White	2 Nero / Black	4 Oro / Gold		
5069/7	7	18	13,5	M 10x1	M 7x1	16	Materiale / Material →	11	6	6	6	C.S. N°EH 228

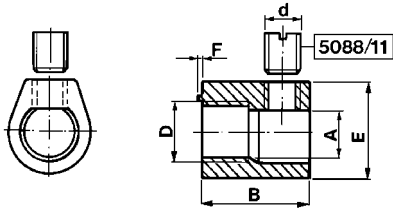
M 10x1: Coppia di serraggio max=130 N cm - I bloccacavi vengono forniti con grano filettato separato.
Per cavi: H03VV-F Ø min 4,8 - Ø max 6,5 e H03VVH2-F sez. min 3x4,8 - sez. max 3,9x6,4

M 10x1: Max tightening torque=130 N cm - Cable clamps are supplied with separate threaded grub.
For cables: H03VV-F Ø min 4,8 - Ø max 6,5 and H03VVH2-F sect. min 3x4,8 - sect. max 3,9x6,4



Bloccacavi

Cable clamps



Materiale / Material

- 6 Nylon 66 Rv
- 18 Polibutil RV-AE

Approvati per l'utilizzo in Classe I
Approved for Classe I fittings

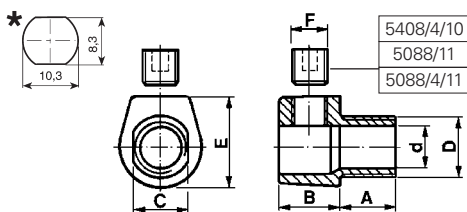
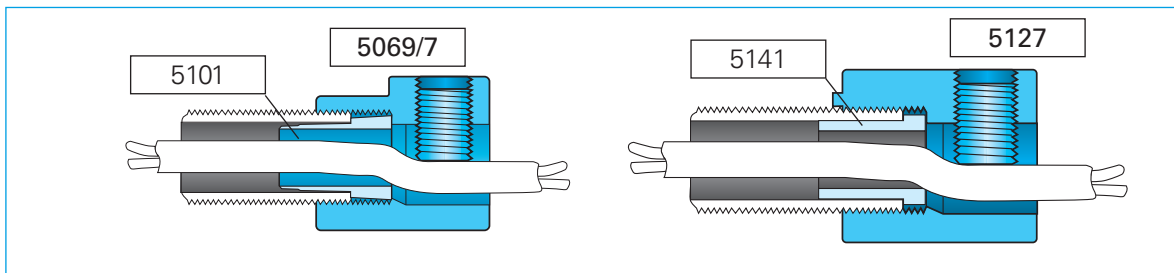
Codice / Code	Dimensioni / Dimensions (mm)						Colore / Colour				Omologato Certified
	A	B	C	D	d	E	1 Bianco White	2 Nero Black	6	18	
5127	10	23	M 13,5x1	M 8x1,25	20	1	Materiale Material → 6 18				C.S. N°EH 228

M 13x1: Coppia di serraggio max=150 N cm - I bloccacavi vengono forniti con grano filettato separato.
Per cavi: H03VV-F / H05VV-F Ø min 8 - Ø max 9,5

M 13x1: Max tightening torque=150 N cm - Cable clamps are supplied with separate threaded grub.
For cables: H03VV-F / H05VV-F Ø min 8 - Ø max 9,5

Esempi di utilizzazione

Application examples



Materiale / Material

- 5 Nylon 66
- 6 Nylon 66 RV
- 11 Policarbonato
- 21 Nylon 66 RV-AE
- 24 Liquid Cristal Polymers
- 25 Polifenilensolfuro RV40

Approvati per l'utilizzo in Classe II
Approved for Classe II fittings

Codice / Code	Dimensioni / Dimensions (mm)							Colore / Colour				Omologato Certified
	A	B	C	D	d	E	F	0 Neutro Natural	1 Bianco White	2 Nero Black	4 Oro Gold	
5100/7/109	9	10	8,0	M 10x1	7,2	15	M 7x1	Materiale Material → 5 11 24 25 6 21 6 25 6				C.S. N°EH 229
5100/7/114	14	10	8,0	M 10x1	7,2	15	M 7x1	11 6 6 6				C.S. N°EH 229
5346/07	7	12	11,5	M 13x1	9,5	18	M 8x1,25	11 6 6				C.S. N°EH 229
5346/11	11	12	11,5	M 13x1	9,5	18	M 8x1,25	11 6 6 6				C.S. N°EH 229
5346/20	20	12	11,5	M 13x1	9,5	18	M 8x1,25	11 6 6				C.S. N°EH 229

* Dima di foratura - I bloccacavi vengono forniti con grano filettato separato.

M 10x1: Coppia di serraggio max = 130 N cm - M 13x1: Coppia di serraggio max = 150 N cm

Articoli 5100/7/109-5100/7/114: per cavi H03VV-F/H05VV-F Ø min 4,8 - Ø max 6,5 e H03VVH2-F sez. min 3x4,8 - sez. max 3,6x6
Articoli 5346/07-5346/11-5346/20: per cavi H03VV-F/H05VV-F Ø min 4,8 - Ø max 9 e H03VVH2-F sez. min 3x4,8 - sez. max 5x7,2

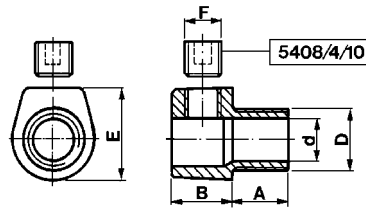
* Template - Cable clamps are supplied with separate threaded grub.

M 10x1: Max tightening torque = 130 N cm - M 13x1: Max tightening torque = 150 N cm

Articles 5100/7/109-5100/7/114: for cables H03VV-F/H05VV-F Ø min 4,8 - Ø max 6,5 and H03VVH2-F sect. min 3x4,8 - sect. max 3,6x6
Articles 5346/07-5346/11-5346/20: for cables H03VV-F/H05VV-F Ø min 4,8 - Ø max 9 and H03VVH2-F sect. min 3x4,8 - sect. max 5x7,2

Bloccacavi

Cable clamps



Materiale / Material

- 5 Nylon 66
- 6 Nylon 66 RV
- 11 Policarbonato

Approvati per l'utilizzo in Classe II
 Approved for Classe II fittings

Codice / Code	Dimensioni / Dimensions (mm)						Colore / Colour					Omologato Certified
	A	B	D	d	E	F	0 Neutro Natural	1 Bianco White	2 Nero Black	4 Oro Gold	10 Argento Silver	
5100/7/05	5	10	M 10x1	7,2	16	M 7x1	Materiale Material → 11	6	6	6		<input type="checkbox"/> C.S. N°EH 229 Ⓢ
5100/7/08	8	10	M 10x1	7,2	16	M 7x1	11	6	6	6		<input type="checkbox"/> C.S. N°EH 229 Ⓢ
5100/7/11	11	10	M 10x1	7,2	16	M 7x1	11	6	6	6	5	<input type="checkbox"/> C.S. N°EH 229 Ⓢ

I bloccacavi vengono forniti con grano filettato separato.

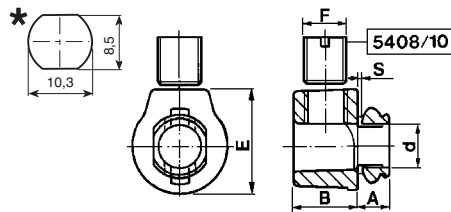
M 10x1: Coppia di serraggio max = 130 N cm

Per cavi: H03VV-F/H05VV-F Ø min 4,8 - Ø max 6,5 e H03VVH2-F sez. min 3x4,8 - sez. max 3,6x6

Cable clamps are supplied with separate threaded grub.

M 10x1: Max tightening torque = 130 N cm

For cables: H03VV-F/H05VV-F Ø min 4,8 - Ø max 6,5 and H03VVH2-F sect. min 3x4,8 - sect. max 3,6x6



Materiale / Material

- 6 Nylon 66 Rv
- 11 Policarbonato

Approvati per l'utilizzo in Classe II
 Approved for Classe II fittings

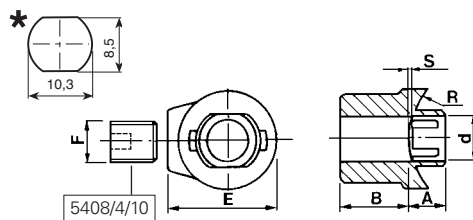
Codice / Code	Dimensioni / Dimensions (mm)						Colore / Colour				Omologato Certified
	A	B	d	E	F	S	0 Neutro Natural	1 Bianco White	2 Nero Black	4 Oro Gold	
5100/6/5	6	10	6,7	16,2	M 7x1	0,8±1	Materiale Material → 11	6	6	6	<input type="checkbox"/> C.S. N°EH 229 Ⓢ

* Dima di foratura - I bloccacavi vengono forniti con grano filettato separato.

Per cavi: H03VV-F Ø min 4,8 - Ø max 6,5 e H03VVH2-F sez. min 3x4,8 - sez. max 3,9x6,4

* Template - Cable clamps are supplied with separate threaded grub.

For cables: H03VV-F Ø min 4,8 - Ø max 6,5 and H03VVH2-F sect. min 3x4,8 - sect. max 3,9x6,4



Materiale / Material

- 6 Nylon 66 RV

Approvati per l'utilizzo in Classe II
 Approved for Classe II fittings

Codice / Code	Dimensioni / Dimensions (mm)								Colore / Colour			Omologato Certified
	A	B	d	E	F	R	S	1 Bianco White	2 Nero Black	4 Oro Gold		
5100/6518	5	10	6,7	16,2	M 7x1	9	0,8±1	Materiale Material → 6	6	6	<input type="checkbox"/> C.S. N°EH 229 Ⓢ	

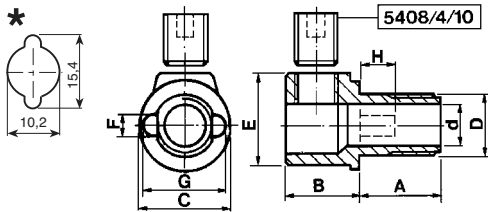
* Dima di foratura - Per cavi: H03VV-F Ø min 4,8 - Ø max 6,5 e H03VVH2-F sez. min 3x4,8 - sez. max 3,9x6,4

* Template - For cables: H03VV-F Ø min 4,8 - Ø max 6,5 and H03VVH2-F sect. min 3x4,8 - sect. max 3,9x6,4



Bloccacavi

Cable clamps



Materiale / Material

- 6 Nylon 66 RV
- 11 Policarbonato

Approvati per l'utilizzo in Classe II
 Approved for Classe II fittings

Codice / Code	Dimensioni / Dimensions (mm)									Colore / Colour			Omologato Certified
	A	B	C	D	d	E	F	G	H	0 Neutro Natural	1 Bianco White	2 Nero Black	
5100/6/10	10	10	14,5	M10x1	6,8	15	3	13,8	6	Materiale Material →	6	6	<input type="checkbox"/> C.S. N°EH 229 Ⓢ
5100/6/15	15	10	14,5	M10x1	6,8	15	3	13,8	6	11	6	6	<input type="checkbox"/> C.S. N°EH 229 Ⓢ
5100/6/20	20	10	14,5	M10x1	6,8	15	3	13,8	6			6	<input type="checkbox"/> C.S. N°EH 229 Ⓢ
5100/6/25	25	10	14,5	M10x1	6,8	15	3	13,8	6			6	<input type="checkbox"/> C.S. N°EH 229 Ⓢ
5100/6/30	30	10	14,5	M10x1	6,8	15	3	13,8	6		6		<input type="checkbox"/> C.S. N°EH 229 Ⓢ
5100/6/35	35	10	14,5	M10x1	6,8	15	3	13,8	6		6	6	<input type="checkbox"/> C.S. N°EH 229 Ⓢ

* Dima di foratura - I bloccacavi vengono forniti con grano filettato separato.

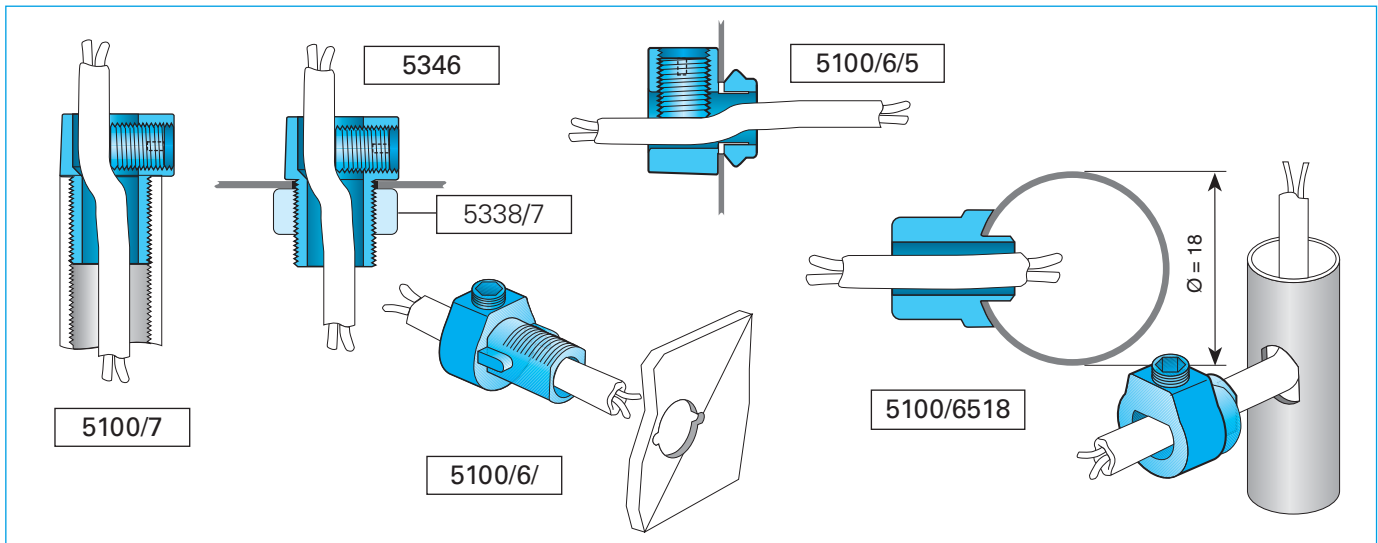
M 10x1: Coppia di serraggio max = 130 N cm - Per cavi: H03VV-F Ø min 4,8 - Ø max 6,5 e H03VVH2-F sez. min 3x4,8 - sez. max 3,9x6,4

* Template - Cable clamps are supplied with separate threaded grub.

M 10x1: Max tightening torque = 130 N cm - For cables: H03VV-F Ø min 4,8 - Ø max 6,5 and H03VVH2-F sect. min 3x4,8 - sect. max 3,9x6,4

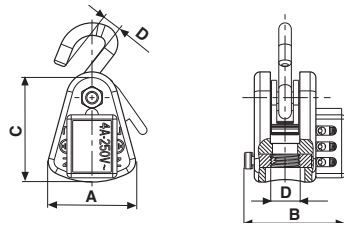
Esempi di utilizzazione

Application examples



Bloccacavo con gancio e morsettiera

Cord anchorage with connection box and hook



Materiale / Material

6 Nylon 66 RV

Codice / Code	Dimensioni / Dimensions (mm)					Colore / Colour	Omologato / Certified
	A	B	C	d	D		
7300/10	32	35	56	6,5	M 10x1	1 Bianco / White 6 Materiale / Material →	
7300/13	32	35	56	6,5	M 13x1	6	

Art. 7300/10 Gruppo gancio bloccacavo per tige M10 - Per cavi H03VV-F Ø min 5,2 - Ø max 6,7

Art. 7300/13 Gruppo gancio bloccacavo per tige M13 - Per cavi H05VV-F Ø min 5,2 - Ø max 7,6

Art. 7300/10 Cord anchorage with connection box and hook for metal tube M10 - For cable H03VV-F Ø min 5,2 - Ø max 6,7

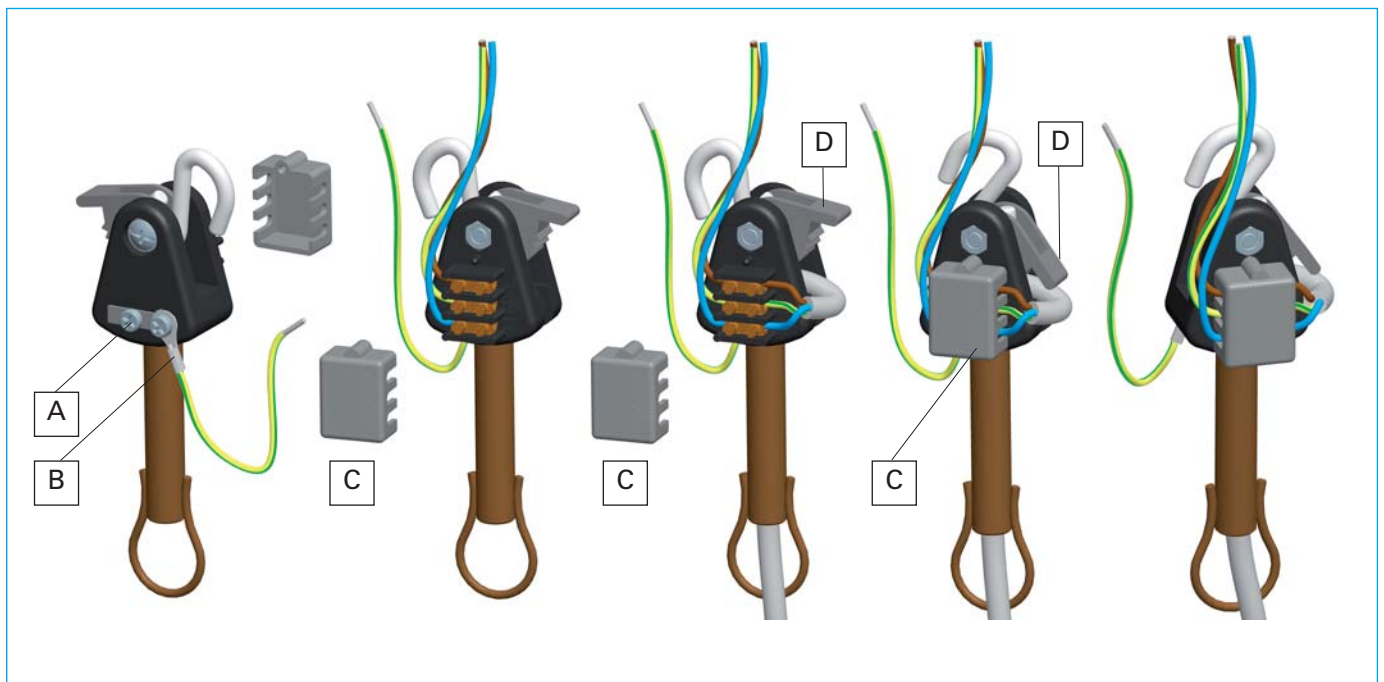
Art. 7300/13 Cord anchorage with connection box and hook for metal tube M13 - For cable H05VV-F Ø min 5,2 - Ø max 7,6

Carico max supportato: 30 Kg

Max load: 30 Kgs

Esempi di utilizzazione

Application examples



Istruzioni per il Montaggio

- 1) Avvitare la tige specifica (M10 o M13) e bloccarla con la vite **A**
- 2) Se fornito (su richiesta), montare l'occhiello **B** per la messa a terra e bloccarlo con l'altra vite **A**
- 3) Asportare manualmente il coperchio **C** ed eseguire i collegamenti ai morsetti facendo attenzione alle indicazioni elettriche
- 4) Bloccare il cavo del pendente agendo sulla leva **D** e ricoprire i morsetti con il coperchio **C**

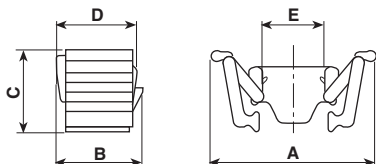
Assembly's Instructions

- 1) Tighten the metal tube (M10 or M13) and block by the screw **A**
- 2) If earthing is necessary, assemble the earth tag **B** and block by other screw **A**
- 3) Pull out the cover **C** and connect the wires taking care by electric indications
- 4) Block the luminaire's cable pushing the cord-grip's lever **D** and protect the terminals by cover **C**



Bloccacavo per cavo in tessuto

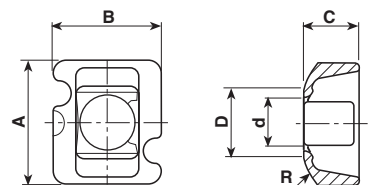
Cord anchorage for cables with cotton covering



Materiale / Material

5 Nylon 66

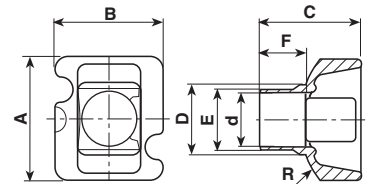
Codice / Code	Dimensioni / Dimensions (mm)					Colore / Colour
	A	B	C	D	d	3 Rosso Red
5598/1	17,5	9,2	8,7	8,5	6,6	Materiale / Material → 5



Materiale / Material

6 Nylon 66 RV

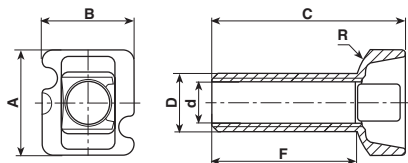
Codice / Code	Dimensioni / Dimensions (mm)						Colore / Colour
	A	B	C	D	d	R	1 Bianco White
5598/0	18	15,9	8,2	9,9	8,2	15	Materiale / Material → 6



Materiale / Material

6 Nylon 66 RV

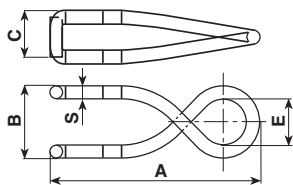
Codice / Code	Dimensioni / Dimensions (mm)								Colore / Colour
	A	B	C	D	d	R	E	F	1 Bianco White
5598/2	18	15,9	15	10	7,5	15	8,7	6,8	Materiale / Material → 6



Materiale / Material

6 Nylon 66 RV

Codice / Code	Dimensioni / Dimensions (mm)							Colore / Colour
	A	B	C	D	d	R	E	1 Bianco White
5598/2/25	18	15,9	33	M10x1	7,5	15	24,8	Materiale / Material → 6

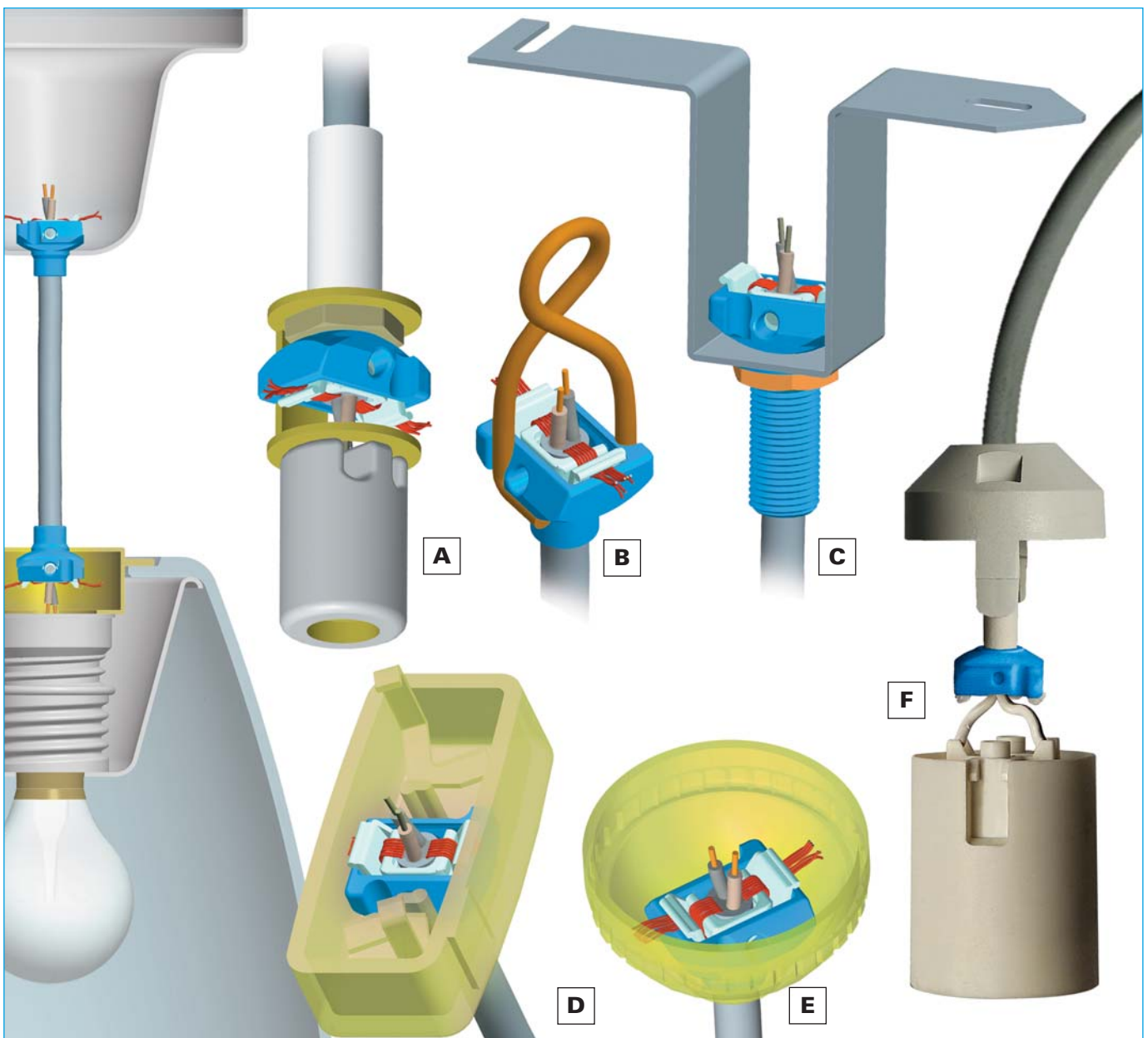
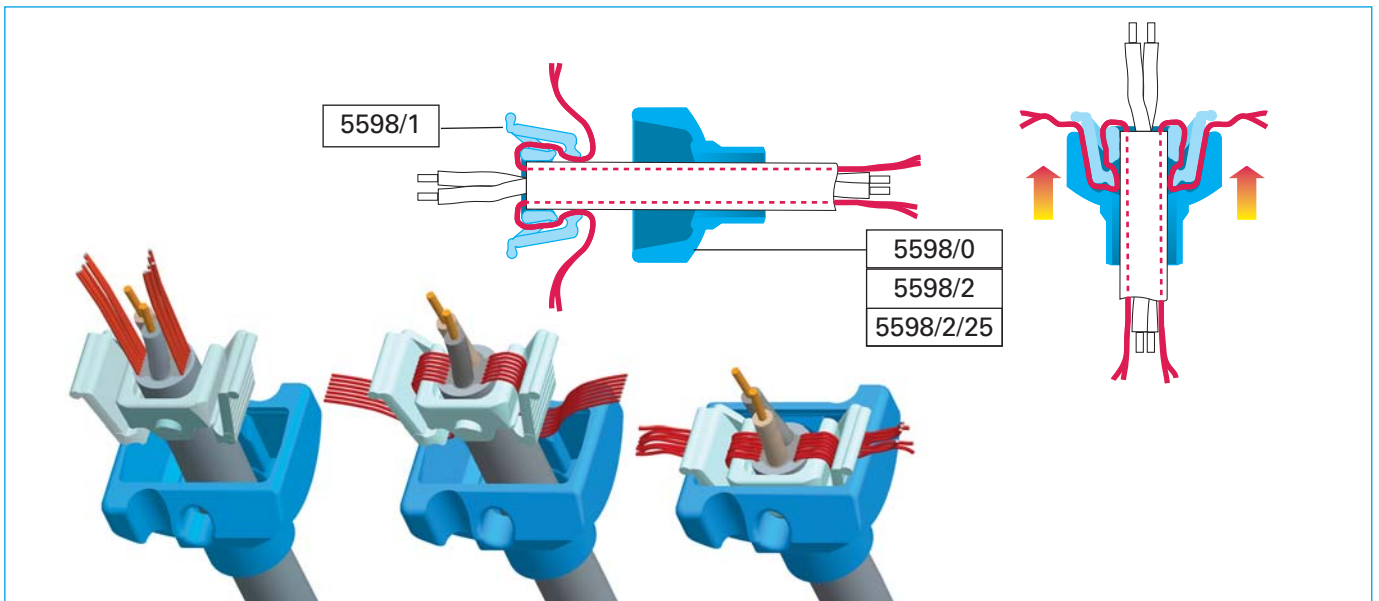


Gancio
Hook

Codice / Code	Dimensioni / Dimensions (mm)					Colore / Colour
	A	B	C	E	S	Materiale / Material → Acc. inox / Stainless steel
5600	45,2	15,6	10,5	10	2,8	

Istruzioni di montaggio ed esempi di utilizzazione

Assembly instructions and application examples

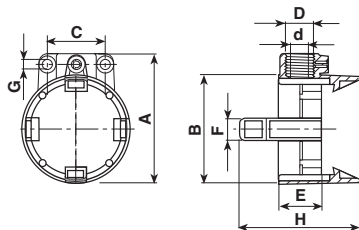




Adattatore doppio per portalampane

Twin support for lampholders

(E27 -G23 -G24 -Gx24 - E14)



Materiale / Material

6 Nylon 66 RV

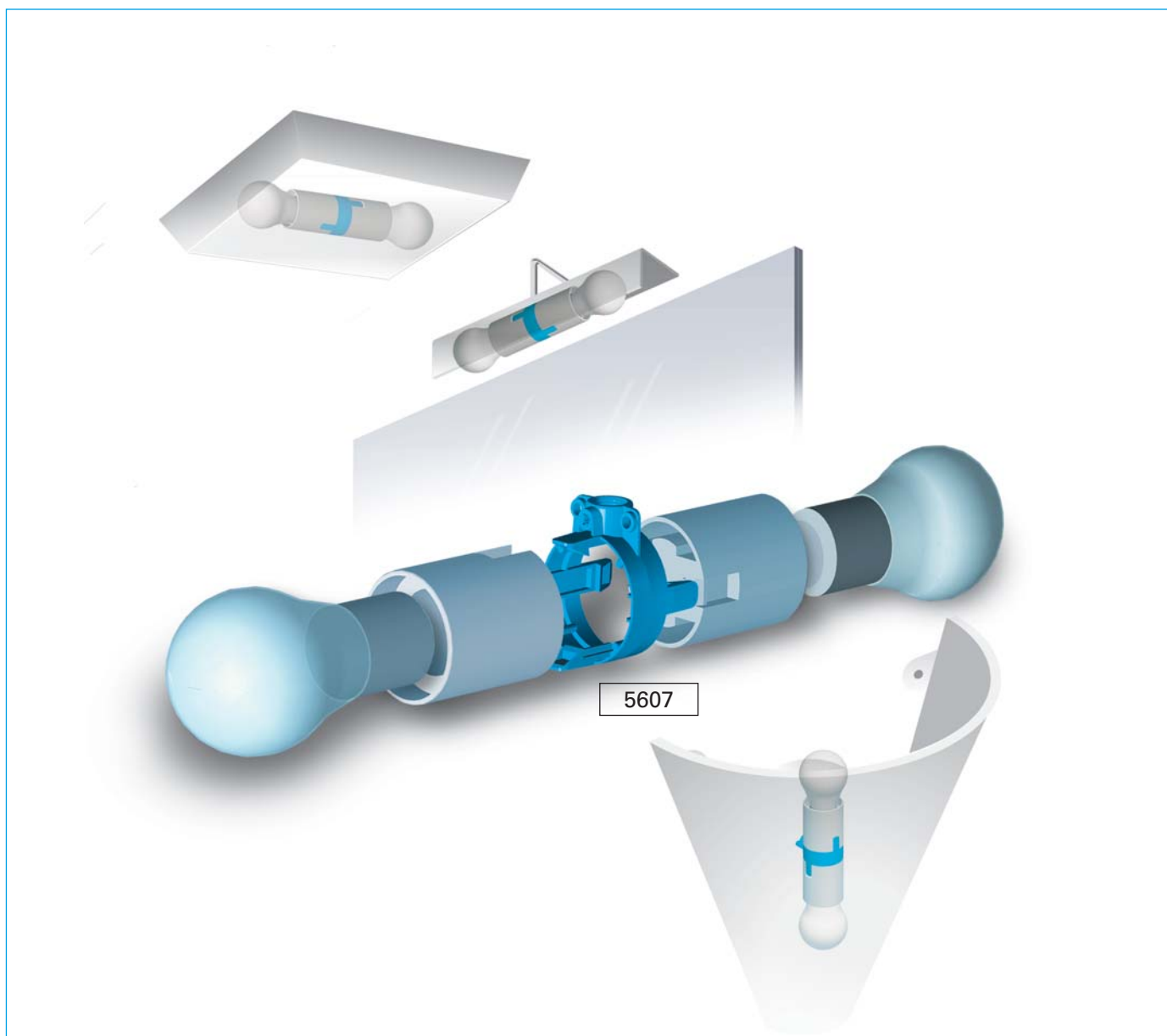
Codice / Code	Dimensioni / Dimensions (mm)									Colore / Colour	
	A	B	C	D	d	E	F	G	H	1	Bianco / White
5607/10	45,5	38	20	M 10x1	8,1	15	8,0	3,2	42	Materiale / Material →	6
5607/13	45,5	38	20	M 13x1	8,8	15	8,0	3,2	42		6
5607/14/10	34,5	26	20	M 10x1	8,1	15	7,8	3,2	42		6

L'adattatore è fornito con vite autofilettante separata per assicurare l'anti-rotazione sul tubetto.

The support is supplied with separate self-threading screw for anti-rotation device.

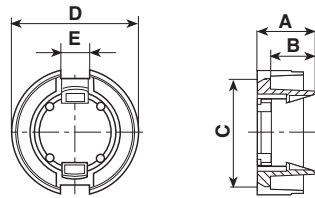
Esempi di utilizzazione

Application examples



Adattatore/riduttore da portalampade E27 a E14

Adapter from E27 to E14 lampholders

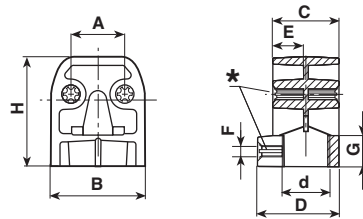
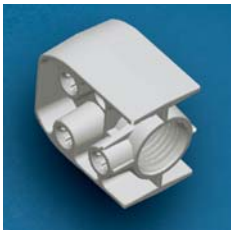


Materiale / Material
6 Nylon 66 RV

Codice / Code	Dimensioni / Dimensions (mm)					Colore / Colour
	A	B	C	D	d	
5607/2714	17,5	13,5	31,5	38	7,8	1 Bianco White Materiale / Material → 6

Adattatore doppio per portalampade Tipo G9

Adapter for lampholders Type G9



Materiale / Material
25 Polifenilensolfuro RV40

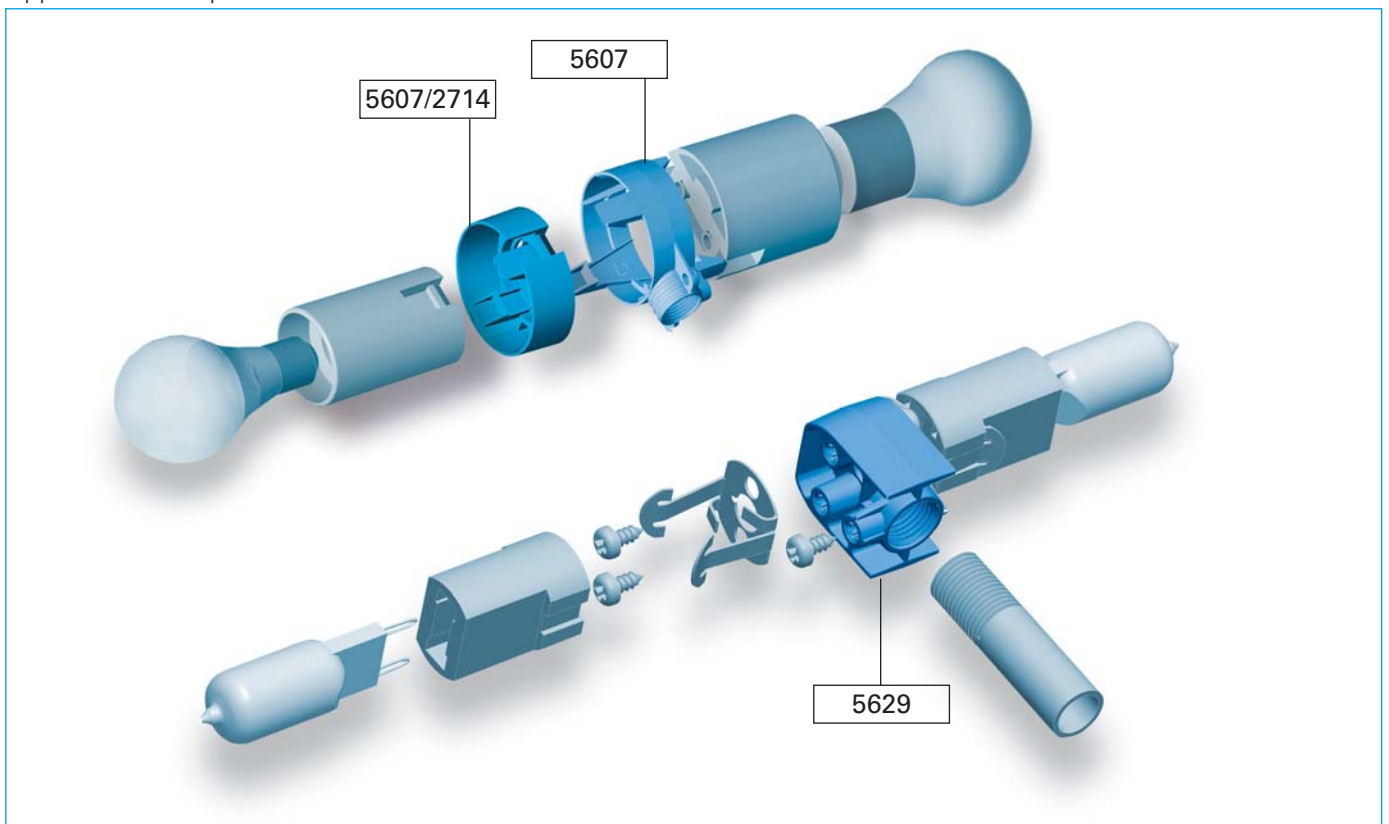
Codice / Code	Dimensioni / Dimensions (mm)										Colore / Colour
	A	B	C	D	d	E	F	G	H		
5629	11,5	19,7	14	17,2	M 10x1	6,5	3	7	23,4	0 Neutro Natural Materiale / Material → 25	

L'adattatore è fornito con 5 viti autofilettanti separate per fissare i portalampade e per assicurare l'anti-rotazione sul tubetto. Le staffe a molla per il portalampade non sono fornite.

The support is supplied with 5 separate self-threading screws to fix the lampholders and for anti-rotation device. The spring brackets for the lampholders are not supplied.

Esempi di utilizzazione

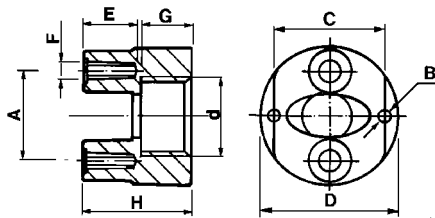
Application examples





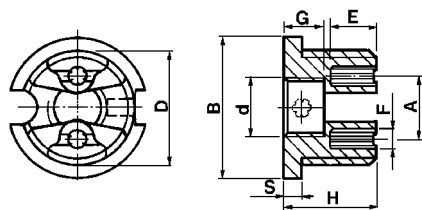
Supporti portalampade alogene

Lampholder supports for halogen lamps



Materiale / Material
19 Polifenilensolfuro

Codice / Code	Dimensioni / Dimensions (mm)									Colore / Colour
	A	B	C	D	d	E	F	G	H	0 Neutro Natural
5459/0813	11	1,5	13,8	17	M 8x1	6,2	3	6,4	13	Materiale / Material → 19
5459/08	11	1,5	13,8	17	M 8x1	14,4	3	6,4	22,5	19
5459/13	11	1,5	13,8	17	M 10x1	6,2	3	6,4	13	19
5459	11	1,5	13,8	17	M 10x1	14,4	3	6,4	22,5	19

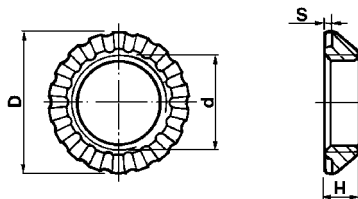


Materiale / Material
19 Polifenilensolfuro

Codice / Code	Dimensioni / Dimensions (mm)									Colore / Colour
	A	B	D	d	E	F	G	H	S	0 Neutro Natural
5479	11	26,5	M 20x2	M 10x1	11,2	3	6,5	19	2,5	Materiale / Material → 19

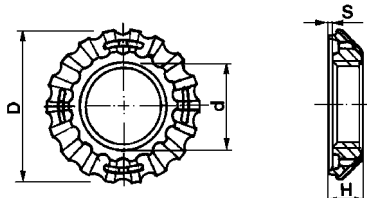
Ghiere per supporti portalampade alogene

Ring nuts for halogen lampholder supports



Materiale / Material
19 Polifenilensolfuro

Codice / Code	Dimensioni / Dimensions (mm)				Colore / Colour
	D	d	H	S	0 Neutro Natural
5478	29	M 20x2	7	1,5	Materiale / Material → 19

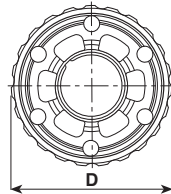
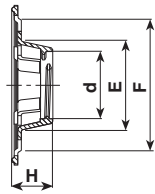


Materiale / Material
19 Polifenilensolfuro

Codice / Code	Dimensioni / Dimensions (mm)				Colore / Colour
	D	d	H	S	0 Neutro Natural
5523	35	M 20x2	8	0,9	Materiale / Material → 19

Ghiere per supporti portalampane alogene

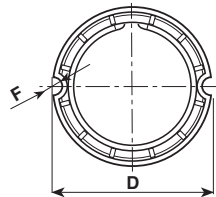
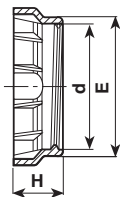
Ring nuts for halogen lampholder supports



Materiale / Material

25 Polifenilensolfuro RV40

Codice / Code	Dimensioni / Dimensions (mm)					Colore / Colour
	A	B	C	D	d	
5594/2	50	M 21x2	27,5	41,5	12,4	0 Neutro Natural Materiale Material → 25



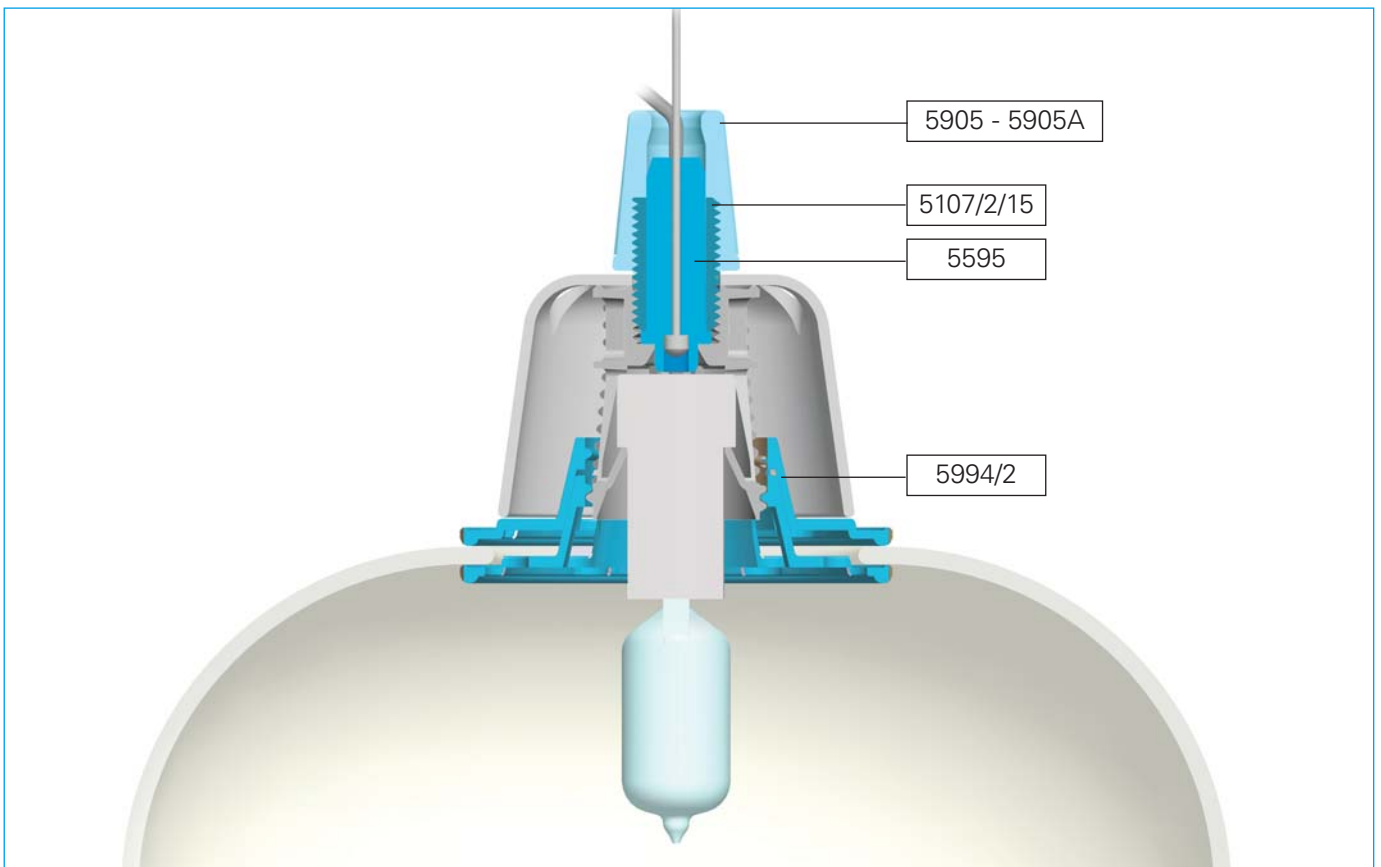
Materiale / Material

25 Polifenilensolfuro RV40

Codice / Code	Dimensioni / Dimensions (mm)					Colore / Colour
	A	B	C	D	d	
5594/1	26	M 21x2	23	3	8	0 Neutro Natural Materiale Material → 25

Esempi di utilizzazione

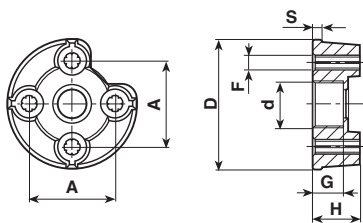
Application examples





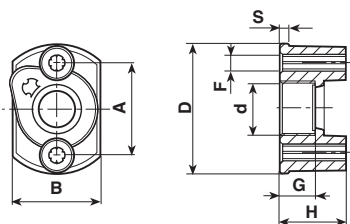
Supporti per portalampade alogene Tipo GU10 e GZ10

Lampholder supports for halogen lamps Type GU10 e GZ10



Materiale / Material
 19 Polifenilensolfuro

Codice / Code	Dimensioni / Dimensions (mm)							Colore / Colour	
	A	D	d	F	G	H	S	0	19
5569/08	18	27,6	M 8x1	3,1	6,5	10	2	Materiale / Material →	19
5569	18	27,6	M 10x1	3,1	6,5	10	2		19

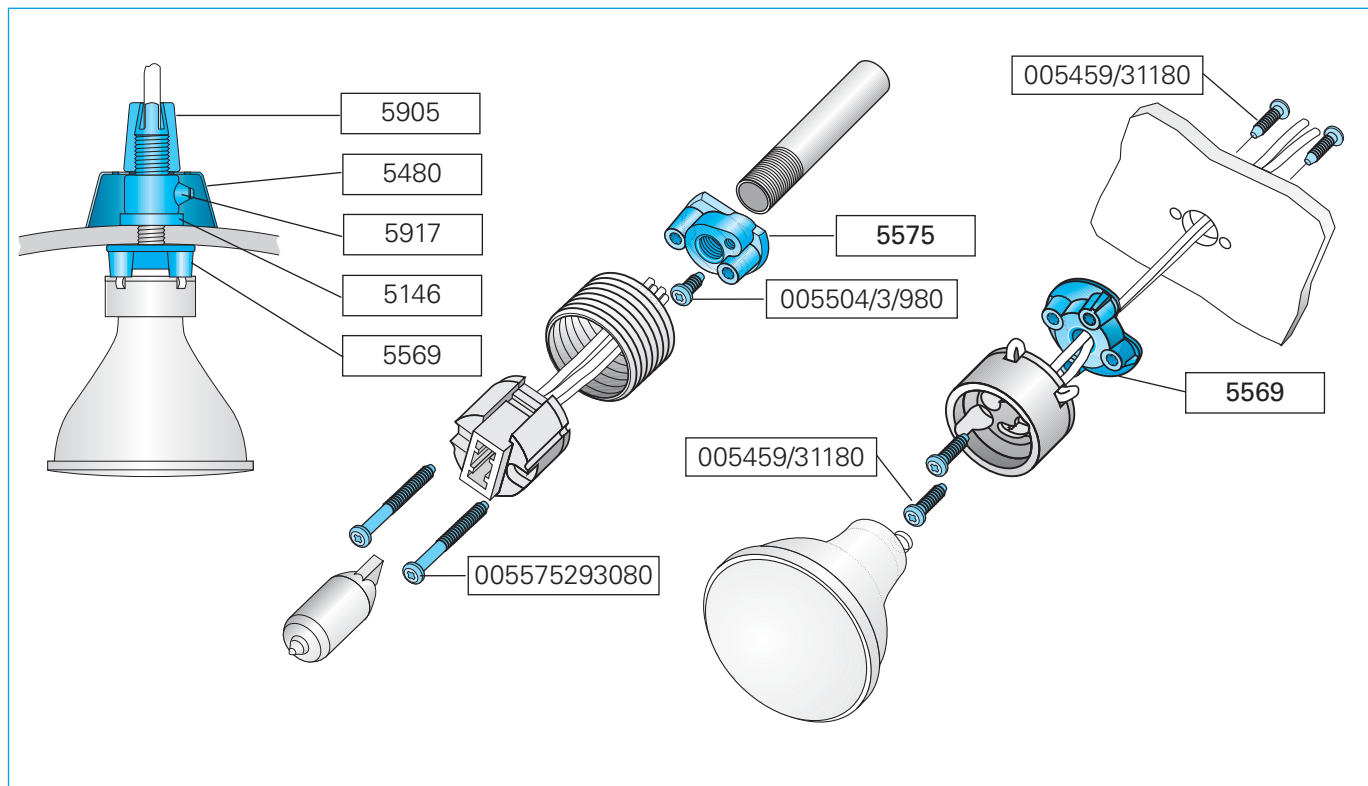


Materiale / Material
 19 Polifenilensolfuro

Codice / Code	Dimensioni / Dimensions (mm)							Colore / Colour		
	A	B	D	d	F	G	H	S	0	19
5575	17	16	24	M 10x1	3,1	6,5	12	2	Materiale / Material →	19

Esempio di utilizzazione

Application example

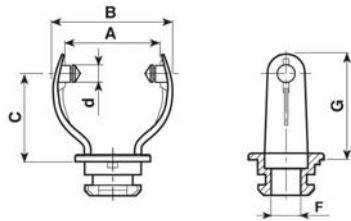


Componenti per faretto

Accessories for spotlight

Forcella snodo

Joint fork



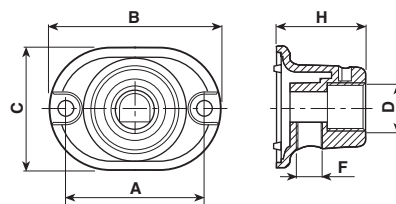
Materiale / Material

6 Nylon 66 RV

Codice / Code	Dimensioni / Dimensions (mm)						Materiale / Material	Colore / Colour
	A	B	C	d	F	G		
5525	21	30	24,4	4,9	8,5	30	6	2 Nero Black

Adattatore base

Base adapter



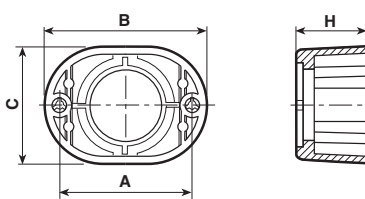
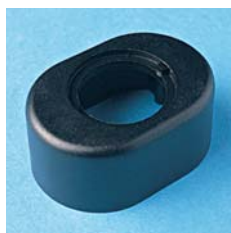
Materiale / Material

6 Nylon 66 RV

Codice / Code	Dimensioni / Dimensions (mm)						Materiale / Material	Colore / Colour
	A	B	C	D	F	G		
5528	30	36	26	M 10x1	M 6x1	19	6	2 Nero Black

Base forcella

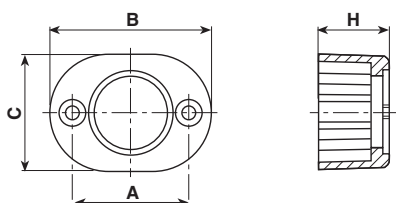
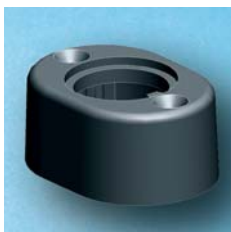
Fork base



Materiale / Material

6 Nylon 66 RV

Codice / Code	Dimensioni / Dimensions (mm)				Materiale / Material	Colore / Colour
	A	B	C	H		
5527	30	36	26	16	6	2 Nero Black



Materiale / Material

6 Nylon 66 RV

Codice / Code	Dimensioni / Dimensions (mm)				Materiale / Material	Colore / Colour
	A	B	C	H		
5527/1	26	36	26	16	6	2 Nero Black

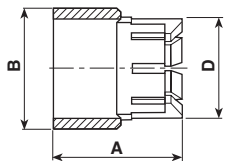
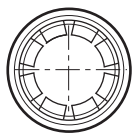


Snodi per faretto

Joints for spotlight

Anello di fermo

Clamping ring



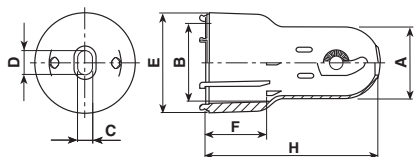
Materiale / Material

9 Acetalica

Codice / Code	Dimensioni / Dimensions (mm)			Colore / Colour
	A	B	D	1 Bianco White
5526	23	21,5	17,7	Materiale / Material → 9

Supporti L.E.D.

Case for L.E.D. modul



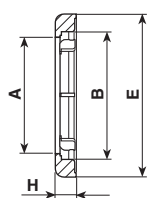
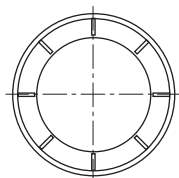
Materiale / Material

6 Nylon 66 RV

Codice / Code	Dimensioni / Dimensions (mm)							Colore / Colour
	A	B	C	D	E	F	H	2 Nero Black
5602/32	28,2	29	5,8	10	39	23,4	67,8	Materiale / Material → 6

Anello di chiusura

Locking ring



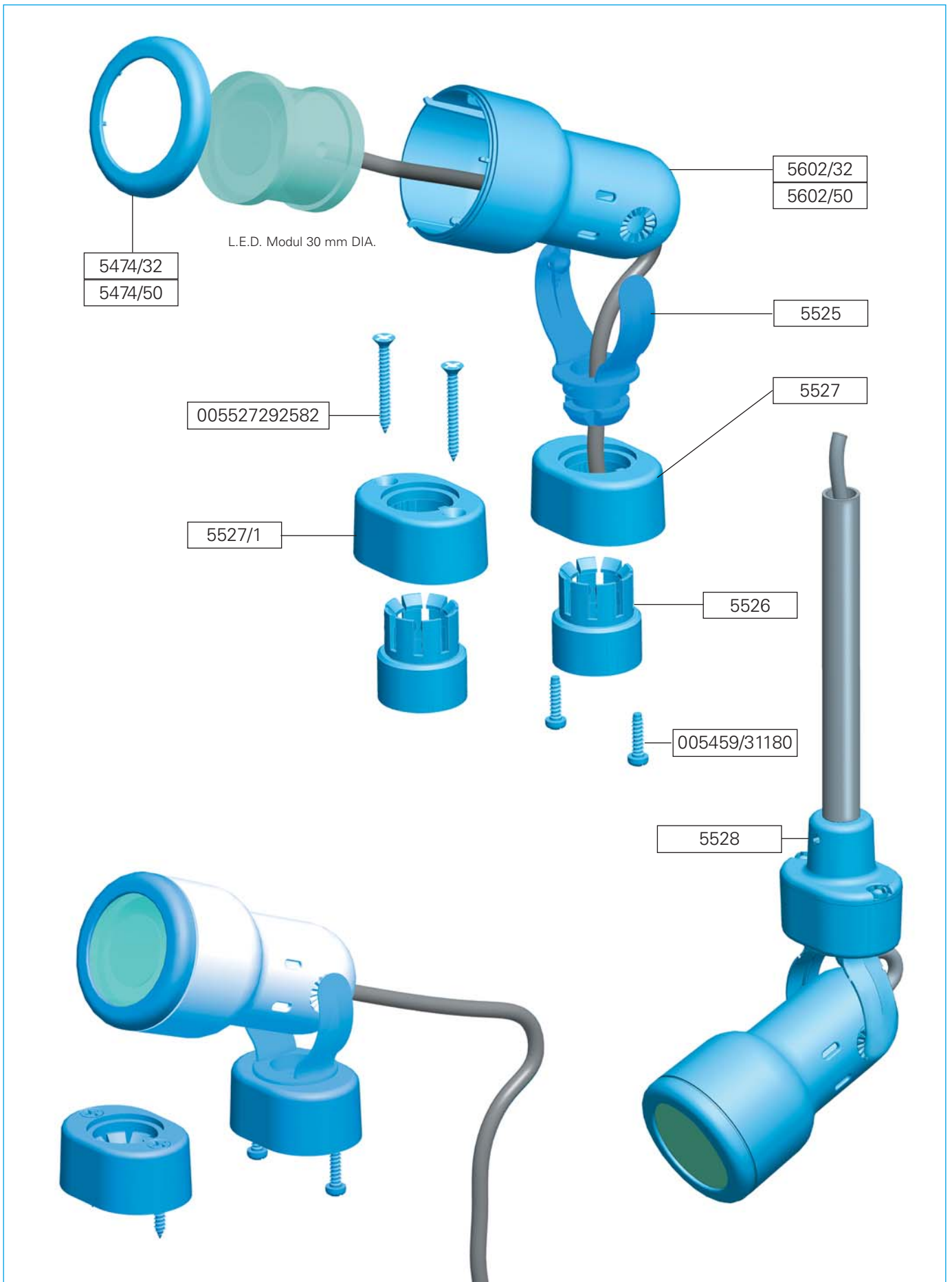
Materiale / Material

6 Nylon 66 RV

Codice / Code	Dimensioni / Dimensions (mm)				Colore / Colour
	A	B	E	H	2 Nero Black
5474/32	27	29	38	1,5	Materiale / Material → 6
5474/50	45,6	50,8	58	11,3	6

Esempio di utilizzazione

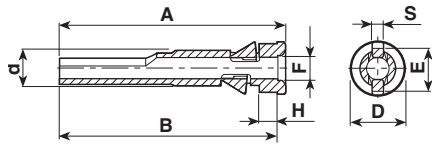
Application example





Bloccacavi

Cable clamps



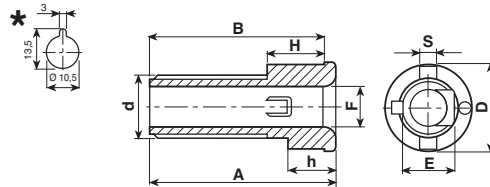
Materiale / Material
6 Nylon 66 RV

□ Approvati per l'utilizzo in Classe II
 Approved for Classe II fittings

Codice / Code	Dimensioni / Dimensions (mm)								Colore / Colour	Omologato / Certified
	A	B	D	d	E	F	H	S		
5472/56	63	61	14,5	M 10x1	13,7	5,6	2	3	2 Nero / Black	Materiale / Material → 6 □ C.S. N°EH 231 ©

Distanziali antirotazione

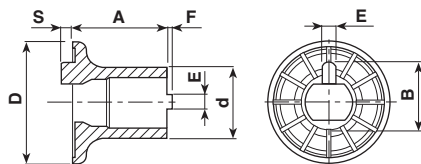
Antirotation spacers



Materiale / Material
6 Nylon 66 RV

Codice / Code	Dimensioni / Dimensions (mm)									Colore / Colour	
	A	B	D	d	E	F	H	h	S		
5472/4/30	32	30	14,5	M 10x1	8,5	6,2	10	6	3	2 Nero / Black	Materiale / Material → 6

* Dima di foratura - Template

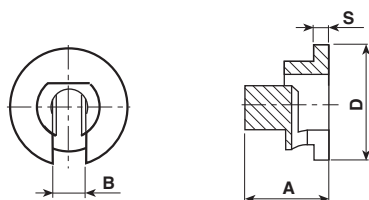


Materiale / Material
6 Nylon 66 RV

Codice / Code	Dimensioni / Dimensions (mm)							Colore / Colour
	A	B	D	d	E	F	S	
5535/20	20	14,5	26	15	2,8	1	2,5	1 Bianco / White 2 Nero / Black
5535/25	25	14,5	26	15	2,8	1	2,5	6
5535/30	30	14,5	26	15	2,8	1	2,5	6

Boccola guidacavo

Cable guide bush

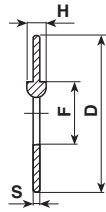
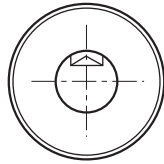
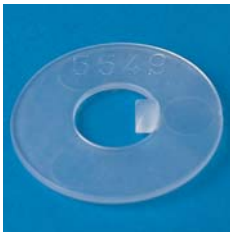


Materiale / Material
6 Nylon 66 RV

Codice / Code	Dimensioni / Dimensions (mm)				Colore / Colour
	A	B	D	S	
5540	14,5	5,6	20	2,5	2 Nero / Black

Rondella

Washer



Materiale / Material

- 0 Polietilene
- 5 Nylon 66

Codice / Code	Dimensioni / Dimensions (mm)				Colore / Colour
	D	F	H	S	
5549	25	10,1	3	1	0 Neutro Natural Materiale / Material → 0 5

Esempi di utilizzazione

Application examples

5472/56

5535/20

5535/25

5535/30

5535/35

5549

5540

5339/6

5038

5104

5472/6/10

Approvati per l'utilizzo in Classe II

Approved for Class II fittings

L'utilizzo congiunto degli articoli:
5472/56 - 5535/---
5549 - 5540 - 5339/6
è omologato con

C.S. N° EH 229

Per cavi: H03VV-F Ø min 4,8 - Ø max 5,6

Combined use of items:
5472/56 - 5535/---
5549 - 5540 - 5339/6
is certified with

C.S. N° EH 229

For cables: H03VV-F Ø min 4,8 - Ø max 5,6

5549

5472/4/30

5540

5339/6

5104

5104/1

5105

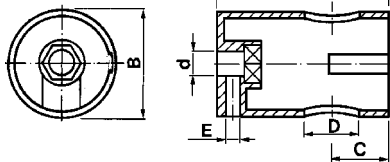
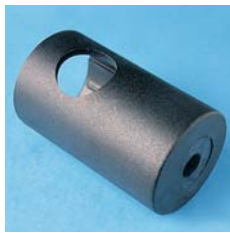
Foro Base Lampada
Hole on Lamp Base

	Resistenza a trazione: 20 Kg Max Tensile Strength: 20 Kgs
	Resistenza a torsione: 350 N cm Max Torsional Strength: 350 N cm
	Forza di Avvitamento Dado: 50 N cm Max torque Nut: 50 N cm



Componenti snodo

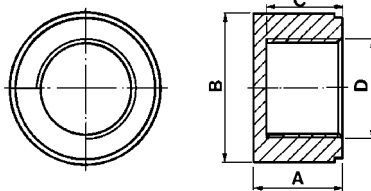
Joint components



Materiale / Material

6 Nylon 66 RV

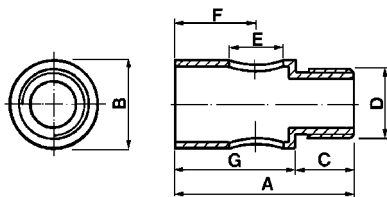
Codice / Code	Dimensioni / Dimensions (mm)						Colore / Colour
	A	B	C	d	D	E	
5880/1	60	36	20	8,5	19	4,6	2 Nero Black Materiale / Material → 6



Materiale / Material

6 Nylon 66 RV

Codice / Code	Dimensioni / Dimensions (mm)				Colore / Colour
	A	B	C	D	
5880/2	22	36	19,5	M 26x2	2 Nero Black Materiale / Material → 6



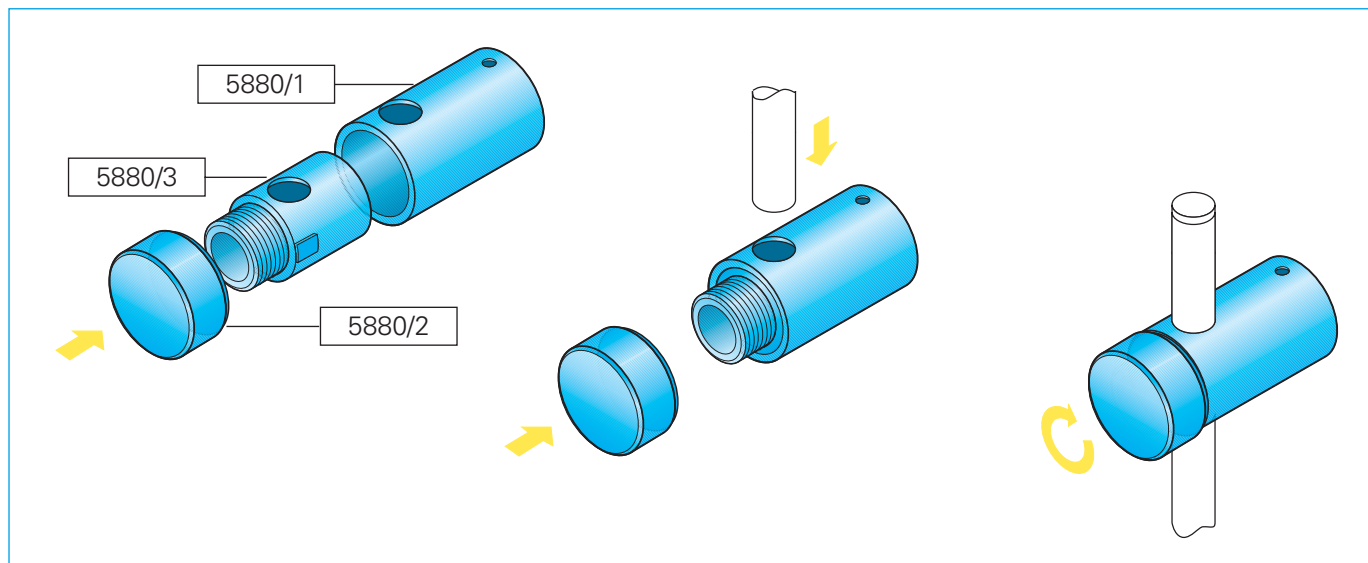
Materiale / Material

6 Nylon 66 RV

Codice / Code	Dimensioni / Dimensions (mm)							Colore / Colour
	A	B	C	D	E	F	G	
5880/3	61	30,8	19	M 26x2	19	28	42	2 Nero Black Materiale / Material → 6

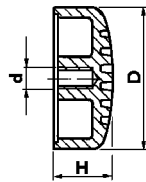
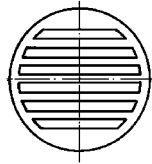
Assemblaggio snodo per apparecchi illuminazione 5880

Joint assembly for lighting fittings 5880



Assemblaggio snodo per apparecchi illuminazione

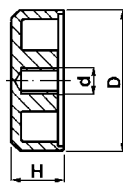
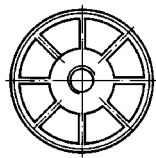
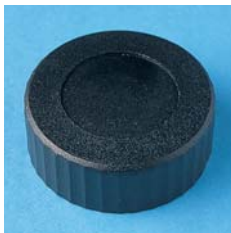
Joint assembly for lighting fittings



Materiale / Material

6 Nylon 66 RV

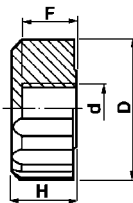
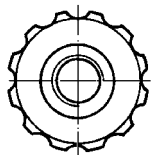
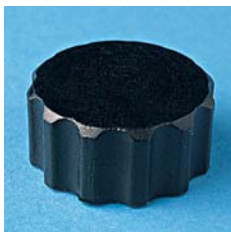
Codice / Code	Dimensioni / Dimensions (mm)			Materiale / Material	Colore / Colour	
	d	D	H		1 Nero Black	2 Nero Black
5218/0/5	M 5x0,8	32,5	14,5	6		
5218/0/6	M 6x1	32,5	14,5	6		
5218/0/8	M 8x1,25	32,5	14,5	6		



Materiale / Material

6 Nylon 66 RV

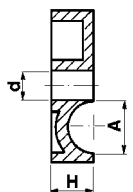
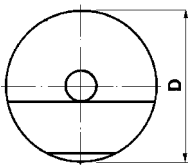
Codice / Code	Dimensioni / Dimensions (mm)			Materiale / Material	Colore / Colour	
	d	D	H		1 Bianco White	2 Nero Black
5218/5	M 5x0,8	32,5	12	6		6
5218/6	M 6x1	32,5	12	6		6
5218/8	M 8x1,25	32,5	12	6		6



Materiale / Material

6 Nylon 66 RV

Codice / Code	Dimensioni / Dimensions (mm)				Materiale / Material	Colore / Colour	
	d	D	F	H		1 Nero Black	2 Nero Black
5208/8	M 8x1,25	22	8	10,5	6		



Materiale / Material

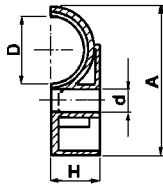
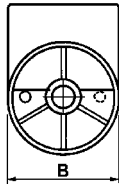
6 Nylon 66 RV

Codice / Code	Dimensioni / Dimensions (mm)				Materiale / Material	Colore / Colour	
	A	d	D	H		1 Nero Black	2 Nero Black
5219/5/6	6	5	29	8	6		
5219/5/8	8	5	29	8	6		
5219/5/10	10	5	29	8	6		
5219/6/10	10	6	29	8	6		



Componenti snodo per apparecchi illuminazione

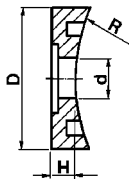
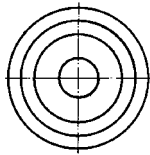
Joint components for lighting fittings



Materiale / Material

6 Nylon 66 RV

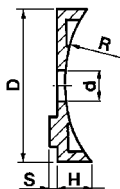
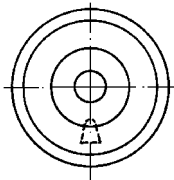
Codice / Code	Dimensioni / Dimensions (mm)					Materiale / Material Material →	Colore / Colour
	A	B	d	D	H		
5420/06	26	20	8,2	6	9	2 Nero Black	6
5420/08	26	20	8,2	8	9	6	6
5420/10	26	20	8,2	10	9	6	6
5295/13	39	29	6,3	13	12,8	6	6
5295/16	39	29	6,3	16	12,8	6	6



Materiale / Material

6 Nylon 66 RV

Codice / Code	Dimensioni / Dimensions (mm)				Materiale / Material Material →	Colore / Colour
	d	D	H	R		
5220/6	6	29	6	25	2 Nero Black	6



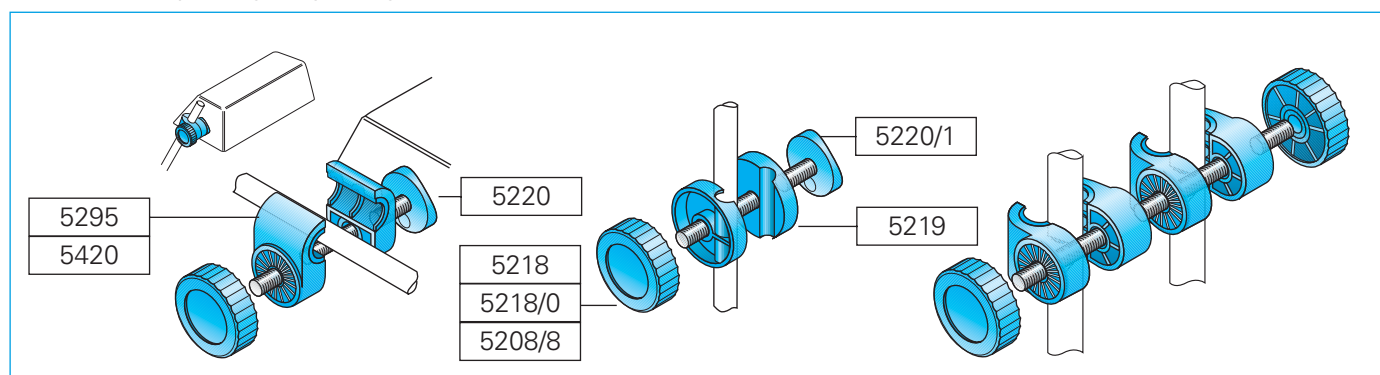
Materiale / Material

6 Nylon 66 RV

Codice / Code	Dimensioni / Dimensions (mm)					Materiale / Material Material →	Colore / Colour
	d	D	H	R	S		
5220/1/6	6	29	6	25	1	2 Nero Black	6

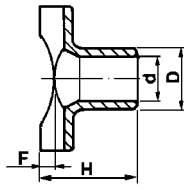
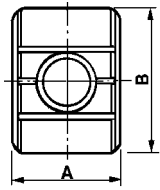
Assemblaggio snodo per apparecchi illuminazione

Joint assembly for lighting fittings



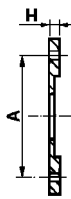
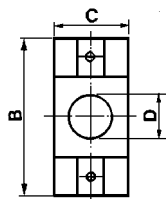
Componenti snodo per parabole

Joint components for parabolic reflectors



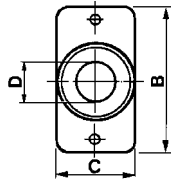
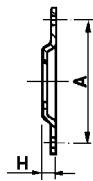
Materiale / Material
6 Nylon 66 RV

Codice / Code	Dimensioni / Dimensions (mm)						Colore / Colour	
	A	B	D	d	F	H	1 Bianco White	2 Nero Black
5446/1	19,5	24	10,5	7	-	17,5	Materiale / Material → 6	6
5446/1/180	19,8	24	10,3	7,2	4	19	6	6

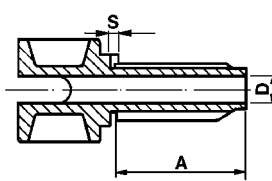


Materiale / Material
6 Nylon 66 RV

Codice / Code	Dimensioni / Dimensions (mm)					Colore / Colour	
	A	B	C	D	H	2 Nero Black	Materiale / Material →
5447/1	30	40	18	10,8	2,5	6	6



Codice / Code	Dimensioni / Dimensions (mm)					Colore / Colour	
	A	B	C	D	H	Materiale / Material →	
005447/2///8	30	36	19	11	3	Acc. zincato/Plated steel	



Materiale / Material
6 Nylon 66 RV

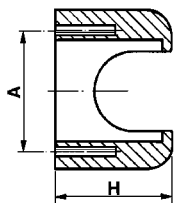
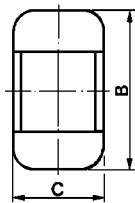
Codice / Code	Dimensioni / Dimensions (mm)					Colore / Colour		Note / Notes
	A	B	D	h	S	1 Bianco White	2 Nero Black	
5447/13	28	11	7	-	-	Materiale / Material → 6	6	
5447/16	37	14,3	7	-	-	6	6	
5447/18	42	16	7	-	-	6	6	
5447/1/13	28	11	7	1,5	1,5	6	6	●
5447/1/16	37	14,3	7	1,5	1,5	6	6	●
5447/1/18	42	16	7	1,5	1,5	6	6	●

- Predisposti per anti-rotazione.
- Arranged for anti-rotation.



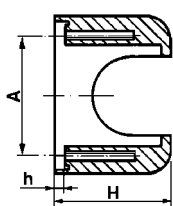
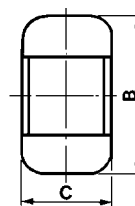
Componenti snodo per parabole

Joint components for parabolic reflectors



Materiale / Material
6 Nylon 66 RV

Codice / Code	Dimensioni / Dimensions (mm)				Colore / Colour	
	A	B	C	H	2 Nero Black	6 Materiale Material →
5446/90	30	39,5	24,5	29		6

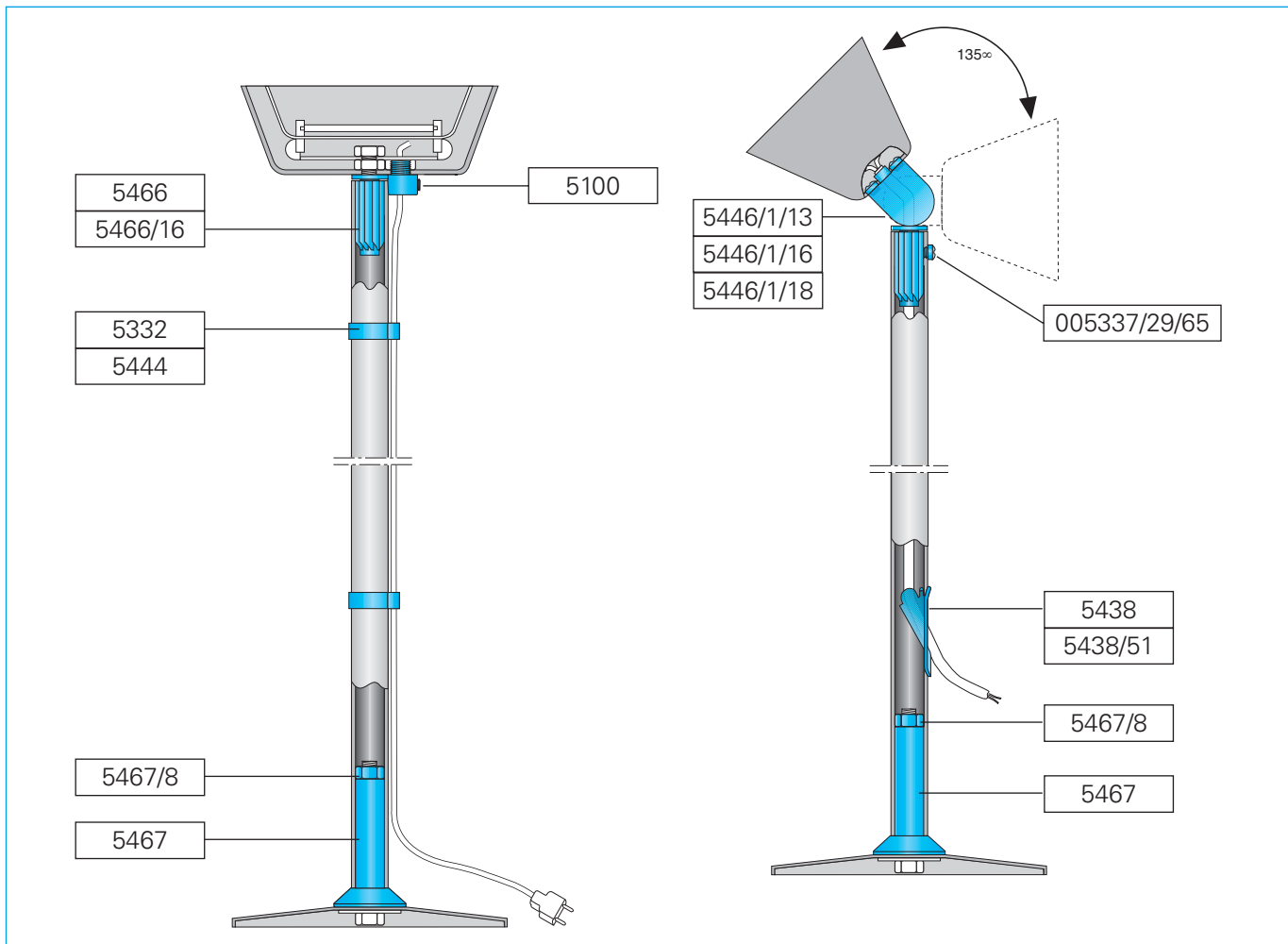


Materiale / Material
6 Nylon 66 RV

Codice / Code	Dimensioni / Dimensions (mm)					Colore / Colour	
	A	B	C	H	h	1 Bianco White	2 Nero Black
5446/2/90	30	39,5	24,5	29	3	6 Materiale Material →	6

Esempio di utilizzazione

Application example



Assemblaggio snodo per parabole

Joint assembly for parabolic reflectors

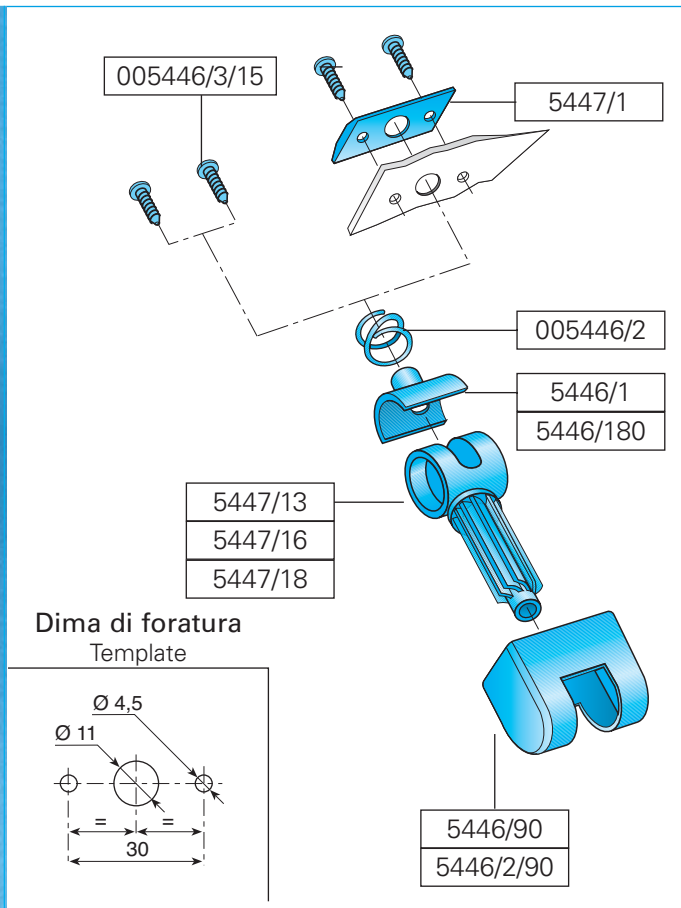
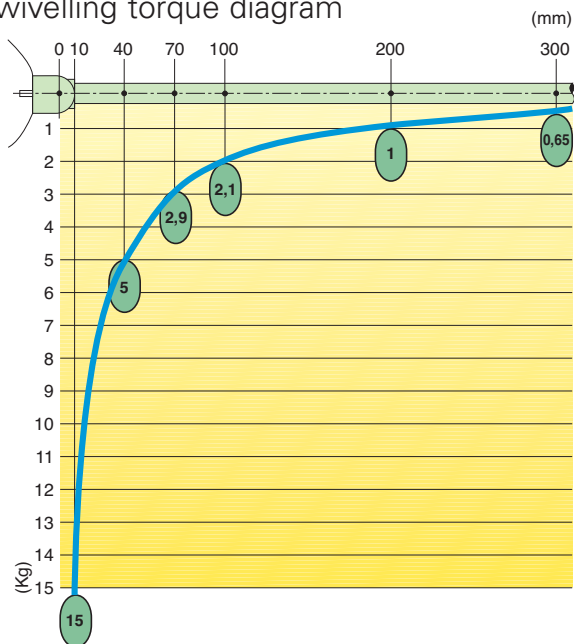


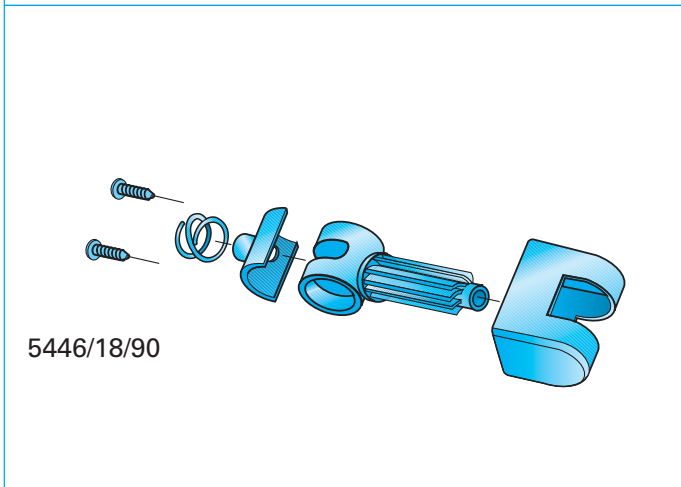
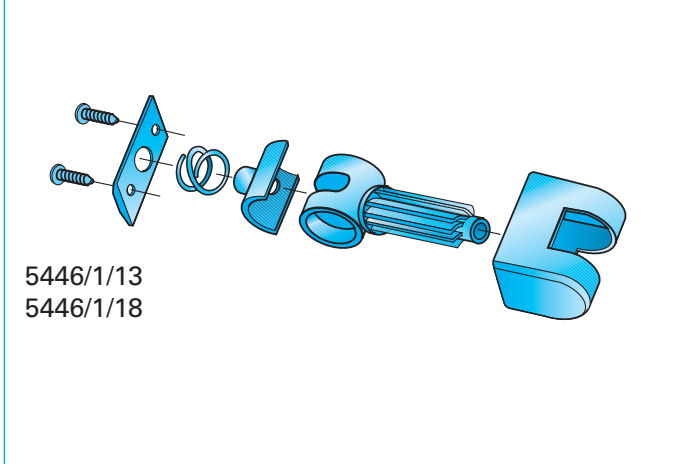
Diagramma carico snodatura

Swivelling torque diagram



Il valore in Kg che viene indicato per ogni snodo a molla è il peso che è possibile applicare al braccio dello snodo ad una distanza in mm dall'asse di snodatura senza che il braccio si pieghi. Naturalmente, maggiore è la distanza in cui il peso viene applicato e proporzionalmente minore è il peso che si può applicare, come mostra il suddetto diagramma.

The Kg value indicated for each spring-joint is the weight that can be hung to the joint arm at a distance of mm from the swivelling axis without causing an arm bending. Of course the greater distance from the swivelling axis you have, the smaller weight you can apply as you can see from the above diagram.



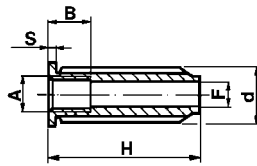


Giunti per tubo

Pipe joints

Giunti filettati

Pipe threaded



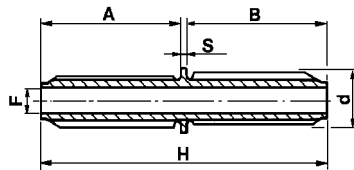
Materiale / Material

6 Nylon 66 RV

Codice / Code	Dimensioni / Dimensions (mm)							Colore / Colour	
	A	B	D	d	F	H	S	1 Nero Black	2 Nero Black
5466/16	M 10x1	10	16	14	7,2	35	1,5	Materiale / Material →	6
5466	M 10x1	10	18	16	7,2	40	1,5		6

Giunti

Pipes



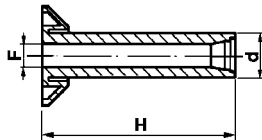
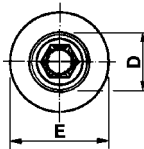
Materiale / Material

6 Nylon 66 RV

Codice / Code	Dimensioni / Dimensions (mm)							Colore / Colour	
	A	B	D	d	F	H	S	1 Bianco White	2 Nero Black
5449/13/13	31,5	29,5	13	11	7	63	2	Materiale / Material →	6
5449/16/16	36	36	16	14,4	7	74	2		6
5449/18/18	44,5	42	18	16	7	88,5	2		6

Blocca tubi piantana

For-lamp pipe lockings



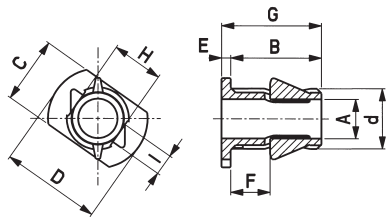
Materiale / Material

6 Nylon 66 RV

Codice / Code	Dimensioni / Dimensions (mm)					Colore / Colour	
	D	d	E	F	H	1 Nero Black	2 Nero Black
5467	18	15,4	34	8,2	63,5	Materiale / Material →	6

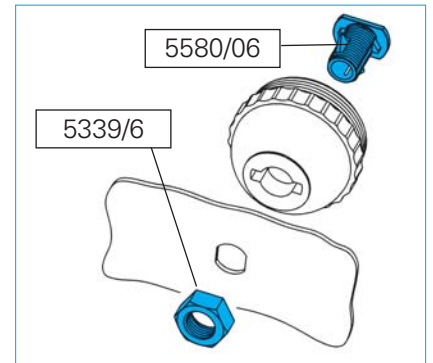
Nipplo anticaduta

Self retaining nipple



Materiale / Material
5 Nylon 66

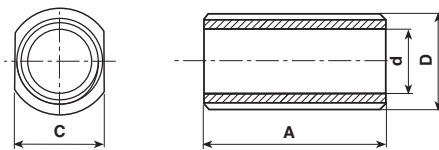
Codice / Code	Dimensioni / Dimensions (mm)									Colore / Colour		
	A	B	C	D	d	E	F	G	H	I	1 Bianco White	2 Nero Black
5580/06	6,5	15	11	16,5	M10x1	1,5	6,5	16,5	8,5	3,5	Materiale Material → 5	5



Nipplo

Nipples

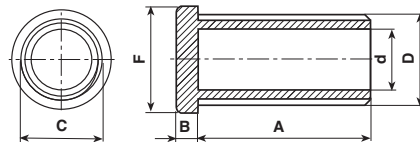
Per tutti i tipi di nipplo la lunghezza del tratto filettato ha toll. ± 1 mm.
 For all nipples thread has ± 1 mm tolerance.



Materiale / Material
6 Nylon 66 Rv

Codice / Code	Dimensioni / Dimensions (mm)				Colore / Colour		
	A	C	D	d	0 Neutro Natural	1 Bianco White	2 Nero Black
5107/2/10	10	8,5	M 10x1	7,1	Materiale Material →	6	6
5107/2/15	15	8,5	M 10x1	7,1	6	6	6
5107/2/20	20	8,5	M 10x1	7,1		6	6
5107/2/25	25	8,5	M 10x1	7,1		6	6
5107/2/30	30	8,5	M 10x1	7,1		6	6
5107/2/35	35	8,5	M 10x1	7,1		6	6

M 10x1: Coppia serraggio max = 130 N cm - M 10x1: Max tightening torque = 130 N cm



Materiale / Material
6 Nylon 66 RV
11 Policarbonato

Codice / Code	Dimensioni / Dimensions (mm)						Colore / Colour		
	A	B	C	D	d	F	0 Neutro Natural	1 Bianco White	2 Nero Black
5016/3/07	7	2,5	12	M 10x1	7	13,8	Materiale Material → 11	6	6
5016/3/010	10	2,5	12	M 10x1	7	13,8		6	6
5016/3/015	15	2,5	12	M 10x1	7	13,8		6	6
5016/3/020	20	2,5	12	M 10x1	7	13,8		6	6
5016/3/025	25	2,5	12	M 10x1	7	13,8		6	6
5016/3/035	35	2,5	12	M 10x1	7	13,8		6	6

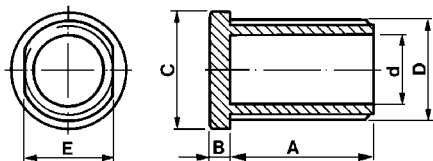
M 10x1: Coppia serraggio max = 130 N cm
 M 10x1: Max tightening torque = 130 N cm



Niplo

Nipples

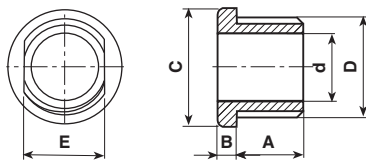
Per tutti i tipi di niplo la lunghezza del tratto filettato ha toll. ± 1 mm.
For all nipples thread has ± 1 mm tolerance.



Materiale / Material
6 Nylon 66 RV

Codice / Code	Dimensioni / Dimensions (mm)						Colore / Colour		
	A	B	C	D	d	E	1 Bianco White	2 Nero Black	
5016/302/7	7	2,5	12	M 10x1	7	8,5	Materiale Material → 6	6	
5016/302/10	10	2,5	12	M 10x1	7	8,5	6	6	
5016/302/15	15	2,5	12	M 10x1	7	8,5	6	6	
5016/302/20	20	2,5	12	M 10x1	7	8,5	6	6	
5016/302/25	25	2,5	12	M 10x1	7	8,5	6	6	
5016/302/30	30	2,5	12	M 10x1	7	8,5	6	6	
5016/302/35	35	2,5	12	M 10x1	7	8,5	6	6	

M 10x1: Coppia serraggio max = 130 N cm
M 10x1: Max tightening torque = 130 N cm



Materiale / Material
6 Nylon 66 RV
11 Policarbonato

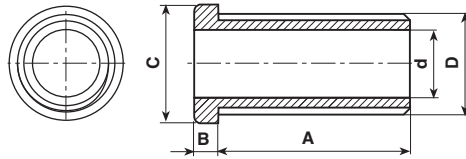
Codice/Code	Dimensioni / Dimensions (mm)						Colore / Colour		
	A	B	C	D	d	E	0 Neutro Natural	1 Bianco White	2 Nero Black
5016/3/2/7	7	2,5	12	M 10x1	7	8,5	Materiale Material → 11		6
5016/3/2/10	10	2,5	12	M 10x1	7	8,5		6	6
5016/3/2/15	15	2,5	12	M 10x1	7	8,5		6	6
5016/3/2/20	20	2,5	12	M 10x1	7	8,5		6	6
5016/3/2/25	25	2,5	12	M 10x1	7	8,5		6	6
5016/3/2/30	30	2,5	12	M 10x1	7	8,5			6
5016/3/2/35	35	2,5	12	M 10x1	7	8,5			6

M 10x1: Coppia serraggio max = 130 N cm
M 10x1: Max tightening torque = 130 N cm

Niplo (8x1 / 10x1)

Nipples (8x1 / 10x1)

Per tutti i tipi di niplo la lunghezza del tratto filettato ha toll. ± 1 mm.
For all nipples thread has ± 1 mm tolerance.



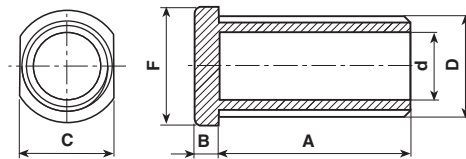
Materiale / Material

6 Nylon 66 RV

11 Policarbonato

Codice / Code	Dimensioni / Dimensions (mm)					Materiale / Material	Colore / Colour			
	A	B	C	D	d		0 Neutro Natural	1 Bianco White	2 Nero Black	4 Oro Gold
5475/3/05	5	2,5	10	M 8x1	5,6		6	6		
5475/3/07	7	2,5	10	M 8x1	5,6	11	6	6		
5016/3/7	7	2,5	12	M 10x1	7	11	6	6		6
5016/3/10	10	2,5	12	M 10x1	7		6	6		
5016/3/15	15	2,5	12	M 10x1	7		6	6		
5016/3/20	20	2,5	12	M 10x1	7		6	6		
5016/3/25	25	2,5	12	M 10x1	7		6	6		
5016/3/30	30	2,5	12	M 10x1	7		6	6		
5016/3/35	35	2,5	12	M 10x1	7		6	6		

M 8x1: Coppia serraggio max = 90 N cm - M 10x1: Coppia serraggio max = 130 N cm
M 8x1: Max tightening torque = 90 N cm - M 10x1: Max tightening torque = 130 N cm



Materiale / Material

6 Nylon 66 RV

Codice / Code	Dimensioni / Dimensions (mm)						Materiale / Material	Colore / Colour	
	A	B	C	D	d	F		1 Bianco White	2 Nero Black
5107/0/7	7	3	12	M 10x1	7	13,8		6	
5107/0/10	10	3	12	M 10x1	7	13,8	6	6	
5107/0/15	15	3	12	M 10x1	7	13,8	6	6	
5107/0/20	20	3	12	M 10x1	7	13,8		6	
5107/0/30	30	3	12	M 10x1	7	13,8		6	
5107/0/35	35	3	12	M 10x1	7	13,8	6		

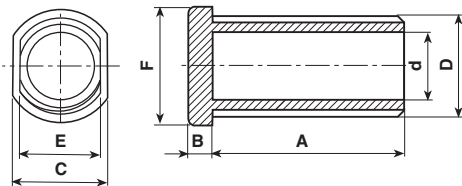
M 10x1: Coppia serraggio max = 130 N cm
M 10x1: Max tightening torque = 130 N cm



Niplo

Nipples

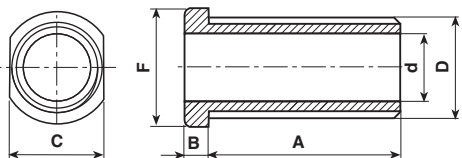
Per tutti i tipi di niplo la lunghezza del tratto filettato ha toll. ± 1 mm.
For all nipples thread has ± 1 mm tolerance.



Materiale / Material
6 Nylon 66 RV

Codice / Code	Dimensioni / Dimensions (mm)							Colore / Colour	
	A	B	C	D	d	E	F	1 Bianco White	2 Nero Black
5107/0/207	7	3	12	M 10x1	7	8,5	13,8	6	6
5107/0/210	10	3	12	M 10x1	7	8,5	13,8	6	6
5107/0/215	15	3	12	M 10x1	7	8,5	13,8		6
5107/0/220	20	3	12	M 10x1	7	8,5	13,8		6
5107/0/230	30	3	12	M 10x1	7	8,5	13,8		6

M 10x1: Coppia serraggio max = 130 N cm
M 10x1: Max tightening torque = 130 N cm



Materiale / Material
6 Nylon 66 RV

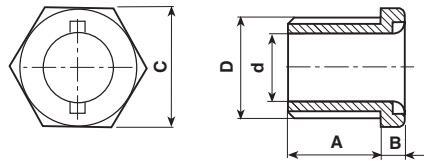
Codice / Code	Dimensioni / Dimensions (mm)						Colore / Colour	
	A	B	C	D	d	F	1 Bianco White	2 Nero Black
5107/7	7	3	12	M 10x1	7	13,8	6	6
5107/10	10	3	12	M 10x1	7	13,8	6	6
5107/15	15	3	12	M 10x1	7	13,8	6	6
5107/20	20	3	12	M 10x1	7	13,8	6	6
5107/25	25	3	12	M 10x1	7	13,8		6
5107/30	30	3	12	M 10x1	7	13,8	6	6
5107/35	35	3	12	M 10x1	7	13,8		6

M 10x1: Coppia serraggio max = 130 N cm
M 10x1: Max tightening torque = 130 N cm

Nipplo a testa esagonale (8x1 / 10x1)

Hexagonal head nipples (8x1 / 10x1)

Per tutti i tipi di nipplo la lunghezza del tratto filettato ha toll. ± 1 mm.
For all nipples thread has ± 1 mm tolerance.

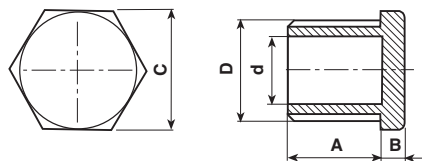


Materiale / Material

6 Nylon 66 RV

Codice / Code	Dimensioni / Dimensions (mm)					Materiale / Material →	Colore / Colour		
	A	B	C	D	d		1 Bianco White	2 Nero Black	4 Oro Gold
5475/05	5,5	3	10	M 8x1	5	6	6		
5475/07	7	2	10	M 8x1	5	6	6		
5016/7	7	3	12	M 10x1	7,0	6	6	6	
5016/10	10	3	12	M 10x1	7,0	6	6		
5016/15	15	3	12	M 10x1	7,0	6	6		
5016/20	20	3	12	M 10x1	7,0		6		
5016/25	25	3	12	M 10x1	7,0	6	6		
5016/30	30	3	12	M 10x1	7,0	6	6		
5016/35	35	3	12	M 10x1	7,0		6		

M 8x1: Coppia serraggio max = 90 N cm - M 10x1: Coppia serraggio max = 130 N cm
M 8x1: Max tightening torque = 90 N cm - M 10x1: Max tightening torque = 130 N cm



Materiale / Material

6 Nylon 66 RV

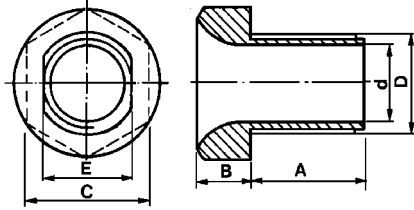
Codice / Code	Dimensioni / Dimensions (mm)					Materiale / Material →	Colore / Colour	
	A	B	C	D	d		1 Bianco White	2 Nero Black
5016/0/7	7	3	12	M 10x1	7,0	6	6	
5016/0/10	10	3	12	M 10x1	7,0	6	6	
5016/0/15	15	3	12	M 10x1	7,0	6	6	
5016/0/20	20	3	12	M 10x1	7,0	6	6	
5016/0/25	25	3	12	M 10x1	7,0	6	6	
5016/0/30	30	3	12	M 10x1	7,0	6	6	
5016/0/35	35	3	12	M 10x1	7,0	6	6	



Nipplo a testa esagonale

Hexagonal head nipples

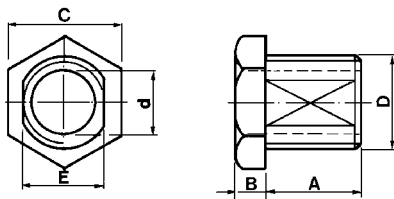
Per tutti i tipi di nipplo la lunghezza del tratto filettato ha toll. ± 1 mm.
For all nipples thread has ± 1 mm tolerance.



Materiale / Material

- 6 Nylon 66 RV
- 18 Polibutil RV-AE

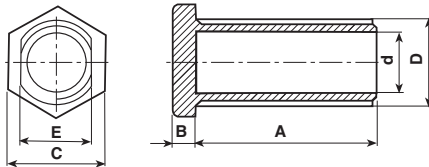
Codice / Code	Dimensioni / Dimensions (mm)						Colore / Colour	
	A	B	C	D	d	E	1 Bianco White	2 Nero Black
5125/3/510	10	3,5	17	M 13x1	10	11,5	Materiale Material →	6 18
5125	10	7	17	M 13x1	10	11,5		6 18
5125/15	15	7	17	M 13x1	10	11,5		6



Materiale / Material

- 6 Nylon 66 RV

Codice / Code	Dimensioni / Dimensions (mm)						Colore / Colour	
	A	B	C	D	d	E	1 Bianco White	2 Nero Black
5016/2/7	7	3	12	M 10x1	7	8,5	Materiale Material →	6 6
5016/2/10	10	3	12	M 10x1	7	8,5		6
5016/2/15	15	3	12	M 10x1	7	8,5		6 6
5016/2/20	20	3	12	M 10x1	7	8,5		6 6
5016/2/25	25	3	12	M 10x1	7	8,5		6 6
5016/2/30	30	3	12	M 10x1	7	8,5		6
5016/2/35	35	3	12	M 10x1	7	8,5		6



Materiale / Material

- 6 Nylon 66 RV

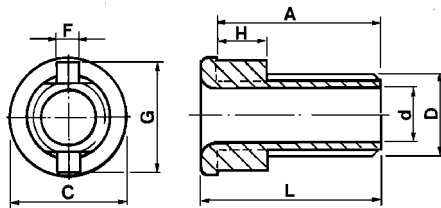
Codice / Code	Dimensioni / Dimensions (mm)						Colore / Colour	
	A	B	C	D	d	E	1 Bianco White	2 Nero Black
5016/0/210	10	3	12	M 10x1	7	8,4	Materiale Material →	6 6

M 10x1: Coppia serraggio max = 130 N cm - M 10x1: Max tightening torque = 130 N cm

Niplo con chiavetta

Detent nipples

Per tutti i tipi di niplo la lunghezza del tratto filettato ha toll. ± 1 mm.
For all nipples thread has ± 1 mm tolerance.



Materiale / Material
6 Nylon 66 RV

Approvati per l'utilizzo in Classe II
Approved for Classe II fittings

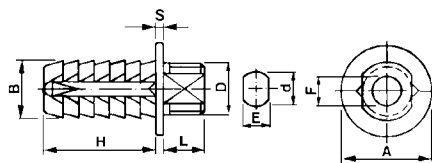
Codice / Code	Dimensioni / Dimensions (mm)								Colore / Colour		Omologato / Certified	
	A	C	D	d	F	G	H	L	1 Bianco / White	2 Nero / Black		
5472/10	10	14,5	M 10x1	6,8	3	13,8	6	12	Materiale / Material →	6	6	<input type="checkbox"/> C.S. N°EH 233 ©
5472/15	15	14,5	M 10x1	6,8	3	13,8	6	17		6	6	<input type="checkbox"/> C.S. N°EH 233 ©
5472/20	20	14,5	M 10x1	6,8	3	13,8	6	22		6	6	<input type="checkbox"/> C.S. N°EH 233 ©
5472/25	25	14,5	M 10x1	6,8	3	13,8	6	27		6	6	<input type="checkbox"/> C.S. N°EH 233 ©
5472/30	30	14,5	M 10x1	6,8	3	13,8	6	32		6		<input type="checkbox"/> C.S. N°EH 233 ©
5472/35	35	14,5	M 10x1	6,8	3	13,8	6	37		6	6	<input type="checkbox"/> C.S. N°EH 233 ©

M 10x1: Coppia serraggio max = 80 N cm - M 10x1: Max tightening torque = 80 N cm

Niplo a pressione

Pression nipples

Per tutti i tipi di niplo la lunghezza del tratto filettato ha toll. ± 1 mm.
For all nipples thread has ± 1 mm tolerance.



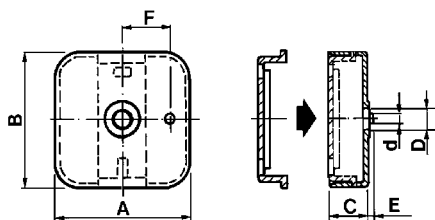
Materiale / Material
6 Nylon 66 RV

Codice / Code	Dimensioni / Dimensions (mm)								Colore / Colour		Omologato / Certified		
	A	B	D	d	E	F	H	L	S	1 Bianco / White		2 Nero / Black	
5514/15	18	11	M 10x1	10,3	8,5	6,2	15	6,5	1,5	Materiale / Material →	6	6	<input type="checkbox"/> C.S. N°EH 233 ©
5514	18	11	M 10x1	10,3	8,5	6,2	22	6,5	1,5		6	6	<input type="checkbox"/> C.S. N°EH 233 ©

M 10x1: Coppia serraggio max = 130 N cm - M 10x1: Max tightening torque = 130 N cm



Basi a parete Spotlight mounts

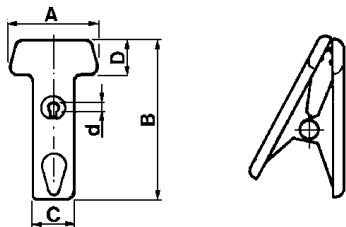


Materiale / Material

2 ABS

Codice / Code	Dimensioni / Dimensions (mm)							Colore / Colour		
	A	B	C	D	d	E	F	1 Bianco White	2 Nero Black	
5851	68,5	68,5	19	10	4	3	24	Materiale Material → 2	2	

Pinze spot Spotlight pliers



Materiale / Material

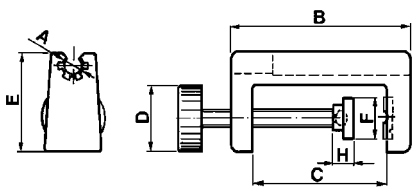
6 Nylon 66 RV

11 Policarbonato

Codice / Code	Dimensioni / Dimensions (mm)					Colore / Colour		
	A	B	C	D	d	0 Neutro Natural	1 Bianco White	2 Nero Black
5855/10-10	64	115	30	25	10	Materiale Material → 11	6	6

Forniti smontati.
Completely knocked down.

Morsetti Clamps



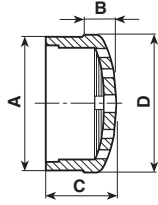
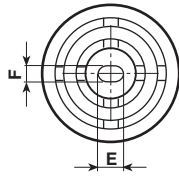
Materiale / Material

6 Nylon 66 RV

Codice / Code	Dimensioni / Dimensions (mm)							Colore / Colour	
	A	B	C	D	E	F	H	1 Bianco White	2 Nero Black
5333/10	10	89	67	32	49	20	10	Materiale Material → 6	6
5333/13	13	89	67	32	49	20	10	6	6

Forniti smontati.
Completely knocked down.

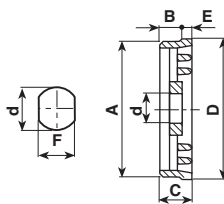
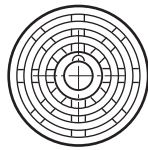
Areatori Areators



Materiale / Material

6 Nylon 66 RV

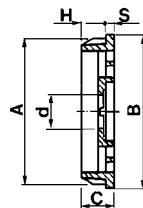
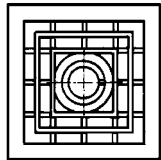
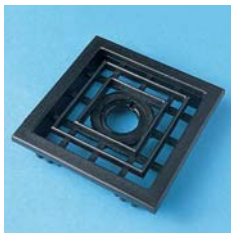
Codice / Code	Dimensioni / Dimensions (mm)						Colore / Colour	
	A	B	C	D	E	F	1 Bianco White	2 Nero Black
5342	33	8	18	35	6	4	Materiale Material → 6	6



Materiale / Material

6 Nylon 66 RV

Codice / Code	Dimensioni / Dimensions (mm)							Colore / Colour	
	A	B	C	d	D	E	F	1 Bianco White	2 Nero Black
5150	48,5	8	11	10,5	49,5	3	-	Materiale Material → 6	6
5150/0	48,5	8	11	0	49,5	3	-		6
5150/7	48,5	8	11	7	49,5	3	-		6
5150/2	48,5	8	11	10,5	49,5	3	8,4		6
5260	53	7,5	11	11	55	3,5	-		6

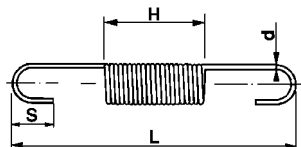


Materiale / Material

6 Nylon 66 RV

Codice / Code	Dimensioni / Dimensions (mm)						Colore / Colour	
	A	B	C	d	H	S	1 Bianco White	2 Nero Black
5221	46,5	50	10,5	10,5	7,5	3	Materiale Material →	6
5261	56,5	60	10,5	11	7,5	3	6	6

Molle Springs



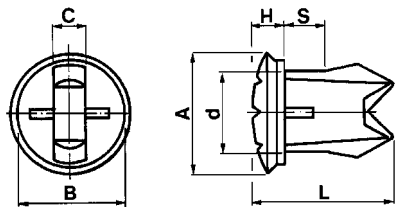
Codice / Code	Dimensioni / Dimensions (mm)					Colore / Colour
	D	d	H	L	S	
5459/2//I/80	4	0,5	27	40	2,4	Materiale Material → Acc. inox/Stainless steel

Carico molla: 42,5 mm = 220 g - 67 mm = 770 g - Spring load: 42,5 mm = 220 g - 67 mm = 770 g



Fermi a scatto plafoniera

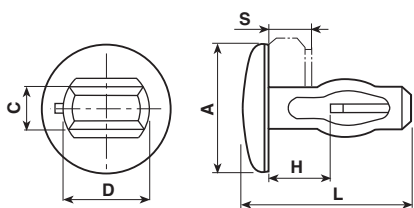
Snap fasteners for ceiling fittings



Materiale / Material

6 Nylon 66 RV

Codice / Code	Dimensioni / Dimensions (mm)							Colore / Colour
	A	B	C	d	H	L	S	
5395	15	13	4	10	4	14	2	1 Bianco White Materiale / Material → 6



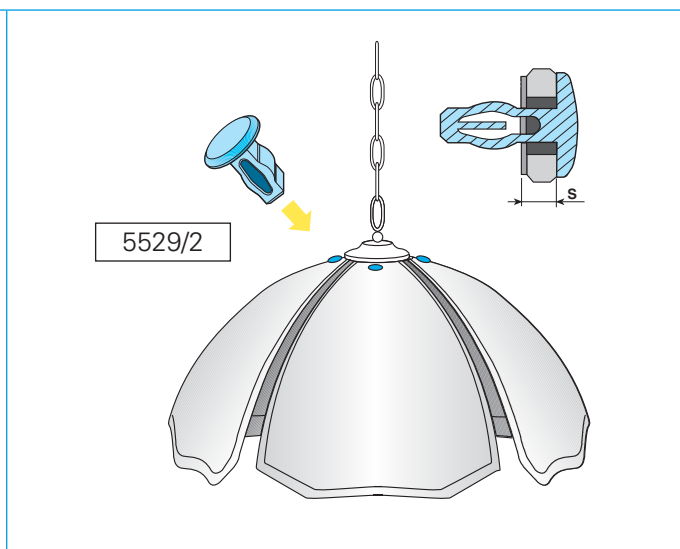
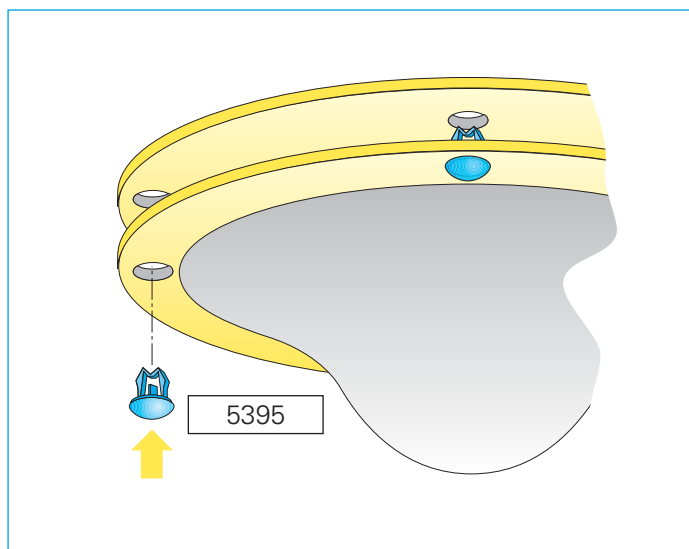
Materiale / Material

5 Nylon 66

Codice / Code	Dimensioni / Dimensions (mm)						Colore / Colour
	A	C	D	H	L	S	
5529/2	9	3	6	4,4	11,6	3,8-4,2	0 Neutro Natural Materiale / Material → 5

Esempio di utilizzazione

Application example

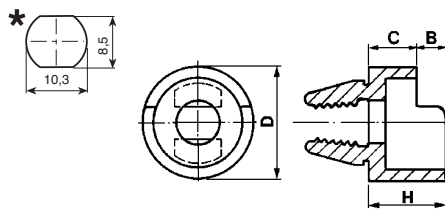


Accessori plafoniera

Accessories for ceiling fittings

Attacco rapido

Quick mount



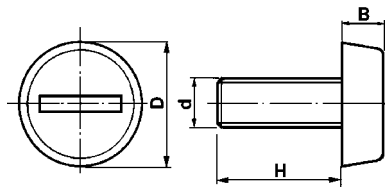
Materiale / Material
5 Nylon 66

Codice / Code	Dimensioni / Dimensions (mm)				Colore / Colour	
	D	B	C	H	1 Bianco White	2 Nero Black
5512/15	15	3	1,5	4,5	Materiale Material → 5	5
5512/40	15	6	4	10	5	
5512/70	15	3	7	10	5	5
5512/20/40	20	6	4	10		5

* Dima di foratura - Template

Vite

Screw

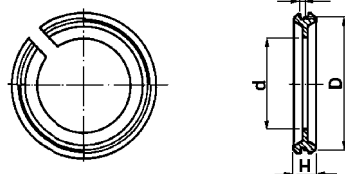


Materiale / Material
5 Nylon 66

Codice / Code	Dimensioni / Dimensions (mm)				Colore / Colour	
	D	d	B	H	1 Bianco White	2 Nero Black
5513/6/15	15	M 6x1	5	15	Materiale Material → 5	5
5513/6/20	15	M 6x1	5	20	5	
5513/20620	20	M 6x1	5	20	5	5

Anelli di riduzione

Adapters



Materiale / Material
6 Nylon 66 RV

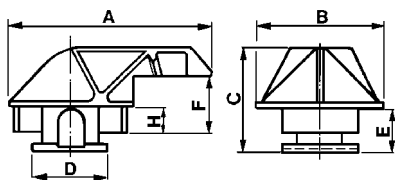
Codice / Code	Dimensioni / Dimensions (mm)				Colore / Colour	
	D	d	H	S	1 Bianco White	2 Nero Black
5319/42	42	29	7	1	Materiale Material → 6	6

L'anello va utilizzato per adattare paralumi previsti per portalampada E27 su portalampada E14
 To be used as an adaptor for shades mounted for E27 lampholders on E14 lampholder



Leve fissaggio plafoniera

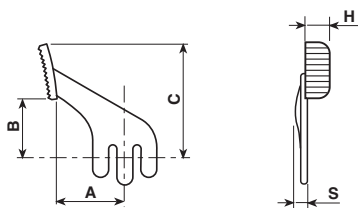
Locking level for ceiling fittings



Materiale / Material

6 Nylon 66 RV

Codice / Code	Dimensioni / Dimensions (mm)							Colore / Colour
	A	B	C	D	E	F	H	
5423	34	19,5	18	13	7,5	9,6	4	1 Bianco White Materiale / Material → 6



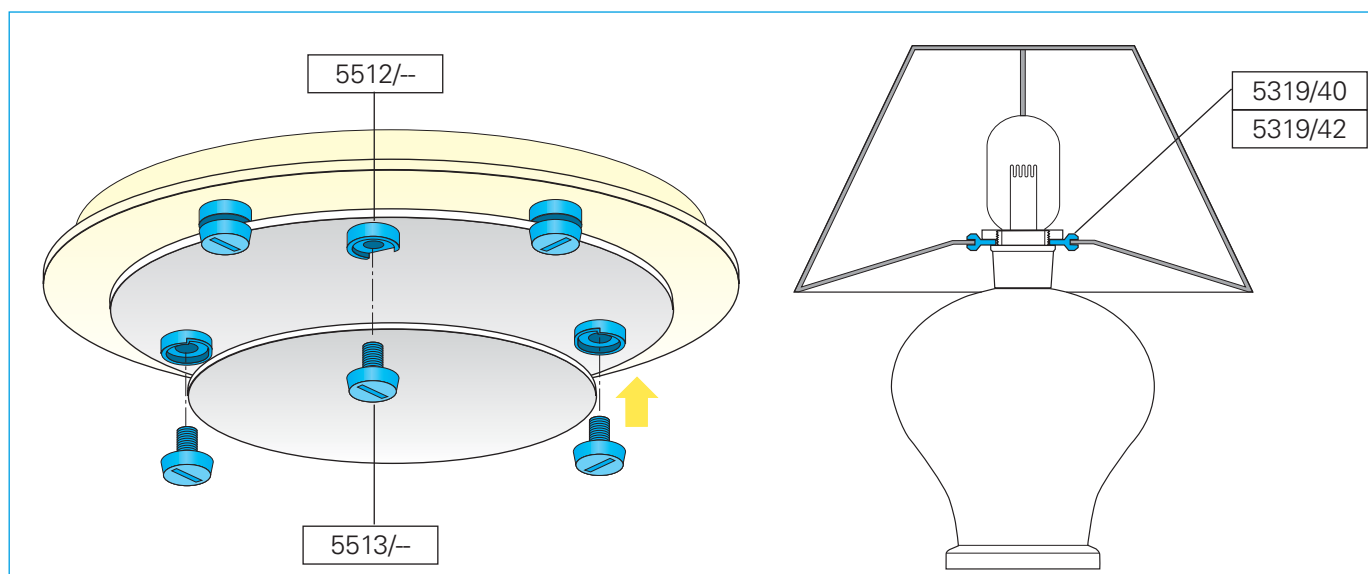
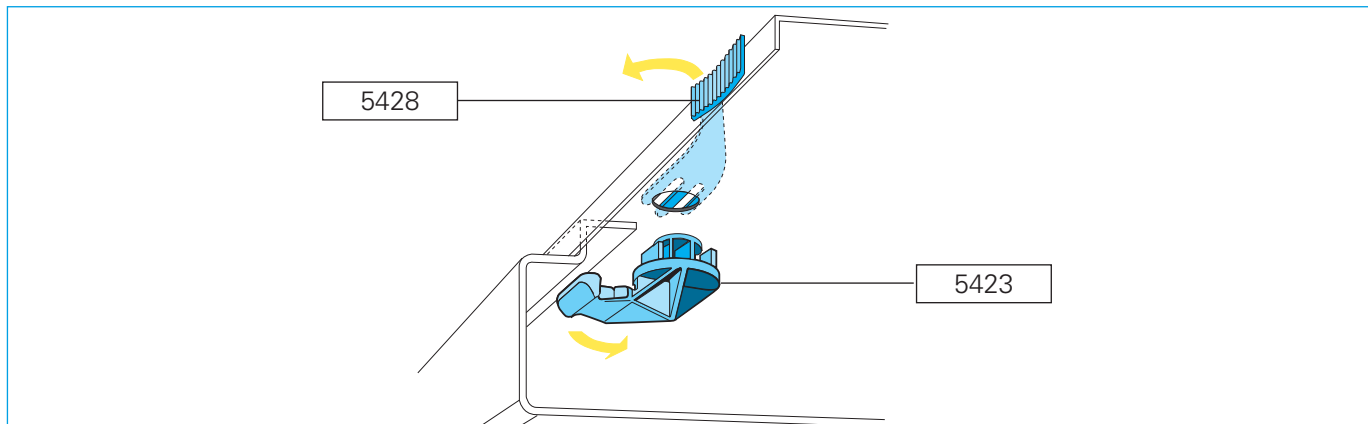
Materiale / Material

6 Nylon 66 RV

Codice / Code	Dimensioni / Dimensions (mm)					Colore / Colour
	A	B	C	H	S	
5428	24	21,5	40	7	3,5	1 Bianco White Materiale / Material → 6

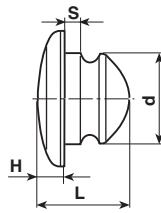
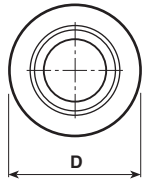
Esempi di utilizzazione

Application examples



Bottoni per paralume

Lampshade fasteners

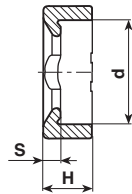
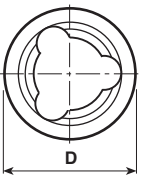


Materiale / Material

5 Nylon 66

11 Policarbonato

Codice / Code	Dimensioni / Dimensions (mm)					Colore / Colour		
	D	d	H	L	S	0 Neutro Natural	1 Bianco White	2 Nero Black
5544	9	6	1,8	6,2	1,1	Materiale Material → 11	5	5



Materiale / Material

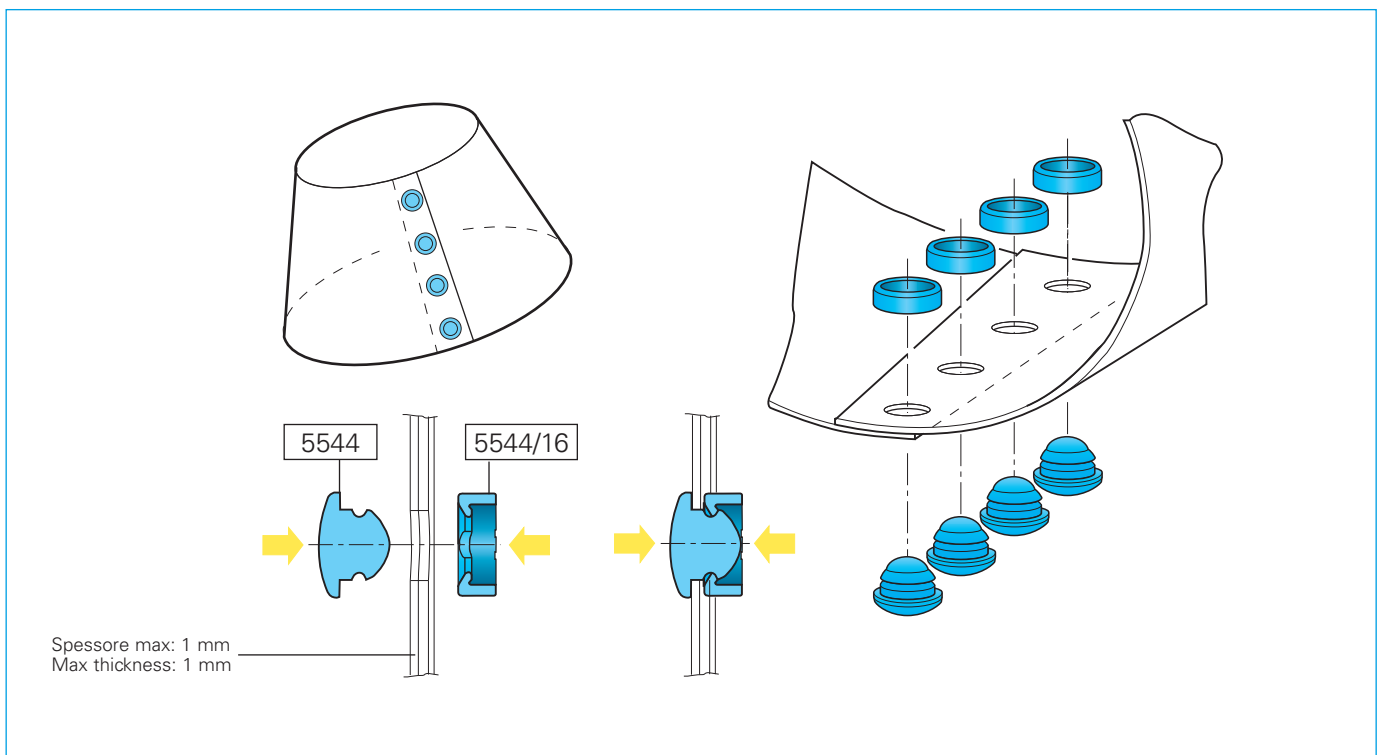
5 Nylon 66

11 Policarbonato

Codice / Code	Dimensioni / Dimensions (mm)				Colore / Colour		
	D	d	H	S	0 Neutro Natural	1 Bianco White	2 Nero Black
5544/16	9	7	3,3	1,2	Materiale Material → 11	5	5

Esempi di utilizzazione

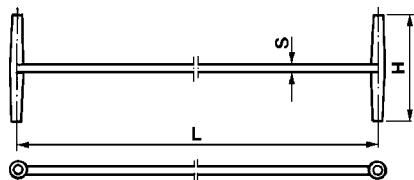
Application example





Accessori plafoniera

Accessories for ceiling fittings



Materiale / Material

5 Nylon 66

Codice / Code	Dimensioni / Dimensions (mm)			Colore / Colour
	L	H	S	
5193	100	16	1	5

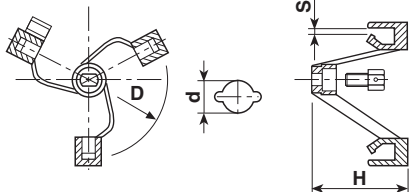
0 Neutro
Natural

Materiale
Material →

Foro di ancoraggio : Ø 3,5 mm Anchor hole : DIA. 3,5 mm
 Carico sopportato senza allungamento : 2 Kg Tolerated load without elongation : 2 Kgs
 Carico sopportato con allungamento : 6 Kg Tolerated load with elongation : 6 Kgs

Adattatori base lampada

Lamp base adapters



Materiale / Material

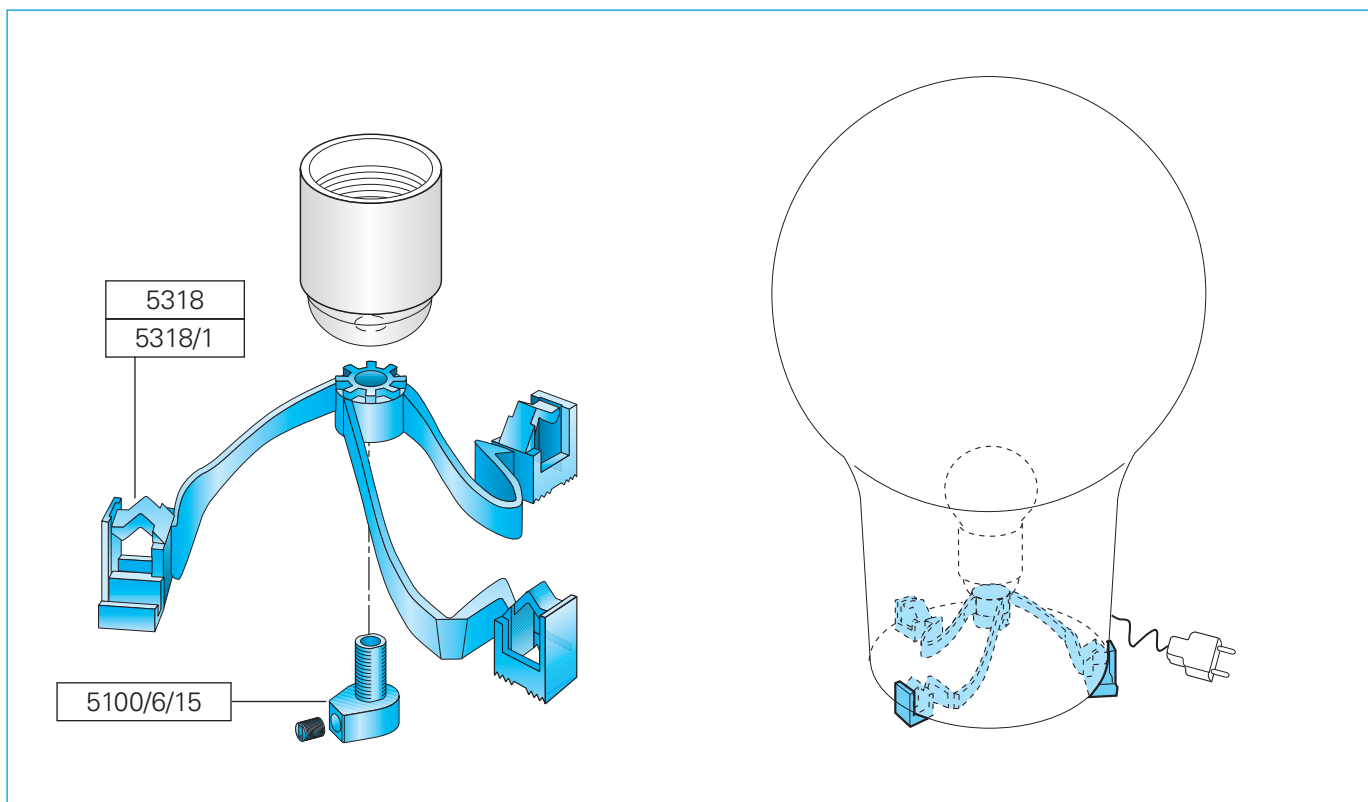
5 Nylon 66

Codice / Code	Dimensioni / Dimensions (mm)				Colore / Colour
	d	D	H	S	
5318/1	10,3	95÷108	60	6,5	1 Bianco White 2 Nero Black

Materiale
Material →

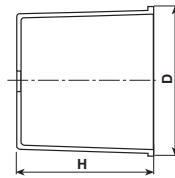
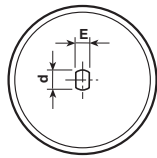
Esempio di utilizzazione

Application example



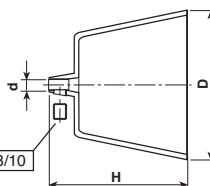
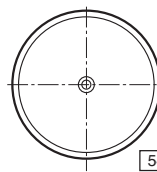
Rosoni

Ceiling cups



Materiale / Material
3 Polipropilene

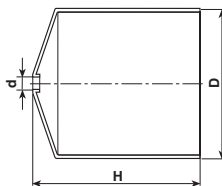
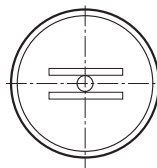
Codice / Code	Dimensioni / Dimensions (mm)				Colore / Colour	
	D	d	E	H	1 Nero Black	2 Nero Black
5911	75	10,3	8,5	70	Materiale Material → 3	



Materiale / Material
3 Polipropilene

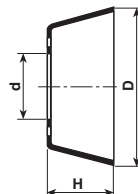
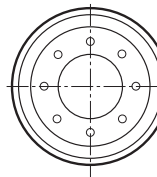
Codice / Code	Dimensioni / Dimensions (mm)				Colore / Colour	
	D	d	H	S	1 Bianco White	2 Nero Black
5912	92	6,7	85	15	Materiale Material → 3	3

Fornito con grano di bloccaggio M 7x1.
 Complete with M 7x1 locking grub screw.



Materiale / Material
6 Nylon 66 RV

Codice / Code	Dimensioni / Dimensions (mm)			Colore / Colour	
	D	d	H	1 Bianco White	2 Nero Black
5442	94	10,5	105	Materiale Material → 6	6



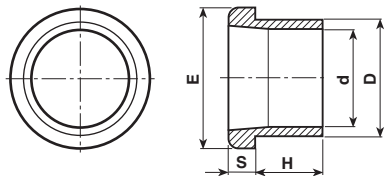
Materiale / Material
6 Nylon 66 RV
11 Policarbonato

Codice / Code	Dimensioni / Dimensions (mm)			Colore / Colour		
	D	d	H	0 Neutro Natural	1 Bianco White	2 Nero Black
5480/10	30	10,5	10,5	Materiale Material →	6	6
5480/13	31	10,5	13	11	6	6
5480/15/45	45	10,5	15		6	6



Anelli bloccarosoni

Rings for ceiling cups fasteners



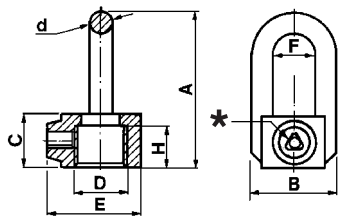
Materiale / Material

0 Polietilene

Codice / Code	Dimensioni / Dimensions (mm)					Colore / Colour		
	d	D	E	S	H	0 Neutro Natural	2 Nero Black	4 Oro Gold
5336/8	9,7	11,5	13,5	3	8	Materiale Material → 0	0	0
5348/8	12,7	14,5	16,5	3	8	0		

Ganci

Fasteners



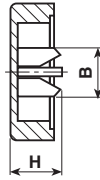
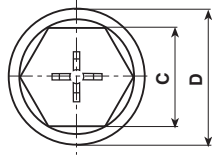
Materiale / Material

6 Nylon 66 RV

Codice / Code	Dimensioni / Dimensions (mm)								Colore / Colour	
	D	d	A	B	C	E	F	H	1 Bianco White	2 Nero Black
5918	M 10x1	4	30	16	10	17,5	8	8	Materiale Material → 6	6

* Foro per vite autofilettante 005337/29/65: Ø 2,2 mm - Carico max: 30 Kg
Hole for self-threading screw 005337/29/65: DIA 2,2 mm - Max load: 30 Kgs

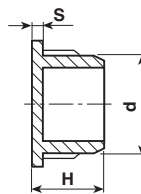
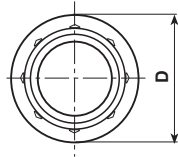
Tappi Plugs



Materiale / Material

5 Nylon 66

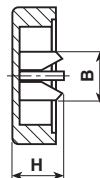
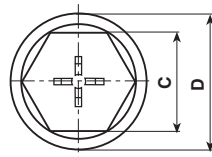
Codice / Code	Dimensioni / Dimensions (mm)				Colore / Colour		
	B	C	D	H	1 Bianco White	2 Nero Black	4 Oro Gold
5077/0	7	14	19	7	Materiale / Material → 5	5	5



Materiale / Material

0 Polietilene

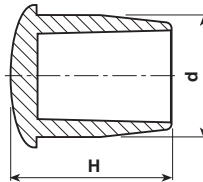
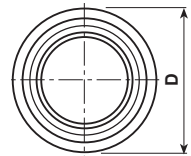
Codice / Code	Dimensioni / Dimensions (mm)				Colore / Colour		
	D	d	H	S	1 Bianco White	2 Nero Black	4 Oro Gold
5293	13,5	10,5	7,5	1,2	Materiale / Material → 0	0	0



Materiale / Material

5 Nylon 66
18 Polibutil RV-AE

Codice / Code	Dimensioni / Dimensions (mm)				Colore / Colour		
	C	D	d	H	1 Bianco White	2 Nero Black	4 Oro Gold
5077	14	19	10,5	6	Materiale / Material → 5 18	5 18	



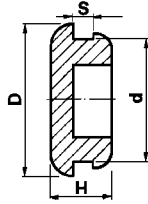
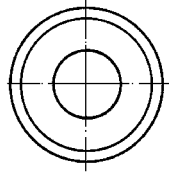
Materiale / Material

0 Polietilene
5 Nylon 66

Codice / Code	Dimensioni / Dimensions (mm)			Colore / Colour			
	D	d	H	0 Neutro Natural	1 Bianco White	2 Nero Black	4 Oro Gold
5313/8	8	6,2	9,5	Materiale / Material →	0	0 5	
5081	10	8	7	0	0	0 5	0
5453/13	13	10,8	14		0	0 5	
5453/16	16	13,5	18		0	0	
5453/16/18	18	14	13,5			5	
5453/18	18	15,5	20		0	0	



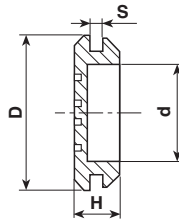
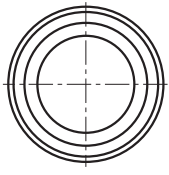
Tappi Plugs



Materiale / Material

1 PVC

Codice / Code	Dimensioni / Dimensions (mm)				Colore / Colour	
	D	d	H	S	1 Bianco White	2 Nero Black
6301/10	13	10	6	2	Materiale Material → 1	1

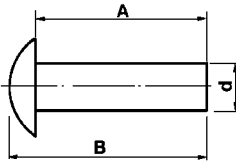
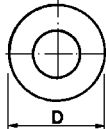


Materiale / Material

1 PVC

Codice / Code	Dimensioni / Dimensions (mm)				Colore / Colour	
	D	d	H	S	1 Bianco White	2 Nero Black
6303	25	14	7	2	Materiale Material → 1	1

Reggivetto Glass holders

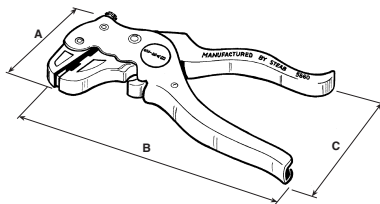


Materiale / Material

6 Nylon 66 RV

Codice / Code	Dimensioni / Dimensions (mm)				Colore / Colour		
	A	B	D	d	0 Neutro Natural	2 Nero Black	3 Rosso Red
5413/25	7	9	8	2,5	Materiale Material → 6	6	6
5413	14	16	8	4	6	6	

Pinze spelacavi per cavo piatto H03 UVH2F o unipolare Cable strippers suitable for flat cable H03 UVH2F or single pole



Materiale / Material

6 Nylon 66 RV

Codice / Code	Dimensioni / Dimensions (mm)			Colore / Colour	
	A	B	C	2 Nero Black	Materiale Material → 6
5860	70	170	80	6	

Elettronica Electronics



