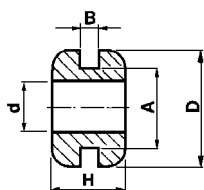
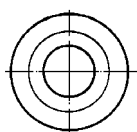




## Passacavi Grommets



Materiale / Material

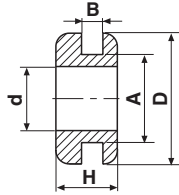
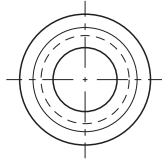
- 1 PVC
- 26 Elastomero  
Termoplastico  
TPE

Codice / Code	Dimensioni / Dimensions (mm)					Colore / Colour	
	A	B	D	d	H	1 Bianco White	2 Nero Black
6232/3	9	3,5	14	3	6,5	1	1
6236/3/5	6	2	10	3,5	6	1	1
6237/3/5	6	3	10	3,5	7	1	1
6236/4	6	2	10	4	6	1	1
6237/4	6	3	10	4	7	1	1
6236/4/5	6	2	10	4,5	6	1	1
6237/4/5	6	3	10	4,5	7	1	1
6236/5	6	2	10	5	6	1	1
6237/5	6	3	10	5	7	1	1
6221	8	2,5	12	5	7	1	1
6235/5	8	3,5	12	5	7,5	1	1
6233/5	10	2	14	5	8	1	1
6205/5	11	0,5	16	5	6	1	1
6202/5	11	1,5	15	5	7	1	1
6201	8	1	14	6	6	1	1
6235/6	8	3,5	12	6	7,5	1	1
6232/6	9	3,5	14	6	6,5	1	1
6233/6	10	2	14	6	8	1	1
6207	8,5	2,5	14	6	7	1	1
6205/6	11	0,5	16	6	6	1	1
6202/6	11	1,5	15	6	7,5	1	1
6203/6	12	1,5	17	6	7	1	1
6232/7	9	3,5	14	7	6,5	1	1
6208	10	1,5	16	7	7	1	1
6233/7	10	2	14	7	8	1	1
6205/7	11	0,5	16	7	6	1	1
6202/7	11	1,5	15	7	7,5	1	1
6203/7	12	1,5	17	7	7	1	1
6222	10	1,5	14,5	8	6	1	1
6223	10	6	15	8	12	1	1
6233/8	10	2	14	8	8	1	1
6206	11	1	14	8	6	1 26	1 26
6204/8	11,5	3	14,5	8	11	1	1
6203/8	12	1,5	17	8	7	1	1
6215/8	15	1,5	18,5	8	8	1	1
6234/8	15	2	20,5	8	7	1	1
6205/9	11	0,5	16	9	6	1	1
6204/9	11,5	3	14,5	9	11	1	1
6203/9	12	1,5	17	9	7	1	1
6204/10	11,5	3	14,5	10	11	1	1
6203/10	12	1,5	17	10	7	1	1
6220/10	13,5	2	17,5	10	7	1	1
6215/10	15	1,5	18,5	10	8	1	1
6215/11	15	1,5	18,5	11	8	1	1
6234/11	15	2	20,5	11	7	1	1
6215/12	15	1,5	18,5	12	8	1	1
6209/12	15	1,5	19	12	8	1	1
6234/12	15	2	20,5	12	7	1	1





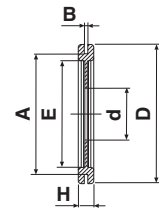
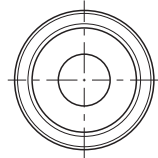
## Passacavi Grommets



**Materiale / Material**

- 1** PVC
- 23** Polipropilene  
Etilene  
Propilene

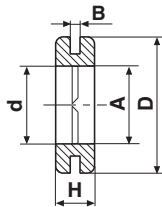
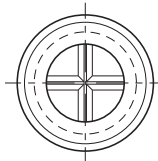
Codice / Code	Dimensioni / Dimensions (mm)					Colore / Colour	
	A	B	D	d	H	<b>1</b> Bianco White	<b>2</b> Nero Black
6238/12	18	2	23	12	8	<i>Materiale / Material</i> → <b>1</b>	<b>1</b>
6214/13	14	3	20	13	9	<b>1</b>	<b>1</b>
6215/13	15	1,5	18,5	13	8	<b>1</b>	<b>1</b>
6234/13	15	2	20,5	13	7	<b>1</b>	<b>1</b>
6238/13	18	2	23	13	8	<b>1</b>	<b>1</b>
6238/14	18	2	23	14	8	<b>1</b>	<b>1</b>
6238/16	18	2	23	16	8	<b>1</b>	<b>1</b>
6211/16	21	2	28	16	8	<b>1</b>	<b>1</b>
6225/20	24	2	32	19,5	8,5	<b>1</b>	<b>1</b>
6224/22	26	2	35	22	8,5	<b>1</b>	<b>1</b>
6259	16,5	4	24,5	12	11,5		<b>1</b>



**Materiale / Material**

- 1** PVC
- 23** Polipropilene  
Etilene  
Propilene

Codice / Code	Dimensioni / Dimensions (mm)						Colore / Colour	
	A	B	C	D	d	H	<b>2</b> Nero Black	
6260	58	2,3	66,5	18,5	47	9,5	<i>Materiale / Material</i> → <b>1</b>	<b>23</b>
6269	78	2,3	90	33,5	69	10	<b>1</b>	



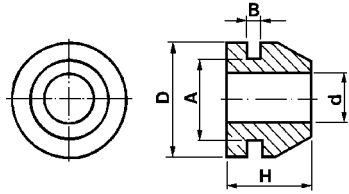
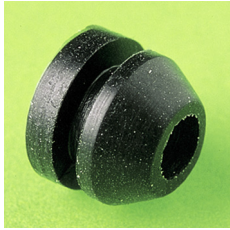
**Materiale / Material**

- 1** PVC

Codice / Code	Dimensioni / Dimensions (mm)					Colore / Colour	
	A	B	D	d	H	<b>2</b> Nero Black	
6228	21	2	28	16	8	<i>Materiale / Material</i> → <b>1</b>	



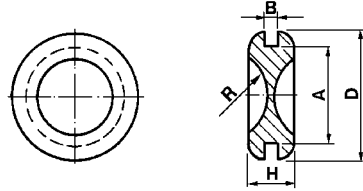
## Passacavi Grommets



Materiale / Material

1 PVC

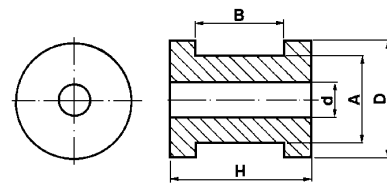
Codice / Code	Dimensioni / Dimensions (mm)					Colore / Colour	
	A	B	D	d	H	1 Bianco White	2 Nero Black
6239/3/5	6	1	9,5	3,5	7	Materiale / Material → 1	1
6258/5	7	2	11	5	9	1	1
6258/6/5	11	2	13,5	7	9	1	1



Materiale / Material

1 PVC

Codice / Code	Dimensioni / Dimensions (mm)					Colore / Colour	
	A	B	D	H	R	1 Bianco White	2 Nero Black
6254	18	2	23	8	9	Materiale / Material → 1	1
6213/0/16	21	2	28	8	8	1	1



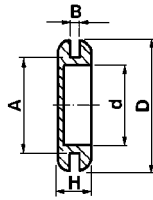
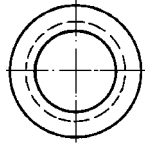
Materiale / Material

1 PVC

Codice / Code	Dimensioni / Dimensions (mm)					Colore / Colour	
	A	B	D	d	H	2 Nero Black	1 Bianco White
6227/14	18	2	24	14	7,5	Materiale / Material → 1	2



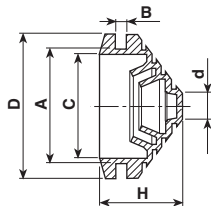
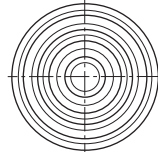
## Passacavi Grommets



Materiale / Material

1 PVC

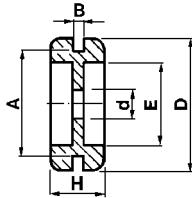
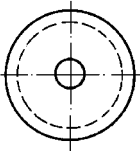
Codice / Code	Dimensioni / Dimensions (mm)					Colore / Colour	
	A	B	D	d	H	1 Bianco White	2 Nero Black
6203/6/0	12	1,5	17	6	7	Materiale Material → 1	1
6227/13/0	18	2	24	13	7,5	1	1
6238/16/0	18	2	23	16	8	1	1



Materiale / Material

1 PVC

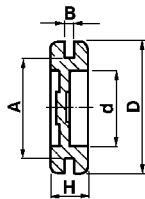
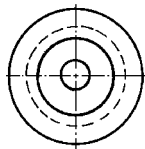
Codice / Code	Dimensioni / Dimensions (mm)						Colore / Colour	
	A	B	C	D	d	H	1 Bianco White	2 Nero Black
6240/5/19	21	2	19	26	5	15	Materiale Material → 1	1
6240/5/28	32	5	28	37	5	15	1	1



Materiale / Material

1 PVC

Codice / Code	Dimensioni / Dimensions (mm)						Colore / Colour	
	A	B	D	d	E	H	1 Bianco White	2 Nero Black
6209/4	15	1,5	19	4	12	8	Materiale Material →	1
6209/4/4	15	4	19	4	12	10,5	1	1
6211/6/5	21	2	28	6,5	16	8		1



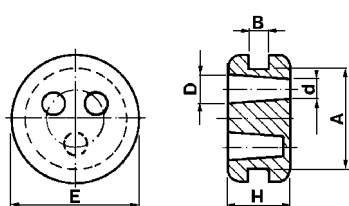
Materiale / Material

1 PVC

Codice / Code	Dimensioni / Dimensions (mm)					Colore / Colour	
	A	B	D	d	H	1 Bianco White	2 Nero Black
6207/0	8,5	2,5	14	6	7	Materiale Material → 1	1
6209/0	15	1,5	19	12	8	1	1



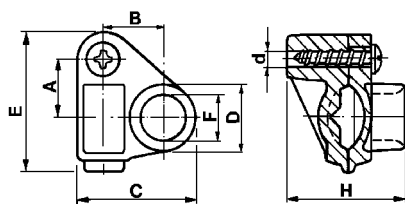
## Passacavi Grommets



Materiale / Material  
1 PVC

Codice / Code	Dimensioni / Dimensions (mm)							Fori chiusi Dead holes	Materiale / Material	Colore / Colour
	A	B	D	d	E	H				
6307/0/1	10	2	3	2	13	6	1	1	2 Nero Black	
6307/0/2	10	2	3	2	13	6	2	1		
6307/0/3	10	2	3	0	13	6	3	1		

## Bloccacavi Cable clamps



Materiale / Material  Approvati per l'utilizzo in Classe II  
5 Nylon 66  Approved for Classe II fittings

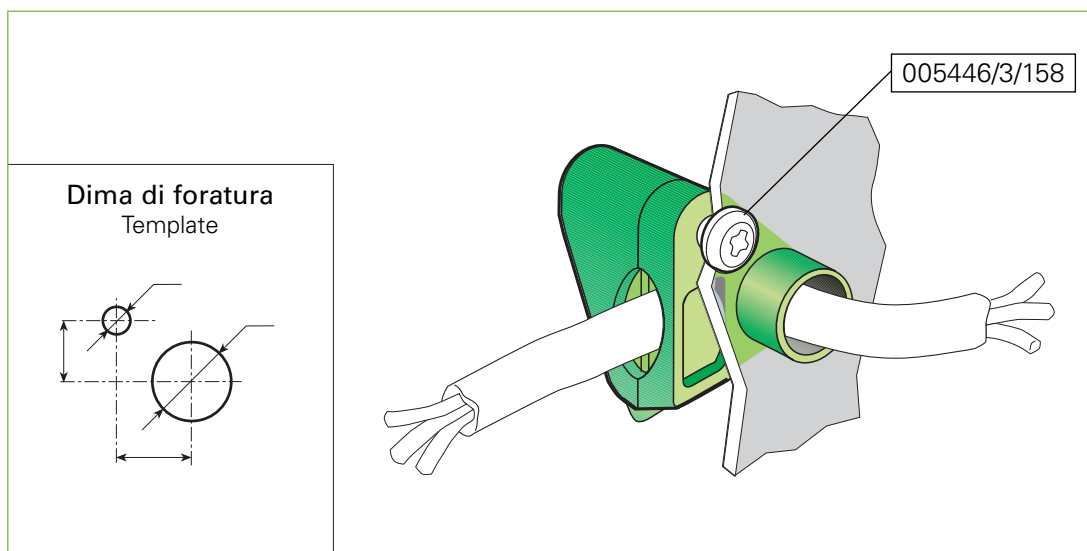
Codice / Code	Dimensioni / Dimensions (mm)									Materiale / Material	Colore / Colour		Omologato Certified
	A	B	D1	d1	C	D	d	E	F		H	1 Bianco White	
5463/7	9,5	9,5	11	4,2	18,5	10,5	3,5	21,7	7,2	18	5	5	<input checked="" type="checkbox"/> C.S. N°EH 229

I bloccacavi vengono forniti con vite autofilettante separata.  
Per cavi: H03VV-F Ø min 4,8 - Ø max 6,5

Cable clamps are supplied with separate self-threading screw.  
For cables: H03VV-F Ø min 4,8 - Ø max 6,5

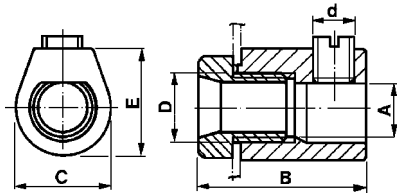
## Esempio di utilizzazione

Application example





## Bloccacavi Cable clamps



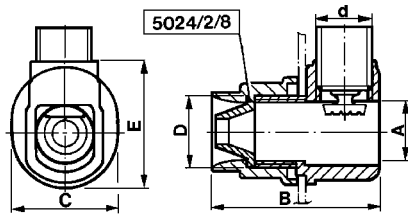
**Materiale / Material**  
**6** Nylon 66 RV  
**18** Polibutil R/AE

Approvati per l'utilizzo in **Classe I**  
 Approved for **Classe I** fittings

Codice / Code	Dimensioni / Dimensions (mm)							Colore / Colour		Omologato Certified
	A	B	C	D	d	E	T	1 Bianco White	2 Nero Black	
5465/8	4x6	19	12	M 8x1	M 6x1	12	8	Materiale Material → <b>6</b>	<b>6</b>	
5020	5,6	20,5	14,5	M 10x1	M 7x1	14,5	15		<b>6</b>	
5020/7	7	21	13,5	M 10x1	M 7x1	16	15	<b>6</b>	<b>6</b>	<input checked="" type="checkbox"/> C.S. N°EH 228
5126	9,5	31	18,5	M 13x1	M 8x1,25	20	15	<b>6</b>	<b>6 18</b>	<input checked="" type="checkbox"/> C.S. N°EH 228

**M 8x1:** Coppia serraggio max = 90 N cm - **M 10x1:** Coppia serraggio max = 130 N cm - **M 13x1:** Coppia serraggio max = 150 N cm  
 I bloccacavi vengono forniti con grano filettato separato. - T = Kg carico strappo conduttore.  
 Articolo 5020/7: per cavi H03VV-F Ø min 4,8 - Ø max 6,5 e H03VVH2-F sez. min 3x4,8 - sez. max 3,9x6,4  
 Articolo 5126: per cavo H03VV-F/H05VV-F Ø min 8 - Ø max 9,5

**M 8x1:** Max tightening torque = 90 N cm - **M 10x1:** Max tightening torque = 130 N cm - **M 13x1:** Max tightening torque = 150 N cm  
 Cable clamps are supplied with separate threaded grub. - T = Lead bearable load Kgs.  
 Article 5020/7: for cables H03VV-F Ø min 4,8 - Ø max 6,5 and H03VVH2-F sect. min 3x4,8 - sect. max 3,9x6,4  
 Article 5126: for cable H03VV-F/H05VV-F Ø min 8 - Ø max 9,5



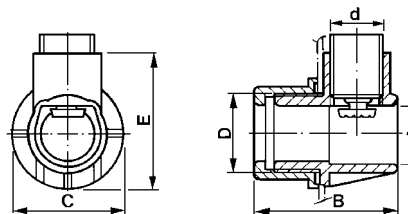
**Materiale / Material**  
**6** Nylon 66 RV

Approvati per l'utilizzo in **Classe II**  
 Approved for **Classe II** fittings

Codice / Code	Dimensioni / Dimensions (mm)							Colore / Colour		Omologato Certified
	A	B	C	D	d	E	T	1 Bianco White	2 Nero Black	
5346/2/09	9,5	29	21	M 13x1	M 8x1,25	22	20	Materiale Material → <b>6</b>	<b>6</b>	
5024/28/15	14,8	41	27	M 18x1,5	M 14x1	22	30	<b>6</b>	<b>6</b>	
5024/2/15	14,8	41	27	M 18x1,5	M 14x1,5	30,5	30	<b>6</b>	<b>6</b>	<input checked="" type="checkbox"/> C.S. N°EH 229

**M 13x1:** Coppia serraggio max = 150 N cm - **M 18x1,5:** Coppia serraggio max = 450 N cm  
 I bloccacavi vengono forniti con grano filettato separato. - T = Kg carico strappo conduttore.  
 Articolo 5346/2/09: per cavi H03VV-F/H05VV-F Ø min 4,8 - Ø max 9 e H03VVH2/H05VVH2-F sez. min 3x4,8 - sez. max 5x7,2  
 Articolo 5024/2/15: per cavi H03VV-F/H05VV-F Ø min 4,8 - Ø max 14 e H03VVH2/H05VVH2-F sez. min 3,2x5,2 - sez. max 5,2x7,6

**M 13x1:** Max tightening torque = 150 N cm - **M 18x1,5:** Max tightening torque = 450 N cm  
 Cable clamps are supplied with separate threaded grub. - T = Lead bearable load Kgs.  
 Article 5346/2/09: for cables H03VV-F/H05VV-F Ø min 4,8 - Ø max 9 and H03VVH2/H05VVH2-F sect. min 3x4,8 - sect. max 5x7,2  
 Article 5024/2/15: for cables H03VV-F/H05VV-F Ø min 4,8 - Ø max 14 and H03VVH2/H05VVH2-F sect. min 3,2x5,2 - sect. max 5,2x7,6



**Materiale / Material**  
**6** Nylon 66 RV

Approvati per l'utilizzo in **Classe II**  
 Approved for **Classe II** fittings

Codice / Code	Dimensioni / Dimensions (mm)							Colore / Colour		Omologato Certified
	A	B	C	D	d	E	T	2 Nero Black	6	
5030	20	54	42	M 30x2	M 20x1,5	58	120	Materiale Material → <b>6</b>	<b>6</b>	<input checked="" type="checkbox"/> C.S. N°EH 229

**M 30x2:** Coppia serraggio max = 500 N cm  
 I bloccacavi vengono forniti con grano filettato separato. - T = Kg carico strappo conduttore.  
 Per cavi: H03VV-F/H05VV-F Ø min 4,8 - Ø max 18 e H03VVH2/H05VVH2-F sez. min 3,2x5,2 - sez. max 5,2x7,6

**M 30x2:** Max tightening torque = 500 N cm  
 Cable clamps are supplied with separate threaded grub. - T = Lead bearable load Kgs.  
 For cables: H03VV-F/H05VV-F Ø min 4,8 - Ø max 18 and H03VVH2/H05VVH2-F sect. min 3,2x5,2 - sect. max 5,2x7,6



## Esempi di utilizzazione

Application examples

**Dima di foratura**  
Template

5465/8

5020

5020/7

5126

5024/2/15

5346/2/09

5024/2/8

5030

5465/8

5020

5020/7

5126

5024/2/15

5346/2/09

5024/2/8

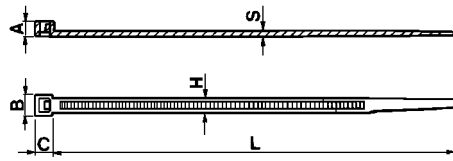
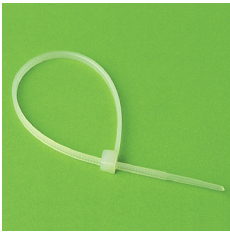
5030





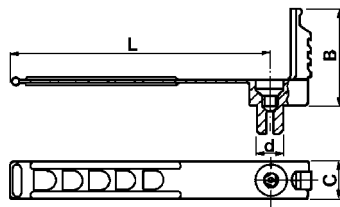
## Fascette

### Adjustable straps



Materiale / Material  
**5** Nylon 66

Codice / Code	Dimensioni / Dimensions (mm)						Colore / Colour		
	A	B	C	H	L	S	0 Neutro Natural	2 Nero Black	
5380/75	3,2	5	4,2	2,7	75	1	Materiale Material → <b>5</b>	<b>5</b>	
5380/100	3,2	5	4,2	2,7	100	1	<b>5</b>	<b>5</b>	
5380/125	3,2	5	4,2	2,7	125	1	<b>5</b>	<b>5</b>	
5380/160	3,2	5	4,2	2,7	160	1	<b>5</b>		
5380/200	4,3	6	6	3,6	200	1,3	<b>5</b>		
5380/290	4,3	6	6	3,6	290	1,3	<b>5</b>	<b>5</b>	
5380/370	4,3	6	6	3,6	370	1,3	<b>5</b>		



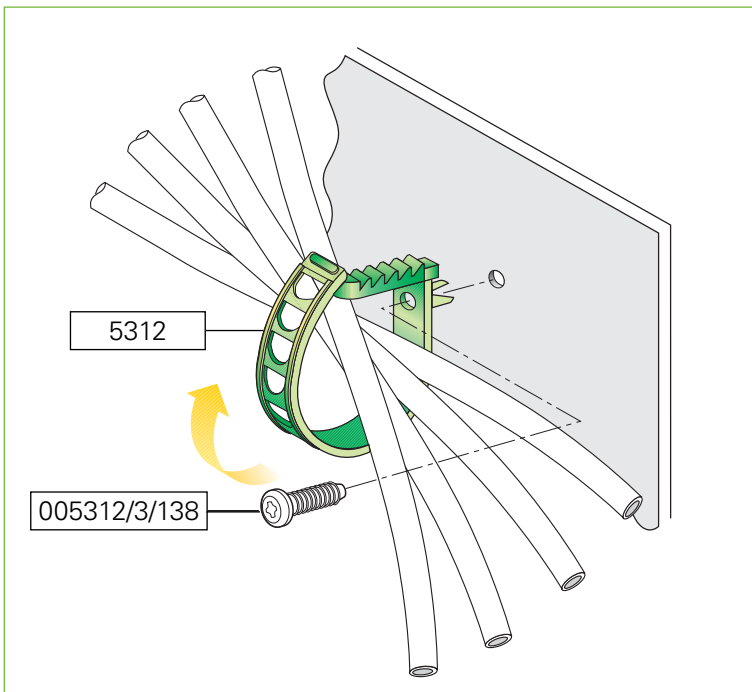
Materiale / Material  
**5** Nylon 66

Codice / Code	Dimensioni / Dimensions (mm)				Colore / Colour		
	B	d	C	L	0 Neutro Natural	1 Bianco White	2 Nero Black
5312	23	6	8	62	Materiale Material → <b>5</b>	<b>5</b>	<b>5</b>

Foro ancoraggio: Ø 6 mm - Le fascette vengono fornite con vite autofilettante separata.  
 Anchor hole: Ø 6 mm - Adjustable straps are supplied with separate self-threading screw.

## Esempio di utilizzazione

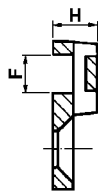
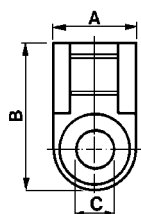
### Application example





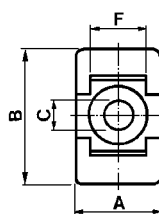


## Reggifascette Strap holders



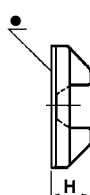
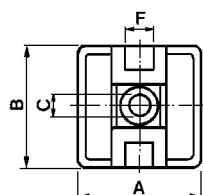
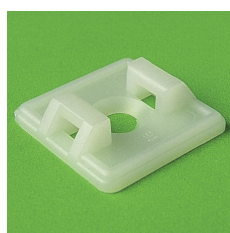
Materiale / Material  
5 Nylon 66

Codice / Code	Dimensioni / Dimensions (mm)					Colore / Colour	
	A	B	C	F	H	0	Neutro Natural
5506	10	20	4,3	5	6	Materiale / Material →	5



Materiale / Material  
5 Nylon 66

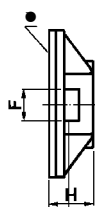
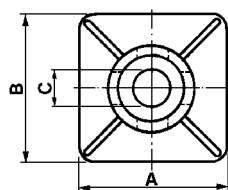
Codice / Code	Dimensioni / Dimensions (mm)					Colore / Colour	
	A	B	C	F	H	2	Nero Black
5507	15	22,5	5	9	11	Materiale / Material →	5



Materiale / Material  
2 ABS  
5 Nylon 66

Codice / Code	Dimensioni / Dimensions (mm)					Colore / Colour		Note / Notes
	A	B	C	F	H	1	Bianco White	
5508/19	19	19	4,3	4	6	Materiale / Material →	2 5	
5508/19/A	19	19	4,3	4	6		5	•
5508/26/A	26,5	26,5	4,3	6	8		2 5	•

• Con adesivo - With adhesive



Materiale / Material  
2 ABS  
5 Nylon 66

Codice / Code	Dimensioni / Dimensions (mm)					Colore / Colour		Note / Notes	
	A	B	C	F	H	1	Bianco White		2
5509/19	19	19	4,3	4	6	Materiale / Material →	2	5	
5509/26	26,5	26,5	4,3	6	7,3		2		
5509/19/A	19	19	4,3	4	6		2	5	•
5509/26/A	26,5	26,5	4,3	6	7,3		2	5	•

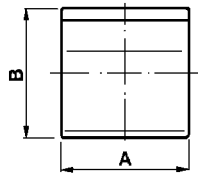
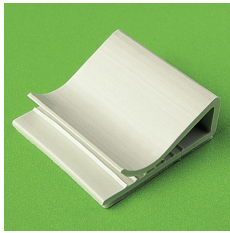
• Con adesivo - With adhesive





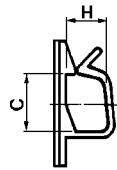
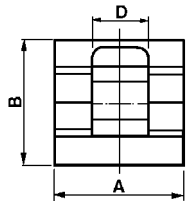
## Supporti autoadesivi per conduttore

### Self-adhesive cable supports



Materiale / Material  
**1** PVC

Codice / Code	Dimensioni / Dimensions (mm)			Colore / Colour	
	A	B	C	1 Bianco White	
5510/20	20	26	6,5	Materiale / Material → <b>1</b>	
5510/25	25	26	6,5	<b>1</b>	
5510/30	30	26	6,5	<b>1</b>	

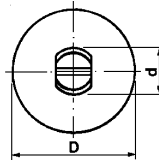
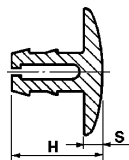


Materiale / Material  
**5** Nylon 66

Codice / Code	Dimensioni / Dimensions (mm)					Colore / Colour	
	A	B	C	D	H	0 Neutro Natural	2 Nero Black
5511/10	19	19	4,5	10	5	Materiale / Material → <b>5</b>	<b>5</b>
5511/12	26	26	11	12,5	8	<b>5</b>	
5511/16	26	26	18	16	15	<b>5</b>	

## Tappi schede

### Board caps



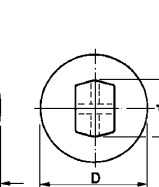
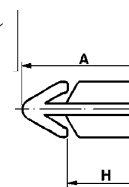
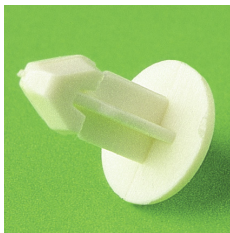
Materiale / Material  
**5** Nylon 66

Codice / Code	Dimensioni / Dimensions (mm)					Colore / Colour		
	D	d	H	S	F	1 Bianco White	2 Nero Black	8 Grigio Grey
5470	14	5	10	2	4,5	Materiale / Material → <b>5</b>	<b>5</b>	<b>5</b>

\* Dima di foratura - Template

## Bottoni bloccaggio

### Locking pins



Materiale / Material  
**5** Nylon 66

Codice / Code	Dimensioni / Dimensions (mm)						Colore / Colour	
	A	D	d	F	H	S	1 Bianco White	
5487/18	7,2	11	5,5	5,2	1,8	2	Materiale / Material → <b>5</b>	
5487/76	12	11	5,5	5,2	7,6	2	<b>5</b>	

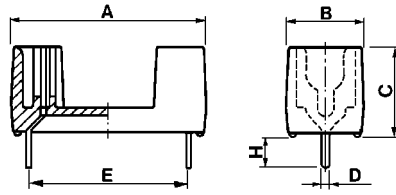
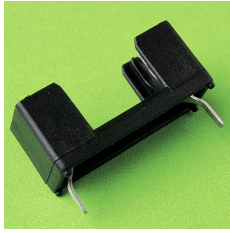
\* Dima di foratura - Template





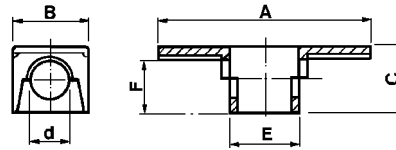
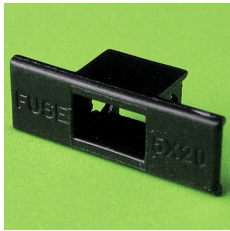
## Porta fusibili

### Fuse holders



Materiale / Material  
 21 Nylon 66 RV-AE

Codice/Code	Dimensioni / Dimensions (mm)						Colore / Colour
	A	B	C	D	E	H	
5365	24,5	9,5	11	1	17,8	5	2 Nero Black
5365/22	24,5	9,5	11	1	22,4	4	21

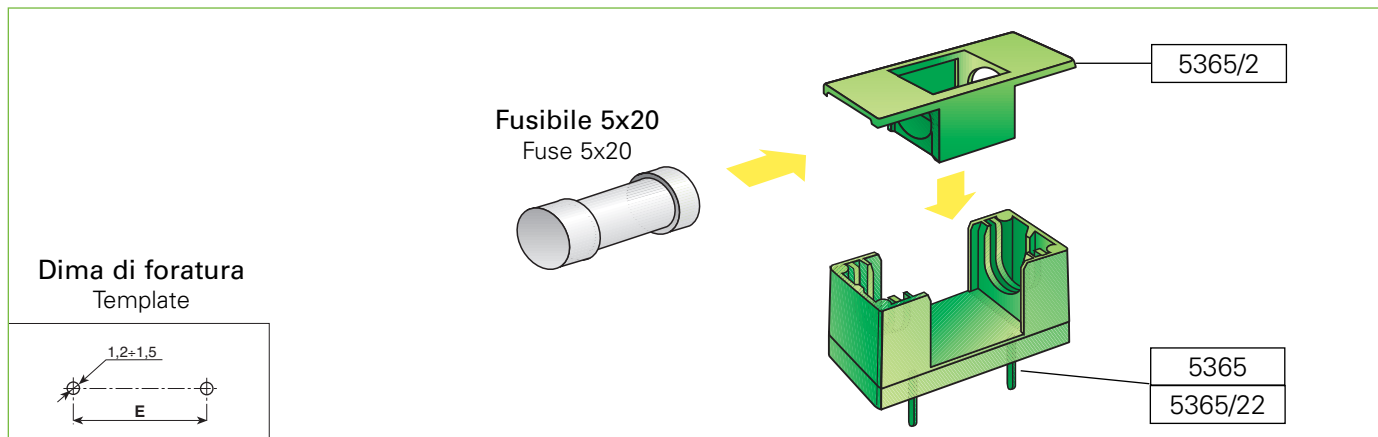


Materiale / Material  
 21 Nylon 66 RV-AE

Codice/Code	Dimensioni / Dimensions (mm)						Colore / Colour
	A	B	C	d	E	F	
5365/2	26,5	9,5	9	5	10,5	7	2 Nero Black
							21

## Esempio di utilizzazione

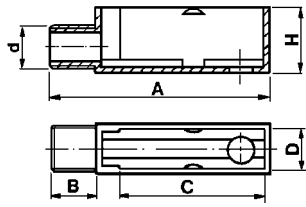
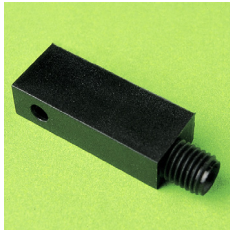
### Application example





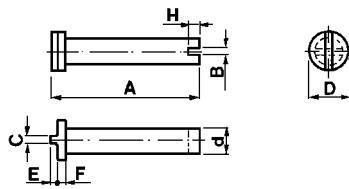
## Supporti M.G.

Trimmer protection boxes



Materiale / Material  
**6** Nylon 66 RV

Codice / Code	Dimensioni / Dimensions (mm)						Materiale / Material	Colore / Colour
	A	B	C	D	d	H		
5356	29	6	19,5	5	M 6x0,75	9,3	<b>6</b>	<b>2</b> Nero Black

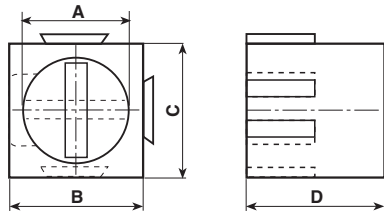


Materiale / Material  
**9** Acetalica

Codice / Code	Dimensioni / Dimensions (mm)								Materiale / Material	Colore / Colour
	A	B	C	D	d	E	F	H		
5362/8	8	0,7	0,6	4,5	3	0,8	0,7	1,5	<b>9</b>	<b>3</b> Rosso Red
5362/13	13	0,7	0,6	4,5	3	0,8	0,7	1,5	<b>9</b>	
5362/18	18	0,7	0,6	4,5	3	0,8	0,7	1,5	<b>9</b>	

## Supporti L.E.D. modulari

Modular L.E.D. supports

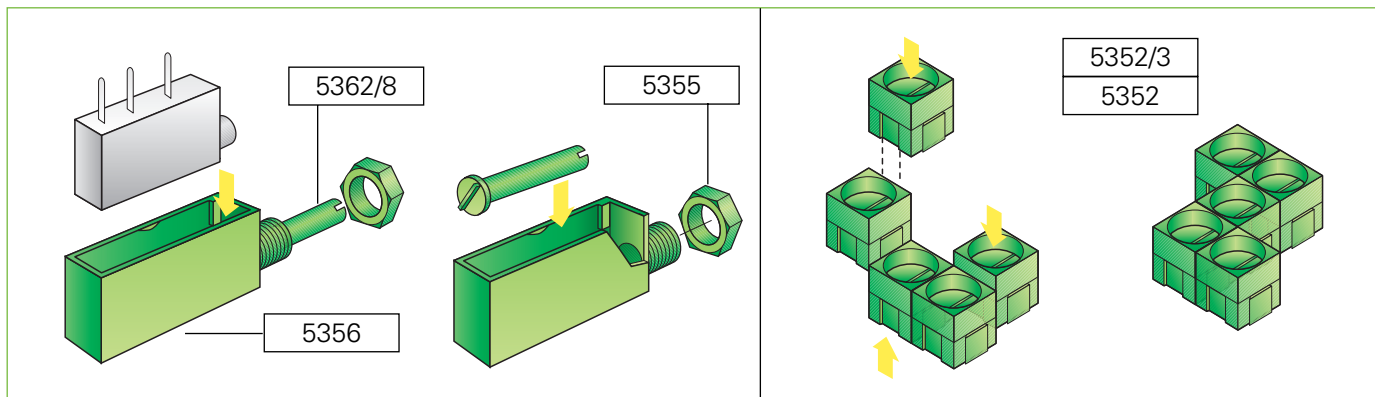


Materiale / Material  
**6** Nylon 66 RV

Codice / Code	Dimensioni / Dimensions (mm)				Materiale / Material	Colore / Colour
	A	B	C	D		
5352/3	3	7,6	7,6	8	<b>6</b>	<b>2</b> Nero Black
5352	6	7,6	7,6	8	<b>6</b>	

## Esempio di utilizzazione

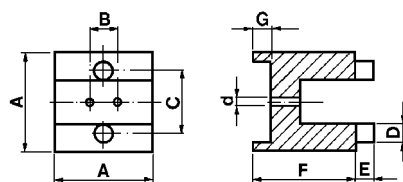
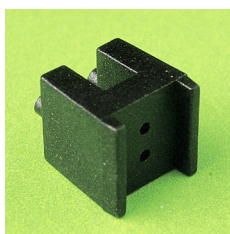
Application example





## Supporti per L.E.D. rettangolare

Supports for rectangular L.E.D.



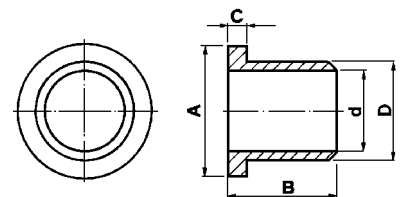
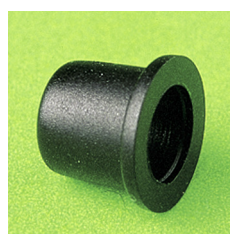
Materiale / Material

**6** Nylon 66 RV

Codice / Code	Dimensioni / Dimensions (mm)								Colore / Colour	
	A	B	C	D	d	E	F	G	<b>2</b> Nero Black	<b>6</b>
5253	8	2,54	5,08	1,57	0,8	1,5	8,5	1,5	Materiale Material →	<b>6</b>

## Supporti per L.E.D. cilindrico a testa sferica

Supports for cylindrical round head L.E.D.

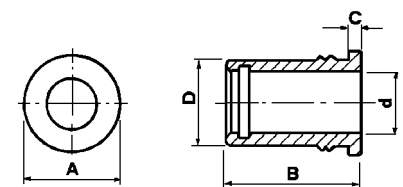


Materiale / Material

**0** Polietilene

**5** Nylon 66

Codice / Code	Dimensioni / Dimensions (mm)					Colore / Colour		
	A	B	C	D	d	<b>0</b> Neutro Natural	<b>2</b> Nero Black	<b>5</b>
5284/5	8	6,5	1	6	5	Materiale Material →	<b>5</b>	<b>0</b>



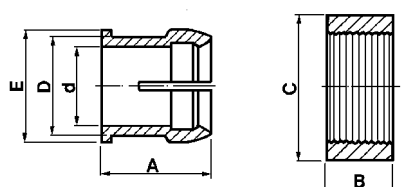
Materiale / Material

**6** Nylon 66 RV

Codice / Code	Dimensioni / Dimensions (mm)					Colore / Colour	
	A	B	C	D	d	<b>2</b> Nero Black	<b>6</b>
5361/8	8,5	12	1	7	5	Materiale Material →	<b>6</b>

## Supporti per L.E.D. a testa sferica

Supports for round head L.E.D.



Materiale / Material

**5** Nylon 66

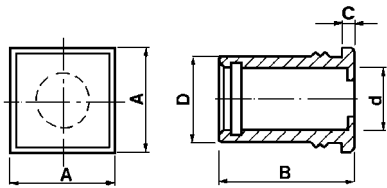
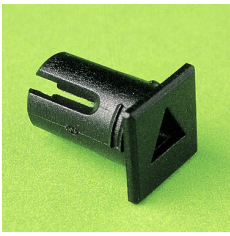
Codice / Code	Dimensioni / Dimensions (mm)						Colore / Colour	
	A	B	C	D	d	E	<b>2</b> Nero Black	<b>5</b>
5212/50	6,7	4,19	9,3	6,3	5,1	7,7	Materiale Material →	<b>5</b>





## Supporti per L.E.D. cilindrico a testa piana

### Supports cylindrical flat head L.E.D.

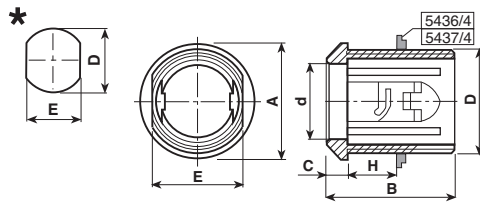


Materiale / Material  
**6** Nylon 66 RV

Codice / Code	Dimensioni / Dimensions (mm)					Colore / Colour	Profilo Profile
	A	B	C	D	d		
						<b>2</b> Nero Black	
5361/1	8,5	12	1	7	5	Materiale / Material → <b>6</b>	←
5361/2	8,5	12	1	7	5	<b>6</b>	□
5361/3	8,5	12	1	7	5	<b>6</b>	⊥
5361/4	8,5	12	1	7	5	<b>6</b>	○
5361/5	8,5	12	1	7	5	<b>6</b>	⊓
5361/6	8,5	12	1	7	5	<b>6</b>	+
5361/7	8,5	12	1	7	5	<b>6</b>	▽

## Supporti per L.E.D.

### L.E.D. supports

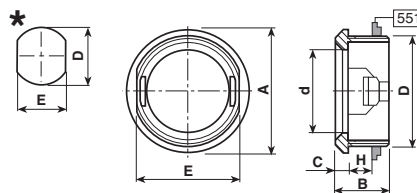


Materiale / Material  
**6** Nylon 66 RV

Codice / Code	Dimensioni / Dimensions (mm)							Colore / Colour	Profilo Profile
	A	B	C	D	d	E	H		
								<b>2</b> Nero Black	
5439/08/2/4	14	14,6	2,6	M12x1	8,2	10,5	0,5÷8	Materiale / Material → <b>6</b>	⊓
5439/08/3/4	14	14,6	2,6	M12x1	8,2	10,5	0,5÷8	<b>6</b>	⊓
5439/10/1/4	16	18	3	M14x1	10,2	12,5	0,5÷8	<b>6</b>	⊓
5439/10/2/4	16	18	3	M14x1	10,2	12,5	0,5÷8	<b>6</b>	⊓
5439/10/3/4	16	18	3	M14x1	10,2	12,5	0,5÷8	<b>6</b>	⊓

\* Dima di foratura - Forniti completi di dado di fissaggio.  
 M 27x1: Coppia di serraggio max: 130 N cm

\* Template - Supplied with retaining nut.  
 M 27x1: Max tightening torque: 130 N cm



Materiale / Material  
**6** Nylon 66 RV

Codice / Code	Dimensioni / Dimensions (mm)							Colore / Colour
	A	B	C	D	d	E	H	
								<b>2</b> Nero Black
5477/20/6	30	13	3	M27x1	19,9	25	0,5÷5	Materiale / Material → <b>6</b>

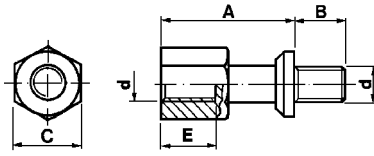
\* Dima di foratura - Forniti completi di dado di fissaggio.  
 M 27x1: Coppia di serraggio max: 130 N cm

\* Template - Supplied with retaining nut.  
 M 27x1: Max tightening torque: 130 N cm





## Supporti P.C.B. P.C.B. supports



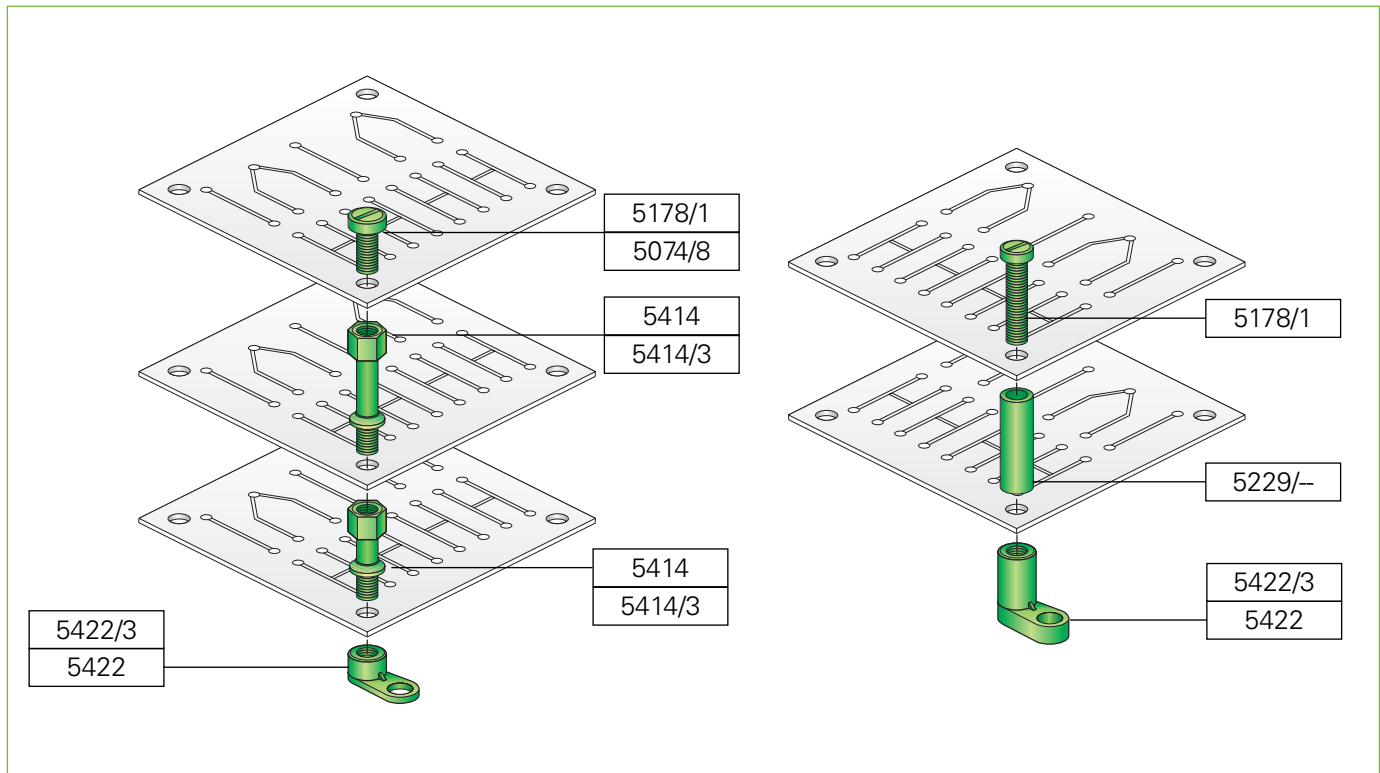
Materiale / Material  
6 Nylon 66 RV

Codice / Code	Dimensioni / Dimensions (mm)					Materiale / Material	Colore / Colour
	A	B	C	d	E		
5414/3/10	10	5	5,5	M 3x0,5	5,5	6	6
5414/3/15	15	5	5,5	M 3x0,5	5,5	6	6
5414/3/20	20	5	5,5	M 3x0,5	5,5	6	6
5414/3/25	25	5	5,5	M 3x0,5	5,5	6	6
5414/3/30	30	5	5,5	M 3x0,5	5,5	6	6
5414/10	10	6	7	M 4x0,7	6,5	6	6
5414/10/9	10	9	7	M 4x0,7	6,5	6	6
5414/15	15	6	7	M 4x0,7	6,5	6	6
5414/20	20	6	7	M 4x0,7	6,5	6	6
5414/25	25	6	7	M 4x0,7	6,5	6	6
5414/30	30	6	7	M 4x0,7	6,5	6	6

M 3x0,5: Coppia di serraggio max 15 N cm - M 4x0,7: Coppia di serraggio max: 25 N cm  
M 3x0,5: Max tightening torque: 15 N cm - M 4x0,7: Max tightening torque: 25 N cm

## Esempio di utilizzazione

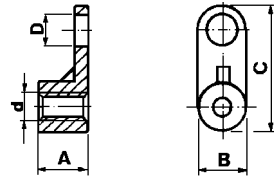
Application example





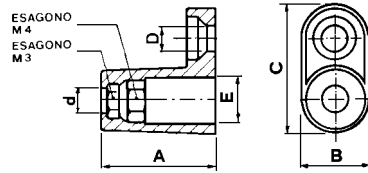


## Piedini Feet



Materiale / Material  
6 Nylon 66 RV

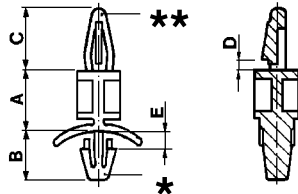
Codice / Code	Dimensioni / Dimensions (mm)					Materiale / Material	Colore / Colour
	A	B	C	D	d		
5422/3	6,5	7	17	4	M 3x0,5	6	0 Neutro Natural
5422	6,5	7	17	4	M 4x0,7	6	



Materiale / Material  
6 Nylon 66 RV

Codice / Code	Dimensioni / Dimensions (mm)						Materiale / Material	Colore / Colour
	A	B	C	D	d	E		
5382	20	11	22,3	4,5	4	8,2	6	2 Nero Black

## Supporti P.C.B. P.C.B. supports



Materiale / Material  
5 Nylon 66

Codice / Code	Dimensioni / Dimensions (mm)					Materiale / Material	Colore / Colour
	A	B	C	D	E		
5321/6	6,3	7,5	10	1,6	1,5÷2,6	5	0 Neutro Natural
5321/9	9,5	7,5	10	1,6	1,5÷2,6	5	
5321/12	12,6	7,5	10	1,6	1,5÷2,6	5	
5321/15	15,8	7,5	10	1,6	1,5÷2,6	5	
5321/19	19	7,5	10	1,6	1,5÷2,6	5	
5321/22	22,2	7,5	10	1,6	1,5÷2,6	5	
5321/18/6	6,3	7,5	10	1,8	1,5÷2,6	5	
5321/18/9	9,5	7,5	10	1,8	1,5÷2,6	5	
5321/18/12	12,6	7,5	10	1,8	1,5÷2,6	5	
5321/18/15	15,8	7,5	10	1,8	1,5÷2,6	5	
5321/18/19	19	7,5	10	1,8	1,5÷2,6	5	
5321/18/22	22,2	7,5	10	1,8	1,5÷2,6	5	

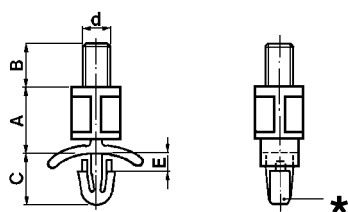
\* Foro per fissaggio: Ø 4,75 mm - Carico a trazione scheda: Kg 12  
\* Fixing hole: DIA. 4,75 mm - Board bearable load: 12 Kgs

\*\* Foro per fissaggio: Ø 4 mm - Carico a trazione scheda: Kg 7  
\*\* Fixing hole: DIA. 4 mm - Board bearable load: 7 Kgs



## Supporti P.C.B.

P.C.B. supports



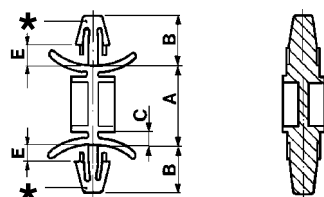
Materiale / Material

5 Nylon 66

Codice / Code	Dimensioni / Dimensions (mm)					Colore / Colour	
	A	B	C	d	E	0 Neutro Natural	5
5370/6	6,3	6,35	7,5	M 4x0,7	1,5÷2,6	Materiale Material →	5
5370/9	9,5	6,35	7,5	M 4x0,7	1,5÷2,6		5
5370/12	12,6	6,35	7,5	M 4x0,7	1,5÷2,6		5
5370/15	15,8	6,35	7,5	M 4x0,7	1,5÷2,6		5
5370/19	19	6,35	7,5	M 4x0,7	1,5÷2,6		5
5370/22	22	6,35	7,5	M 4x0,7	1,5÷2,6		5

\* Foro per fissaggio: Ø 4,75 mm - Carico a trazione scheda: Kg 12

\* Fixing hole: Ø 4,75 mm - Board bearable load: 12 Kgs



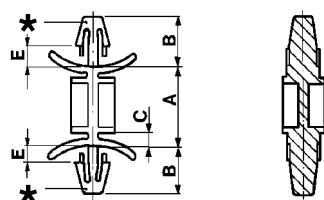
Materiale / Material

5 Nylon 66

Codice / Code	Dimensioni / Dimensions (mm)				Colore / Colour	
	A	B	C	E	0 Neutro Natural	5
5359/6	8,6	7,5	2,2	1,5÷2,6	Materiale Material →	5
5359/9	11,7	7,5	2,2	1,5÷2,6		5
5359/12	14,8	7,5	2,2	1,5÷2,6		5
5359/15	18	7,5	2,2	1,5÷2,6		5
5359/19	21,2	7,5	2,2	1,5÷2,6		5
5359/22	24,2	7,5	2,2	1,5÷2,6		5

\* Foro per fissaggio: Ø 4,75 mm - Carico a trazione scheda: Kg 12

\* Fixing hole: Ø 4,75 mm - Board bearable load: 12 Kgs



Materiale / Material

5 Nylon 66

Codice / Code	Dimensioni / Dimensions (mm)				Colore / Colour	
	A	B	C	E	0 Neutro Natural	5
5359/4/6	8,6	6,8	2,2	1,5÷2,6	Materiale Material →	5
5359/4/9	11,7	6,8	2,2	1,5÷2,6		5
5359/4/12	14,8	6,8	2,2	1,5÷2,6		5
5359/4/15	18	6,8	2,2	1,5÷2,6		5
5359/4/22	24,2	6,8	2,2	1,5÷2,6		5

\* Foro per fissaggio: Ø 4 mm - Carico a trazione scheda: Kg 10

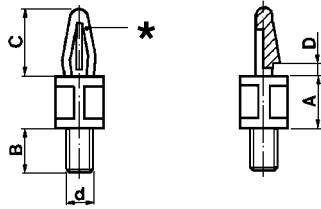
\* Fixing hole: Ø 4 mm - Board bearable load: 10 Kgs





## Supporti P.C.B.

P.C.B. supports



Materiale / Material

5 Nylon 66

Codice / Code	Dimensioni / Dimensions (mm)					d	Materiale / Material	Colore / Colour
	A	B	C	D				
5372/6	4,4	6,35	10	1,6	M 4x0,7	5	Neutro Natural	
5372/9	7,5	6,35	10	1,6	M 4x0,7	5		
5372/12	10,5	6,35	10	1,6	M 4x0,7	5		
5372/15	13,8	6,35	10	1,6	M 4x0,7	5		
5372/19	17	6,35	10	1,6	M 4x0,7	5		
5372/22	20	6,35	10	1,6	M 4x0,7	5		
5372/18/6	4,4	6,35	10	1,8	M 4x0,7	5		
5372/18/9	7,5	6,35	10	1,8	M 4x0,7	5		
5372/18/12	10,5	6,35	10	1,8	M 4x0,7	5		
5372/18/15	13,8	6,35	10	1,8	M 4x0,7	5		
5372/18/19	17	6,35	10	1,8	M 4x0,7	5		
5372/18/22	20	6,35	10	1,8	M 4x0,7	5		

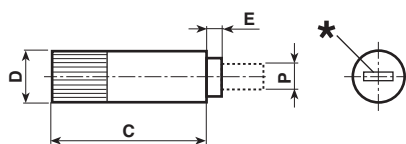
\* Foro per fissaggio: Ø 4 mm - Carico a trazione scheda: Kg 7

\* Fixing hole: Ø 4 mm - Board bearable load: 7 Kgs



# Alberini trimmer

## Trimmer regulation supports



Materiale / Material

6 Nylon 66 RV

Codice / Code	Dimensioni / Dimensions (mm)					Colore / Colour									Profilo Profile
	A	B	C	D	d	0 Neutro Natural	1 Bianco White	2 Nero Black	3 Rosso Red	6 Blu Blue	7 Verde Green	9 Giallo Yellow			
5367/14	3	3,7	14	5,8	1,2	6									
5367/19	3	3,7	19	5,8	1,2	6									
5367/24	3	3,7	24	5,8	1,2	6									
5367/29	3	3,7	29	5,8	1,2	6	6	6							
5367/35	3	3,7	35	5,8	1,2	6									
5367/40	3	3,7	40	5,8	1,2	6									
5367/1/14	3,6	0,8	14	5,8	1,2	6									
5367/1/19	3,6	0,8	19	5,8	1,2	6									
5367/1/24	3,6	0,8	24	5,8	1,2	6									
5367/1/40	3,6	0,8	40	5,8	1,2	6									
5367/2/14	2,3	0,7	14	5,8	1,2	6									
5367/2/19	2,3	0,7	19	5,8	1,2	6									
5367/2/29	2,3	0,7	29	5,8	1,2	6									
5367/3/14	2	0,7	14	5,8	1,2	6									
5367/3/40	2	0,7	40	5,8	1,2	6									
5367/4/14	2,3	2	14	5,8	1,2	6									
5367/4/19	2,3	2	19	5,8	1,2	6									
5367/4/24	2,3	2	24	5,8	1,2	6	6	6	6	6	6	6	6		
5367/4/29	2,3	2	29	5,8	1,2	6									
5367/4/35	2,3	2	35	5,8	1,2	6									
5367/4/40	2,3	2	40	5,8	1,2	6									

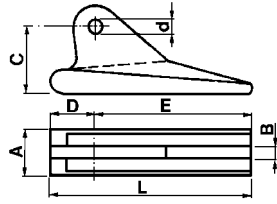
\* Registrabile con giravite 1x3 mm  
 \* Screwdriver adjustable 1x3 mm





## Toglischede P.C.B.

P.C.B. ejectors



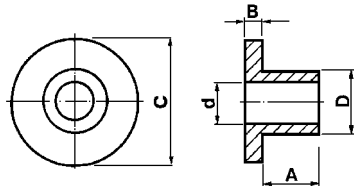
Materiale / Material

6 Nylon 66 RV

Codice / Code	Dimensioni / Dimensions (mm)							Colore / Colour						
	A	B	C	D	d	E	L	1 Bianco White	2 Nero Black	3 Rosso Red	6 Blu Blue	7 Verde Green	9 Giallo Yellow	
5062	7,5	2	10,5	7	2,5	25	32	Materiale / Material → 6	6	6	6	6	6	6

## Isolatori TO3

TO3 insulators



Materiale / Material

6 Nylon 66 RV

18 Polibutil RV-AE

Codice / Code	Dimensioni / Dimensions (mm)					Colore / Colour	
	A	B	C	D	d	0 Neutro Natural	1 Bianco White
5160/12	1,2	1,2	6,4	3,6	3	Materiale / Material → 6	18
5160/23	2,3	1,2	6,4	3,6	3	6	18
5160/40	4	1,2	6,4	3,6	3	6	18
5451	1,25	1,25	9,2	6,4	4,1		18



# Elettromeccanica Electromechanical



