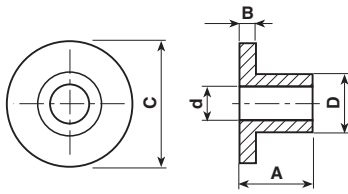




Boccole

Bushes



Materiale / Material

- 0 Polietilene
- 5 Nylon 66
- 6 Nylon 66 RV

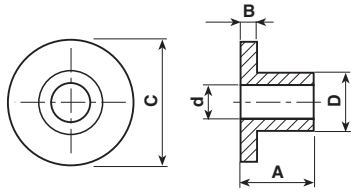
| Codice / Code | Dimensioni / Dimensions (mm) | | | | | Colore / Colour | | |
|---------------|------------------------------|---|-----|-----|----|----------------------|----------------|--------------|
| | A | B | D | d | C | 0 Neutro Natural | 1 Bianco White | 2 Nero Black |
| 5524/68/10 | 10 | 2 | 6,8 | 4,1 | 11 | Materiale Material → | 6 | 6 |
| 5524/68/16 | 16 | 2 | 6,8 | 4,1 | 11 | | 6 | 6 |
| 5524/68/21 | 21 | 2 | 6,8 | 4,1 | 11 | | 6 | 6 |
| 5524/68/28 | 28 | 2 | 6,8 | 4,1 | 11 | | 6 | 6 |
| 5524/10 | 10 | 2 | 7,5 | 4,1 | 11 | | 6 | 6 |
| 5524/16 | 16 | 2 | 7,5 | 4,1 | 11 | | 6 | 6 |
| 5524/22 | 22 | 2 | 7,5 | 4,1 | 11 | | 6 | |
| 5524/28 | 28 | 2 | 7,5 | 4,1 | 11 | | 6 | 6 |
| 5323/1/2 | 2 | 1 | 6,2 | 5,2 | 10 | 0 5 | | |
| 5323/1/3 | 3 | 1 | 6,2 | 5,2 | 10 | 0 5 | | 5 |
| 5323/1/4 | 4 | 1 | 6,2 | 5,2 | 10 | 0 5 | | |
| 5323/1/5 | 5 | 1 | 6,2 | 5,2 | 10 | 0 5 | | |
| 5323/1/6 | 6 | 1 | 6,2 | 5,2 | 10 | 0 5 | | |
| 5323/1/7 | 7 | 1 | 6,2 | 5,2 | 10 | 0 5 | | |
| 5323/1/8 | 8 | 1 | 6,2 | 5,2 | 10 | 0 | | |
| 5323/1/9 | 9 | 1 | 6,2 | 5,2 | 10 | 0 5 | | |
| 5323/1/10 | 10 | 1 | 6,2 | 5,2 | 10 | 0 | | |
| 5323/2/3 | 3 | 2 | 6,2 | 5,2 | 10 | | | 5 |
| 5323/2/4 | 4 | 2 | 6,2 | 5,2 | 10 | 0 5 | | 5 |
| 5323/2/5 | 5 | 2 | 6,2 | 5,2 | 10 | 0 | | 5 |
| 5323/2/6 | 6 | 2 | 6,2 | 5,2 | 10 | 0 | 5 | 5 6 |
| 5323/2/7 | 7 | 2 | 6,2 | 5,2 | 10 | | | 6 |
| 5323/2/8 | 8 | 2 | 6,2 | 5,2 | 10 | 0 5 | | 6 |
| 5323/2/9 | 9 | 2 | 6,2 | 5,2 | 10 | 0 5 | | 5 |
| 5323/2/10 | 10 | 2 | 6,2 | 5,2 | 10 | 0 5 | | 6 |
| 5323/3/4 | 4 | 3 | 6,2 | 5,2 | 10 | 0 | | |
| 5323/3/5 | 5 | 3 | 6,2 | 5,2 | 10 | | 6 | 5 |
| 5323/3/6 | 6 | 3 | 6,2 | 5,2 | 10 | | | 5 |
| 5323/3/7 | 7 | 3 | 6,2 | 5,2 | 10 | 0 | | 6 |
| 5323/3/8 | 8 | 3 | 6,2 | 5,2 | 10 | 0 | | |
| 5323/3/10 | 10 | 3 | 6,2 | 5,2 | 10 | 0 | | |
| 5323/4/5 | 5 | 4 | 6,2 | 5,2 | 10 | | | 5 |
| 5323/4/6 | 6 | 4 | 6,2 | 5,2 | 10 | 0 5 | | |
| 5323/4/7 | 7 | 4 | 6,2 | 5,2 | 10 | | | 5 |
| 5323/4/10 | 10 | 4 | 6,2 | 5,2 | 10 | 0 | | |
| 5323/5/7 | 7 | 5 | 6,2 | 5,2 | 10 | 0 5 | | |
| 5323/5/9 | 9 | 5 | 6,2 | 5,2 | 10 | 0 | | |
| 5323/5/10 | 10 | 5 | 6,2 | 5,2 | 10 | 0 | | |
| 6118/2/1 | 2 | 1 | 9,8 | 6,3 | 20 | | | 6 |
| 6118/3/1 | 3 | 1 | 9,8 | 6,3 | 20 | | | 6 |
| 6118/3/2 | 3 | 2 | 9,8 | 6,3 | 20 | | | 6 |
| 6118/4/1 | 4 | 1 | 9,8 | 6,3 | 20 | | | 6 |
| 6118/4/2 | 4 | 2 | 9,8 | 6,3 | 20 | | 6 | 6 |





Boccole

Bushes

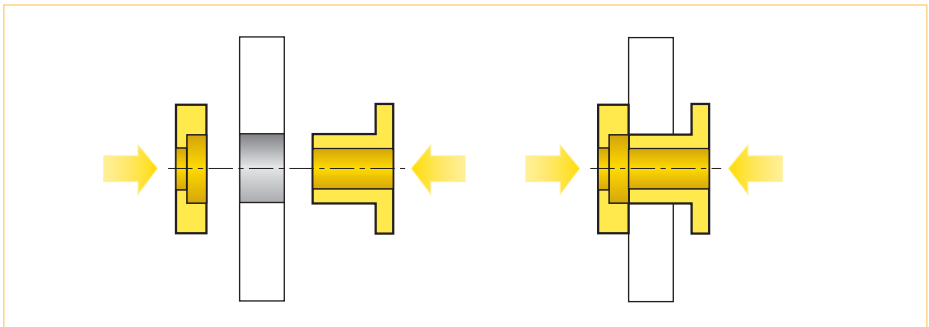


Materiale / Material
6 Nylon 66 RV

| Codice / Code | Dimensioni / Dimensions (mm) | | | | | Colore / Colour | |
|---------------|------------------------------|---|-----|-----|----|------------------------|--------------|
| | A | B | D | d | C | 0 Neutro Natural | 2 Nero Black |
| 6118/4/3 | 4 | 3 | 9,8 | 6,3 | 20 | Materiale / Material → | 6 |
| 6118/5/1 | 5 | 1 | 9,8 | 6,3 | 20 | | 6 |
| 6118/5/2 | 5 | 2 | 9,8 | 6,3 | 20 | | 6 |
| 6118/5/3 | 5 | 3 | 9,8 | 6,3 | 20 | 6 | |
| 6118/6/2 | 6 | 2 | 9,8 | 6,3 | 20 | | 6 |
| 6118/6/3 | 6 | 3 | 9,8 | 6,3 | 20 | | 6 |
| 6118/7/1 | 7 | 1 | 9,8 | 6,3 | 20 | | 6 |
| 6118/7/2 | 7 | 2 | 9,8 | 6,3 | 20 | | 6 |
| 6118/7/3 | 7 | 3 | 9,8 | 6,3 | 20 | | 6 |
| 6118/8/1 | 8 | 1 | 9,8 | 6,3 | 20 | | 6 |
| 6118/8/2 | 8 | 2 | 9,8 | 6,3 | 20 | | 6 |
| 6118/8/3 | 8 | 3 | 9,8 | 6,3 | 20 | | 6 |
| 6118/9/1 | 9 | 1 | 9,8 | 6,3 | 20 | | 6 |
| 6118/9/2 | 9 | 2 | 9,8 | 6,3 | 20 | | 6 |
| 6118/9/3 | 9 | 3 | 9,8 | 6,3 | 20 | | 6 |
| 6118/10/1 | 10 | 1 | 9,8 | 6,3 | 20 | | 6 |
| 6118/10/2 | 10 | 2 | 9,8 | 6,3 | 20 | | 6 |
| 6118/10/3 | 10 | 3 | 9,8 | 6,3 | 20 | | 6 |
| 6118/11/1 | 11 | 1 | 9,8 | 6,3 | 20 | | 6 |
| 6118/11/2 | 11 | 2 | 9,8 | 6,3 | 20 | | 6 |
| 6118/11/3 | 11 | 3 | 9,8 | 6,3 | 20 | | 6 |
| 6118/12/1 | 12 | 1 | 9,8 | 6,3 | 20 | | 6 |
| 6118/12/2 | 12 | 2 | 9,8 | 6,3 | 20 | | 6 |
| 6118/12/3 | 12 | 3 | 9,8 | 6,3 | 20 | | 6 |
| 6118/12/4 | 12 | 4 | 9,8 | 6,3 | 20 | | 6 |

Esempio di utilizzazione

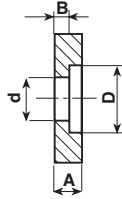
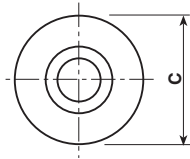
Application example





Boccole

Bushes



Materiale / Material

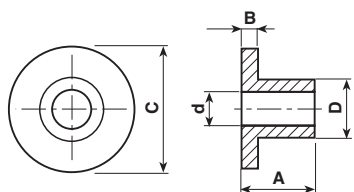
- 0** Polietilene
- 5** Nylon 66
- 6** Nylon 66 RV
- 18** Polibutil RV-AE

| Codice / Code | Dimensioni / Dimensions (mm) | | | | | Colore / Colour | |
|---------------|------------------------------|---|-----|-----|----|-----------------------------------|--------------|
| | A | B | D | d | C | 0 Neutro Natural | 2 Nero Black |
| 5323/0/1/2 | 2 | 1 | 6,3 | 5,2 | 10 | Materiale / Material → 0 5 | |
| 5323/0/1/3 | 3 | 1 | 6,3 | 5,2 | 10 | 0 5 | 6 |
| 5323/0/1/4 | 4 | 1 | 6,3 | 5,2 | 10 | 0 5 | 6 |
| 5323/0/1/5 | 5 | 1 | 6,3 | 5,2 | 10 | 0 5 | |
| 5323/0/2/3 | 3 | 2 | 6,3 | 5,2 | 10 | 0 5 | |
| 5323/0/2/4 | 4 | 2 | 6,3 | 5,2 | 10 | 0 5 | |
| 5323/0/2/5 | 5 | 2 | 6,3 | 5,2 | 10 | 0 5 | |
| 5323/0/3/5 | 5 | 2 | 6,3 | 5,2 | 10 | 0 5 | |
| 6118/0/1/2 | 2 | 1 | 9,8 | 6,3 | 20 | | 6 18 |
| 6118/0/1/3 | 3 | 1 | 9,8 | 6,3 | 20 | | 6 |
| 6118/0/1/4 | 4 | 1 | 9,8 | 6,3 | 20 | | 6 |
| 6118/0/2/3 | 3 | 2 | 9,8 | 6,3 | 20 | | 6 |
| 6118/0/2/4 | 4 | 2 | 9,8 | 6,3 | 20 | | 6 |
| 6118/0/3/4 | 4 | 3 | 9,8 | 6,3 | 20 | 6 | |



Boccole isolanti

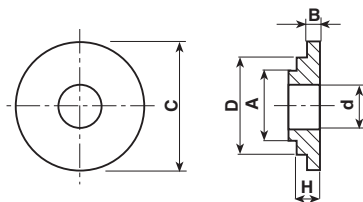
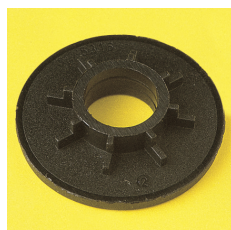
Insulating bushes



Materiale / Material

- 0** Polietilene
- 5** Nylon 66
- 6** Nylon 66 RV
- 18** Polibutil RV-AE

| Codice / Code | Dimensioni / Dimensions (mm) | | | | | Colore / Colour | | |
|---------------|------------------------------|------|------|------|------|-------------------------------|----------------|--------------|
| | A | B | D | d | C | 0 Neutro Natural | 1 Bianco White | 2 Nero Black |
| 6100 | 9,5 | 2,5 | 2,3 | 1,4 | 10,5 | Materiale Material → 6 | | |
| 5160/12 | 1,2 | 1,2 | 3,6 | 3 | 6,4 | 6 | 18 | |
| 5160/23 | 2,3 | 1,2 | 3,6 | 3 | 6,4 | 6 | 18 | |
| 5160/40 | 4 | 1,2 | 3,6 | 3 | 6,4 | 6 | 18 | |
| 6104 | 7,3 | 2 | 5 | 3,3 | 13,8 | 6 | | |
| 5451 | 1,25 | 1,25 | 6,4 | 4,1 | 9,2 | | 18 | |
| 6107/11 | 4,5 | 1,5 | 7 | 5 | 11 | | 6 | 6 |
| 5111 | 5 | 1,8 | 6 | 4,5 | 9 | 0 | | |
| 6107 | 7,5 | 2 | 7,5 | 5,8 | 14 | 6 | | 6 |
| 6108 | 6,5 | 3 | 8,2 | 6,5 | 16,9 | 6 | | 6 |
| 6109 | 8 | 2,5 | 9,8 | 8,2 | 19,7 | 6 | | 6 |
| 5555 | 10 | 2 | 12,1 | 8,2 | 16 | 5 | | |
| 6116 | 4,2 | 4,5 | 17,7 | 10,5 | 28 | 6 | | 6 |
| 5315 | 6 | 1 | 27,5 | 26 | 30 | 0 | | 0 6 |



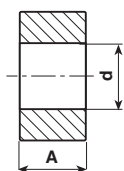
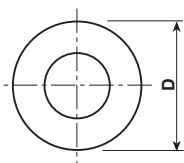
Materiale / Material

- 6** Nylon 66 RV

| Codice / Code | Dimensioni / Dimensions (mm) | | | | | | Colore / Colour | |
|---------------|------------------------------|-----|------|------|----|-----|-----------------|----------------------|
| | A | B | D | d | C | H | 2 Nero Black | Materiale Material → |
| 5316 | 16,5 | 2,5 | 21,5 | 10,5 | 30 | 4,2 | 6 | 6 |



Distanziatori Spacers



Materiale / Material

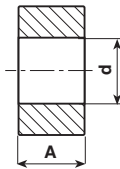
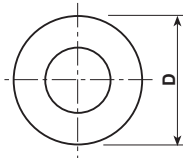
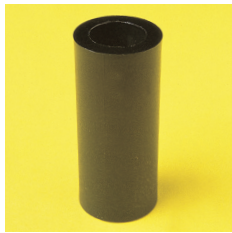
- 0** Polietilene
- 5** Nylon 66
- 6** Nylon 66 RV
- 8** Polietilene PE-LLD
- 18** Polibutil RV-AE

| Codice / Code | Dimensioni / Dimensions (mm) | | | Colore / Colour | | |
|---------------|------------------------------|-----|-----|-------------------------------|----------------|--------------|
| | A | D | d | 0 Neutro Natural | 1 Bianco White | 2 Nero Black |
| 5515/3 | 3 | 4,5 | 2,4 | Materiale Material → 5 | | |
| 5515/5 | 5 | 4,5 | 2,4 | 5 | | |
| 5515/10 | 10 | 4,5 | 2,4 | 5 | | |
| 5516/3 | 3 | 5 | 2,7 | 5 | | |
| 5516/5 | 5 | 5 | 2,7 | 5 | | |
| 5516/10 | 10 | 5 | 2,7 | 5 | | |
| 5021/3 | 3 | 7 | 3,2 | 0 6 | 18 | |
| 5021/4 | 4 | 7 | 3,2 | 0 5 | | 6 |
| 5021/5 | 5 | 7 | 3,2 | 0 5 | 6 | 6 |
| 5036/3/5/4 | 4 | 14 | 3,5 | 6 | 6 | |
| 5036/3/5/5 | 5 | 14 | 3,5 | 6 | | |
| 5021/35/3 | 3 | 7 | 3,5 | 5 | | |
| 5021/35/4 | 4 | 7 | 3,5 | 5 | | |
| 5021/35/5 | 5 | 7 | 3,5 | 5 | | |
| 5021/35/6 | 6 | 7 | 3,5 | 5 | | |
| 5021/35/7 | 7 | 7 | 3,5 | 5 | | |
| 5229/5 | 5 | 6 | 4 | | 6 | 6 |
| 5229/8 | 8 | 6 | 4 | 6 | | |
| 5229/10 | 10 | 6 | 4 | | | 6 |
| 5229/127 | 12,7 | 6 | 4 | | | 6 |
| 5229/15 | 15 | 6 | 4 | | 6 | 6 |
| 5229/19 | 19 | 6 | 4 | | | 6 |
| 5229/20 | 20 | 6 | 4 | | 6 | 6 |
| 5229/25 | 25 | 6 | 4 | | | 6 |
| 5229/30 | 30 | 6 | 4 | | | 6 |
| 5229/35 | 35 | 6 | 4 | | | 6 |
| 5015/4/4 | 4 | 10 | 4,3 | 0 6 | | 6 |
| 5015/4/5 | 5 | 10 | 4,3 | 0 6 | | 6 |
| 5036/5/4 | 4 | 14 | 5 | 0 6 | | |
| 5036/5/5 | 5 | 14 | 5 | 0 6 | 18 | 6 |
| 5548/5 | 5 | 8 | 5,1 | | | 6 |
| 5548/10 | 10 | 8 | 5,1 | | 6 | 6 |
| 5548/15 | 15 | 8 | 5,1 | | | 6 |
| 5548/20 | 20 | 8 | 5,1 | | 6 | 6 |
| 5548/25 | 25 | 8 | 5,1 | | | 6 |
| 5548/27 | 27 | 8 | 5,1 | | | 6 |
| 5548/30 | 30 | 8 | 5,1 | | | 6 |
| 5548/35 | 35 | 8 | 5,1 | | 6 | 6 |
| 5548/40 | 40 | 8 | 5,1 | | | 6 |
| 5301/4 | 4 | 10 | 5,3 | 0 | | |
| 5301/5 | 5 | 10 | 5,3 | 6 | 6 | 6 |
| 5070/10 | 10 | 10 | 5,5 | | 6 | 6 |
| 5502/43/5 | 4,3 | 12 | 4,9 | 8 | | |





Distanziatori Spacers



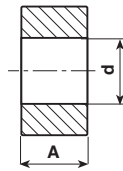
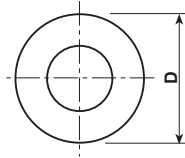
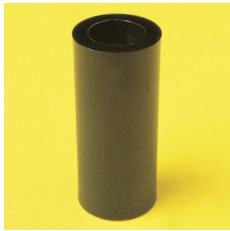
Materiale / Material

- 0** Polietilene
- 6** Nylon 66 RV
- 18** Polibutil RV-AE

| Codice / Code | Dimensioni / Dimensions (mm) | | | Colore / Colour | | |
|---------------|------------------------------|----|-----|-------------------------|-------------------|-----------------|
| | A | D | d | 0 Neutro Natural | 1 Bianco White | 2 Nero Black |
| 5070/15 | 15 | 10 | 5,5 | Materiale Material → | 6 | |
| 5070/20 | 20 | 10 | 5,5 | | 6 | |
| 5070/25 | 25 | 10 | 5,5 | | 6 | 6 |
| 5015/6/4 | 4 | 10 | 6 | 0 6 | | 6 |
| 5015/6/5 | 5 | 10 | 6 | 0 6 | | 6 |
| 5550/05 | 5 | 10 | 6,1 | | | 6 |
| 5550/10 | 10 | 10 | 6,1 | | 6 | 6 |
| 5550/15 | 15 | 10 | 6,1 | | | 6 |
| 5550/20 | 20 | 10 | 6,1 | | | 6 |
| 5550/25 | 25 | 10 | 6,1 | | 6 | 6 |
| 5550/30 | 30 | 10 | 6,1 | | | 6 |
| 5550/35 | 35 | 10 | 6,1 | | | 6 |
| 5550/40 | 40 | 10 | 6,1 | | | 6 |
| 5550/45 | 45 | 10 | 6,1 | | | 6 |
| 6118/1/4 | 4 | 20 | 6,3 | | 6 | 6 |
| 5302/4 | 4 | 12 | 6,4 | | | 6 |
| 5302/5 | 5 | 12 | 6,4 | 0 6 | 6 | 6 |
| 5302/10 | 10 | 12 | 6,4 | | 6 | 6 |
| 5036/7/4 | 4 | 14 | 7 | 0 6 | | |
| 5036/7/5 | 5 | 14 | 7 | 0 6 | | 6 |
| 5036/8/4 | 4 | 14 | 8 | 0 | | |
| 5036/8/5 | 5 | 14 | 8 | 0 6 | | 6 |
| 5552/5 | 5 | 13 | 8,1 | | 6 | 6 |
| 5552/10 | 10 | 13 | 8,1 | | | 6 |
| 5552/15 | 15 | 13 | 8,1 | | | 6 |
| 5552/20 | 20 | 13 | 8,1 | | | 6 |
| 5552/25 | 25 | 13 | 8,1 | | | 6 |
| 5552/30 | 30 | 13 | 8,1 | | | 6 |
| 5552/35 | 35 | 13 | 8,1 | | | 6 |
| 5552/40 | 40 | 13 | 8,1 | | | 6 |



Distanziatori Spacers



Materiale / Material

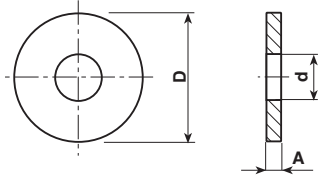
- 0** Polietilene
- 2** ABS
- 5** Nylon 66
- 6** Nylon 66 RV
- 10** Polistirolo

| Codice / Code | Dimensioni / Dimensions (mm) | | | Colore / Colour | | |
|---------------|------------------------------|------|------|------------------------|----------------|--------------|
| | A | D | d | 0 Neutro Natural | 1 Bianco White | 2 Nero Black |
| 5300/8/4 | 4 | 17 | 8,4 | Materiale Material → 6 | 6 | |
| 5300/8/5 | 5 | 17 | 8,4 | 0 6 | 6 | |
| 5400/09/4 | 4 | 18 | 9 | | 6 | 6 |
| 5400/09/5 | 5 | 18 | 9 | | | 6 |
| 5400/09/6 | 6 | 18 | 9 | | | 6 |
| 5400/09/7 | 7 | 18 | 9 | | 5 | 6 |
| 5400/09/8 | 8 | 18 | 9 | 0 | | 6 |
| 5300/10/4 | 4 | 17 | 10,5 | 0 | 6 | 6 |
| 5300/10/5 | 5 | 17 | 10,5 | 0 6 | 6 | 6 |
| 5114/5 | 5 | 20 | 10,5 | 0 6 | | 6 |
| 5114/10 | 10 | 20 | 10,5 | 0 6 | 6 | 6 |
| 5146/5 | 5 | 15 | 10 | 6 | 6 | 6 |
| 5146/8 | 8 | 15 | 10 | | | 2 6 |
| 5146/10 | 10 | 15 | 10 | 6 | 6 | 6 |
| 5146/15 | 15 | 15 | 10 | | 6 | 6 |
| 5146/18 | 18 | 15 | 10 | | | 6 |
| 5146/20 | 20 | 15 | 10 | 6 | 6 | 6 |
| 5907 | 45 | 14,5 | 10,5 | | 10 | 6 10 |
| 5400/13/4 | 4 | 18 | 13 | | | 6 |
| 5400/13/5 | 5 | 18 | 13 | | | 6 |
| 5400/13/6 | 6 | 18 | 13 | | | 6 |
| 5400/13/7 | 7 | 18 | 13 | | | 6 |
| 5400/13/8 | 8 | 18 | 13 | 0 | | 6 |
| 5568/5 | 5 | 20 | 14 | | 6 | 6 |
| 5568/10 | 10 | 20 | 14 | | 6 | 6 |
| 5400/16/4 | 4 | 18 | 16 | | 6 | 6 |
| 5400/16/5 | 5 | 18 | 16 | | | 6 |
| 5400/16/6 | 6 | 18 | 16 | | | 6 |
| 5400/16/7 | 7 | 18 | 16 | | | 6 |
| 5400/16/8 | 8 | 18 | 16 | 0 | | 6 |
| 6117 | 4,5 | 28 | 18 | 6 | | 6 |





Rondelle Washers



Materiale / Material

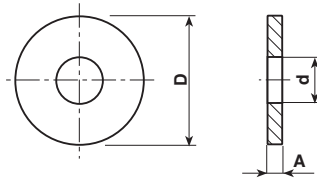
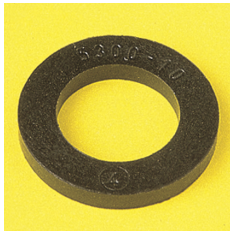
- 0** Polietilene
- 5** Nylon 66
- 6** Nylon 66 RV
- 18** Polibutil RV-AE

| Codice / Code | Dimensioni / Dimensions (mm) | | | Colore / Colour | | | |
|---------------|------------------------------|-----|-----|------------------|----------------|--------------|-------------|
| | D | d | A | 0 Neutro Natural | 1 Bianco White | 2 Nero Black | 3 Rosso Red |
| 5515/05 | 4,5 | 2,4 | 0,5 | Materiale → 5 | | | |
| 5515/1 | 4,5 | 2,4 | 1 | 5 | | | |
| 5515/2 | 4,5 | 2,4 | 2 | 5 | | | |
| 5516/05 | 5 | 2,7 | 0,5 | 5 | | | |
| 5516/1 | 5 | 2,7 | 1 | 5 | | | |
| 5516/2 | 5 | 2,7 | 2 | 5 | | | |
| 5021/1 | 7 | 3,2 | 1 | 0 6 | 6 | 0 6 | |
| 5021/2 | 7 | 3,2 | 2 | 0 6 | | 18 | |
| 5301/34/1 | 10 | 3,4 | 1 | 6 | | | |
| 5301/34/2 | 10 | 3,4 | 2 | 6 | | 6 | |
| 5301/34/3 | 10 | 3,4 | 3 | 6 | | | |
| 5021/35/1 | 7 | 3,5 | 1 | 5 | | 6 | |
| 5021/35/2 | 7 | 3,5 | 2 | | | 6 | |
| 5036/3/5/1 | 14 | 3,7 | 1 | 0 6 | | | |
| 5036/3/5/2 | 14 | 3,7 | 2 | 0 6 | | | |
| 5036/3/5/3 | 14 | 3,7 | 3 | 0 6 | | | |
| 5098/36/1 | 8 | 3,6 | 1 | 0 | | | |
| 5098/36/12 | 8 | 3,6 | 1,2 | 0 | | | |
| 5098/36/2 | 8 | 3,6 | 2 | 0 | | | |
| 5098/36/3 | 8 | 3,6 | 3 | 0 | | | |
| 5302/1536 | 12 | 3,6 | 1,5 | 5 | | | |
| 5302/1537 | 12 | 3,7 | 1,5 | 5 | | | |
| 5015/4/1 | 10 | 4,3 | 1 | 0 6 | 6 | 6 | |
| 5015/4/2 | 10 | 4,3 | 2 | 0 6 | 6 18 | 6 18 | 6 |
| 5015/4/3 | 10 | 4,3 | 3 | 0 6 | 18 | 0 6 | |
| 5302/4/15 | 12 | 4,3 | 1,5 | 5 | | 6 | |
| 5302/4/2 | 12 | 4,3 | 2 | | | 6 | |
| 5302/4/3 | 12 | 4,3 | 3 | 5 | | 6 | |
| 5036/5/1 | 14 | 5 | 1 | 0 6 | 18 | 0 6 | |
| 5036/5/1/5 | 14 | 5 | 1,5 | 6 | | | |
| 5036/5/2 | 14 | 5 | 2 | 0 6 | 6 | 6 | |
| 5036/5/3 | 14 | 5 | 3 | 0 6 | | 6 | |
| 5109/2 | 18 | 5 | 2 | 0 | | 6 | |
| 5098 | 8 | 5,1 | 1,2 | 5 | | | |
| 5301/1 | 10 | 5,3 | 1 | 0 6 | 6 | 6 | |
| 5301/2 | 10 | 5,3 | 2 | 0 | | 6 | 6 |
| 5301/3 | 10 | 5,3 | 3 | 0 6 | | 6 | |
| 5015/6/1 | 10 | 6 | 1 | 0 6 | | 0 6 | |
| 5015/6/2 | 10 | 6 | 2 | 0 6 | 18 | 6 | |
| 5015/6/3 | 10 | 6 | 3 | 0 6 | | 6 | |
| 5385/08 | 29 | 6,2 | 0,8 | | | 0 | |
| 5385/18 | 29 | 6,2 | 1,8 | | | 0 | |
| 6118/1/1 | 20 | 6,2 | 1 | | 6 | 0 6 | |
| 6118/1/2 | 20 | 6,2 | 2 | | | 6 | |
| 6118/1/3 | 20 | 6,2 | 3 | 6 | | | |





Rondelle Washers



Materiale / Material

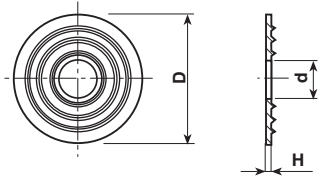
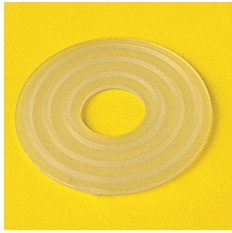
- 0 Polietilene
- 5 Nylon 66
- 6 Nylon 66 RV
- 18 Polibutil RV-AE

| Codice / Code | Dimensioni / Dimensions (mm) | | | Colore / Colour | | |
|---------------|------------------------------|------|-----|------------------|----------------|--------------|
| | D | d | A | 0 Neutro Natural | 1 Bianco White | 2 Nero Black |
| 5302/1 | 12 | 6,4 | 1 | 0 | 6 | 6 |
| 5302/1564 | 12 | 6,4 | 1,5 | 5 | | |
| 5302/2 | 12 | 6,4 | 2 | 0 | 6 | 5 |
| 5302/3 | 12 | 6,4 | 3 | | 6 | 6 |
| 5036/6/1 | 14 | 6,4 | 1 | | | 6 |
| 5036/6/2 | 14 | 6,4 | 2 | | 6 | 6 |
| 5036/6/3 | 14 | 6,4 | 3 | | | 6 |
| 5300/6/1 | 17 | 6,4 | 1 | 5 | | |
| 5300/6/2 | 17 | 6,4 | 2 | | 6 | 6 |
| 5300/6/3 | 17 | 6,4 | 3 | | | 6 |
| 5036/7/1 | 14 | 7 | 1 | 0 6 | 6 | 6 |
| 5036/7/2 | 14 | 7 | 2 | 0 6 | | 6 |
| 5036/7/3 | 14 | 7 | 3 | 0 6 | | 6 |
| 6118/1/7/2 | 20 | 7,2 | 2 | | | 6 |
| 5036/8/1 | 14 | 8 | 1 | 0 | 6 | 6 |
| 5036/8/2 | 14 | 8 | 2 | 0 6 | 18 | 6 |
| 5036/8/3 | 14 | 8 | 3 | 0 | 18 | |
| 5300/8/1 | 17 | 8 | 1 | 0 5 | 6 | 6 |
| 5300/8/2 | 17 | 8 | 2 | 0 6 | 6 18 | 6 |
| 5300/8/3 | 17 | 8 | 3 | 0 6 | 6 18 | |
| 5400/09/1 | 18 | 9 | 1 | 0 5 | | 5 |
| 5400/09/2 | 18 | 9 | 2 | | | 6 |
| 5400/09/3 | 18 | 9 | 3 | 0 | | |
| 5085 | 14 | 10,5 | 1,5 | 0 5 | 5 | 0 |
| 5146/1 | 15 | 10 | 1 | | 6 | |
| 5146/2 | 15 | 10 | 2 | | 6 | 6 |
| 5146/3 | 15 | 10 | 3 | | 6 | |
| 5300/10/1 | 17 | 10,5 | 1 | 0 6 | 6 | 6 |
| 5300/10/2 | 17 | 10,5 | 2 | 0 | 6 18 | 6 |
| 5300/10/3 | 17 | 10,5 | 3 | 0 | 6 | |
| 5114/1 | 20 | 10 | 1,2 | 0 6 | | 6 |
| 5114/2 | 20 | 10 | 2 | 0 6 | 18 | 0 6 18 |
| 5114/3 | 20 | 10 | 3 | 0 | 6 | |
| 5400/13/1 | 18 | 13 | 1 | 0 | | 5 |
| 5400/13/2 | 18 | 13 | 2 | 0 | | |
| 5400/13/3 | 18 | 13 | 3 | 0 | | |
| 5568/1 | 20 | 14 | 1,2 | 0 | 6 | |
| 5568/15 | 20 | 14 | 1,5 | 0 | 6 | |
| 5568/2 | 20 | 14 | 2 | 0 | 6 | |
| 5568/3 | 20 | 14 | 3 | 0 | 6 | |
| 5400/16/1 | 18 | 16 | 1 | 0 | | |
| 5400/16/2 | 18 | 16 | 2 | | | 6 |
| 5400/16/3 | 18 | 16 | 3 | 0 | | |
| 5124 | 25 | 21 | 2 | 6 | | |





Rondelle Washers

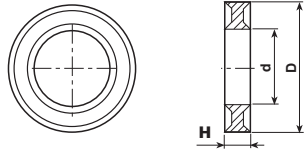
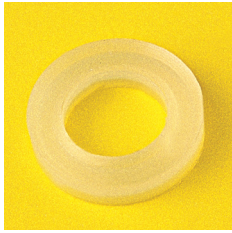


Materiale / Material

- 0** Polietilene
- 1** PVC
- 6** Nylon 66 RV

| Codice / Code | Dimensioni / Dimensions (mm) | | | Colore / Colour | |
|---------------|------------------------------|------|-----|---------------------------------|--------------|
| | D | d | H | 0 Neutro Natural | 2 Nero Black |
| 5040/8 | 40 | 8 | 2 | Materiale / Material → 0 | |
| 5040 | 40 | 10 | 2 | 0 | |
| 5040/13 | 40 | 13 | 2 | 0 | |
| 5026 | 22 | 10,5 | 2 | 0 1 6 | 0 6 |
| 5035 | 30 | 10,5 | 2 | 0 1 6 | 0 6 |
| 5035/13 | 30 | 13 | 2 | 0 1 6 | 0 6 |
| 5092 | 24 | 13,5 | 2,5 | 0 1 6 | 0 |
| 5133 | 52 | 13,5 | 2 | 0 6 | |
| 5491 | 34 | 26 | 2,5 | 0 | |

Rondelle antivibrazione Shakeproof washers



Materiale / Material

- 5** Nylon 66

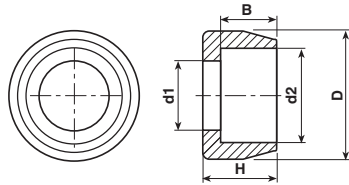
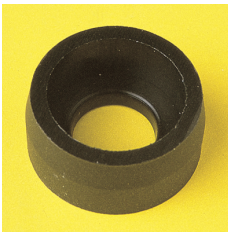
| Codice / Code | Dimensioni / Dimensions (mm) | | | Colore / Colour | |
|---------------|------------------------------|------|-----|---------------------------------|--------------|
| | D | d | H | 0 Neutro Natural | 2 Nero Black |
| 5354 | 9,5 | 4,15 | 2,1 | Materiale / Material → 5 | 5 |
| 5140 | 10,5 | 6,1 | 2,5 | 5 | 5 |
| 5128 | 12,5 | 6,3 | 3,4 | 5 | |
| 5129 | 14 | 8,1 | 3,3 | 5 | |
| 5130 | 17 | 10,2 | 3,8 | 5 | |
| 5137 | 19 | 12,2 | 4,4 | 5 | |





Sottotesta per viti T.C. - T.S.

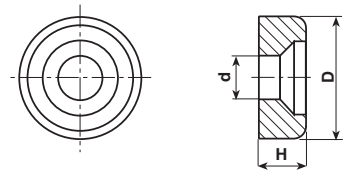
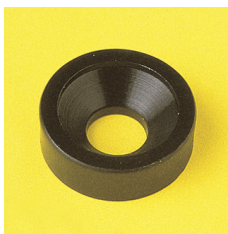
Finishing washers for countersunk head screws



Materiale / Material

5 Nylon 66

| Codice / Code | Dimensioni / Dimensions (mm) | | | | | Colore / Colour | |
|---------------|------------------------------|------|------|-----|-----|-------------------------|---------------|
| | D | d1 | d2 | B | H | 2 | Nero Black |
| 5397/3 | 7,8 | 3,2 | 5,6 | 2,2 | 3 | Materiale Material → | 5 |
| 5397/4 | 9,8 | 4,2 | 7,2 | 3 | 4 | | 5 |
| 5397/5 | 11,8 | 5,3 | 8,8 | 3,7 | 5 | | 5 |
| 5397/6 | 13,9 | 6,3 | 10,5 | 4,5 | 6 | | 5 |
| 5397/8 | 17,9 | 8,4 | 13,5 | 6 | 8 | | 5 |
| 5397/10 | 21,4 | 10,2 | 16,2 | 7,2 | 10 | | 5 |
| 5410/65 | 13,8 | 6,5 | 12,6 | 1,9 | 2,6 | | 5 |



Materiale / Material

5 Nylon 66

| Codice / Code | Dimensioni / Dimensions (mm) | | | Colore / Colour | |
|---------------|------------------------------|---|-----|-------------------------|---------------|
| | D | d | H | 2 | Nero Black |
| 5396/3 | 8 | 3 | 2,6 | Materiale Material → | 5 |
| 5396/4 | 10,7 | 4 | 3,5 | | 5 |
| 5396/5 | 13,4 | 5 | 4,4 | | 5 |
| 5396/6 | 16 | 6 | 5,2 | | 5 |
| 5396/8 | 21,4 | 8 | 7 | | 5 |





Resistenza meccanica viti e dadi

Screws and nuts mechanical strength characteristics

Resistenza a Torsione max (N cm)

Max Torsional Strenght (N cm)

| Descrizione Materials | Materiali Description | Sigla internazionale International Code | Cod Mat. STEAB STEAB's Code for Mat. | Dimensioni / Dimensions (mm) | | | | | |
|--------------------------------------|--------------------------|--|---|------------------------------|-----|-----|-----|-----|------|
| | | | | M 3 | M 4 | M 5 | M 6 | M 8 | M 10 |
| Filettatura maschio Male thread | Nylon 66 | PA66 | 5 | | | | | | |
| | Nylon 66-RV | PA66-RV | 6 | 10 | 20 | 50 | 100 | 200 | 300 |
| | Polycarbonate | PC | 11 | | | | | | |
| Filettatura femmina Female thread | Nylon 66 | PA66 | 5 | | | | | | |
| | Nylon 66-RV | PA66-RV | 6 | 15 | 50 | 75 | 175 | 300 | 450 |
| | Polycarbonate | PC | 11 | | | | | | |

Resistenza a Trazione max (N)

Max Tensile Strenght (N)

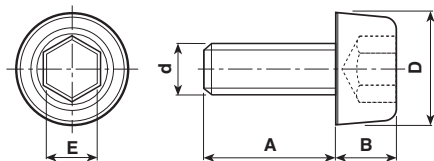
| Descrizione Materials | Materiali Description | Sigla internazionale International Code | Cod Mat. STEAB STEAB's Code for Mat. | Dimensioni / Dimensions (mm) | | | | | |
|--------------------------------------|--------------------------|--|---|------------------------------|-----|-----|------|------|------|
| | | | | M 3 | M 4 | M 5 | M 6 | M 8 | M 10 |
| Filettatura maschio Male thread | Nylon 66 | PA66 | 5 | | | | | | |
| | Nylon 66-RV | PA66-RV | 6 | 85 | 140 | 290 | 500 | 1000 | 1200 |
| | Polycarbonate | PC | 11 | | | | | | |
| Filettatura femmina Female thread | Nylon 66 | PA66 | 5 | | | | | | |
| | Nylon 66-RV | PA66-RV | 6 | 150 | 270 | 700 | 1000 | 1500 | 1800 |
| | Polycarbonate | PC | 11 | | | | | | |

Dadi esagonali alti - Prove effettuate a temperatura ambiente 20°C
Per viti e grani le lunghezze del gambo filettato sono in toll. ± 1mm.

Hexagonal nuts - Tests carried out at room temperature (20°C)
For screws and threaded grubs thread length has ± 1 mm tolerance.

Viti a cava esagonale

Flat fillister allen key screws



Materiale / Material

- 5 Nylon 66
- 6 Nylon 66 RV

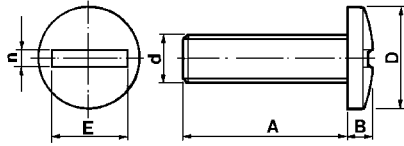
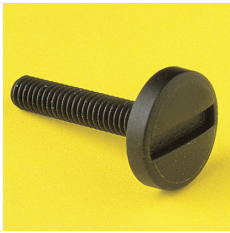
| Codice / Code | Dimensioni / Dimensions (mm) | | | | | Colore / Colour | |
|---------------|------------------------------|---|----|----------|---|---------------------|-----------------|
| | A | B | D | d | E | 0 Neutro Natural | 2 Nero Black |
| 5007/6/610 | 10 | 7 | 13 | M 6x1 | 6 | | 6 |
| 5007/6/613 | 13 | 7 | 13 | M 6x1 | 6 | | 6 |
| 5007/6/615 | 15 | 7 | 13 | M 6x1 | 6 | 5 | 5 6 |
| 5007/6/620 | 20 | 7 | 13 | M 6x1 | 6 | | 6 |
| 5007/6/820 | 20 | 7 | 13 | M 8x1,25 | 6 | | 6 |





Viti a testa cilindrica

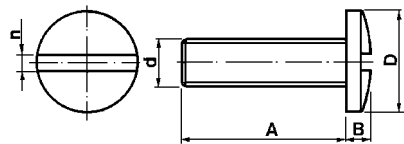
Flat fillister head screws



Materiale / Material

- 5 Nylon 66
- 6 Nylon 66 RV
- 9 Acetalica
- 11 Policarbonato

| Codice / Code | Dimensioni / Dimensions (mm) | | | | | | Colore / Colour | | | |
|---------------|------------------------------|-----|----|---------|----|-----|------------------|----------------|--------------|---------------|
| | A | B | D | d | E | n | 0 Neutro Natural | 1 Bianco White | 2 Nero Black | 8 Grigio Grey |
| 5007/02410 | 10 | 2,8 | 12 | M 4x0,7 | 10 | 2,2 | 11 | 5 | 9 | |
| 5007/02415 | 15 | 2,8 | 12 | M 4x0,7 | 10 | 2,2 | 11 | 9 | | |
| 5007/02420 | 20 | 2,8 | 12 | M 4x0,7 | 10 | 2,2 | 11 | 5 | 5 | |
| 5007/02510 | 10 | 2,8 | 12 | M 5x0,8 | 10 | 2,2 | | | 5 | |
| 5007/02515 | 15 | 2,8 | 12 | M 5x0,8 | 10 | 2,2 | | | 5 | |
| 5007/02520 | 20 | 2,8 | 12 | M 5x0,8 | 10 | 2,2 | | | 5 | |
| 5007/02610 | 10 | 2,8 | 12 | M 6x1 | 10 | 2,2 | 11 | 5 6 9 | 5 6 | |
| 5007/02613 | 13 | 2,8 | 12 | M 6x1 | 10 | 2,2 | | 5 | 5 | 6 |
| 5007/02615 | 15 | 2,8 | 12 | M 6x1 | 10 | 2,2 | 11 | 6 | 5 | |
| 5007/02620 | 20 | 2,8 | 12 | M 6x1 | 10 | 2,2 | 11 | | 5 | |



Materiale / Material

- 5 Nylon 66
- 9 Acetalica

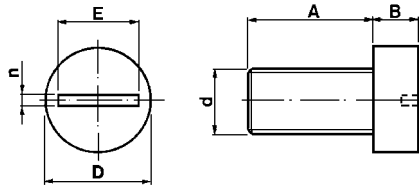
| Codice / Code | Dimensioni / Dimensions (mm) | | | | | Colore / Colour | |
|---------------|------------------------------|-----|----|---------|-----|------------------|--------------|
| | A | B | D | d | n | 0 Neutro Natural | 2 Nero Black |
| 5007/03410 | 10 | 2,8 | 10 | M 4x0,7 | 1,4 | 5 | 5 |
| 5007/03415 | 15 | 2,8 | 10 | M 4x0,7 | 1,4 | 5 | |
| 5007/03420 | 20 | 2,8 | 10 | M 4x0,7 | 1,4 | 5 | |
| 5007/03510 | 10 | 2,8 | 10 | M 5x0,8 | 1,4 | 5 | |
| 5007/03515 | 15 | 2,8 | 10 | M 5x0,8 | 1,4 | 5 | |
| 5007/03520 | 20 | 2,8 | 10 | M 5x0,8 | 1,4 | 5 | 5 |
| 5007/03610 | 10 | 2,8 | 10 | M 6x1 | 1,4 | 5 9 | 5 9 |
| 5007/03615 | 15 | 2,8 | 10 | M 6x1 | 1,4 | 5 | 5 |
| 5007/03620 | 20 | 2,8 | 10 | M 6x1 | 1,4 | 5 | 5 |





Viti a testa cilindrica

Flat fillister head screws



Materiale / Material

- 5** Nylon 66
- 9** Acetalica
- 25** Polifenilensolfuro

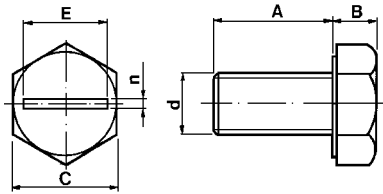
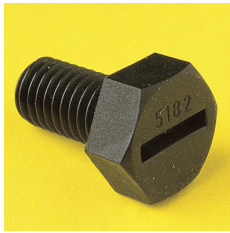
| Codice / Code | Dimensioni / Dimensions (mm) | | | | | | Colore / Colour | | | |
|---------------|------------------------------|-----|-----|----------|------|-----|------------------|----------------|--------------|------------|
| | A | B | D | d | E | n | 0 Neutro Natural | 1 Bianco White | 2 Nero Black | 4 Oro Gold |
| 5074 | 6 | 1,8 | 5,5 | M 3x0,5 | 3,8 | 0,9 | 5 | | | |
| 5074/8 | 8 | 1,8 | 5,5 | M 3x0,5 | 3,8 | 0,9 | 5 | | 5 | |
| 5074/10 | 10 | 1,8 | 5,5 | M 3x0,5 | 3,8 | 0,9 | 5 | | 5 | |
| 5074/15 | 15 | 1,8 | 5,5 | M 3x0,5 | 3,8 | 0,9 | 5 | | | |
| 5074/20 | 20 | 1,8 | 5,5 | M 3x0,5 | 3,8 | 0,9 | 5 | | | |
| 5074/4 | 6 | 1,8 | 5,5 | M 4x0,7 | 3,8 | 0,8 | | 5 | 5 | 5 |
| 5074/8/4 | 8 | 1,8 | 5,5 | M 4x0,7 | 3,8 | 0,8 | 25 | 5 | 5 | |
| 5074/10/4 | 10 | 1,8 | 5,5 | M 4x0,7 | 3,8 | 0,8 | | 5 | 5 | |
| 5178/1/10 | 10 | 2,8 | 7 | M 4x0,7 | 5 | 0,8 | 5 | 5 | 5 | |
| 5178/1/12 | 12 | 2,8 | 7 | M 4x0,7 | 5 | 0,8 | 5 | | | |
| 5178/1/15 | 15 | 2,8 | 7 | M 4x0,7 | 5 | 0,8 | 5 | | | |
| 5178/1/20 | 20 | 2,8 | 7 | M 4x0,7 | 5 | 0,8 | 5 | | | |
| 5178/1/25 | 25 | 2,8 | 7 | M 4x0,7 | 5 | 0,8 | 5 | | | |
| 5178/1/30 | 30 | 2,8 | 7 | M 4x0,7 | 5 | 0,8 | 5 | | 5 | |
| 5178/1/35 | 35 | 2,8 | 7 | M 4x0,7 | 5 | 0,8 | 5 | | | |
| 5183/1/6 | 6 | 3,3 | 8,5 | M 5x0,8 | 6 | 1,4 | 5 | | | |
| 5183/1/10 | 10 | 3,3 | 8,5 | M 5x0,8 | 6 | 1,4 | 5 | | 5 | |
| 5183/1/15 | 15 | 3,3 | 8,5 | M 5x0,8 | 6 | 1,4 | 5 | | 5 | |
| 5183/1/20 | 20 | 3,3 | 8,5 | M 5x0,8 | 6 | 1,4 | 5 | | | |
| 5183/1/25 | 25 | 3,3 | 8,5 | M 5x0,8 | 6 | 1,4 | 5 | | | |
| 5183/1/30 | 30 | 3,3 | 8,5 | M 5x0,8 | 6 | 1,4 | 5 | | 5 | |
| 5183/1/35 | 35 | 3,3 | 8,5 | M 5x0,8 | 6 | 1,4 | 5 | | | |
| 5177/1/7 | 7 | 4,1 | 10 | M 6x1 | 7 | 1,6 | 5 | | 5 | |
| 5177/1/10 | 10 | 4,1 | 10 | M 6x1 | 7 | 1,6 | | 5 | 5 | |
| 5177/1/12 | 12 | 4,1 | 10 | M 6x1 | 7 | 1,6 | 5 | 9 | | |
| 5177/1/20 | 20 | 4,1 | 10 | M 6x1 | 7 | 1,6 | 5 | | | |
| 5177/1/25 | 25 | 4,1 | 10 | M 6x1 | 7 | 1,6 | 5 | | | |
| 5177/1/30 | 30 | 4,1 | 10 | M 6x1 | 7 | 1,6 | 5 | | | |
| 5182/1/15 | 15 | 5 | 13 | M 8x1,25 | 10 | 2 | 5 | | 5 | |
| 5182/1/20 | 20 | 5 | 13 | M 8x1,25 | 10 | 2 | 5 | | | |
| 5182/1/25 | 25 | 5 | 13 | M 8x1,25 | 10 | 2 | 5 | | 5 | |
| 5182/1/30 | 30 | 5 | 13 | M 8x1,25 | 10 | 2 | 5 | | | |
| 5182/1/35 | 35 | 5 | 13 | M 8x1,25 | 10 | 2 | 5 | | | |
| 5167/1/20 | 20 | 6 | 16 | M 10x1,5 | 12,7 | 2,2 | 5 | | | |
| 5167/1/25 | 25 | 6 | 16 | M 10x1,5 | 12,7 | 2,2 | 5 | | | |
| 5167/1/30 | 30 | 6 | 16 | M 10x1,5 | 12,7 | 2,2 | 5 | | | |
| 5167/1/35 | 35 | 6 | 16 | M 10x1,5 | 12,7 | 2,2 | 5 | | | |





Viti a testa esagonale

Hexagonal head screws



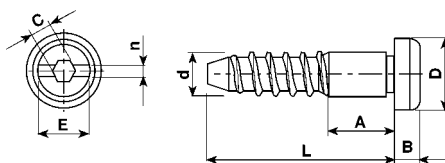
Materiale / Material

5 Nylon 66

| Codice / Code | Dimensioni / Dimensions (mm) | | | | | | Colore / Colour | | | |
|---------------|------------------------------|-----|----|----------|------|-----|---------------------|-------------------|-----------------|---------------|
| | A | B | C | d | E | n | 0 Neutro Natural | 1 Bianco White | 2 Nero Black | 4 Oro Gold |
| 5178/10 | 10 | 2,8 | 7 | M 4x0,7 | 4,7 | 1,1 | 5 | 5 | 5 | |
| 5178/12 | 12 | 2,8 | 7 | M 4x0,7 | 4,7 | 1,1 | 5 | 5 | 5 | 5 |
| 5178/15 | 15 | 2,8 | 7 | M 4x0,7 | 4,7 | 1,1 | 5 | 5 | 5 | |
| 5178/20 | 20 | 2,8 | 7 | M 4x0,7 | 4,7 | 1,1 | 5 | 5 | 5 | |
| 5178/25 | 25 | 2,8 | 7 | M 4x0,7 | 4,7 | 1,1 | 5 | 5 | 5 | |
| 5178/30 | 30 | 2,8 | 7 | M 4x0,7 | 4,7 | 1,1 | 5 | 5 | 5 | |
| 5178/35 | 35 | 2,8 | 7 | M 4x0,7 | 4,7 | 1,1 | 5 | | 5 | |
| 5183/10 | 10 | 3,7 | 8 | M 5x0,8 | 6 | 1,4 | 5 | | 5 | |
| 5183/15 | 15 | 3,7 | 8 | M 5x0,8 | 6 | 1,4 | 5 | 5 | 5 | |
| 5183/20 | 20 | 3,7 | 8 | M 5x0,8 | 6 | 1,4 | 5 | | 5 | |
| 5183/25 | 24 | 3,7 | 8 | M 5x0,8 | 6 | 1,4 | 5 | 5 | 5 | |
| 5183/30 | 29 | 3,7 | 8 | M 5x0,8 | 6 | 1,4 | 5 | | 5 | |
| 5183/35 | 35 | 3,7 | 8 | M 5x0,8 | 6 | 1,4 | 5 | | 5 | |
| 5177/7 | 7 | 4,3 | 10 | M 6x1 | 7,8 | 1,5 | 5 | | | |
| 5177/10 | 10 | 4,3 | 10 | M 6x1 | 7,8 | 1,5 | 5 | 5 | | |
| 5177/12 | 12 | 4,3 | 10 | M 6x1 | 7,8 | 1,5 | 5 | | | |
| 5177/15 | 15 | 4,3 | 10 | M 6x1 | 7,8 | 1,5 | 5 | | 5 | |
| 5177/20 | 20 | 4,3 | 10 | M 6x1 | 7,8 | 1,5 | 5 | | 5 | |
| 5177/25 | 25 | 4,3 | 10 | M 6x1 | 7,8 | 1,5 | 5 | | 5 | |
| 5177/30 | 30 | 4,3 | 10 | M 6x1 | 7,8 | 1,5 | 5 | | | |
| 5182/15 | 15 | 5,5 | 13 | M 8x1,25 | 9,8 | 1,9 | 5 | | 5 | |
| 5182/20 | 20 | 5,5 | 13 | M 8x1,25 | 9,8 | 1,9 | 5 | | | |
| 5182/25 | 25 | 5,5 | 13 | M 8x1,25 | 9,8 | 1,9 | 5 | | 5 | |
| 5182/30 | 30 | 5,5 | 13 | M 8x1,25 | 9,8 | 1,9 | 5 | | | |
| 5182/35 | 35 | 5,5 | 13 | M 8x1,25 | 9,8 | 1,9 | 5 | | | |
| 5167/20 | 20 | 7 | 17 | M 10x1,5 | 12,8 | 2 | 5 | | | |
| 5167/25 | 25 | 7 | 17 | M 10x1,5 | 12,8 | 2 | 5 | | | |
| 5167/30 | 30 | 7 | 17 | M 10x1,5 | 12,8 | 2 | 5 | | | |
| 5167/35 | 35 | 7 | 17 | M 10x1,5 | 12,8 | 2 | 5 | | | |

Viti autofilettanti per coperchi morsetti

Self-threading screws for terminal-block covers



Materiale / Material

9 Acetalica

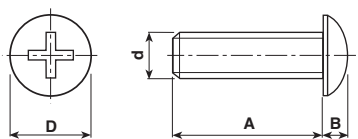
| Codice / Code | Dimensioni / Dimensions (mm) | | | | | | | | Colore / Colour | |
|---------------|------------------------------|-----|---|-----|---|---|----|---|-----------------|---|
| | A | B | C | D | d | E | L | n | 3 Rosso Red | 9 |
| 5519/17/2 | 6 | 2,5 | 2 | 6,9 | 4 | 5 | 17 | 1 | 9 | |





Viti con intaglio a croce

Cross-slotted screws



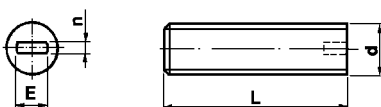
Materiale / Material

- 5** Nylon 66
- 6** Nylon 66 RV

| Codice / Code | Dimensioni / Dimensions (mm) | | | | Materiale / Material | Colore / Colour | |
|---------------|------------------------------|---|------|---------|----------------------|-----------------|--------------|
| | A | B | D | d | | 1 Bianco White | 2 Nero Black |
| 5007/7/410 | 10 | 4 | 12,5 | M 4x0,7 | Materiale → 6 | 6 | 6 |
| 5007/7/415 | 15 | 4 | 12,5 | M 4x0,7 | 6 | | |
| 5007/7/420 | 20 | 4 | 12,5 | M 4x0,7 | 6 | | |
| 5007/7/510 | 10 | 4 | 12,5 | M 5x0,8 | 5 | 5 | 5 |
| 5007/7/515 | 15 | 4 | 12,5 | M 5x0,8 | 5 | 5 | 5 |
| 5007/7/520 | 20 | 4 | 12,5 | M 5x0,8 | 5 | 5 | 5 |
| 5007/7/610 | 10 | 4 | 12,5 | M 6x1 | | | 5 |
| 5007/7/613 | 13 | 4 | 12,5 | M 6x1 | 5 | | |
| 5007/7/615 | 15 | 4 | 12,5 | M 6x1 | | | 5 |
| 5007/7/620 | 20 | 4 | 12,5 | M 6x1 | | | 5 |

Grani filettati

Threaded grubs



Materiale / Material

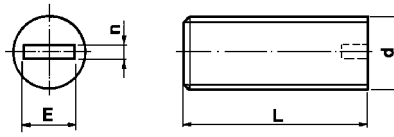
- 5** Nylon 66
- 6** Nylon 66 RV
- 18** Polibutilil RV-AE

| Codice / Code | Dimensioni / Dimensions (mm) | | | | Materiale / Material | Colore / Colour | | |
|---------------|------------------------------|---|----|-----|----------------------|------------------|----------------|--------------|
| | d | E | L | n | | 0 Neutro Natural | 1 Bianco White | 2 Nero Black |
| 5178/4/10 | M 4x0,7 | 3 | 10 | 0,7 | Materiale → 5 | | | 5 |
| 5178/4/15 | M 4x0,7 | 3 | 15 | 0,7 | 5 | | | 5 |
| 5178/4/20 | M 4x0,7 | 3 | 20 | 0,7 | 5 | | | 5 |
| 5178/4/25 | M 4x0,7 | 3 | 25 | 0,7 | 5 | | | 5 |
| 5178/4/30 | M 4x0,7 | 3 | 30 | 0,7 | 5 | | | |
| 5178/4/35 | M 4x0,7 | 3 | 35 | 0,7 | 5 | | | |
| 5183/5/6 | M 5x0,8 | 3 | 6 | 1 | 5 6 | | | 5 |
| 5183/5/10 | M 5x0,8 | 3 | 10 | 1 | 5 | 5 | | 5 |
| 5183/5/15 | M 5x0,8 | 3 | 15 | 1 | 5 | | | 5 18 |
| 5183/5/20 | M 5x0,8 | 3 | 20 | 1 | 5 | | | 5 |
| 5183/5/25 | M 5x0,8 | 3 | 25 | 1 | 5 | | | |
| 5183/5/35 | M 5x0,8 | 3 | 34 | 1 | | | | 5 |
| 5177/6/12 | M 6x1 | 4 | 12 | 1 | | | 5 | 5 |
| 5177/6/20 | M 6x1 | 4 | 20 | 1 | 5 | | | 5 |
| 5177/6/25 | M 6x1 | 4 | 25 | 1 | | | | 5 |
| 5177/6/30 | M 6x1 | 4 | 30 | 1 | | | | 5 |





Grani filettati Threaded grubs

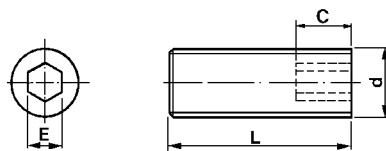


Materiale / Material

- 5** Nylon 66
- 6** Nylon 66 RV
- 9** Acetalica
- 11** Policarbonato
- 18** Polibutil RV-AE
- 21** Nylon 66 RV-AE
- 25** Polifenilensolfuro

| Codice / Code | Dimensioni / Dimensions (mm) | | | | Colore / Colour | | | | |
|---------------|------------------------------|-----|----|-----|---------------------------------|--------------------|-----------------|------------|-------------------|
| | d | E | L | n | 0 Neutro Natural | 1 Bianco White | 2 Nero Black | 4 Oro Gold | 10 Argento Silver |
| 5074/3/6 | M 3x0,5 | 2 | 6 | 0,8 | Materiale / Material → 5 | | 5 | | |
| 5074/3/8 | M 3x0,5 | 2 | 8 | 0,8 | 5 | | 5 | | |
| 5074/3/10 | M 3x0,5 | 2 | 10 | 0,8 | 5 | | 5 | | |
| 5074/4/4 | M 4x0,7 | 2 | 4 | 0,8 | | 5 | 5 | | |
| 5074/4/6 | M 4x0,7 | 2 | 6 | 0,8 | | 5 | 5 | | |
| 5074/4/8 | M 4x0,7 | 2 | 8 | 0,8 | | 25 5 | 5 | | |
| 5074/4/10 | M 4x0,7 | 2 | 10 | 0,8 | | 5 | 5 | | |
| 5068/6 | M 6x1 | 3,9 | 6 | 1,2 | 11 | 6 9 | 5 6 9 18 | 6 9 | |
| 5068/8 | M 6x1 | 3,9 | 8 | 1,2 | 25 | 6 9 18 | 5 6 9 18 | 6 9 | |
| 5068/10 | M 6x1 | 3,9 | 10 | 1,2 | | 6 18 | 5 6 18 | 9 | |
| 5068/15 | M 6x1 | 3,9 | 15 | 1,2 | | 6 9 18 21 | 5 6 9 18 | 6 9 | |
| 5408/10 | M 7x1 | 5 | 10 | 1,5 | 11 | 6 18 | 6 18 | 5 | 5 |
| 5408/15 | M 7x1 | 5 | 15 | 1,5 | | 6 | 6 | | |
| 5088 | M 8x1,25 | 5,3 | 8 | 1,5 | 11 | 9 | 9 | | |
| 5088/11 | M 8x1,25 | 5,3 | 11 | 1,5 | 11 | 6 9 | 6 9 18 | 9 | |

Grani filettati a cava esagonale Threaded grubs with hexagonal slot



Materiale / Material

- 5** Nylon 66
- 6** Nylon 66 RV
- 9** Acetalica
- 11** Policarbonato
- 18** Polibutil RV-AE
- 21** Nylon 66 RV-AE
- 24** Liquid Cristal Polymers
- 25** Polifenilensolfuro

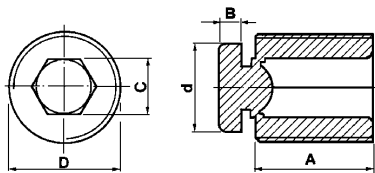
| Codice / Code | Dimensioni / Dimensions (mm) | | | | Colore / Colour | | | | |
|---------------|------------------------------|-----|-----|----|------------------------|----------------|--------------|------------|-------------------|
| | d | C | E | L | 0 Neutro Natural | 1 Bianco White | 2 Nero Black | 4 Oro Gold | 10 Argento Silver |
| 5074/4/4/2 | M 4x0,7 | 3 | 2 | 4 | Materiale / Material → | 5 | 5 | | |
| 5074/4/6/2 | M 4x0,7 | 3 | 2 | 6 | | 5 | 5 | | |
| 5074/4/8/2 | M 4x0,7 | 3 | 2 | 8 | 25 | 5 | 5 | | |
| 5074/4/10/2 | M 4x0,7 | 3 | 2 | 10 | | 5 | 5 18 | | |
| 5074/4/16/2 | M 4x0,7 | 3 | 2 | 16 | | 5 | 5 | | |
| 5183/25/6 | M 5x0,8 | 4 | 2,5 | 6 | 5 | 5 | 5 | | |
| 5183/25/10 | M 5x0,8 | 4 | 2,5 | 10 | 5 | 5 | 5 | | |
| 5183/25/15 | M 5x0,8 | 4 | 2,5 | 15 | 5 | 5 | 5 | | |
| 5068/03/6 | M 6x1 | 4,5 | 3 | 6 | 11 | 5 | 5 9 | | |
| 5068/03/8 | M 6x1 | 4,5 | 3 | 8 | 11 | 5 | 5 | | |
| 5068/03/10 | M 6x1 | 4,5 | 3 | 10 | | 5 | 5 18 | | |
| 5068/03/15 | M 6x1 | 4,5 | 3 | 15 | | 5 | 5 | | |
| 5408/4/10 | M 7x1 | 6 | 4 | 10 | 11 24 25 | 6 18 21 | 6 18 | 5 | 5 |
| 5408/4/15 | M 7x1 | 6 | 4 | 15 | | 6 9 | 6 9 | | |
| 5088/4/08 | M 8x1,25 | 6 | 4 | 8 | 11 | 6 | 6 9 | | |
| 5088/4/11 | M 8x1,25 | 6 | 4 | 11 | 11 | 6 9 | 6 9 | | |





Grani filettati per bloccacavi (Brevetto STEAB 11734)

Threaded grubs for cable-clamps (STEAB patent n. 11734)



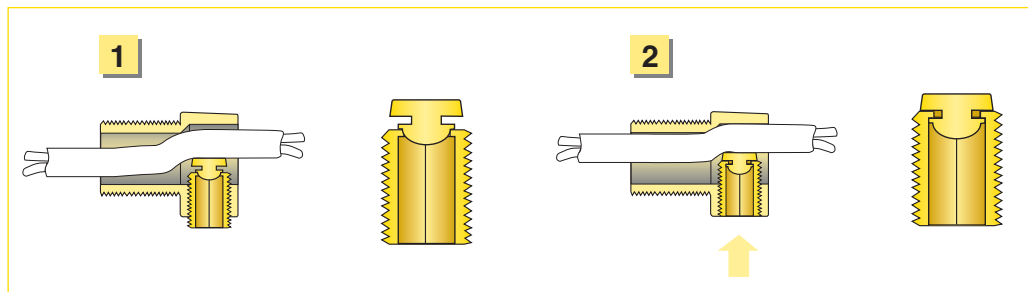
Materiale / Material

- 6** Nylon 66 RV
- 18** Polibutil RV-AE
- 22** Nylon 66 AE

| Codice / Code | Dimensioni / Dimensions (mm) | | | | | Colore / Colour | | |
|---------------|------------------------------|---|------|----------|-----|-------------------------|--------------|------------|
| | A | B | C | D | d | 1 Bianco White | 2 Nero Black | 4 Oro Gold |
| 5351 | 7 | 1 | 3 | M 6x1 | 4,5 | Materiale Material → 18 | 18 | |
| 5351/11 | 11 | 1 | 3 | M 6x1 | 4,5 | 18 | 18 | |
| 5435/7 | 7 | 1 | 4 | M 7x1 | 5,8 | 6 | 6 | |
| 5435 | 9 | 1 | 4 | M 7x1 | 5,7 | 6 18 22 | 6 18 22 | 6 |
| 5347 | 9,5 | 1 | 4 | M 8x1,25 | 6 | 6 18 | 6 | |
| 5019/14 | 17,5 | 2 | 8 | M 14x1,5 | 11 | 6 | 6 | |
| 5030/20 | 24 | 3 | 12,2 | M 20x1,5 | 15 | | 6 | |

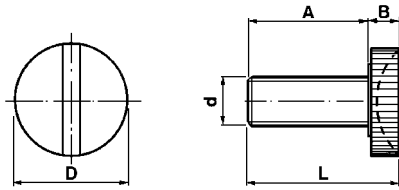
Esempio di utilizzazione

Application example





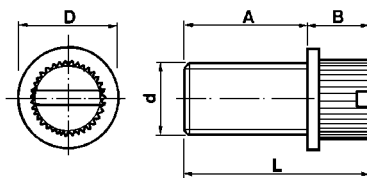
Pomelli filettati Threaded knobs



Materiale / Material

- 5 Nylon 66
- 6 Nylon 66 RV
- 11 Policarbonato

| Codice / Code | Dimensioni / Dimensions (mm) | | | | | Colore / Colour | | | | |
|---------------|------------------------------|-----|----|---------|------|----------------------|----------------|--------------|------------|---|
| | A | B | D | d | L | 0 Neutro Natural | 1 Bianco White | 2 Nero Black | 4 Oro Gold | |
| 5007/4/6 | 6 | 3,8 | 13 | M 4x0,7 | 9,8 | Materiale Material → | | 6 | 6 | 6 |
| 5007/4/10 | 10 | 3,8 | 13 | M 4x0,7 | 13,8 | | 6 | 6 | 6 | |
| 5007/4/15 | 15 | 3,8 | 13 | M 4x0,7 | 18,8 | | 6 | 6 | 6 | 6 |
| 5007/4/20 | 20 | 3,8 | 13 | M 4x0,7 | 23,8 | | | 6 | 5 6 | |
| 5007/5/10 | 10 | 3,8 | 13 | M 5x0,8 | 13,8 | | | 6 | 6 | |
| 5007/5/15 | 15 | 3,8 | 13 | M 5x0,8 | 18,8 | | | 6 | 6 | 6 |
| 5007/5/20 | 20 | 3,8 | 13 | M 5x0,8 | 23,8 | | | 6 | 6 | |
| 5007/6/10 | 10 | 3,8 | 13 | M 6x1 | 13,8 | | 11 | 6 | 6 | |
| 5007/6/13 | 13 | 3,8 | 13 | M 6x1 | 16,8 | | | 6 | 6 | |
| 5007/6/15 | 15 | 3,8 | 13 | M 6x1 | 18,8 | | | 6 | 6 | 6 |
| 5007/6/20 | 20 | 3,8 | 13 | M 6x1 | 23,8 | | | 6 | 6 | |



Materiale / Material

- 5 Nylon 66
- 6 Nylon 66 RV

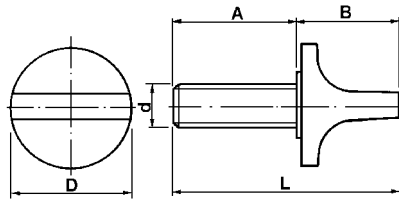
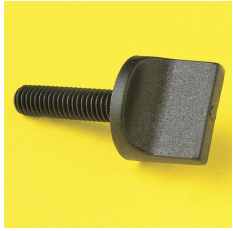
| Codice / Code | Dimensioni / Dimensions (mm) | | | | | Colore / Colour | | | |
|---------------|------------------------------|---|---|---------|----|----------------------|--------------|------------|---|
| | A | B | D | d | L | 1 Bianco White | 2 Nero Black | 4 Oro Gold | |
| 5007/2/406 | 6 | 5 | 7 | M 4x0,7 | 11 | Materiale Material → | | 6 | |
| 5007/2/410 | 10 | 5 | 7 | M 4x0,7 | 15 | | 6 | 6 | |
| 5007/2/415 | 15 | 5 | 7 | M 4x0,7 | 20 | | 6 | 6 | |
| 5007/2/420 | 20 | 5 | 7 | M 4x0,7 | 25 | | 6 | 6 | |
| 5007/2/510 | 10 | 5 | 7 | M 5x0,8 | 15 | | | 6 | 6 |
| 5007/2/515 | 15 | 5 | 7 | M 5x0,8 | 20 | | | 6 | |
| 5007/2/520 | 20 | 5 | 7 | M 5x0,8 | 25 | | | 6 | |
| 5007/2/610 | 10 | 5 | 7 | M 6x1 | 15 | | 5 6 | 6 | |
| 5007/2/613 | 13 | 5 | 7 | M 6x1 | 18 | | 6 | 6 | |
| 5007/2/615 | 15 | 5 | 7 | M 6x1 | 20 | | 6 | 6 | |
| 5007/2/620 | 20 | 5 | 7 | M 6x1 | 25 | | 6 | 6 | |





Pomelli filettati

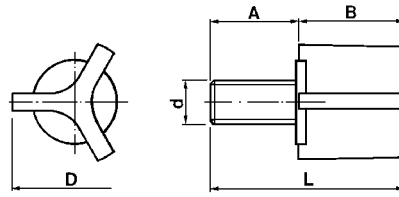
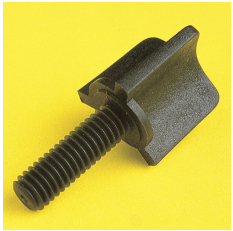
Threaded knobs



Materiale / Material

- 6** Nylon 66 RV
- 11** Policarbonato

| Codice / Code | Dimensioni / Dimensions (mm) | | | | | Colore / Colour | | |
|---------------|------------------------------|----|----|---------|----|---------------------------------|----------------|--------------|
| | A | B | D | d | L | 0 Neutro Natural | 1 Bianco White | 2 Nero Black |
| 5007/0/4/6 | 6 | 12 | 15 | M 4x0,7 | 18 | Materiale / Material → 6 | 6 | 6 |
| 5007/0/410 | 10 | 12 | 15 | M 4x0,7 | 22 | 6 | 6 | 6 |
| 5007/0/420 | 20 | 12 | 15 | M 4x0,7 | 32 | | 6 | |
| 5007/0/510 | 10 | 12 | 15 | M 5x0,8 | 22 | 6 | 6 | |
| 5007/0/520 | 20 | 12 | 15 | M 5x0,8 | 32 | 6 | 6 | 6 |
| 5007/0/610 | 10 | 12 | 15 | M 6x1 | 22 | 6 | 6 | 6 |
| 5007/0/613 | 13 | 12 | 15 | M 6x1 | 25 | 6 | 6 | 6 |
| 5007/0/615 | 15 | 12 | 15 | M 6x1 | 27 | 6 11 | 6 | 6 |
| 5007/0/620 | 20 | 12 | 15 | M 6x1 | 32 | 6 11 | 6 | 6 |



Materiale / Material

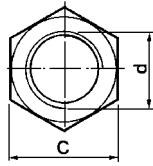
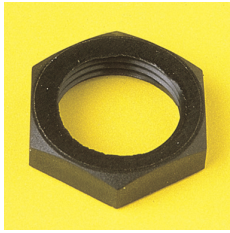
- 6** Nylon 66 RV

| Codice / Code | Dimensioni / Dimensions (mm) | | | | | Colore / Colour | |
|---------------|------------------------------|----|----|---------|----|---------------------------------|--------------|
| | A | B | D | d | L | 1 Bianco White | 2 Nero Black |
| 5007/1/4/6 | 6 | 13 | 15 | M 4x0,7 | 19 | Materiale / Material → 6 | 6 |
| 5007/1/410 | 10 | 13 | 15 | M 4x0,7 | 23 | 6 | 6 |
| 5007/1/415 | 15 | 13 | 15 | M 4x0,7 | 28 | 6 | 6 |
| 5007/1/420 | 20 | 13 | 15 | M 4x0,7 | 33 | 6 | |
| 5007/1/510 | 10 | 13 | 15 | M 5x0,8 | 23 | | 6 |
| 5007/1/515 | 15 | 13 | 15 | M 5x0,8 | 28 | | 6 |
| 5007/1/520 | 20 | 13 | 15 | M 5x0,8 | 33 | 6 | |
| 5007/1/610 | 10 | 13 | 15 | M 6x1 | 23 | 6 | 6 |
| 5007/1/613 | 13 | 13 | 15 | M 6x1 | 26 | 6 | 6 |
| 5007/1/615 | 15 | 13 | 15 | M 6x1 | 28 | | 6 |
| 5007/1/620 | 20 | 13 | 15 | M 6x1 | 33 | 6 | 6 |





Dadi (metrici) Nuts (metrical Thread)

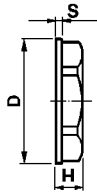
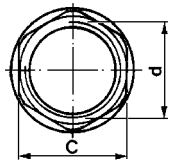


Materiale / Material

- 5 Nylon 66
- 6 Nylon 66 RV
- 11 Policarbonato

| Codice / Code | Dimensioni / Dimensions (mm) | | | Colore / Colour | | |
|---------------|------------------------------|-----------|-----|----------------------|----------------|--------------|
| | C | d | H | 0 Neutro Natural | 1 Bianco White | 2 Nero Black |
| 5355 | 8 | M 6x0,75 | 2 | Materiale Material → | 6 | 6 |
| 5357 | 12 | M 8x0,75 | 2,5 | | | 6 |
| 5345 | 14 | M 10x0,75 | 3 | | | 6 |
| 5339 | 14 | M 10x1 | 3 | 11 | 6 | 6 |
| 5339/6 | 14 | M 10x1 | 6 | | 6 | 6 |
| 5338 | 16,8 | M 13x1 | 4 | 11 | 6 | 6 |
| 5338/7 | 16,9 | M 13x1 | 7 | | | 6 |
| 5437 | 17 | M 14x1 | 4 | | | 6 |
| 5404 | 19 | M 16x1,5 | 4 | | 6 | 6 |
| 5194/18 | 25 | M 18x1 | 4,3 | | | 6 |
| 5194181524 | 24 | M 18x1,5 | 4,3 | | | 6 |
| 5194/22 | 25 | M 22x1 | 4,3 | | | 6 |
| 5194/22/15 | 25 | M 22x1,5 | 4,3 | | | 5 |

Dadi con rondella Nuts with washer



Materiale / Material

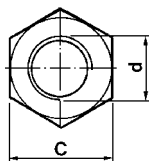
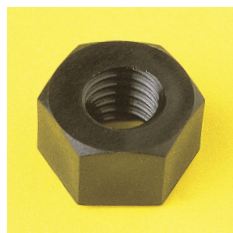
- 6 Nylon 66 RV

| Codice / Code | Dimensioni / Dimensions (mm) | | | | | Colore/Colour |
|---------------|------------------------------|------|----------|---|-----|------------------------|
| | C | D | d | H | S | 2 Nero Black |
| 5436/4 | 15 | 18 | M 12x1 | 4 | 1 | Materiale Material → 6 |
| 5437/4 | 17 | 20 | M 14x1 | 4 | 1 | 6 |
| 5484/4 | 17 | 20 | M 15x1 | 4 | 1 | 6 |
| 5517/6 | 22 | 25 | M 18x1,5 | 6 | 1 | 6 |
| 5518/6 | 30 | 34,5 | M 27x1 | 6 | 1,5 | 6 |





Dadi Nuts

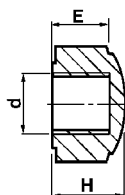
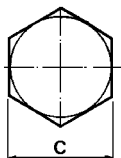


Materiale / Material

- 6** Nylon 66 RV
- 25** Polifenilensolfuro

| Codice / Code | Dimensioni / Dimensions (mm) | | | Colore / Colour | | |
|---------------|------------------------------|----------|-----|---------------------------------|----------------|--------------|
| | C | d | H | 0 Neutro Natural | 1 Bianco White | 2 Nero Black |
| 5210 | 5,5 | M 3x0,5 | 3,5 | Materiale / Material → 6 | 6 | |
| 5180 | 7 | M 4x0,7 | 4,2 | 6 | 6 | 6 |
| 5211 | 8 | M 5x0,8 | 5,2 | 6 | 6 | 6 |
| 5179 | 10 | M 6x1 | 6 | 6 | 6 | 6 |
| 5208 | 13 | M 8x1,25 | 8,3 | 6 | 6 | 6 |
| 5235 | 17 | M 10x1,5 | 10 | 6 25 | 6 | 6 |

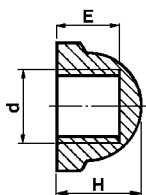
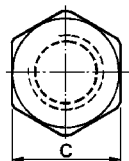
Dadi ciechi Cap nuts



Materiale / Material

- 6** Nylon 66 RV

| Codice / Code | Dimensioni / Dimensions (mm) | | | | Colore / Colour | | |
|---------------|------------------------------|----------|-----|------|------------------------|----------------|--------------|
| | C | d | E | H | 0 Neutro Natural | 1 Bianco White | 2 Nero Black |
| 5210/0 | 5,5 | M 3x0,5 | 3 | 4 | Materiale / Material → | 6 | 6 |
| 5180/0 | 7 | M 4x0,7 | 3,8 | 5,5 | 6 | 6 | 6 |
| 5211/0 | 8 | M 5x0,8 | 4,9 | 6,5 | | 6 | 6 |
| 5179/0 | 10 | M 6x1 | 5,5 | 7,5 | | 6 | 6 |
| 5208/0 | 13 | M 8x1,25 | 7,7 | 10 | | 6 | 6 |
| 5235/0 | 17 | M 10x1,5 | 10 | 12,5 | | 6 | 6 |



Materiale / Material

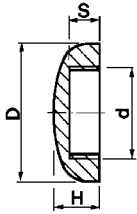
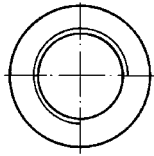
- 6** Nylon 66 RV

| Codice / Code | Dimensioni / Dimensions (mm) | | | | Colore / Colour | | |
|---------------|------------------------------|--------|---|------|---------------------------------|--------------|---------------|
| | C | d | E | H | 1 Bianco White | 2 Nero Black | 8 Grigio Grey |
| 5464/0/15 | 15 | M 10x1 | 9 | 11,5 | Materiale / Material → 6 | 6 | 6 |





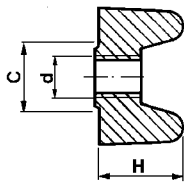
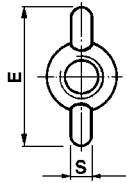
Dadi ciechi Cap nuts



Materiale / Material
6 Nylon 66 RV

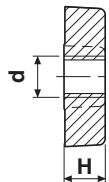
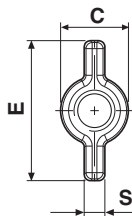
| Codice / Code | Dimensioni / Dimensions (mm) | | | | Colore / Colour | | |
|---------------|------------------------------|--------|-----|---|--------------------------|--------------|------------|
| | D | d | H | S | 1 Bianco White | 2 Nero Black | 4 Oro Gold |
| 5339/0 | 14 | M 10x1 | 5,6 | 3 | Materiale / Material → 6 | 6 | 6 |

Galletti Wing nuts



Materiale / Material
6 Nylon 66 RV

| Codice / Code | Dimensioni / Dimensions (mm) | | | | | Colore / Colour | | |
|---------------|------------------------------|----------|----|----|-----|--------------------------|----------------|--------------|
| | C | d | E | H | S | 0 Neutro Natural | 1 Bianco White | 2 Nero Black |
| 5210/2 | 5,5 | M 3x0,5 | 11 | 6 | 1,5 | Materiale / Material → 6 | 6 | 6 |
| 5180/2 | 7 | M 4x0,7 | 14 | 8 | 2 | 6 | 6 | 6 |
| 5211/2 | 8 | M 5x0,8 | 16 | 10 | 2,5 | 6 | | 6 |
| 5179/2 | 10 | M 6x1 | 20 | 12 | 3 | 6 | 6 | 6 |
| 5208/2 | 13 | M 8x1,25 | 26 | 16 | 4 | 6 | 6 | 6 |
| 5235/2 | 17 | M 10x1,5 | 34 | 20 | 5 | | | 6 |



Materiale / Material
6 Nylon 66 RV

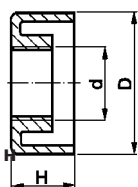
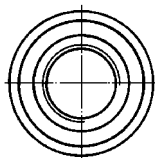
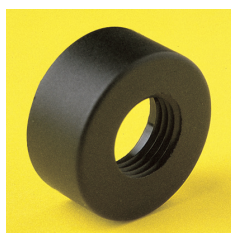
| Codice / Code | Dimensioni / Dimensions (mm) | | | | | Colore / Colour | |
|---------------|------------------------------|----------|----|----|---|--------------------------|--|
| | C | d | E | H | S | 2 Nero Black | |
| 5235/3 | 16,5 | M 10x1,5 | 34 | 10 | 5 | Materiale / Material → 6 | |





Ghiere filettate

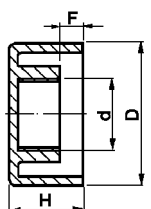
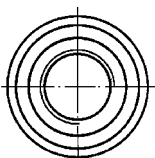
Threaded rings



Materiale / Material

- 6** Nylon 66 RV
- 18** Polibutil RV-AE

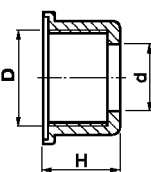
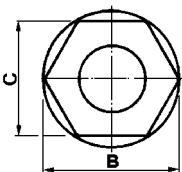
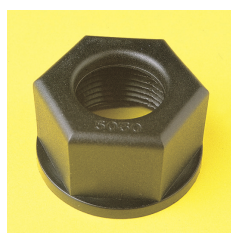
| Codice / Code | Dimensioni / Dimensions (mm) | | | Colore / Colour | |
|---------------|------------------------------|--------|-----|----------------------------------|--------------|
| | D | d | H | 1 Neutro Natural | 2 Nero Black |
| 5171 | 19 | M 10x1 | 8,5 | Materiale Material → 6 18 | 6 18 |
| 5171/10 | 19 | 10,5 | 8 | 18 | 18 |



Materiale / Material

- 6** Nylon 66 RV

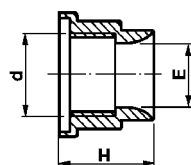
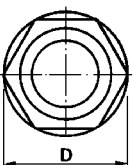
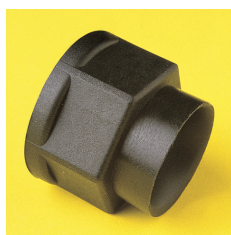
| Codice / Code | Dimensioni / Dimensions (mm) | | | | Colore / Colour | |
|---------------|------------------------------|--------|---|------|-------------------------------|--------------|
| | D | d | F | H | 1 Bianco White | 2 Nero Black |
| 5171/0 | 19 | M 10x1 | 3 | 9,5 | Materiale Material → 6 | 6 |
| 5464 | 20 | M 10x1 | 0 | 10,5 | 6 | 6 |



Materiale / Material

- 6** Nylon 66 RV

| Codice / Code | Dimensioni / Dimensions (mm) | | | | | Colore / Colour | |
|---------------|------------------------------|----|--------|----|----|-------------------------------|--------------|
| | B | C | D | d | H | 1 Bianco White | 2 Nero Black |
| 5030/2 | 42 | 36 | M 30x2 | 20 | 24 | Materiale Material → 6 | 6 |



Materiale / Material

- 6** Nylon 66 RV

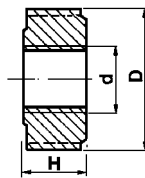
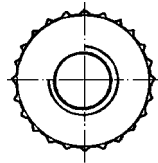
| Codice / Code | Dimensioni / Dimensions (mm) | | | | Colore / Colour | |
|---------------|------------------------------|----------|------|------|-------------------------------|--------------|
| | D | d | E | H | 1 Bianco White | 2 Nero Black |
| 5388 | 21 | M 13x1 | 10,5 | 16 | Materiale Material → 6 | 6 |
| 5023/2/15 | 27 | M 18x1,5 | 14,5 | 21,5 | 6 | 6 |





Ghiere filettate

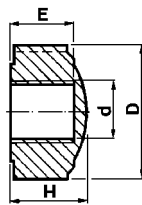
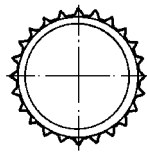
Threaded rings



Materiale / Material

- 6** Nylon 66 RV
- 11** Policarbonato

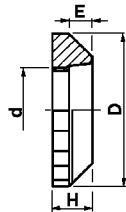
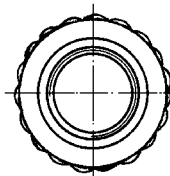
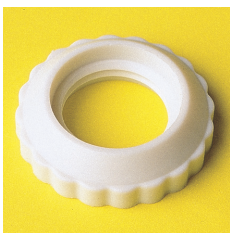
| Codice / Code | Dimensioni / Dimensions (mm) | | | Colore / Colour | | |
|---------------|------------------------------|------|-----|----------------------|----------------|--------------|
| | d | D | H | 0 Neutro Natural | 1 Bianco White | 2 Nero Black |
| 5210/1 | M 3x0,5 | 8 | 3,5 | Materiale Material → | 6 | 6 |
| 5180/1 | M 4x0,7 | 10 | 4,2 | 11 | 6 | 6 |
| 5211/1 | M 5x0,8 | 13 | 5,2 | | 6 | 6 |
| 5179/1 | M 6x1 | 12,5 | 6 | | 6 | 6 |
| 5208/1 | M 8x1,25 | 17,5 | 8,3 | | 6 | 6 |
| 5235/1 | M 10x1,5 | 21,5 | 10 | | 6 | 6 |



Materiale / Material

- 6** Nylon 66 RV

| Codice / Code | Dimensioni / Dimensions (mm) | | | | Colore / Colour | | |
|---------------|------------------------------|----------|-----|------|----------------------|----------------|--------------|
| | D | d | E | H | 0 Neutro Natural | 1 Bianco White | 2 Nero Black |
| 5210/0/1 | 8 | M 3x0,5 | 3 | 4 | Materiale Material → | 6 | 6 |
| 5180/0/1 | 10 | M 4x0,7 | 3,8 | 5,5 | 6 | 6 | 6 |
| 5211/0/1 | 13 | M 5x0,8 | 4,9 | 6,5 | | 6 | 6 |
| 5179/0/1 | 12,5 | M 6x1 | 5,5 | 7,5 | | 6 | 6 |
| 5208/0/1 | 17,5 | M 8x1,25 | 7,7 | 10 | | 6 | 6 |
| 5235/0/1 | 21,5 | M 10x1,5 | 10 | 12,5 | | 6 | 6 |



Materiale / Material

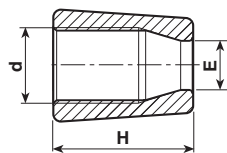
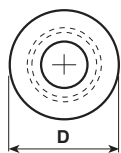
- 6** Nylon 66 RV
- 19** Polifenilensolfuro RVM

| Codice / Code | Dimensioni / Dimensions (mm) | | | | Colore / Colour | | |
|---------------|------------------------------|----------|-----|---|----------------------|--------------|--------------|
| | D | d | E | H | 0 Neutro Natural | 1 Nero Black | 2 Nero Black |
| 5404/1 | 27 | M 16x1,5 | 3 | 7 | Materiale Material → | 6 | 6 |
| 5478 | 29 | M 20x2 | 5,5 | 7 | 19 | | |





Ghiere filettate Threaded rings

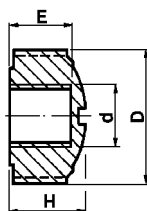
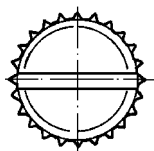
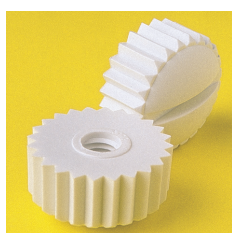


Materiale / Material

6 Nylon 66 RV

11 Polycarbonato

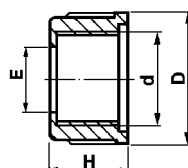
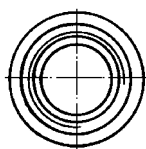
| Codice / Code | Dimensioni / Dimensions (mm) | | | | Colore / Colour | | | |
|---------------|------------------------------|--------|-----|------|----------------------------------|----------------|--------------|------------|
| | D | d | E | H | 0 Neutro Natural | 1 Bianco White | 2 Nero Black | 4 Oro Gold |
| 5905-5905/A | 14,8 | M 10x1 | 7,1 | 18,5 | Materiale / Material → 11 | 6 | 6 | 6 |



Materiale / Material

6 Nylon 66 RV

| Codice / Code | Dimensioni / Dimensions (mm) | | | | Colore / Colour | | | |
|---------------|------------------------------|-------|---|----|---------------------------------|--|--|--|
| | D | d | E | H | 1 Bianco White | | | |
| 5235/2/179 | 21,5 | M 6x1 | 6 | 12 | Materiale / Material → 6 | | | |



Materiale / Material

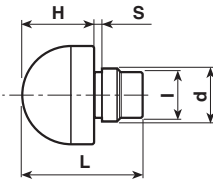
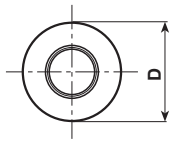
6 Nylon 66 RV

| Codice / Code | Dimensioni / Dimensions (mm) | | | | Colore / Colour | | | |
|---------------|------------------------------|--------|---|-----|---------------------------------|--------------|--|--|
| | D | d | E | H | 1 Bianco White | 2 Nero Black | | |
| 5155 | 13,5 | M 10x1 | 7 | 8,5 | Materiale / Material → 6 | 6 | | |



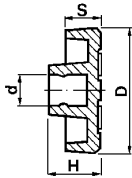
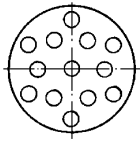


Piedini Feet



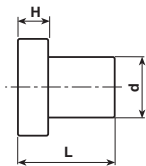
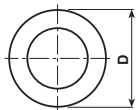
Materiale / Material
1 PVC

| Codice / Code | Dimensioni / Dimensions (mm) | | | | | | Colore / Colour | |
|---------------|------------------------------|---|-----|---|----|---|--------------------------|--------------|
| | D | d | H | l | L | S | 1 Bianco White | 2 Nero Black |
| 6505/7 | 13 | 7 | 9,5 | 6 | 16 | 1 | Materiale / Material → 1 | 1 |
| 6505/9 | 13 | 9 | 9,5 | 8 | 16 | 1 | | 1 |



Materiale / Material
5 Nylon 66

| Codice / Code | Dimensioni / Dimensions (mm) | | | | Colore / Colour | |
|---------------|------------------------------|-----|-----|-----|--------------------------|--------------|
| | D | d | H | S | 1 Bianco White | 2 Nero Black |
| 5333/2 | 20 | 5,1 | 8,5 | 5,5 | Materiale / Material → 5 | 5 |



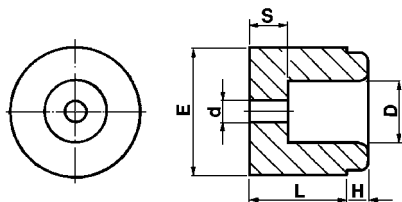
Materiale / Material
1 PVC

| Codice / Code | Dimensioni / Dimensions (mm) | | | | Colore / Colour | |
|---------------|------------------------------|---|-----|----|------------------------|--------------|
| | D | d | H | L | 1 Bianco White | 2 Nero Black |
| 6500/6 | 8 | 5 | 2,5 | 6 | Materiale / Material → | 1 |
| 6500/8 | 8 | 5 | 2,5 | 8 | | 1 |
| 6500/10 | 8 | 5 | 2,5 | 10 | 1 | 1 |
| 6501/8 | 8 | 6 | 2,5 | 8 | | 1 |
| 6501/10 | 8 | 6 | 2,5 | 10 | 1 | 1 |
| 6506/10 | 10 | 8 | 3 | 12 | | 1 |
| 6503 | 12 | 8 | 2 | 7 | 1 | 1 |



Piedini

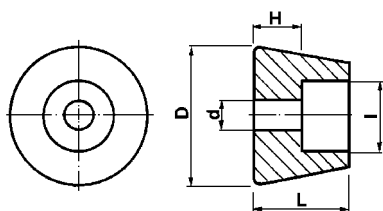
Feet



Materiale / Material

1 PVC

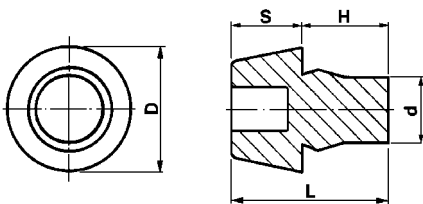
| Codice / Code | Dimensioni / Dimensions (mm) | | | | | | Colore / Colour | |
|---------------|------------------------------|---|----|---|----|---|-----------------|-----------------|
| | D | d | E | H | L | S | 1 | 2 |
| 6315/4/22 | 11,5 | 4 | 24 | 4 | 18 | 7 | 1 | 2 Nero Black |



Materiale / Material

1 PVC
5 Nylon 66
6 Nylon 66 RV

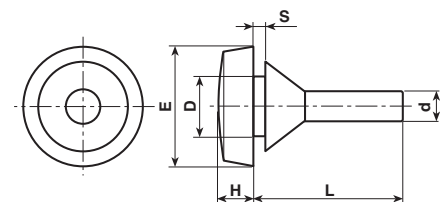
| Codice / Code | Dimensioni / Dimensions (mm) | | | | | Colore / Colour | | |
|---------------|------------------------------|-----|-----|-----|-----|----------------------|-------------------|-----------------|
| | D | d | H | I | L | 0 | 1 | 2 |
| 6512/3 | 19 | 3 | 6,5 | 9,5 | 13 | 0 Neutro Natural | 1 Bianco White | 2 Nero Black |
| 6512/4 | 19 | 4 | 6,5 | 9,5 | 13 | Materiale Material → | 1 | 1 |
| 5018 | 11 | 3,5 | 2 | 6 | 6,5 | 6 | | 6 |
| 5018/13 | 11 | 3,5 | 2 | 6 | 10 | | 5 | 6 |
| 5030/4 | 15 | 6 | 2 | 10 | 6 | | | 6 |



Materiale / Material

0 Polietilene
1 PVC

| Codice/Code | Dimensioni / Dimensions (mm) | | | | | Colore / Colour | | |
|-------------|------------------------------|---|---|----|----|----------------------|-------------------|-----------------|
| | D | d | H | L | S | 0 | 1 | 2 |
| 5239 | 10 | 6 | 9 | 12 | 3 | 0 Neutro Natural | 1 Bianco White | 2 Nero Black |
| 5452 | 11 | 6 | 8 | 14 | 6 | Materiale Material → | 1 | 1 |
| 5476 | 14 | 8 | 8 | 18 | 10 | | | 1 |



Materiale / Material

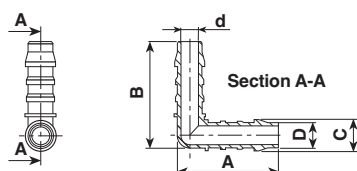
1 PVC

| Codice / Code | Dimensioni / Dimensions (mm) | | | | | | Colore / Colour | |
|---------------|------------------------------|---|----|-----|----|-----|-------------------|-----------------|
| | D | d | E | H | L | S | 1 | 2 |
| 6304 | 6 | 3 | 12 | 3,5 | 15 | 1,2 | 1 Bianco White | 2 Nero Black |





Raccordo 90° Union elbow 90°

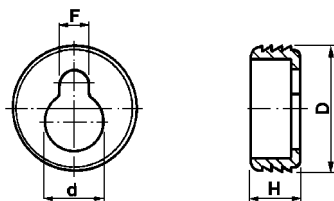


Materiale / Material

6 Nylon 66 RV

| Codice / Code | Dimensioni / Dimensions (mm) | | | | | Colore / Colour |
|---------------|------------------------------|----|-----|---|-----|--|
| | A | B | C | D | d | |
| 5583 | 34 | 33 | 9,9 | 8 | 5,7 | 0 Neutro Natural Materiale / Material → 6 |

Attacchi a parete Wall fixing

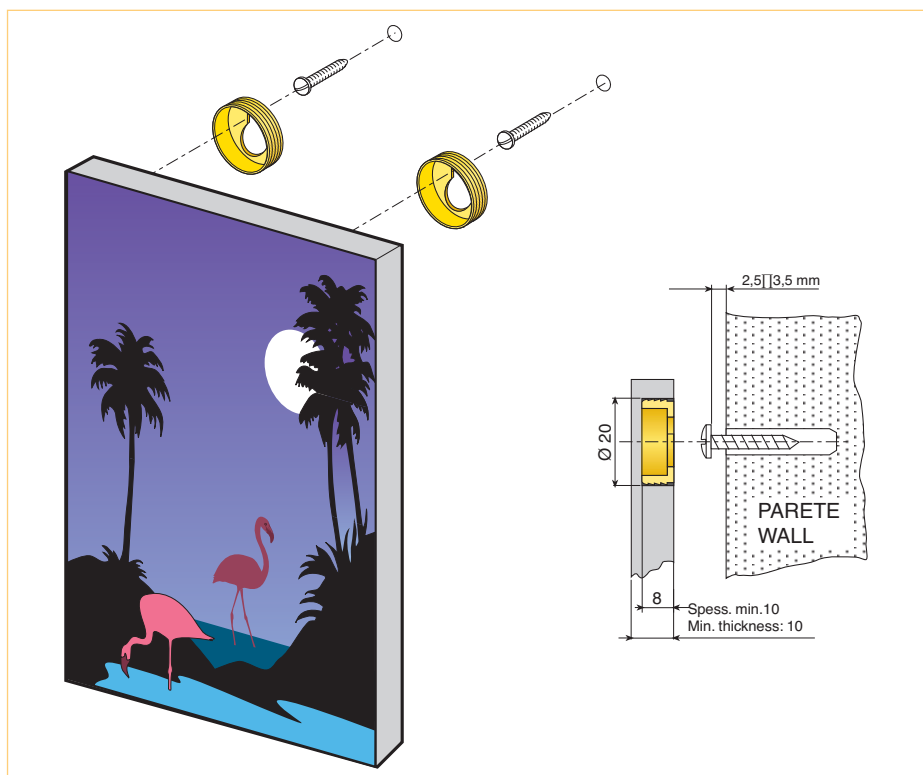


Materiale / Material

6 Nylon 66 RV

| Codice / Code | Dimensioni / Dimensions (mm) | | | | Colore / Colour |
|---------------|------------------------------|-----|---|---|--|
| | D | d | F | H | |
| 5483 | 20 | 9,4 | 5 | 8 | 1 Bianco White Materiale / Material → 6 |

Esempio di utilizzazione Application example





Indice per codice

Code index



| CODICE CODE | pag. page | CODICE CODE | pag. page | CODICE CODE | pag. page | CODICE CODE | pag. page | CODICE CODE | pag. page | CODICE CODE | pag. page |
|----------------|--------------|----------------|--------------|----------------|--------------|----------------|--------------|----------------|--------------|----------------|--------------|
| 005337/29/65 | 63 | 5007/2/410 | 151 | 5016/7 | 95 | 5021/35/5 | 137 | 5068/15 | 149 | 5100/7/109 | 68 |
| 005350/29/16 | 63 | 5007/2/415 | 151 | 5016/10 | 95 | 5021/35/6 | 137 | 5069 | 67 | 5100/7/114 | 68 |
| 005446/3/158 | 63 | 5007/2/420 | 151 | 5016/15 | 95 | 5021/35/7 | 137 | 5069/0 | 67 | 5101 | 45 |
| 005448/31380 | 63 | 5007/2/510 | 151 | 5016/20 | 95 | 5023/2/15 | 156 | 5069/0/2 | 67 | 5101/5 | 45 |
| 005459/31180 | 63 | 5007/2/515 | 151 | 5016/25 | 95 | 5024/2/15 | 116 | 5069/2 | 67 | 5101/V | 45 |
| 005447/2///8 | 87 | 5007/2/520 | 151 | 5016/30 | 95 | 5024/28/15 | 116 | 5069/7 | 67 | 5104 | 45 |
| 005504/3/980 | 63 | 5007/2/610 | 151 | 5016/35 | 95 | 5026 | 142 | 5070/10 | 137 | 5104/1 | 45 |
| 005527/292582 | 63 | 5007/2/613 | 151 | 5016/2/7 | 96 | 5030 | 116 | 5070/15 | 138 | 5104/3/6 | 46 |
| 005625/41530 | 26 | 5007/2/615 | 151 | 5016/2/10 | 96 | 5030/2 | 156 | 5070/20 | 138 | 5105 | 45 |
| | 31 | 5007/2/620 | 151 | 5016/2/15 | 96 | 5030/20 | 150 | 5070/25 | 138 | 5107/0/7 | 93 |
| 005625/41682 | 63 | 5007/4/6 | 151 | 5016/2/20 | 96 | 5030/4 | 160 | 5074 | 146 | 5107/0/10 | 93 |
| 005625/3/427 | 24 | 5007/4/10 | 151 | 5016/2/25 | 96 | 5035 | 142 | 5074/4 | 146 | 5107/0/15 | 93 |
| 005630/22513 | 28 | 5007/4/15 | 151 | 5016/2/30 | 96 | 5035/13 | 142 | 5074/8 | 146 | 5107/0/20 | 93 |
| 005633/32522 | 29 | 5007/4/20 | 151 | 5016/2/35 | 96 | 5036/3/5/1 | 140 | 5074/10 | 146 | 5107/0/30 | 93 |
| 005637/2965 | 63 | 5007/5/10 | 151 | 5016/3/07 | 91 | 5036/3/5/2 | 140 | 5074/15 | 146 | 5107/0/35 | 93 |
| 5007/0/4/6 | 152 | 5007/5/15 | 151 | 5016/3/010 | 91 | 5036/3/5/3 | 140 | 5074/20 | 146 | 5107/0/207 | 94 |
| 5007/0/410 | 152 | 5007/5/20 | 151 | 5016/3/015 | 91 | 5036/3/5/4 | 137 | 5074/3/6 | 149 | 5107/0/210 | 94 |
| 5007/0/420 | 152 | 5007/6/10 | 151 | 5016/3/020 | 91 | 5036/3/5/5 | 137 | 5074/3/8 | 149 | 5107/0/215 | 94 |
| 5007/0/510 | 152 | 5007/6/13 | 151 | 5016/3/025 | 91 | 5036/5/1 | 140 | 5074/3/10 | 149 | 5107/0/ 220 | 94 |
| 5007/0/520 | 152 | 5007/6/15 | 151 | 5016/3/035 | 91 | 5036/5/1/5 | 140 | 5074/4/4 | 149 | 5107/0/230 | 94 |
| 5007/0/610 | 152 | 5007/6/20 | 151 | 5016/3/7 | 93 | 5036/5/2 | 140 | 5074/4/6 | 149 | 5107/7 | 94 |
| 5007/0/613 | 152 | 5007/6/610 | 144 | 5016/3/10 | 93 | 5036/5/3 | 140 | 5074/4/8 | 149 | 5107/10 | 94 |
| 5007/0/615 | 152 | 5007/6/613 | 144 | 5016/3/15 | 93 | 5036/5/4 | 137 | 5074/4/10 | 149 | 5107/15 | 94 |
| 5007/0/620 | 152 | 5007/6/615 | 144 | 5016/3/20 | 93 | 5036/5/5 | 137 | 5074/4/4/2 | 149 | 5107/20 | 94 |
| 5007/02410 | 145 | 5007/6/620 | 144 | 5016/3/25 | 93 | 5036/6/1 | 141 | 5074/4/6/2 | 149 | 5107/25 | 94 |
| 5007/02415 | 145 | 5007/6/820 | 144 | 5016/3/30 | 93 | 5036/6/2 | 141 | 5074/4/8/2 | 149 | 5107/30 | 94 |
| 5007/02420 | 145 | 5007/7/410 | 148 | 5016/3/35 | 93 | 5036/6/3 | 141 | 5074/410/2 | 149 | 5107/35 | 94 |
| 5007/02510 | 145 | 5007/7/415 | 148 | 5016/3/2/7 | 92 | 5036/7/1 | 141 | 5074/416/2 | 149 | 5107/2/10 | 91 |
| 5007/02515 | 145 | 5007/7/420 | 148 | 5016/3/210 | 92 | 5036/7/2 | 141 | 5074/8/4 | 146 | 5107/2/15 | 91 |
| 5007/02520 | 145 | 5007/7/510 | 148 | 5016/3/215 | 92 | 5036/7/3 | 141 | 5074/10/4 | 146 | 5107/2/20 | 91 |
| 5007/02610 | 145 | 5007/7/515 | 148 | 5016/3/220 | 92 | 5036/7/4 | 138 | 5077 | 107 | 5107/2/25 | 91 |
| 5007/02613 | 145 | 5007/7/520 | 148 | 5016/3/225 | 92 | 5036/7/5 | 138 | 5077/0 | 107 | 5107/2/30 | 91 |
| 5007/02615 | 145 | 5007/7/610 | 148 | 5016/3/230 | 92 | 5036/8/1 | 141 | 5081 | 107 | 5107/2/35 | 91 |
| 5007/02620 | 145 | 5007/7/613 | 148 | 5016/3/235 | 92 | 5036/8/2 | 141 | 5085 | 141 | 5109/2 | 140 |
| 5007/03410 | 145 | 5007/7/615 | 148 | 5016/302/7 | 92 | 5036/8/3 | 141 | 5088 | 149 | 5110 | 52 |
| 5007/03415 | 145 | 5007/7/620 | 148 | 5016/302/10 | 92 | 5036/8/4 | 138 | 5088/4/08 | 149 | 5111 | 136 |
| 5007/03420 | 145 | 5008 | 45 | 5016/302/15 | 92 | 5036/8/5 | 138 | 5088/4/11 | 149 | 5114/1 | 141 |
| 5007/03510 | 145 | 5015/4/1 | 140 | 5016/302/20 | 92 | 5037 | 45 | 5088/11 | 149 | 5114/2 | 141 |
| 5007/03515 | 145 | 5015/4/2 | 140 | 5016/302/25 | 92 | 5037/0 | 45 | 5092 | 142 | 5114/3 | 141 |
| 5007/03520 | 145 | 5015/4/3 | 140 | 5016/302/30 | 92 | 5037/3 | 45 | 5098 | 140 | 5114/5 | 139 |
| 5007/03610 | 145 | 5015/4/4 | 137 | 5016/302/35 | 92 | 5037/V | 45 | 5098/36/1 | 140 | 5114/10 | 139 |
| 5007/03615 | 145 | 5015/4/5 | 137 | 5018 | 160 | 5038 | 45 | 5098/36/12 | 140 | 5115 | 45 |
| 5007/03620 | 145 | 5015/6/1 | 140 | 5018/13 | 160 | 5040 | 142 | 5098/36/2 | 140 | 5117 | 49 |
| 5007/1/4/6 | 152 | 5015/6/2 | 140 | 5019/14 | 150 | 5040/8 | 142 | 5098/36/3 | 140 | 5124 | 141 |
| 5007/1/410 | 152 | 5015/6/3 | 140 | 5020 | 116 | 5040/13 | 142 | 5100/6/5 | 69 | 5125 | 96 |
| 5007/1/415 | 152 | 5015/6/4 | 138 | 5020/7 | 116 | 5050 | 52 | 5100/6/10 | 70 | 5125/15 | 96 |
| 5007/1/420 | 152 | 5015/6/5 | 138 | 5021/1 | 140 | 5052 | 43 | 5100/6/15 | 70 | 5125/3/510 | 96 |
| 5007/1/510 | 152 | 5016/0/7 | 95 | 5021/2 | 140 | 5062 | 130 | 5100/6/20 | 70 | 5126 | 116 |
| 5007/1/515 | 152 | 5016/0/10 | 95 | 5021/3 | 137 | 5068/03/6 | 149 | 5100/6/25 | 70 | 5127 | 68 |
| 5007/1/520 | 152 | 5016/0/15 | 95 | 5021/4 | 137 | 5068/03/8 | 149 | 5100/6/30 | 70 | 5128 | 142 |
| 5007/1/610 | 152 | 5016/0/20 | 95 | 5021/5 | 137 | 5068/03/10 | 149 | 5100/6/35 | 70 | 5129 | 142 |
| 5007/1/613 | 152 | 5016/0/25 | 95 | 5021/35/1 | 140 | 5068/03/15 | 149 | 5100/6518 | 69 | 5130 | 142 |
| 5007/1/615 | 152 | 5016/0/30 | 95 | 5021/35/2 | 140 | 5068/6 | 149 | 5100/7/05 | 69 | 5133 | 142 |
| 5007/1/620 | 152 | 5016/0/35 | 95 | 5021/35/3 | 137 | 5068/8 | 149 | 5100/7/08 | 69 | 5137 | 142 |
| 5007/2/406 | 151 | 5016/0/210 | 96 | 5021/35/4 | 137 | 5068/10 | 149 | 5100/7/11 | 69 | 5140 | 142 |





Indice per codice

Code index

| CODICE CODE | pag. page | CODICE CODE | pag. page | CODICE CODE | pag. page | CODICE CODE | pag. page | CODICE CODE | pag. page | CODICE CODE | pag. page |
|----------------|--------------|----------------|--------------|----------------|--------------|----------------|--------------|----------------|--------------|----------------|--------------|
| 5141 | 45 | 5178/1/15 | 146 | 5183/5/10 | 148 | 5229/127 | 137 | 5302/2 | 141 | 5323/2/10 | 133 |
| 5146/1 | 141 | 5178/1/20 | 146 | 5183/5/15 | 148 | 5229/15 | 137 | 5302/3 | 141 | 5323/3/4 | 133 |
| 5146/2 | 141 | 5178/1/25 | 146 | 5183/5/20 | 148 | 5229/19 | 137 | 5302/4 | 138 | 5323/3/5 | 133 |
| 5146/3 | 141 | 5178/1/30 | 146 | 5183/5/25 | 148 | 5229/20 | 137 | 5302/5 | 138 | 5323/3/6 | 133 |
| 5146/5 | 139 | 5178/1/35 | 146 | 5183/5/35 | 148 | 5229/25 | 137 | 5302/10 | 138 | 5323/3/7 | 133 |
| 5146/8 | 139 | 5178/10 | 147 | 5189 | 46 | 5229/30 | 137 | 5302/1536 | 140 | 5323/3/8 | 133 |
| 5146/10 | 139 | 5178/12 | 147 | 5190/4 | 55 | 5229/35 | 137 | 5302/1537 | 140 | 5323/3/10 | 133 |
| 5146/15 | 139 | 5178/15 | 147 | 5190/10 | 55 | 5230 | 52 | 5302/1564 | 141 | 5323/4/5 | 133 |
| 5146/18 | 139 | 5178/20 | 147 | 5190/13 | 55 | 5235 | 154 | 5302/4/2 | 140 | 5323/4/6 | 133 |
| 5146/20 | 139 | 5178/25 | 147 | 5190/0/4 | 55 | 5235/0 | 154 | 5302/4/3 | 140 | 5323/4/7 | 133 |
| 5148 | 45 | 5178/30 | 147 | 5190/0/10 | 55 | 5235/0/1 | 157 | 5302/4/15 | 140 | 5323/4/10 | 133 |
| 5149 | 45 | 5178/35 | 147 | 5190/0/13 | 55 | 5235/1 | 157 | 5312 | 118 | 5323/5/7 | 133 |
| 5150 | 99 | 5178/4/10 | 148 | 5190/04/80 | 55 | 5235/2 | 155 | 5313/8 | 107 | 5323/5/9 | 133 |
| 5150/0 | 99 | 5178/4/15 | 148 | 5190/10/80 | 55 | 5235/2/179 | 158 | 5315 | 136 | 5323/5/10 | 133 |
| 5150/2 | 99 | 5178/4/20 | 148 | 5190/13/80 | 55 | 5235/3 | 155 | 5316 | 136 | 5329/10 | 51 |
| 5150/7 | 99 | 5178/4/25 | 148 | 5193 | 104 | 5239 | 160 | 5318/1 | 104 | 5329/15 | 51 |
| 5155 | 158 | 5178/4/30 | 148 | 5194/18 | 153 | 5251 | 51 | 5319/42 | 101 | 5332/9 | 49 |
| 5160/12 | 130 | 5178/4/35 | 148 | 5194/22 | 153 | 5251/0 | 51 | 5321/6 | 126 | 5332/12 | 49 |
| | 136 | 5179 | 154 | 5194/22/15 | 153 | 5253 | 123 | 5321/9 | 126 | 5332/15 | 49 |
| 5160/23 | 130 | 5179/0 | 154 | 5194181524 | 153 | 5260 | 99 | 5321/12 | 126 | 5332/20 | 49 |
| | 136 | 5179/0/1 | 157 | 5208 | 154 | 5261 | 99 | 5321/15 | 126 | 5332/25 | 49 |
| 5160/40 | 130 | 5179/1 | 157 | 5208/0 | 154 | 5274 | 39 | 5321/19 | 126 | 5333/2 | 159 |
| | 136 | 5179/2 | 155 | 5208/0/1 | 157 | 5274/4 | 39 | 5321/22 | 126 | 5333/10 | 98 |
| 5167/1/20 | 146 | 5180 | 154 | 5208/1 | 157 | 5284 | 45 | 5321/18/6 | 126 | 5333/13 | 98 |
| 5167/1/25 | 146 | 5180/0 | 154 | 5208/2 | 155 | 5284/5 | 123 | 5321/18/9 | 126 | 5336/8 | 106 |
| 5167/1/30 | 146 | 5180/0/1 | 157 | 5208/8 | 85 | 5290 | 33 | 5321/18/12 | 126 | 5336/15 | 44 |
| 5167/1/35 | 146 | 5180/1 | 157 | 5210 | 154 | 5290/0 | 33 | 5321/18/15 | 126 | 5336/5/5 | 44 |
| 5167/20 | 147 | 5180/2 | 155 | 5210/0 | 154 | 5290/90 | 36 | 5321/18/19 | 126 | 5337/1/10 | 66 |
| 5167/25 | 147 | 5182/1/15 | 146 | 5210/0/1 | 157 | 5290/100 | 36 | 5321/18/22 | 126 | 5337/1/13 | 66 |
| 5167/30 | 147 | 5182/1/20 | 146 | 5210/1 | 157 | 5290/300 | 36 | 5322/2 | 63 | 5337/3/10 | 38 |
| 5167/35 | 147 | 5182/1/25 | 146 | 5210/2 | 155 | 5293 | 107 | 5322/10 | 63 | 5337/3/13 | 38 |
| 5171 | 156 | 5182/1/30 | 146 | 5211 | 154 | 5295/13 | 86 | 5323/0/1/2 | 135 | 5338 | 153 |
| 5171/0 | 156 | 5182/1/35 | 146 | 5211/0 | 154 | 5295/16 | 86 | 5323/0/1/3 | 135 | 5338/7 | 153 |
| 5171/10 | 156 | 5182/15 | 147 | 5211/0/1 | 157 | 5300/6/1 | 141 | 5323/0/1/4 | 135 | 5339 | 153 |
| 5172 | 43 | 5182/20 | 147 | 5211/1 | 157 | 5300/6/2 | 141 | 5323/0/1/5 | 135 | 5339/0 | 155 |
| 5176 | 66 | 5182/25 | 147 | 5211/2 | 155 | 5300/6/3 | 141 | 5323/0/2/3 | 135 | 5339/6 | 153 |
| 5177/1/7 | 146 | 5182/30 | 147 | 5212/50 | 123 | 5300/8/1 | 141 | 5323/0/2/4 | 135 | 5342 | 99 |
| 5177/1/10 | 146 | 5182/35 | 147 | 5218/0/5 | 85 | 5300/8/2 | 141 | 5323/0/2/5 | 135 | 5345 | 153 |
| 5177/1/12 | 146 | 5183/1/6 | 146 | 5218/0/6 | 85 | 5300/8/3 | 141 | 5323/0/3/5 | 135 | 5346 | 66 |
| 5177/1/20 | 146 | 5183/1/10 | 146 | 5218/0/8 | 85 | 5300/8/4 | 139 | 5323/1/2 | 133 | 5346/07 | 68 |
| 5177/1/25 | 146 | 5183/1/15 | 146 | 5218/5 | 85 | 5300/8/5 | 139 | 5323/1/3 | 133 | 5346/11 | 68 |
| 5177/1/30 | 146 | 5183/1/20 | 146 | 5218/6 | 85 | 5300/10/1 | 141 | 5323/1/4 | 133 | 5346/20 | 68 |
| 5177/7 | 147 | 5183/1/25 | 146 | 5218/8 | 85 | 5300/10/2 | 141 | 5323/1/5 | 133 | 5346/2/09 | 116 |
| 5177/10 | 147 | 5183/1/30 | 146 | 5219/5/6 | 85 | 5300/10/3 | 141 | 5323/1/6 | 133 | 5347 | 150 |
| 5177/12 | 147 | 5183/1/35 | 146 | 5219/5/8 | 85 | 5300/10/4 | 139 | 5323/1/7 | 133 | 5348/8 | 106 |
| 5177/15 | 147 | 5183/25/6 | 149 | 5219/5/10 | 85 | 5300/10/5 | 139 | 5323/1/8 | 133 | 5349 | 40 |
| 5177/20 | 147 | 5183/25/10 | 149 | 5219/6/10 | 85 | 5301/1 | 140 | 5323/1/9 | 133 | 5350/0 | 35 |
| 5177/25 | 147 | 5183/25/15 | 149 | 5220/1/6 | 86 | 5301/2 | 140 | 5323/1/10 | 133 | 5350/2 | 35 |
| 5177/30 | 147 | 5183/10 | 147 | 5220/6 | 86 | 5301/3 | 140 | 5323/2/3 | 133 | 5350/3 | 35 |
| 5177/6/12 | 148 | 5183/15 | 147 | 5221 | 99 | 5301/34/1 | 140 | 5323/2/4 | 133 | 5350/1/0 | 35 |
| 5177/6/20 | 148 | 5183/20 | 147 | 5227 | 66 | 5301/34/2 | 140 | 5323/2/5 | 133 | 5350/1/2 | 35 |
| 5177/6/25 | 148 | 5183/25 | 147 | 5228 | 52 | 5301/34/3 | 140 | 5323/2/6 | 133 | 5350/1/3 | 35 |
| 5177/6/30 | 148 | 5183/30 | 147 | 5229/5 | 137 | 5301/4 | 137 | 5323/2/7 | 133 | 5351 | 150 |
| 5178/1/10 | 146 | 5183/35 | 147 | 5229/8 | 137 | 5301/5 | 137 | 5323/2/8 | 133 | 5351/11 | 150 |
| 5178/1/12 | 146 | 5183/5/6 | 148 | 5229/10 | 137 | 5302/1 | 141 | 5323/2/9 | 133 | 5352 | 122 |



Indice per codice

Code index



| CODICE CODE | pag. page | CODICE CODE | pag. page | CODICE CODE | pag. page | CODICE CODE | pag. page | CODICE CODE | pag. page | CODICE CODE | pag. page |
|----------------|--------------|----------------|--------------|----------------|--------------|----------------|--------------|----------------|--------------|----------------|--------------|
| 5352/3 | 122 | 5370/9 | 127 | 5400/13/7 | 139 | 5439/10/3/4 | 124 | 5472/10 | 97 | 5514/7/10 | 47 |
| 5354 | 142 | 5370/12 | 127 | 5400/13/8 | 139 | 5442 | 105 | 5472/15 | 97 | 5515/05 | 140 |
| 5355 | 153 | 5370/15 | 127 | 5400/16/1 | 141 | 5444/07 | 49 | 5472/20 | 97 | 5515/1 | 140 |
| 5356 | 122 | 5370/19 | 127 | 5400/16/2 | 141 | 5444/09 | 49 | 5472/25 | 97 | 5515/2 | 140 |
| 5357 | 153 | 5370/22 | 127 | 5400/16/3 | 141 | 5444/12 | 49 | 5472/30 | 97 | 5515/3 | 137 |
| 5359/6 | 127 | 5372/6 | 128 | 5400/16/4 | 139 | 5444/15 | 49 | 5472/35 | 97 | 5515/5 | 137 |
| 5359/9 | 127 | 5372/9 | 128 | 5400/16/5 | 139 | 5444/18 | 49 | 5472/56 | 82 | 5515/10 | 137 |
| 5359/12 | 127 | 5372/12 | 128 | 5400/16/6 | 139 | 5444/23 | 49 | 5472/4/30 | 82 | 5516/05 | 140 |
| 5359/15 | 127 | 5372/15 | 128 | 5400/16/7 | 139 | 5446/1 | 87 | 5472/6/10 | 44 | 5516/1 | 140 |
| 5359/19 | 127 | 5372/19 | 128 | 5400/16/8 | 139 | 5446/1/13 | 89 | 5474/32 | 80 | 5516/2 | 140 |
| 5359/22 | 127 | 5372/22 | 128 | 5404 | 153 | 5446/1/18 | 89 | 5474/50 | 80 | 5516/3 | 137 |
| 5359/4/6 | 127 | 5372/18/6 | 128 | 5404/1 | 157 | 5446/1/180 | 87 | 5475/05 | 95 | 5516/5 | 137 |
| 5359/4/9 | 127 | 5372/18/9 | 128 | 5407/1 | 50 | 5446/18/90 | 88 | 5475/07 | 95 | 5516/10 | 137 |
| 5359/4/12 | 127 | 5372/18/12 | 128 | 5407/2 | 50 | 5446/2/90 | 88 | 5475/3/05 | 93 | 5517/6 | 153 |
| 5359/4/15 | 127 | 5372/18/15 | 128 | 5408/10 | 149 | 5446/90 | 88 | 5475/3/07 | 93 | 5518/6 | 153 |
| 5359/4/22 | 127 | 5372/18/19 | 128 | 5408/15 | 149 | 5447/1 | 87 | 5476 | 160 | 5519/17/2 | 147 |
| 5360 | 38 | 5372/18/22 | 128 | 5408/4/10 | 149 | 5447/13 | 87 | 5477/20/6 | 124 | 5520 | 53 |
| 5361/1 | 124 | 5380/75 | 118 | 5408/4/15 | 149 | 5447/16 | 87 | 5478 | 76 | 5523 | 76 |
| 5361/2 | 124 | 5380/100 | 118 | 5410/65 | 143 | 5447/18 | 87 | | 157 | 5524/10 | 45 |
| 5361/3 | 124 | 5380/125 | 118 | 5413 | 108 | 5447/1/13 | 87 | 5479 | 75 | | 133 |
| 5361/4 | 124 | 5380/160 | 118 | 5413/25 | 108 | 5447/1/16 | 87 | 5480/10 | 105 | 5524/16 | 45 |
| 5361/5 | 124 | 5380/200 | 118 | 5414/10 | 125 | 5447/1/18 | 87 | 5480/13 | 105 | | 133 |
| 5361/6 | 124 | 5380/290 | 118 | 5414/10/9 | 125 | 5448/4 | 34 | 5480/15/45 | 105 | 5524/22 | 45 |
| 5361/7 | 124 | 5380/370 | 118 | 5414/15 | 125 | 5448/4/1 | 34 | 5483 | 161 | | 133 |
| 5361/8 | 123 | 5382 | 126 | 5414/20 | 125 | 5448/4/2 | 34 | 5484/4 | 153 | 5524/28 | 45 |
| 5362/8 | 122 | 5385/08 | 140 | 5414/25 | 125 | 5448/4/1/2 | 34 | 5485 | 63 | | 133 |
| 5362/13 | 122 | 5385/18 | 140 | 5414/30 | 125 | 5449/13/13 | 90 | 5487/18 | 120 | 5524/68/10 | 45 |
| 5362/18 | 122 | 5388 | 156 | 5414/3/10 | 125 | 5449/16/16 | 90 | 5487/76 | 120 | | 133 |
| 5365 | 121 | 5389/1239 | 46 | 5414/3/15 | 125 | 5449/18/18 | 90 | 5491 | 142 | 5524/68/16 | 45 |
| 5365/2 | 121 | 5395 | 100 | 5414/3/20 | 125 | 5451 | 130 | 5502/43/5 | 137 | | 133 |
| 5365/22 | 121 | 5396/3 | 143 | 5414/3/25 | 125 | | 136 | 5505 | 41 | 5524/68/21 | 45 |
| 5367/1/14 | 129 | 5396/4 | 143 | 5414/3/30 | 125 | 5452 | 160 | 5506 | 119 | | 133 |
| 5367/1/19 | 129 | 5396/5 | 143 | 5415 | 50 | 5453/13 | 107 | 5507 | 119 | 5524/68/28 | 45 |
| 5367/1/24 | 129 | 5396/6 | 143 | 5415/2 | 50 | 5453/16 | 107 | 5508/19 | 119 | | 133 |
| 5367/1/40 | 129 | 5396/8 | 143 | 5418 | 41 | 5453/16/18 | 107 | 5508/19A | 119 | 5525 | 79 |
| 5367/14 | 129 | 5397/3 | 143 | 5420/06 | 86 | 5453/18 | 107 | 5508/26A | 119 | 5526 | 80 |
| 5367/19 | 129 | 5397/4 | 143 | 5420/08 | 86 | 5459/0813 | 76 | 5509/19 | 119 | 5527 | 79 |
| 5367/24 | 129 | 5397/5 | 143 | 5420/10 | 86 | 5459/08 | 76 | 5509/26 | 119 | 5527/1 | 79 |
| 5367/29 | 129 | 5397/6 | 143 | 5422 | 126 | 5459/13 | 76 | 5509/19/A | 119 | 5528 | 79 |
| 5367/35 | 129 | 5397/8 | 143 | 5422/3 | 126 | 5459 | 76 | 5509/26/A | 119 | 5529/2 | 100 |
| 5367/40 | 129 | 5397/10 | 143 | 5423 | 102 | 5459/2///80 | 99 | 5510/20 | 120 | 5531 | 33 |
| 5367/2/14 | 129 | 5400/09/1 | 141 | 5424 | 55 | 5462/04 | 54 | 5510/25 | 120 | 5535/20 | 82 |
| 5367/2/19 | 129 | 5400/09/2 | 141 | 5428 | 102 | 5462/10 | 54 | 5510/30 | 120 | 5535/25 | 82 |
| 5367/2/29 | 129 | 5400/09/3 | 141 | 5431 | 33 | 5462/13 | 54 | 5511/10 | 120 | 5535/30 | 82 |
| 5367/3/14 | 129 | 5400/09/4 | 139 | 5435 | 150 | 5463/7 | 115 | 5511/12 | 120 | 5540 | 82 |
| 5367/3/40 | 129 | 5400/09/5 | 139 | 5435/7 | 150 | 5464 | 156 | 5511/16 | 120 | 5541 | 37 |
| 5367/4/14 | 129 | 5400/09/6 | 139 | 5436/4 | 153 | 5464/0/15 | 154 | 5512/15 | 101 | 5544 | 103 |
| 5367/4/19 | 129 | 5400/09/7 | 139 | 5437 | 153 | 5465 | 67 | 5512/40 | 101 | 5544/16 | 103 |
| 5367/4/24 | 129 | 5400/09/8 | 139 | 5437/4 | 153 | 5465/8 | 116 | 5512/70 | 101 | 5548/5 | 137 |
| 5367/4/29 | 129 | 5400/13/1 | 141 | 5438 | 47 | 5466 | 90 | 5512/20/40 | 101 | 5548/10 | 137 |
| 5367/4/35 | 129 | 5400/13/2 | 141 | 5438/51 | 47 | 5466/16 | 90 | 5513/6/15 | 101 | 5548/15 | 137 |
| 5367/4/40 | 129 | 5400/13/3 | 141 | 5439/08/2/4 | 124 | 5467 | 90 | 5513/6/20 | 101 | 5548/20 | 137 |
| 5368 | 39 | 5400/13/4 | 139 | 5439/08/3/4 | 124 | 5469 | 43 | 5513/20620 | 101 | 5548/25 | 137 |
| 5368/4 | 39 | 5400/13/5 | 139 | 5439/10/1/4 | 124 | 5470 | 120 | 5514 | 97 | 5548/27 | 137 |
| 5370/6 | 127 | 5400/13/6 | 139 | 5439/10/2/4 | 124 | 5471 | 63 | 5514/15 | 97 | 5548/30 | 137 |





Indice per codice

Code index

| CODICE CODE | pag. page | CODICE CODE | pag. page | CODICE CODE | pag. page | CODICE CODE | pag. page | CODICE CODE | pag. page | CODICE CODE | pag. page |
|----------------|--------------|----------------|--------------|----------------|--------------|----------------|--------------|----------------|--------------|----------------|--------------|
| 5548/35 | 137 | 5590/34 | 21 | 5851 | 98 | 6118/4/1 | 133 | 6214/13 | 112 | 6307/0/3 | 115 |
| 5548/40 | 137 | | 22 | 5855/10-10 | 98 | 6118/4/2 | 133 | 6215/8 | 111 | 6315/4/22 | 160 |
| 5549 | 83 | 5590 | 18 | 5860 | 108 | 6118/4/3 | 134 | 6215/10 | 111 | 6500/6 | 159 |
| 5550/05 | 138 | 5590/2 | 18 | 5880/1 | 84 | 6118/5/1 | 134 | 6215/11 | 111 | 6500/8 | 159 |
| 5550/10 | 138 | 5590/3 | 18 | 5880/2 | 84 | 6118/5/2 | 134 | 6215/12 | 111 | 6500/10 | 159 |
| 5550/15 | 138 | 5590/4 | 18 | 5880/3 | 84 | 6118/5/3 | 134 | 6215/13 | 112 | 6501/8 | 159 |
| 5550/20 | 138 | 5593/01 | 20 | 5900 | 43 | 6118/6/2 | 134 | 6220/10 | 111 | 6501/10 | 159 |
| 5550/25 | 138 | 5593/02 | 21 | 5901/0 | 43 | 6118/6/3 | 134 | 6221 | 111 | 6503 | 159 |
| 5550/30 | 138 | 5593 | 20 | 5901/1 | 43 | 6118/7/1 | 134 | 6222 | 111 | 6505/7 | 159 |
| 5550/35 | 138 | 5593/2 | 20 | 5902 | 43 | 6118/7/2 | 134 | 6223 | 111 | 6505/9 | 159 |
| 5550/40 | 138 | 5593/3 | 20 | 5904 | 57 | 6118/7/3 | 134 | 6224/22 | 112 | 6506/10 | 159 |
| 5550/45 | 138 | 5593/4 | 20 | 5905 - 5905A | 61 | 6118/8/1 | 134 | 6225/20 | 112 | 6512/3 | 160 |
| 5552/5 | 138 | 5594/1 | 77 | | 158 | 6118/8/2 | 134 | 6227/13/0 | 114 | 6512/4 | 160 |
| 5552/10 | 138 | 5594/2 | 77 | 5907 | 139 | 6118/8/3 | 134 | 6227/14 | 113 | 7300/10 | 71 |
| 5552/15 | 138 | 5595/1 | 65 | 5911 | 105 | 6118/9/1 | 134 | 6228 | 112 | 7300/13 | 71 |
| 5552/20 | 138 | 5595/2 | 64 | 5912 | 105 | 6118/9/2 | 134 | 6232/3 | 111 | | |
| 5552/25 | 138 | 5595/13 | 64 | 5915 | 57 | 6118/9/3 | 134 | 6232/6 | 111 | | |
| 5552/30 | 138 | 5598/0 | 72 | 5915/2 | 57 | 6118/10/1 | 134 | 6232/7 | 111 | | |
| 5552/35 | 138 | 5598/1 | 72 | 5916 | 57 | 6118/10/2 | 134 | 6233/5 | 111 | | |
| 5552/40 | 138 | 5598/2 | 72 | 5916/26 | 57 | 6118/10/3 | 134 | 6233/6 | 111 | | |
| 5555 | 136 | 5598/2/25 | 72 | 5917 | 59 | 6118/11/1 | 134 | 6233/7 | 111 | | |
| 5560/04 | 56 | 5600 | 72 | 5917/30 | 59 | 6118/11/2 | 134 | 6233/8 | 111 | | |
| 5560/10 | 56 | 5602/32 | 80 | 5918 | 106 | 6118/11/3 | 134 | 6234/8 | 111 | | |
| 5560/13 | 56 | 5605 | 61 | 5919 | 57 | 6118/12/1 | 134 | 6234/11 | 111 | | |
| 5568/1 | 141 | 5607/10 | 74 | 5922 | 54 | 6118/12/2 | 134 | 6234/12 | 111 | | |
| 5568/15 | 141 | 5607/13 | 74 | 5922/3 | 54 | 6118/12/3 | 134 | 6234/13 | 112 | | |
| 5568/2 | 141 | 5607/14/10 | 74 | 5922/15 | 54 | 6118/12/4 | 134 | 6235/5 | 111 | | |
| 5568/3 | 141 | 5607/2714 | 75 | 5922/17 | 54 | 6201 | 111 | 6235/6 | 111 | | |
| 5568/5 | 139 | 5615 | 57 | 5922/18 | 54 | 6202/5 | 111 | 6236/3/5 | 111 | | |
| 5568/10 | 139 | 5616 | 64 | 5922/1839 | 54 | 6202/6 | 111 | 6236/4 | 111 | | |
| 5569/08 | 78 | 5616/3/6 | 64 | 5970/14 | 53 | 6202/7 | 111 | 6236/4/5 | 111 | | |
| 5569 | 78 | 5621 | 40 | 5970/27 | 53 | 6203/6 | 111 | 6236/5 | 111 | | |
| 5570/04 | 56 | 5625/08 | 24 | 6100 | 135 | 6203/6/0 | 114 | 6237/3/5 | 111 | | |
| 5570/10 | 56 | 5625/10 | 24 | 6104 | 136 | 6203/7 | 111 | 6237/4 | 111 | | |
| 5570/13 | 56 | 5625/12 | 24 | 6107 | 136 | 6203/8 | 111 | 6237/4/5 | 111 | | |
| 5572/2 | 42 | 5625/415/8 | 26 | 6107/11 | 45 | 6203/9 | 111 | 6237/5 | 111 | | |
| 5575 | 78 | 5625/415/12 | 26 | | 136 | 6203/10 | 111 | 6238/12 | 112 | | |
| 5576 | 62 | 5629 | 75 | 6108 | 136 | 6204/8 | 111 | 6238/13 | 112 | | |
| 5580/01 | 61 | 5630 | 28 | 6109 | 136 | 6204/9 | 111 | 6238/14 | 112 | | |
| 5580/01/2 | 61 | 5630/1 | 28 | 6116 | 136 | 6204/10 | 111 | 6238/16 | 112 | | |
| 5580/05 | 60 | 5630/2 | 28 | 6117 | 139 | 6205/5 | 111 | 6238/16/0 | 114 | | |
| 5580/06 | 91 | 5633 | 29 | 6118/0/1/2 | 135 | 6205/6 | 111 | 6239/3/5 | 113 | | |
| 5580/08 | 58 | 5633/1 | 29 | 6118/0/1/3 | 135 | 6205/7 | 111 | 6240/5/19 | 114 | | |
| 5580/10 | 58 | | 30 | 6118/0/1/4 | 135 | 6205/9 | 111 | 6240/5/28 | 114 | | |
| 5580/1024 | 58 | 5633/2 | 29 | 6118/0/2/3 | 135 | 6206 | 111 | 6254 | 113 | | |
| 5583 | 161 | | 31 | 6118/0/2/4 | 135 | 6207 | 111 | 6258/5 | 113 | | |
| 5586/5 | 48 | 5633/6 | 30 | 6118/0/3/4 | 135 | 6207/0 | 114 | 6258/6/5 | 113 | | |
| 5586/6 | 48 | 5637 | 22 | 6118/1/1 | 140 | 6208 | 111 | 6259 | 112 | | |
| 5587 | 48 | 5637/1 | 22 | 6118/1/2 | 140 | 6209/0 | 114 | 6260 | 112 | | |
| 5588/01 | 61 | 5637/2 | 22 | 6118/1/3 | 140 | 6209/4 | 114 | 6269 | 112 | | |
| 5588/08 | 60 | 5640 | 32 | 6118/1/4 | 138 | 6209/4/4 | 114 | 6301/10 | 108 | | |
| 5589 | 48 | 5640/2 | 32 | 6118/1/7/2 | 141 | 6209/12 | 111 | 6303 | 108 | | |
| 5590/01 | 18 | 5643/9 | 49 | 6118/2/1 | 133 | 6211/16 | 112 | 6304 | 160 | | |
| 5590/02 | 19 | 5648/4 | 31 | 6118/3/1 | 133 | 6211/6/5 | 114 | 6307/0/1 | 115 | | |
| 5590/34 | 19 | 5648/6 | 31 | 6118/3/2 | 133 | 6213/0/16 | 113 | 6307/0/2 | 115 | | |



Condizioni generali di Vendita

General Sales Terms



Condizioni Generali di Vendita

- 1 - I prezzi indicati, salvo pattuazioni contrarie, si intendono netti di sconto e franco ns. Stabilimento.
- 2 - Qualsiasi vendita fatta dagli Agenti, è soggetta all'approvazione della Società venditrice.
- 3 - Non si accettano annullamenti d'ordine se non concordati e in ogni modo il Fornitore può esigere il diritto di indennizzo degli eventuali oneri sofferti per tale annullamento.
- 4 - Le merci viaggiano a rischio e pericolo del committente. In mancanza di precise istruzioni, verrà effettuata la spedizione col mezzo ritenuto più opportuno e pertanto ciò non può dar luogo a reclami. In caso di avarie o di mancanza di merce, il compratore deve immediatamente agire contro il vettore. La merce non viene coperta da assicurazione di nessun genere se non dietro espressa richiesta e per conto dell'acquirente. La verifica della merce e le prove o analisi relative dovranno essere fatte dal compratore al ricevimento e non saranno presi in considerazione reclami dopo otto giorni.
- 5 - I termini di consegna si intendono sempre approssimativi ed in relazione alle possibilità del momento i ritardi eventuali non danno diritto a compensi o indennizzi o risarcimenti di danni diretti o indiretti né all'annullamento della commissione. I pagamenti non effettuati alle dovute scadenze da parte dei compratori prolungano il termine di consegna e danno anche diritto di sospensione o annullamento delle forniture in corso.
- 6 - In caso di errori o difetti di fabbricazione comunicati entro otto giorni dalla consegna e riconosciuti da noi come tali, le merci difettose verranno sostituite escluso però ogni e qualsiasi obbligo di indennizzo, compreso o risarcimento di danni diretti o indiretti. La sostituzione delle merci difettose avverrà nel più breve tempo possibile. Ritorni arbitrari di merci non saranno accettati. I ritardi dei pagamenti da parte del compratore sospendono ogni garanzia.
- 7 - Le fatture si intendono integralmente accettate ove non siano respinte entro cinque giorni dal loro arrivo. Il compratore deve sempre effettuare il pagamento, salvo far valere successivamente le sue eventuali ragioni (solve et repete).
- 8 - I pagamenti si intendono fatti al ns domicilio in valuta legale, netti di sconto, alle epoche pattuite. Nessuna contestazione sollevata dal compratore potrà giustificare il rifiuto del pagamento nei termini convenuti. Non è riconosciuto nessun pagamento indiretto e il pagamento per assegni ed effetti cambiari si accetta salvo buon fine e non a novazione del credito.
- 9 - Decliniamo ogni responsabilità per incidenti a persone, o cose, che potessero verificarsi per causa o in dipendenza dei prodotti da noi forniti. Questo anche durante l'esecuzione dei collaudi.
- 10 - I disegni del catalogo sono puramente indicativi con riserva da parte della Società venditrice di eseguire tutte quelle variazioni di quote che riterrà opportune senza per altro darne avviso.
- 11 - Foro Competente: per le controversie inerenti al presente Contratto sarà esclusivamente competente il Foro di Firenze.
- 12 - Tutti i nostri articoli vengono forniti smontati.

Condizioni Particolari di Fornitura

- 1 - Vengono fornite unicamente confezioni standard.
- 2 - Minimo di ordinazione € 260.
- 3 - Resa franco nostro stabilimento.
- 4 - Pagamento contro RiBA a 30 giorni data fattura netto. Per le prime forniture è richiesto il pagamento anticipato.
- 5 - Se in ordine non è specificato il colore, il particolare sarà fornito nel colore disponibile.
- 6 - L'evasione degli ordini avverrà entro 20÷25 giorni dal loro ricevimento o chiarimento o in tempi più lunghi per cause di forza maggiore.
- 7 - Per articoli non disponibili concordare tempi di consegna con l'ufficio vendita.

Accettazione Ordini

- 1 - L'accettazione ordini è subordinata a quanto segue:
 - a) previa comunicazione, preferibilmente scritta, che ci trasmetterete tramite e-mail, telefax o lettera;
 - b) esatta identificazione della codifica completa dei ns. articoli da parte Vostra.
- 2 - Per errori di consegna da parte nostra, ci impegnamo a rispedire il materiale da Voi richiesto, effettuando una spedizione franco destino.
- 3 - Per contro, se verrà riscontrato un'errore da parte Vostra siamo disposti ad accettare il reso franco ns. magazzino, addebitando un'importo pari al 30% del valore della fornitura. Quanto sopra al solo scopo di recupero delle spese di gestione. La restituzione dovrà avvenire comunque entro e non oltre 15 gg. dal ricevimento della merce.

General Sales Terms

- 1 - If not otherwise stated, prices are net of discount and ex-factory.
- 2 - Any sale made by our Agents is subject to Seller's approval.
- 3 - Order cancellations are not accepted, if not agreed previously, and in any case the Supplier is entitled to request the reimbursement for charges borne because of such cancellations.
- 4 - Goods are carried at Buyer's risk. Failing specific instructions, goods will be forwarded by the most convenient means of conveyance and this will not give cause for any claim. In case of damage or lack of goods, Buyer will immediately proceed against the carrier. Goods are not covered by any type or insurance, not expressly requested by the Buyer. Insurance cost shall be at Buyer's expenses. Goods will be checked, tested and undergo relevant analysis for the account of the Buyer, upon receipt. Claims made after 8 days from receipt will not be taken into consideration.
- 5 - Delivery terms are approximate and depend on the means available at that moment. Possible delays will not entitle the Buyer to request either any compensation, indemnity or reimbursement for direct and consequential damages or to cancel the order. Payments which are not made on due dates by Buyers will cause the postponement of delivery terms and entitle the Seller to suspend or even cancel orders on hand.
- 6 - In case of mistakes or manufacturing defects which are made known within 8 days from receipt of goods and are acknowledged by us as such defective goods will be replaced without giving right to any indemnity, compensation or reimbursement for direct and consequential damages. Defective goods will be replaced as quickly as possible. Unauthorized returns of goods are not admitted. Delays in payments by the Buyer will suspend any guarantee.
- 7 - Invoices are to be understood fully accepted if they are not rejected within 5 days from their arrival. In any case the Buyer must make the payment, subject to have his claims recognized later on.
- 8 - Payments shall be made at Seller's residence, in legal currency, net of discount and when agreed upon. No objection raised by the Buyer may justify his refusal to pay on agreed terms. Indirect payments are not admitted and payments by cheque or banks bills are accepted subject to collection and not to credit novation.
- 9 - We decline any liability for accidents to persons and property which may occur by reason or in consequence of products supplied by us. This applies also to accidents which may occur during testing.
- 10 - Catalogue drawings are shown as example only. The Seller reserves the right to change all dimensions without notice he will deem necessary.
- 11 - Any dispute relating to present Contract shall be settled exclusively by the Court of Florence.
- 12 - All our items are supplied disassembled.

Special Terms of Supply

- 1 - Standard packages only are admitted.
- 2 - Minimum order value: € 260.
- 3 - Delivery will be ex-factory
- 4 - Payment will be by draft, 30 days net monthly account. First supplies to new Customers will be in advance by swift.
- 5 - If colour is not indicated on order the item will be delivered in the available colour.
- 6 - Orders shall be carried out within 20÷25 days from their receipt or from eventual explanations requested by the Seller or within longer terms on case of Force Majeure.
- 7 - Delivery terms for items out of stock to be discussed with sales office.

Order Acceptance

- 1 - Order acceptance is subject to what stated hereinunder:
 - a) orders shall be placed in writing, by e-mail, telefax or letter;
 - b) complete and exact item identification codes shall be mentioned in your orders.
- 2 - In case of misdelivery, to be attributed to us, we engage to forward again the material requested by you, carriage paid.
- 3 - On the contrary, if the mistake is chargeable to you, we are ready to accept the return of goods, carriage free. In this case an amount equal to 30% of total order value will be debited to you, in order to recover management expenses. Restitution of goods will have to take place within and not over 15 days from their receipt.



