

19 *cupchains* & FINDINGS

These products are metal chains and findings that integrate Round- or Fancy Stones. They can be divided in nine categories: Single Stone Settings, Cupchains, Multi Stone Settings, Fancy Multi Settings, Channels, Metal Buttons & Filigrees, Rondelles, Linked Findings and Brass Components. All of them are offered in a large variety of shapes, sizes, colours and platings.



cupchains & FINDINGS
COLOURS & EFFECTS

Colours

 Crystal 001	 Provence Lavender 283	 Chrysolite 238	 Sand Opal 287
 White Opal 234	 Tanzanite 539	 Peridot 214	 Light Grey Opal 383
 White Alabaster 281	 Cyclamen Opal 398	 Fern Green 291	 Greige 284
 Rose Water Opal 395	 Amethyst 204	 Erinite 360	 Black Diamond 215
 Vintage Rose 319	 Purple Velvet 277	 Emerald 205	 Jet 280
 Light Rose 223	 Dark Indigo 288	 Palace Green Opal 393	 Dark Multi* 902
 Rose 209	 Montana 207	 Olivine 228	 Soft Multi* 905
 Indian Pink 289	 Capri Blue 243	 Khaki 550	 Light Multi* 907
 Fuchsia 502	 Sapphire 206	 Light Topaz 226	
 Ruby 501	 Light Sapphire 211	 Jonquil 213	
 Padparadscha 542	 Air Blue Opal 285	 Silk 391	Effects
 Hyacinth 236	 Aquamarine 202	 Light Peach 362	 Crystal Aurore Boreale 001 AB
 Light Siam 227	 Light Azore 361	 Light Colorado Topaz 246	 Crystal Moonlight 001 MOL
 Dark Red Coral 396	 Indian Sapphire 217	 Topaz 203	 Crystal Silver Shade 001 SSHA
 Siam 208	 Pacific Opal 390	 Light Smoked Topaz 221	 Crystal Golden Shadow 001 GSHA
 Garnet 241	 Turquoise 267	 Smoked Topaz 220	
 Burgundy 515	 Indicolite 379	 Mocca 286	
 Light Amethyst 212	 Caribbean Blue Opal 394	 Smoky Quartz 225	
 Violet 371	 Blue Zircon 229		

Alphabetical Order

Air Blue Opal (285)	Greige (284)	Padparadscha (542)
Amethyst (204)	Hyacinth (236)	Palace Green Opal (393)
Aquamarine (202)	Indian Pink (289)	Peridot (214)
Black Diamond (215)	Indian Sapphire (217)	Provence Lavender (283)
Blue Zircon (229)	Indicolite (379)	Purple Velvet (277)
Burgundy (515)	Jet (280)	Rose (209)
Capri Blue (243)	Jonquil (213)	Rose Water Opal (395)
Caribbean Blue Opal (394)	Khaki (550)	Ruby (501)
Chrysolite (238)	Light Amethyst (212)	Sand Opal (287)
Crystal (001)	Light Azore (361)	Sapphire (206)
Crystal Aurore Boreale (001 AB)	Light Colorado Topaz (246)	Siam (208)
Crystal Golden Shadow (001 GSHA)	Light Grey Opal (383)	Silk (391)
Crystal Moonlight (001 MOL)	Light Multi* (907)	Smoked Topaz (220)
Crystal Silver Shade (001 SSHA)	Light Peach (362)	Smoky Quartz (225)
Cyclamen Opal (398)	Light Rose (223)	Soft Multi* (905)
Dark Indigo (288)	Light Sapphire (211)	Tanzanite (539)
Dark Multi* (902)	Light Siam (227)	Topaz (203)
Dark Red Coral (396)	Light Smoked Topaz (221)	Turquoise (267)
Emerald (205)	Light Topaz (226)	Vintage Rose (319)
Erinite (360)	Mocca (286)	Violet (371)
Fern Green (291)	Montana (207)	White Alabaster (281)
Fuchsia (502)	Olivine (228)	White Opal (234)
Garnet (241)	Pacific Opal (390)	

Classic Colours: This colour range offers a wide choice of traditional Swarovski crystal colours.

Exclusive Colours: This colour range is offered exclusively by Swarovski.

The standard assortment of colours and effects may vary according to the product group.

Slight changes in shades are unavoidable.

The plating resistance of effects is tested according to Swarovski's plating guidelines (WWW.SWAROVSKI-ELEMENTS.COM/BUSINESS). Customers are advised to carry out their own tests if customers' plating parameters diverge from Swarovski plating guidelines.

* Dark Multi consists of Topaz, Sapphire, Emerald, Amethyst and Siam.

Soft Multi consists of Crystal, Aquamarine, Jonquil, Light Rose and Peridot.

Light Multi consists of Jonquil, Light Amethyst, Light Sapphire, Light Rose and Peridot.

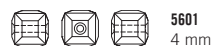
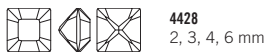
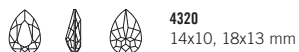
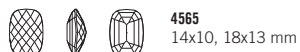
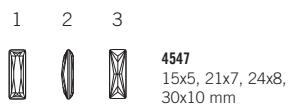
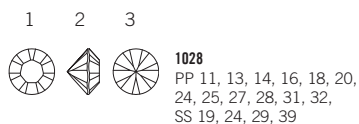
Plating Details

<<<

Article Group	Available Plating Options
01 Single Stone Settings	(G) Gun Metal
02 Cupchains	(S) Sterling Silver 15 Mil
03 Multi Stone Settings	(3) Gold 3–5 Mil*
04 Fancy Multi Settings	Fancy Multi Setting art. 42211 is only available with plating.
05 Channels	
06 Metal Buttons & Filigrees	(G) Gun Metal
	(S) Sterling Silver 15 Mil
	(3) Gold 3–5 Mil
	Filigrees (art. 62000-62027) are additionally available in Antique Gold (A) and Antique Silver (B).
07 Rondelles	(G) Gun Metal
	(S) Sterling Silver 15 Mil
	(3) Gold 3–5 Mil
08 Linked Findings	(G) Gun Metal
	(S) Sterling Silver 15 Mil
	(3) Gold 3–5 Mil
09 Brass Components	(G) Gun Metal
	(S) Sterling Silver 15 Mil
	(3) Gold 3–5 Mil

* Stretch articles 37E00, 37E04, 38E02 and 31E02 are only available with plating.

Base Stones

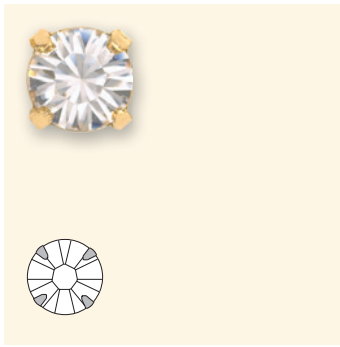




Article Explanation - Base Item Number

<<<

17 704



1	7	7	04
Product category	Stone code (type of stone used)	Setting code	Number of prongs in the setting (always 2-digit code)
1 Single Stone Settings	1 Baguette 2 Heart 3 Navette 5 Oval 6 Pear 7 Round 8 Square 9 Other	1 Baguette 2 Heart 3 Navette 5 Oval 6 Pear 7 Round 8 Square 9 Other 0 Basic	02 04 05 09 10 12

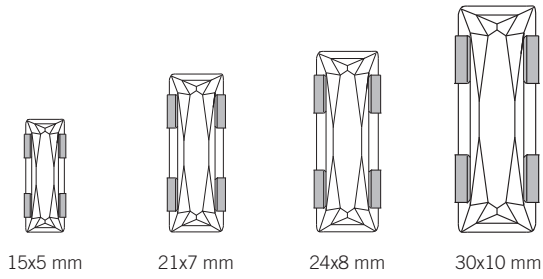
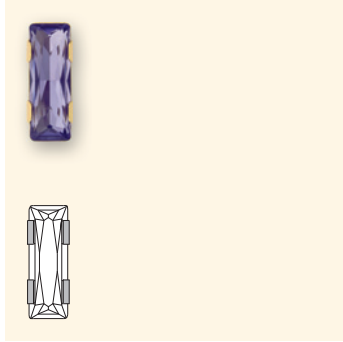
Ordering Example & Product Variety Explanation

<<<

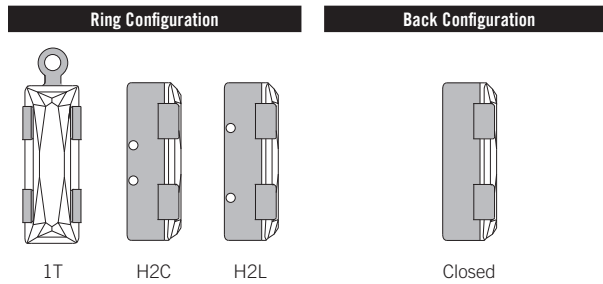
1	17 704	P18	00	C
Material type	Base item number	Stone size	Ring configuration	Back configuration
All Single Stone Settings come in brass unless Sterling is requested. Please consult your customer service representative for special orders.		3-digit code from respective product matrix	H2 2 Holes 00 No Rings 1C 1 Ring/Corner 1T 1 Ring/Top	A Headpin (0.05x3.81 cm) C Closed E Headpin (0.07x3.81 cm) O Open L Large hole distance
1 Brass 2 Sterling				
F1	3	1028	F	001
Stone pattern	Plating	Base stone art. no.	Foiling	Colour of crystal
F1 Crystal/colour/effect	Can be added at an additional charge Z No Plating G Gun Metal Plating* S Sterling Silver 15 Mil* 3 Gold 3-5 Mil* <small>* Anti nickel allergenic</small>	1028 4120 4127 4128 4161 4228 4320 4327 4328 4428 4470 4501 4547 4565 4627 4739 4744 4757 4800 4831	F Foiled	Please see the respective colour chart at the beginning of this chapter for all available code references.

Not all configurations are available for all articles. Please refer to the respective product matrix for all available options.

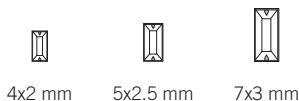
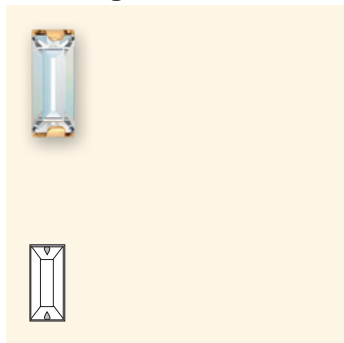
11 004 Princess Baguette



Stone Size		Ring Configuration		Back Configuration		Stone Art. No.
Code	Description	Code	Description	Code	Description	
15M	15x5 mm	00	None	C	Closed	4547
15M	15x5 mm	1T	1R, Top	C	Closed	
15M	15x5 mm	H2	2 Holes	C	Closed	
21M	21x7 mm	00	None	C	Closed	
21M	21x7 mm	1T	1R, Top	C	Closed	
21M	21x7 mm	H2	2 Holes	C	Closed	
21M	21x7 mm	H2	2 Holes	L	Large	
24M	24x8 mm	00	None	C	Closed	
24M	24x8 mm	1T	1R, Top	C	Closed	
24M	24x8 mm	H2	2 Holes	C	Closed	
24M	24x8 mm	H2	2 Holes	L	Large	
30M	30x10 mm	00	None	C	Closed	
30M	30x10 mm	1T	1R, Top	C	Closed	
30M	30x10 mm	H2	2 Holes	C	Closed	
30M	30x10 mm	H2	2 Holes	L	Large	



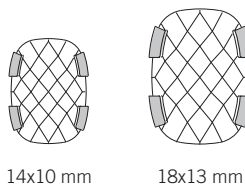
11 102 Baguette



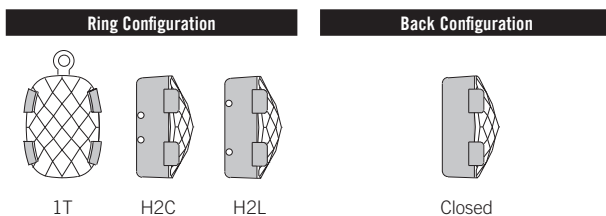
Stone Size		Ring Configuration		Back Configuration		Stone Art. No.
Code	Description	Code	Description	Code	Description	
04M	4x2 mm	00	None	C	Closed	4501
05M	5x2.5 mm	00	None	C	Closed	
07M	7x3 mm	00	None	C	Closed	
07M	7x3 mm	H2	2 Holes	C	Closed	



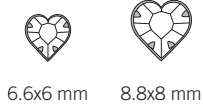
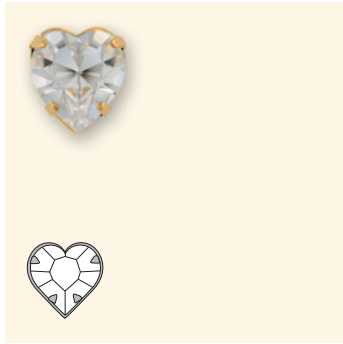
11 504 Classical Baguette



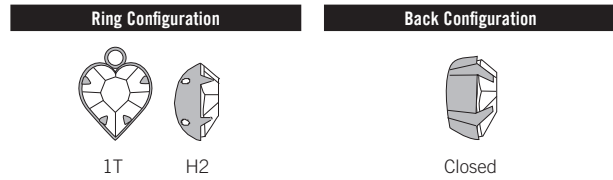
Stone Size		Ring Configuration		Back Configuration		Stone Art. No.
Code	Description	Code	Description	Code	Description	
14M	14x10 mm	00	None	C	Closed	4565
14M	14x10 mm	1T	1R, Top	C	Closed	
14M	14x10 mm	H2	2 Holes	C	Closed	
18M	18x13 mm	00	None	C	Closed	
18M	18x13 mm	1T	1R, Top	C	Closed	
18M	18x13 mm	H2	2 Holes	C	Closed	
18M	18x13 mm	H2	2 Holes	L	Large	



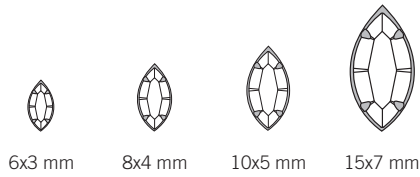
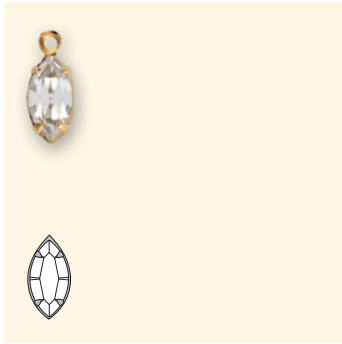
12 204 Heart



Stone Size		Ring Configuration		Back Configuration		Stone Art. No.	
Code	Description	Code	Description	Code	Description	4800	4831
06M	6.6x6 mm	1T	1R, Top	C	Closed	■	■
08M	8.8x8 mm	00	None	C	Closed	■	■
08M	8.8x8 mm	1T	1R, Top	C	Closed	■	■
08M	8.8x8 mm	H2	2 Holes	C	Closed	■	■



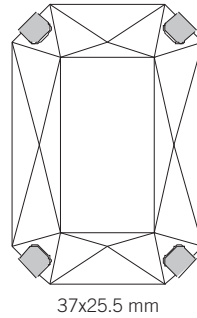
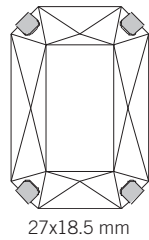
13 304 Navette



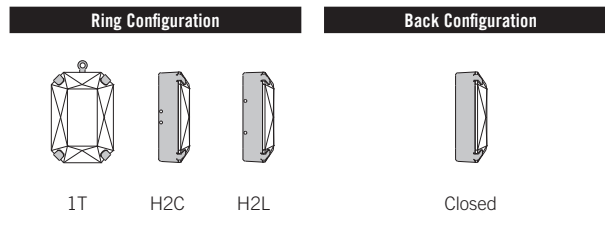
Stone Size		Ring Configuration		Back Configuration		Stone Art. No.
Code	Description	Code	Description	Code	Description	
06M	6x3 mm	00	None	C	Closed	4228
06M	6x3 mm	1T	1R, Top	C	Closed	
08M	8x4 mm	00	None	C	Closed	
08M	8x4 mm	1T	1R, Top	C	Closed	
10M	10x5 mm	00	None	C	Closed	
10M	10x5 mm	1T	1R, Top	C	Closed	
10M	10x5 mm	H2	2 Holes	C	Closed	
X7M	15x7 mm	00	None	C	Closed	
X7M	15x7 mm	1T	1R, Top	C	Closed	
X7M	15x7 mm	H2	2 Holes	C	Closed	



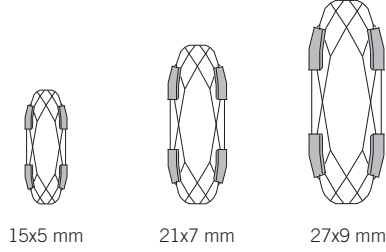
14 904



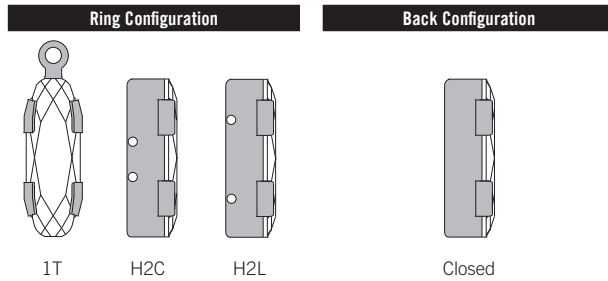
Stone Size		Ring Configuration		Back Configuration		Stone Art. No.
Code	Description	Code	Description	Code	Description	
27M	27x18.5 mm	00	None	C	Closed	4627
27M	27x18.5 mm	1T	1R, Top	C	Closed	
27M	27x18.5 mm	H2	2 Holes	C	Closed	
27M	27x18.5 mm	H2	2 Holes	L	Large	
37M	37x25.5 mm	00	None	C	Closed	
37M	37x25.5 mm	1T	1R, Top	C	Closed	
37M	37x25.5 mm	H2	2 Holes	C	Closed	
37M	37x25.5 mm	H2	2 Holes	L	Large	



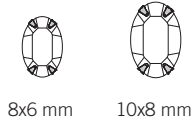
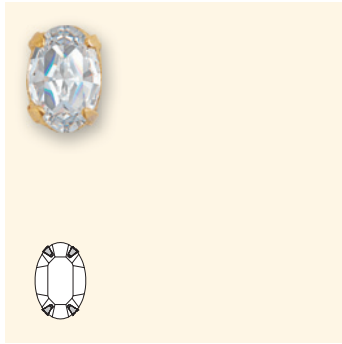
15 004 Oval



Stone Size		Ring Configuration		Back Configuration		Stone Art. No.
Code	Description	Code	Description	Code	Description	
15M	15x5 mm	00	None	C	Closed	4161
15M	15x5 mm	1T	1R, Top	C	Closed	
15M	15x5 mm	H2	2 Holes	C	Closed	
21M	21x7 mm	00	None	C	Closed	
21M	21x7 mm	1T	1R, Top	C	Closed	
21M	21x7 mm	H2	2 Holes	C	Closed	
21M	21x7 mm	H2	2 Holes	L	Large	
27M	27x9 mm	00	None	C	Closed	
27M	27x9 mm	1T	1R, Top	C	Closed	
27M	27x9 mm	H2	2 Holes	C	Closed	
27M	27x9 mm	H2	2 Holes	L	Large	



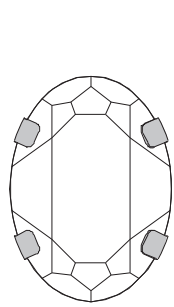
15 504 Oval



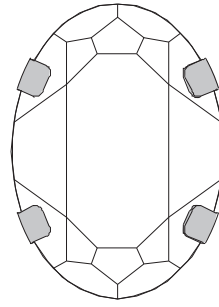
Stone Size		Ring Configuration		Back Configuration		Stone Art. No.	
Code	Description	Code	Description	Code	Description	4128	4120
08M	8x6 mm	00	None	C	Closed	■	■
08M	8x6 mm	1T	1R, Top	C	Closed	■	■
08M	8x6 mm	H2	2 Holes	C	Closed	■	■
10M	10x8 mm	00	None	C	Closed	■	■
10M	10x8 mm	1T	1R, Top	C	Closed	■	■
10M	10x8 mm	H2	2 Holes	C	Closed	■	■



15 904



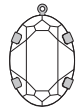
30x22 mm



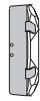
39x28 mm

Stone Size		Ring Configuration		Back Configuration		Stone Art. No.
Code	Description	Code	Description	Code	Description	
30M	30x22 mm	00	None	C	Closed	4127
30M	30x22 mm	1T	1R, Top	C	Closed	
30M	30x22 mm	H2	2 Holes	C	Closed	
30M	30x22 mm	H2	2 Holes	L	Large	
39M	39x28 mm	00	None	C	Closed	
39M	39x28 mm	1T	1R, Top	C	Closed	
39M	39x28 mm	H2	2 Holes	C	Closed	
39M	39x28 mm	H2	2 Holes	L	Large	

Ring Configuration **Back Configuration**



1T



H2C

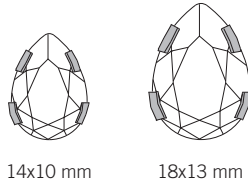
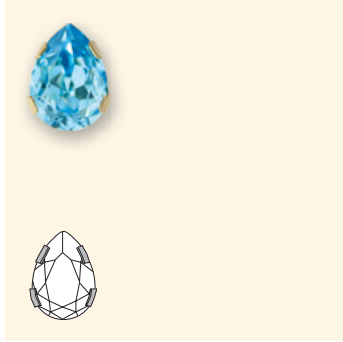


H2L

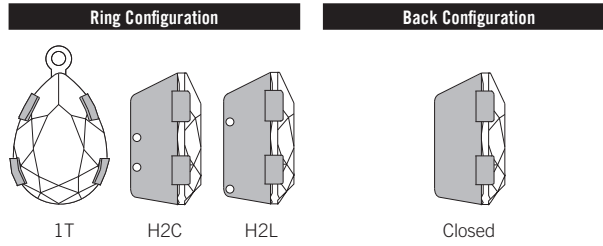


Closed

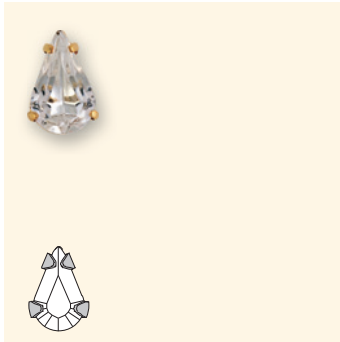
16 004 Pear



Stone Size		Ring Configuration		Back Configuration		Stone Art. No.
Code	Description	Code	Description	Code	Description	
14M	14x10 mm	00	None	C	Closed	4320
14M	14x10 mm	1T	1R, Top	C	Closed	
14M	14x10 mm	H2	2 Holes	C	Closed	
18M	18x13 mm	00	None	C	Closed	
18M	18x13 mm	1T	1R, Top	C	Closed	
18M	18x13 mm	H2	2 Holes	C	Closed	
18M	18x13 mm	H2	2 Holes	L	Large	



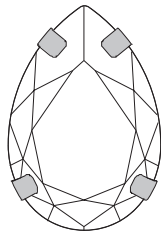
16 604 Pear



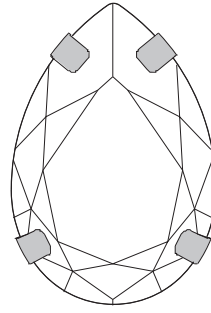
Stone Size		Ring Configuration		Back Configuration		Stone Art. No.	
Code	Description	Code	Description	Code	Description	4328	4320
06M	6x3.6 mm	00	None	C	Closed	■	■
06M	6x3.6 mm	1T	1R, Top	C	Closed	■	■
08M	8x4.8 mm	00	None	C	Closed	■	■
08M	8x4.8 mm	1T	1R, Top	C	Closed	■	■
08M	8x4.8 mm	H2	2 Holes	C	Closed	■	■
10M	10x6 mm	00	None	C	Closed	■	■
10M	10x6 mm	1T	1R, Top	C	Closed	■	■
10M	10x6 mm	1T	1R, Top	O	Open	■	■
10M	10x6 mm	H2	2 Holes	C	Closed	■	■
X7M	13x7.8 mm	00	None	C	Closed	■	■
X7M	13x7.8 mm	1T	1R, Top	C	Closed	■	■
18M	18x13 mm	1T	1R, Top	O	Open	■	■



16 904



30x20 mm



40x27 mm

Stone Size		Ring Configuration		Back Configuration		Stone Art. No.
Code	Description	Code	Description	Code	Description	
30M	30x20 mm	00	None	C	Closed	4327
30M	30x20 mm	1T	1R, Top	C	Closed	
30M	30x20 mm	H2	2 Holes	C	Closed	
30M	30x20 mm	H2	2 Holes	L	Large	
40M	40x27 mm	00	None	C	Closed	
40M	40x27 mm	1T	1R, Top	C	Closed	
40M	40x27 mm	H2	2 Holes	C	Closed	
40M	40x27 mm	H2	2 Holes	L	Large	

Ring Configuration Back Configuration



1T



H2C



H2L



Closed

17 009 Round



Stone Size		Ring Configuration		Back Configuration		Stone Art. No.
Code	Description	Code	Description	Code	Description	
P32	PP 32	00	None	C	Closed	1028
S19	SS 19	00	None	C	Closed	
S24	SS 24	00	None	C	Closed	

Back Configuration



Closed

17 010 Round



Stone Size		Ring Configuration		Back Configuration		Stone Art. No.
Code	Description	Code	Description	Code	Description	
S29	SS 29	00	None	C	Closed	1028

Back Configuration



Closed

17 012 Round



SS 39

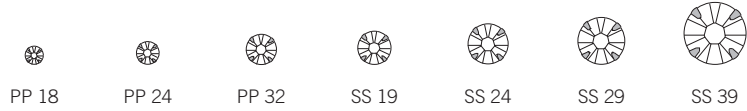
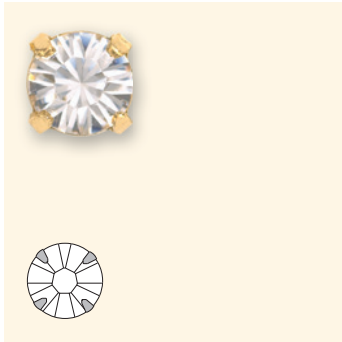
Stone Size		Ring Configuration		Back Configuration		Stone Art. No.
Code	Description	Code	Description	Code	Description	
S39	SS 39	00	None	C	Closed	1028

Back Configuration

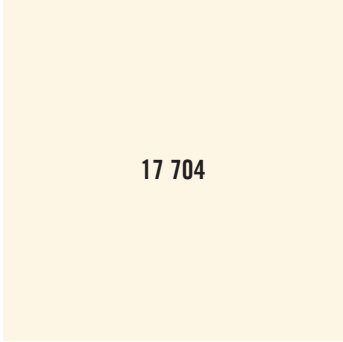


Closed

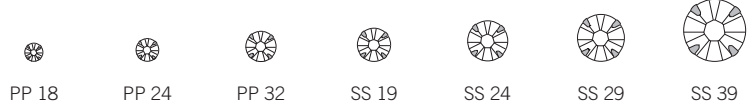
17 704 Round



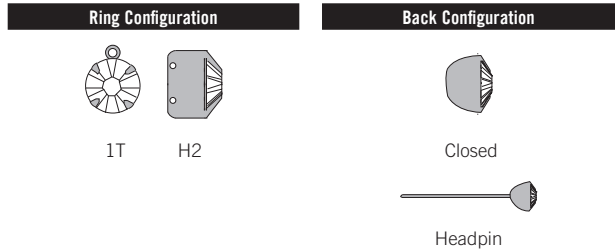
Stone Size		Ring Configuration		Back Configuration		Stone Art. No.
Code	Description	Code	Description	Code	Description	
P18	PP 18	00	None	C	Closed	1028
P18	PP 18	00	None	A	Headpin (3.81x0.05 cm)	
P18	PP 18	00	None	E	Headpin (3.81x0.07 cm)	
P24	PP 24	00	None	C	Closed	
P24	PP 24	1T	1R, Top	C	Closed	
P24	PP 24	00	None	A	Headpin (0.05x3.81 cm)	
P24	PP 24	00	None	E	Headpin (0.07x3.81 cm)	
P32	PP 32	00	None	C	Closed	
P32	PP 32	1T	1R, Top	C	Closed	
P32	PP 32	00	None	A	Headpin (3.81x0.05 cm)	
P32	PP 32	00	None	E	Headpin (3.81x0.07 cm)	
S19	SS 19	00	None	C	Closed	
S19	SS 19	1T	1R, Top	C	Closed	



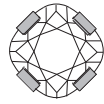
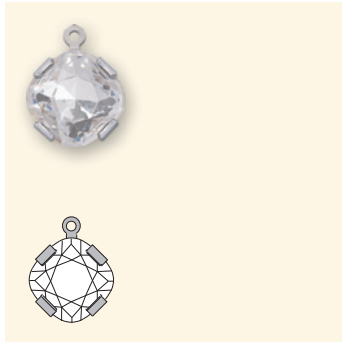
17 704



Stone Size		Ring Configuration		Back Configuration		Stone Art. No.
Code	Description	Code	Description	Code	Description	
S24	SS 24	00	None	C	Closed	1028
S24	SS 24	1T	1R, Top	C	Closed	
S29	SS 29	00	None	C	Closed	
S29	SS 29	1T	1R, Top	C	Closed	
S29	SS 29	H2	2 Holes	C	Closed	
S39	SS 39	00	None	C	Closed	
S39	SS 39	1T	1R, Top	C	Closed	



18 704 Antique Square



12 mm

Stone Size		Ring Configuration		Back Configuration		Stone Art. No.
Code	Description	Code	Description	Code	Description	
12M	12 mm	00	None	C	Closed	4470
12M	12 mm	1T	1R, Top	C	Closed	
12M	12 mm	H2	2 Holes	C	Closed	

Ring Configuration		Back Configuration	
	1T		H2
	Closed		

18 804 Square



4 mm

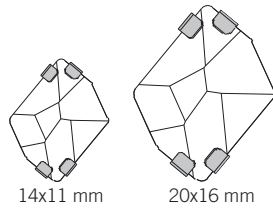


6 mm

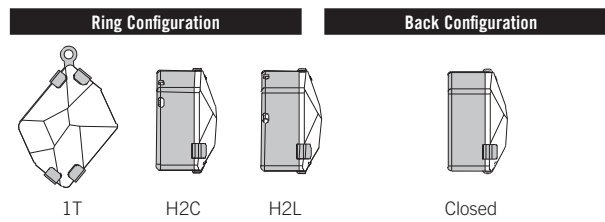
Stone Size		Ring Configuration		Back Configuration		Stone Art. No.
Code	Description	Code	Description	Code	Description	
04M	4 mm	00	None	C	Closed	4428
04M	4 mm	1C	1R, Corner	C	Closed	
06M	6 mm	00	None	C	Closed	
06M	6 mm	1C	1R, Corner	C	Closed	
06M	6 mm	H2	2 Holes	C	Closed	

Ring Configuration		Back Configuration	
	1C		H2
	Closed		

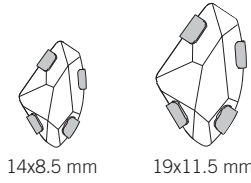
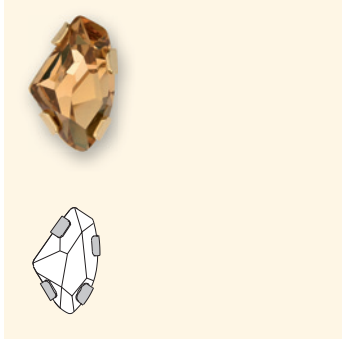
19 004 Cosmic Single Stone Setting



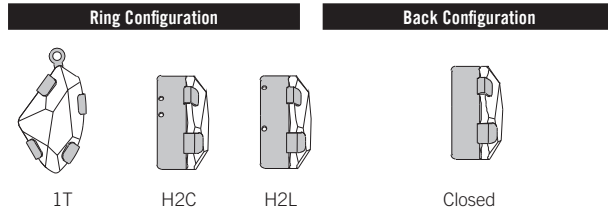
Stone Size		Ring Configuration		Back Configuration		Stone Art. No.
Code	Description	Code	Description	Code	Description	
14M	14x11 mm	00	None	C	Closed	4739
14M	14x11 mm	1T	1R, Top	C	Closed	
14M	14x11 mm	H2	2 Holes	C	Closed	
20M	20x16 mm	00	None	C	Closed	
20M	20x16 mm	1T	1R, Top	C	Closed	
20M	20x16 mm	H2	2 Holes	C	Closed	
20M	20x16 mm	H2	2 Holes	L	Large	



19 304 Galactic Single Stone Setting






Stone Size		Ring Configuration		Back Configuration		Stone Art. No.
Code	Description	Code	Description	Code	Description	
14M	14x8.5 mm	00	None	C	Closed	4757
14M	14x8.5 mm	1T	1R, Top	C	Closed	
14M	14x8.5 mm	H2	2 Holes	C	Closed	
19M	19x11.5 mm	00	None	C	Closed	
19M	19x11.5 mm	1T	1R, Top	C	Closed	
19M	19x11.5 mm	H2	2 Holes	C	Closed	
19M	19x11.5 mm	H2	2 Holes	L	Large	



19 905 Flower Finding



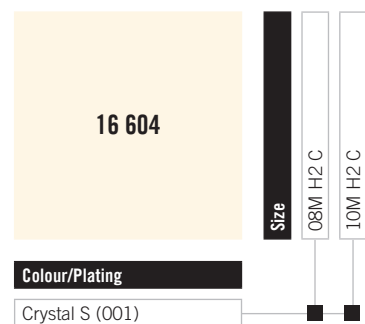
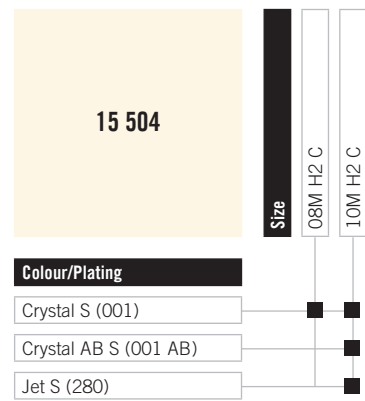
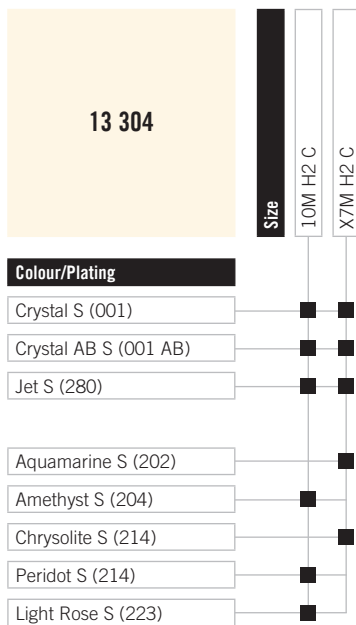
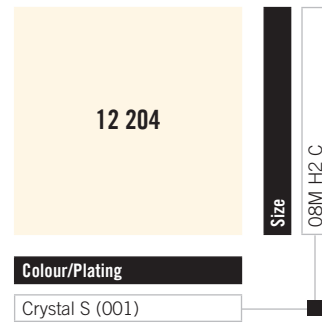
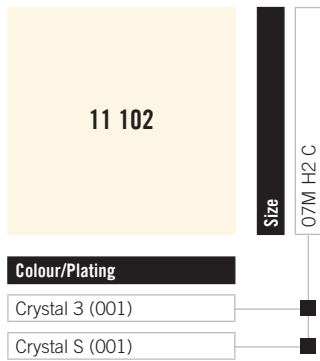
Stone Size		Ring Configuration		Back Configuration		Stone Art. No.
Code	Description	Code	Description	Code	Description	
10M	10 mm	00	None	C	Closed	4744
10M	10 mm	1T	1R, Top	C	Closed	
10M	10 mm	H2	2 Holes	C	Closed	

Ring Configuration		Back Configuration
		
1T	H2	Closed

Stock Programme



These articles can be delivered ex stock Wattens.



Cupchains & Findings

17 704		Size	P18 00 A	P18 00 E	P24 00 A	P24 00 E	P24 1T C	P32 00 E	P32 1T C	S29 1T C	S29 H2 C
Colour/Plating											
Crystal 3 (001)			■	■		■					
Crystal S (001)			■	■	■	■		■		■	■
Crystal Z (001)							■		■	■	
Crystal AB S (001 AB)				■		■					■

Single Stone Settings

17 009		Size	P32 00 C	S19 00 C
Colour/Plating				
Crystal Z (001)			■	■

17 010		Size	S29 00 C
Colour/Plating			
Crystal Z (001)			■

18 704		Size	12M 1T C
Colour/Plating			
Crystal S (001)			■

18 804		Size	04M 1C C	06M H2 C
Colour/Plating				
Crystal S (001)			■	■





cupchains

These products are metal chains that integrate Round- or Fancy Stones. Cupchains are offered in a large variety of shapes, sizes, colours and platings.

Article Explanation - Base Item Number

<<<

27 004



2	7	0	04
Product category	Stone code (type of stone used)	Setting code	Number of prongs in the setting (always 2-digit code)
2 Cupchains	1 Baguette 3 Navette 7 Round 8 Square	D Snake 0 Basic 1 Extended 2 Skip/String 3 Tiffany 4 Flower/Butterfly	02 04 D4 F4 R4 08 Tiffany 00 Bezel

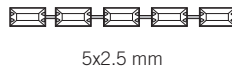
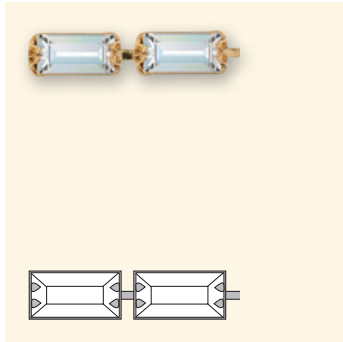
Ordering Example & Product Variety Explanation

<<<

1	27 004	P24	00	C
Material type	Base item number	Stone size	Ring configuration	Back configuration
All Cupchains come in brass unless Sterling is requested. Please consult your customer service representative for special orders.		3-digit code from respective product matrix	00 No Rings	C Closed O Open
1 Brass 2 Sterling				
C1	Z	1028	F	202
Stone pattern	Plating	Base stone art. no.	Foiling	Colour of crystal
A1 Crystal with effect C1 Colour K1 Crystal 02 2 alternate colours 03 3 alternate colours 04 4 alternate colours	Can be added at an additional charge Z No Plating G Gun Metal Plating* S Sterling Silver 15 Mil* 3 Gold 3-5 Mil*	1028 4228 4428 4501	F Foiled	Please see the respective colour chart at the beginning of this chapter for all available code references.
	* Anti nickel allergenic			

Not all configurations are available for all articles. Please refer to the respective product matrix for available combinations.

21 004 Baguette

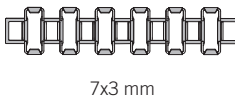


Stone Size		Ring Configuration		Back Configuration		Stone Art. No.
Code	Description	Code	Description	Code	Description	
05M	5x2.5 mm	00	None	C	Closed	4501

Back Configuration	
Code	Description
	Closed

Closed

21 004 Snake Chain

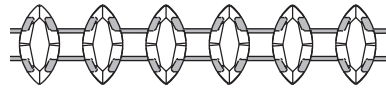
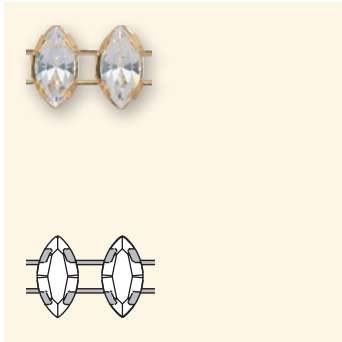


Stone Size		Ring Configuration		Back Configuration		Stone Art. No.
Code	Description	Code	Description	Code	Description	
07M	7x3 mm	00	None	C	Closed	4501

Back Configuration	
Code	Description
	Closed

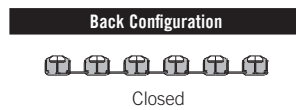
Closed

23 004 Navette Chain

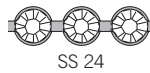
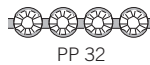


10x5 mm

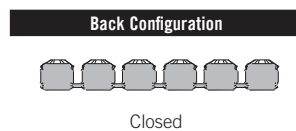
Stone Size		Ring Configuration		Back Configuration		Stone Art. No.
Code	Description	Code	Description	Code	Description	
10M	10x5 mm	00	None	C	Closed	4228



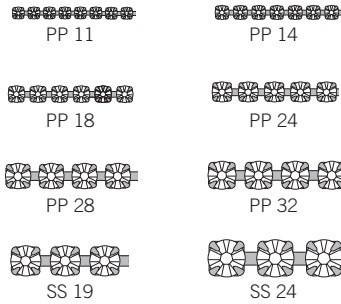
27 000 Bezel Chain



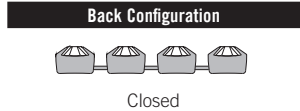
Stone Size		Ring Configuration		Back Configuration		Stone Art. No.
Code	Description	Code	Description	Code	Description	
P18	PP 18	00	None	C	Closed	1028
P24	PP 24	00	None	C	Closed	
P32	PP 32	00	None	C	Closed	
S24	SS 24	00	None	C	Closed	



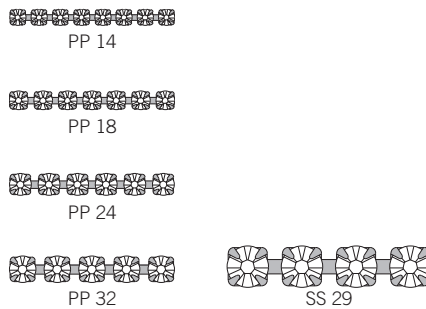
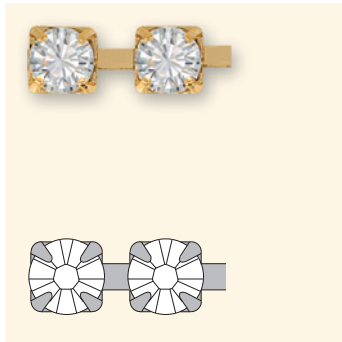
27 004 Round



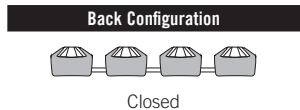
Stone Size		Ring Configuration		Back Configuration		Stone Art. No.
Code	Description	Code	Description	Code	Description	
P11	PP 11	00	None	C	Closed	1028
P14	PP 14	00	None	C	Closed	■
P18	PP 18	00	None	C	Closed	■
P24	PP 24	00	None	C	Closed	■
P28	PP 28	00	None	C	Closed	■
P32	PP 32	00	None	C	Closed	■
S19	SS 19	00	None	C	Closed	■
S24	SS 24	00	None	C	Closed	■



27 104 Round Extended



Stone Size		Ring Configuration		Back Configuration		Stone Art. No.
Code	Description	Code	Description	Code	Description	
P14	PP 14	00	None	C	Closed	1028
P18	PP 18	00	None	C	Closed	■
P24	PP 24	00	None	C	Closed	■
P32	PP 32	00	None	C	Closed	■
S29	SS 29	00	None	C	Closed	■



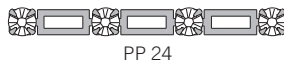
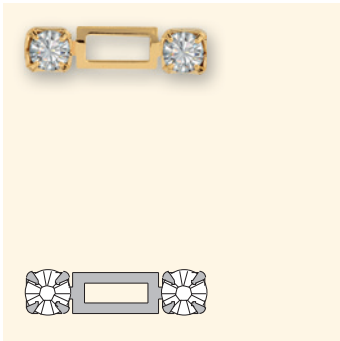
27 204 Round Skip



Stone Size		Ring Configuration		Back Configuration		Stone Art. No.
Code	Description	Code	Description	Code	Description	
P24	PP 24	00	None	C	Closed	1028
P24	PP 24	00	None	O	Open	

Back Configuration	
<p>Closed</p>	
<p>Open</p>	

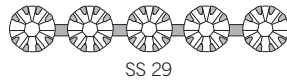
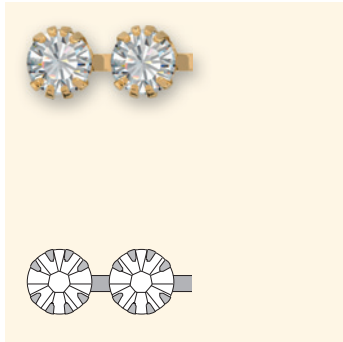
27 2R4 Round String



Stone Size		Ring Configuration		Back Configuration		Stone Art. No.
Code	Description	Code	Description	Code	Description	
P24	PP 24	00	None	C	Closed	1028

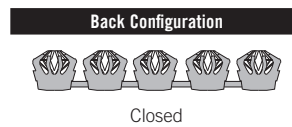
Back Configuration	
<p>Closed</p>	

27 308 Round Tiffany

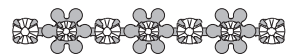
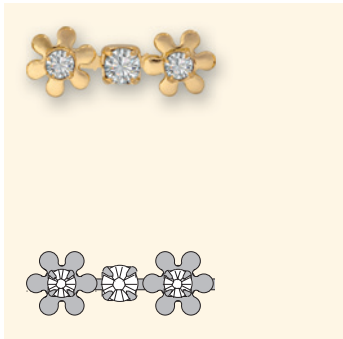


SS 29

Stone Size		Ring Configuration		Back Configuration		Stone Art. No.
Code	Description	Code	Description	Code	Description	
S29	SS 29	00	None	C	Closed	1028

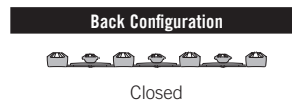


27 404 Round Flower

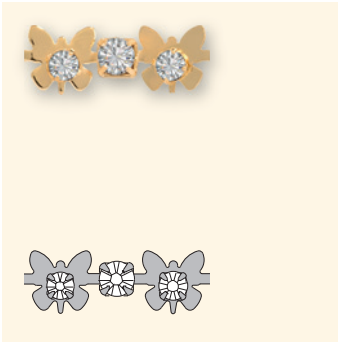


PP 18, PP 24

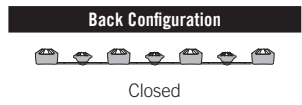
Stone Size		Ring Configuration		Back Configuration		Stone Art. No.
Code	Description	Code	Description	Code	Description	
P18	PP 18, PP 24	00	None	C	Closed	1028



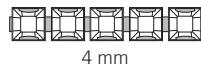
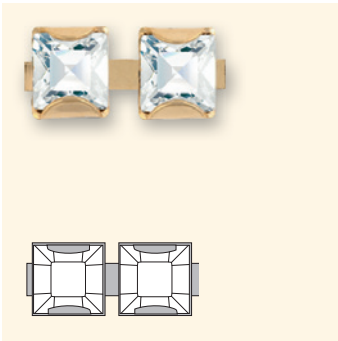
27 4F4 Round Butterfly



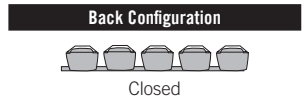
Stone Size		Ring Configuration		Back Configuration		Stone Art. No.
Code	Description	Code	Description	Code	Description	
P18	PP 18, PP 24	00	None	C	Closed	1028



28 002 Square



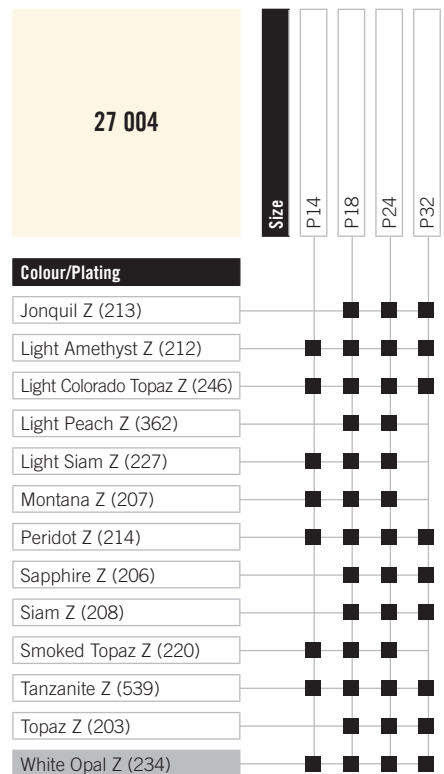
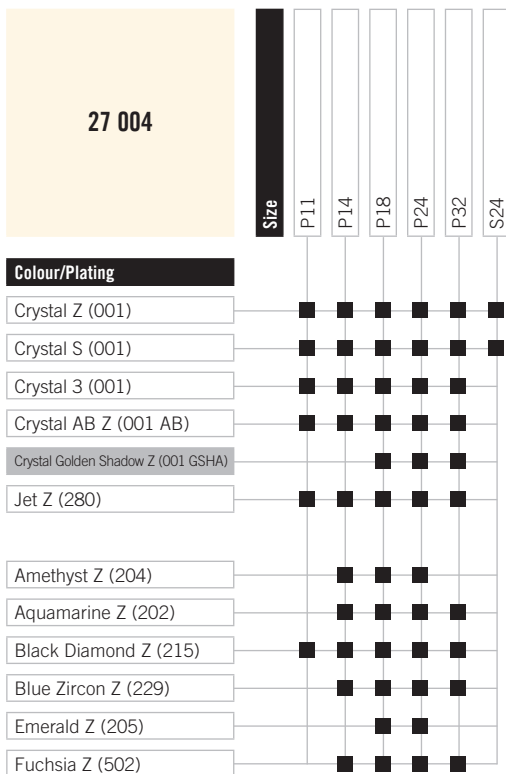
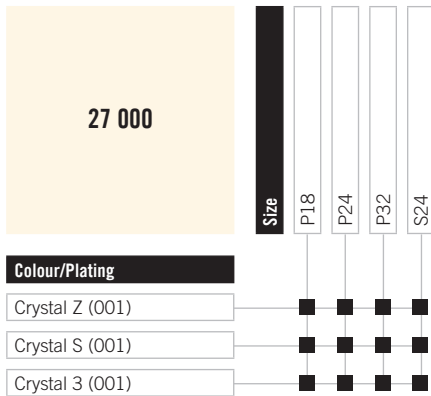
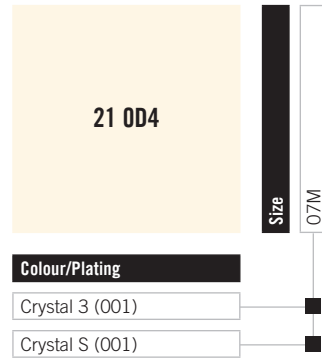
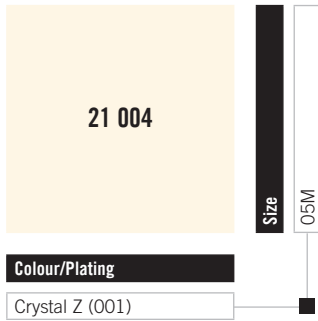
Stone Size		Ring Configuration		Back Configuration		Stone Art. No.
Code	Description	Code	Description	Code	Description	
04M	4 mm	00	None	C	Closed	4428



Stock Programme

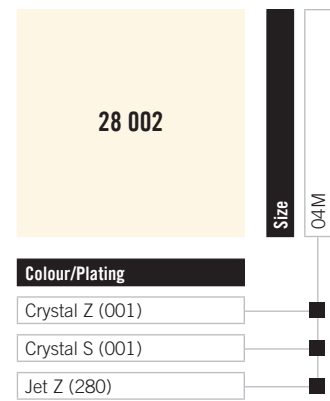
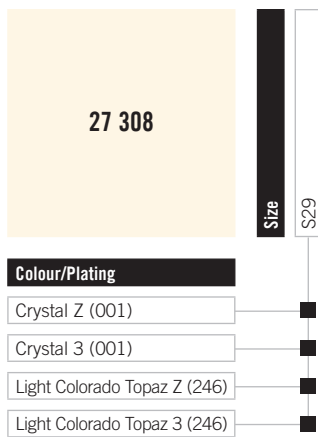
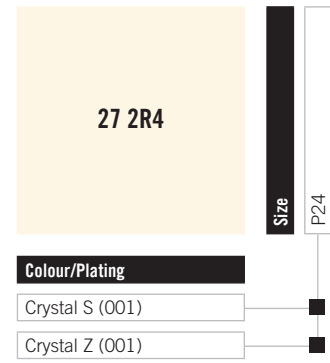
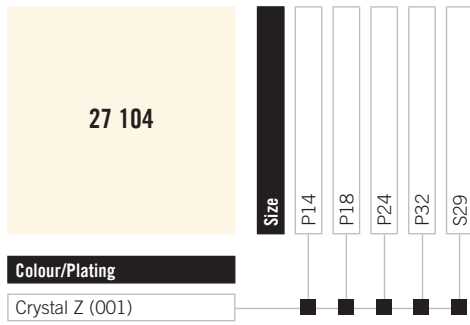


These articles can be delivered ex stock Wattens.



Cupchains & Findings

Cupchains



Product Details

<<<

Article Stone Article Number	Stone Size	Stones per Metre	Stones per Foot
21 004			
4501	5x2.5 mm	143	44
21 004			
4501	7x3 mm	186	57
23 004			
4228	7x3 mm	128	39
27 000			
1028	PP 18	273	83
1028	PP 24	220	67
1028	PP 32	171	52
1028	SS 24	139	42
27 004			
1028	PP 11	392	119
1028	PP 14	344	105
1028	PP 18	273	83
1028	PP 24	222	68
1028	PP 28	182	55
1028	PP 32	169	52
1028	SS 19	139	42
1028	SS 24	139	42
27 104			
1028	PP 14	326	99
1028	PP 18	273	83
1028	PP 24	201	61
1028	PP 32	157	48
1028	SS 29	132	41
27 204			
1028	PP 24	138	42
27 2R4			
1028	PP 24	99	30
27 308			
1028	SS 29	125	38
27 404			
1028	PP 18, PP 24	196	60
27 4F4			
1028	PP 18, PP 24	196	60
28 002			
4428	4 mm	204	62





multi stone SETTINGS

These products incorporate Round- or Fancy Stones, set in special metal forms – such as hearts, circles or navettes. Stretch Bracelets are also part of this group.

Article Explanation - Base Item Number

<<<

37 E00



3	7	E	00
Product category	Stone code (type of stone used)	Setting code	Number of prongs or stones in the setting (always 2 digit code)
3 Multi Stone Settings	7 Round 8 Square	E Stretch Chain 1 Double Setting 2 Heart 3 Navette 7 Circle 9 Triangle	02 03 04 08 10 12 14 20 00 Bezel

Ordering Example & Product Variety Explanation

<<<

1	37 E00	P32	18	C
Material type	Base item number	Stone size	Ring configuration	Back configuration
All Multi Stone Settings come in brass unless Sterling is requested. Please consult your customer service representative for special orders.		3-digit code from respective product matrix.	00 No Rings 17 17 cm 18 18 cm 1T 1 Ring/Top BL Bail TB 2 Rings/Top & Bottom	1 Channel B Bar with hole (2.4 mm) C Closed L Large hole (2.5 mm) O Open

- 1 Brass
- 2 Sterling

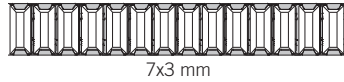
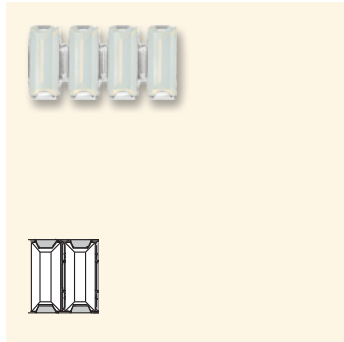
F1	G	1028	F	220
Stone pattern	Plating	Base stone art. no.	Foiling	Colour of crystal
F1 Crystal/colour/effect	Can be added at an additional charge Z No Plating G Gun Metal Plating* S Sterling Silver 15 Mil* 3 Gold 3-5 Mil*	1028 4228 4328 4428 4501	F Foiled	Please see the respective colour chart at the beginning of this chapter for all available code references.

Stretch articles 31E02,
37E00, 37E04 and
38E02 are only available
with plating.

* Anti nickel allergenic

Not all configurations are available for all articles. Please refer to the respective product matrix for available combinations.

31 E02 Snake Chain Stretch Bracelet



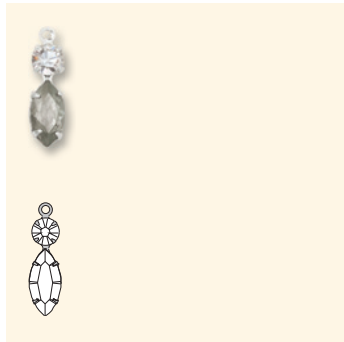
Stone Size		Ring Configuration		Back Configuration		Stone Art. No.	Diameter	
Code	Description	Code	Description	Code	Description	4501		
07M	7x3 mm	17	156.0 mm	C	Closed		■	52.0 mm
07M	7x3 mm	18	170.0 mm	C	Closed		■	55.0 mm

Back Configuration



Closed

33 104 Double Setting



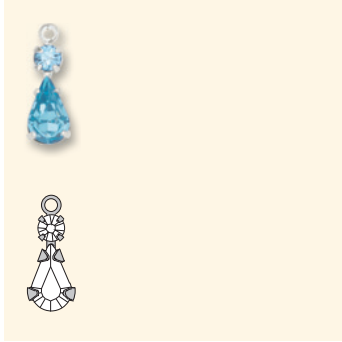
Stone Size		Ring Configuration		Back Configuration		Stone Art. No.		Dimensions
Code	Description	Code	Description	Code	Description	1028	4228	
S19	SS 19, 10x5 mm	1T	1R, Top	C	Closed	■	■	18.4x5.4 mm

Ring Configuration



1T

36 104 Double Setting

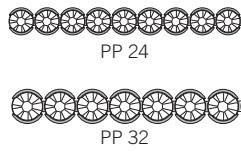


Stone Size		Ring Configuration		Back Configuration		Stone Art. No.		Dimensions
Code	Description	Code	Description	Code	Description			
P24	PP 24, 8x4.8 mm	1T	1R, Top	C	Closed	1028	4328	14.5x5.1 mm

Ring Configuration

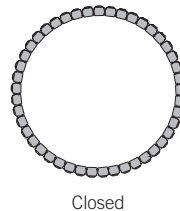


37 E00 Bezel Stretch Chain



Stone Size		Ring Configuration		Back Configuration		Stone Art. No.	Diameter
Code	Description	Code	Description	Code	Description		
P24	PP 24	17	158.8 mm	C	Closed	1028	50.8 mm
P24	PP 24	18	177.8 mm	C	Closed		54.0 mm
P32	PP 32	17	156 mm	C	Closed		52.0 mm
P32	PP 32	18	170 mm	C	Closed		55.0 mm

Back Configuration



37 E04 Stretch Chain



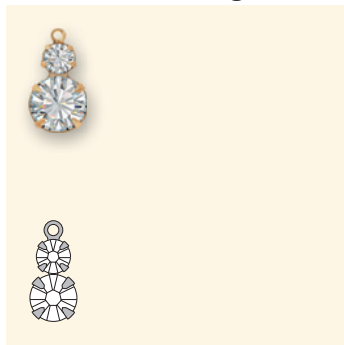
Stone Size		Ring Configuration		Back Configuration		Stone Art. No.	Diameter
Code	Description	Code	Description	Code	Description		
P24	PP 24	17	152.4 mm	C	Closed	1028	45.7 mm
P24	PP 24	18	177.8 mm	C	Closed		55.1 mm
P32	PP 32	17	158.7 mm	C	Closed		48.3 mm
P32	PP 32	18	173.0 mm	C	Closed		53.3 mm

Back Configuration



Closed

37 102 Double Setting



Stone Size		Ring Configuration		Back Configuration		Stone Art. No.		Dimensions
Code	Description	Code	Description	Code	Description			
S29	SS 19, SS 29	1T	1R, Top	C	Closed	1028	1028	133x86.6 mm
S39	SS 19, SS 39	1T	1R, Top	C	Closed			115.8x71.1 mm

Ring Configuration

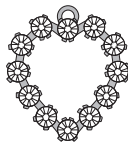


1T

37 212 Heart



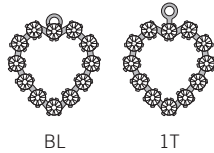
PP 14
13x12.5 mm



PP 24
18x16.4 mm

Stone Size		Ring Configuration		Back Configuration		Stone Art. No.	Dimensions
Code	Description	Code	Description	Code	Description		
P14	PP 14	1T	1R, Top	O	Open	1028	13x12.5 mm
P24	PP 24	BL	Bail	O	Open		18x16.4 mm

Ring Configuration



BL

1T

37 310 Navette



PP 14
13x9.7 mm

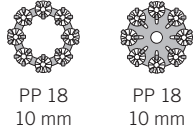
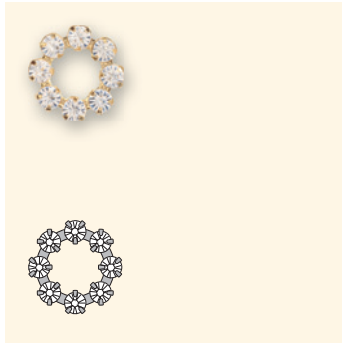
Stone Size		Ring Configuration		Back Configuration		Stone Art. No.	Dimensions
Code	Description	Code	Description	Code	Description		
P14	PP 14	00	None	O	Open	1028	13x9.7 mm
P14	PP 14	TB	2R, Top/Bottom	O	Open		13x9.7 mm

Ring Configuration

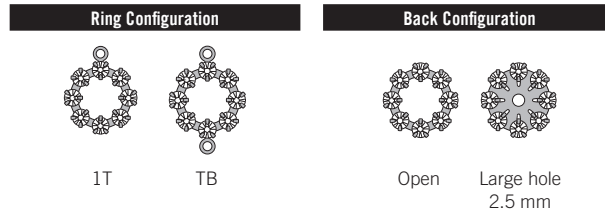


TB

37 708 Circle



Stone Size		Ring Configuration		Back Configuration		Stone Art. No.	Diameter	
Code	Description	Code	Description	Code	Description	1028		
P18	PP 18	00	None	O	Open		■	10 mm
P18	PP 18	00	None	L	Large hole (2.5 mm)		■	10 mm
P18	PP 18	1T	1R, Top	O	Open		■	10 mm
P18	PP 18	TB	2R, Top/Bottom	O	Open		■	10 mm



37 710 Circle







PP 18
11.5 mm

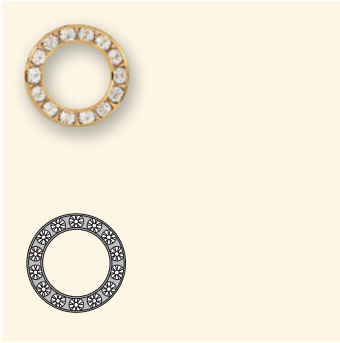


PP 18
12.3 mm

Stone Size		Ring Configuration		Back Configuration		Stone Art. No.	Diameter
Code	Description	Code	Description	Code	Description		
P18	PP 18	00	None	1	Channel	1028	12.3 mm
P18	PP 18	1T	1R, Top	O	Open		11.5 mm
P24	PP 24	00	None	B	Bar w. hole (2.4 mm)		16 mm


Ring Configuration	Back Configuration	
 1T		
	 Bar w. hole 2.4 mm	

37 714 Circle

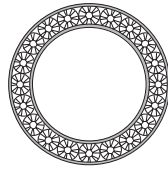
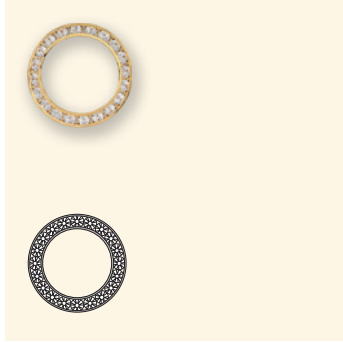


PP 18
15.6 mm

Stone Size		Ring Configuration		Back Configuration		Stone Art. No.	Diameter
Code	Description	Code	Description	Code	Description		
P18	PP 18	00	None	1	Channel	1028	15.6 mm

Back Configuration
 Channel

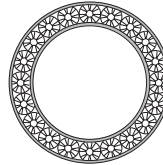
37 720 Circle



PP 18
21.4 mm

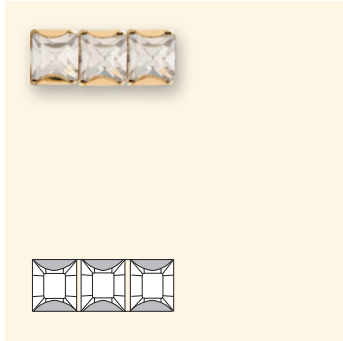
Stone Size		Ring Configuration		Back Configuration		Stone Art. No.	Diameter
Code	Description	Code	Description	Code	Description	1028	21.4 mm
P18	PP 18	00	None	1	Channel		

Back Configuration



Channel

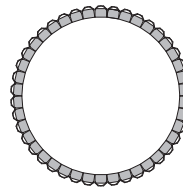
38 E02 Square Stretch Chain



4mm

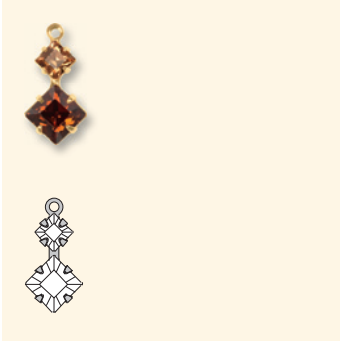
Stone Size		Ring Configuration		Back Configuration		Stone Art. No.	Diameter
Code	Description	Code	Description	Code	Description	4428	52.0 mm
04M	4 mm	17	156.0 mm	C	Closed		
04M	4 mm	18	170.0 mm	C	Closed		55.0 mm

Back Configuration



Closed

38 104 Double Setting



4 mm
6 mm

Stone Size		Ring Configuration		Back Configuration		Stone Art. No.		Dimensions
Code	Description	Code	Description	Code	Description			
04M	4 mm, 6 mm	1T	1R, Top	C	Closed	4428	4428	16.8x8.5 mm

Ring Configuration

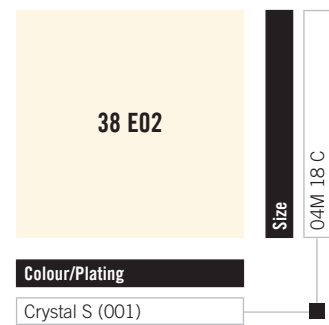
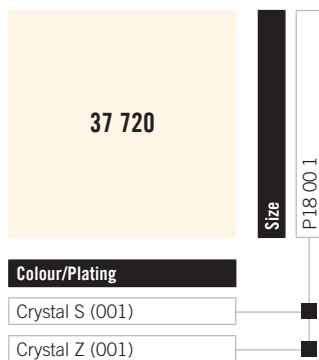
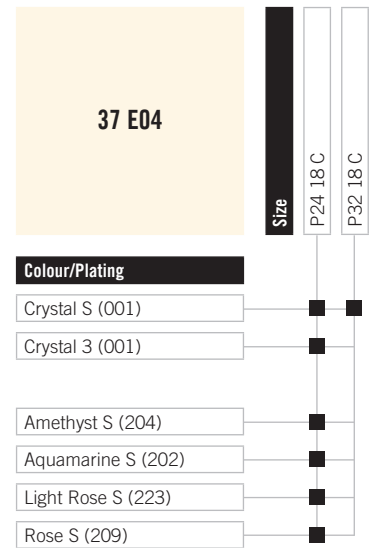
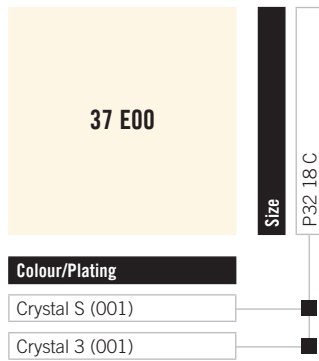


1T

Stock Programme



These articles can be delivered ex stock Wattens.





fancy multi SETTINGS

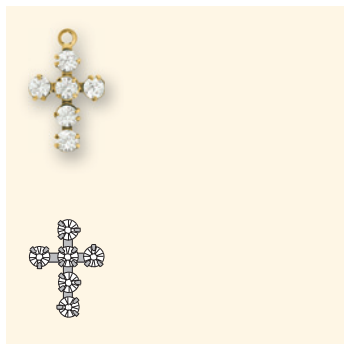
Fancy Multi Settings are Round- or Fancy Stones set in special metal cups such as crosses or balls. The Rondelle Balls are also part of this group.



Article Explanation - Base Item Number

<<<

47 206



4	7	2	06
Product category	Stone code (type of stone used)	Setting code	Number of stones in the setting (always 2-digit code)
4 Fancy Multi Settings	1 Baguette 7 Round	1 Spoke 2 Cross 3 Flower cluster 4 Rondelle Ball 5 Ball 6 Graduated	03 05 06 08 10 11 12

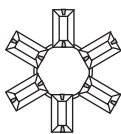
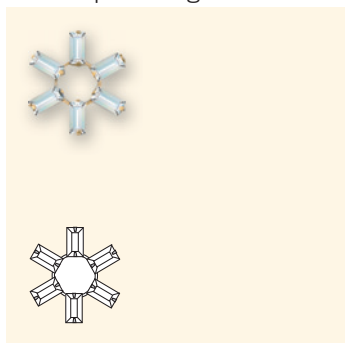
Ordering Example & Product Variety Explanation

<<<

1	47 206	P24	1T	C
Material type	Base item number	Stone size	Ring configuration	Back configuration
All Fancy Multi Settings come in brass unless Sterling is requested. Please consult your customer service representative for special orders.		3-digit code from respective product matrix	00 No Rings 1T 1 Ring/Top TB 2 Rings/Top & Bottom	C Closed H Hole (1 mm) O Open
1 Brass 2 Sterling				
F1	S	1028	F	001 AB
Stone pattern	Plating	Base stone art. no.	Foiling	Colour of crystal
F1 Crystal/colour/effect	Can be added at an additional charge. Z No Plating G Gun Metal Plating* S Sterling Silver 15 Mil* 3 Gold 3-5 Mil* Rivoli Cross art. 42211 is only available with plating. * Anti nickel allergenic	1028 1122 4428 4501	F Foiled	Please see the respective colour chart at the beginning of this chapter for all available code references.

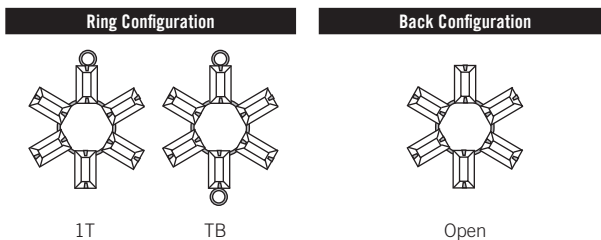
Not all configurations are available for all articles. Please refer to the respective product matrix for available combinations.

41 106 Spoke Baguette

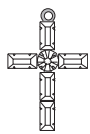
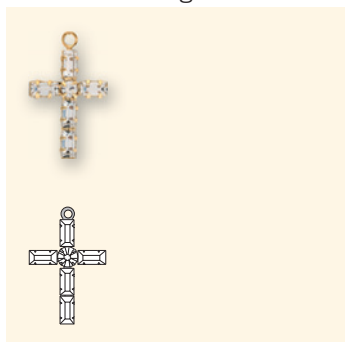


5x2.5 mm
16.3 mm

Stone Size		Ring Configuration		Back Configuration		Stone Art. No.	Outside Diameter	
Code	Description	Code	Description	Code	Description	4501		
05M	5x2.5 mm	00	None	O	Open		■	16.3 mm
05M	5x2.5 mm	1T	1R, Top	O	Open		■	16.3 mm
05M	5x2.5 mm	TB	2R, Top/Bottom	O	Open		■	16.3 mm



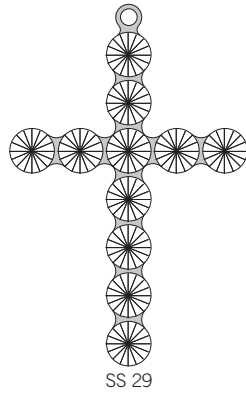
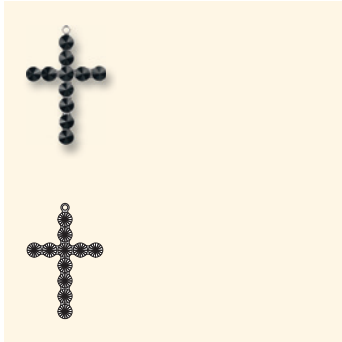
41 205 Cross Baguette



4x2 mm
16x11.5 mm

Stone Size		Ring Configuration		Back Configuration		Stone Art. No.	Dimensions
Code	Description	Code	Description	Code	Description	4501 1028	
04M	4x2 mm, PP 18	1T	1R, Top	C	Closed		■

42 211 Rivoli Cross



SS 29

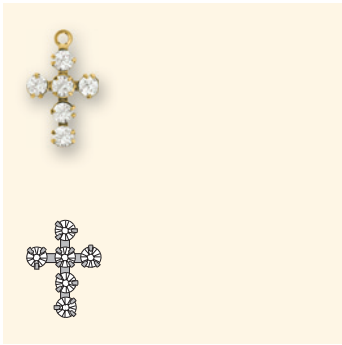
Stone Size		Ring Configuration		Back Configuration		Stone Art. No.	Dimensions
Code	Description	Code	Description	Code	Description	1122	51.5x34 mm
S29	SS 29	1T	1R, Top	C	Closed		

Ring Configuration

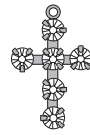


1T

47 206 Cross Round



PP 18
12x9 mm



PP 24
15.1x11.1 mm

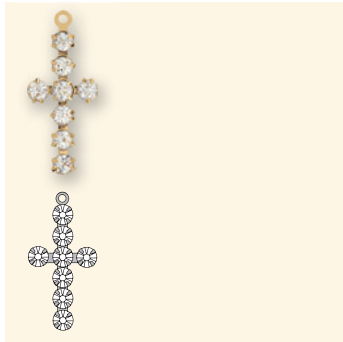
Stone Size		Ring Configuration		Back Configuration		Stone Art. No.	Dimensions
Code	Description	Code	Description	Code	Description	1028	
P18	PP 18	1T	1R, Top	C	Closed		12x9 mm
P24	PP 24	1T	1R, Top	C	Closed		15.1x11.1 mm

Ring Configuration



1T

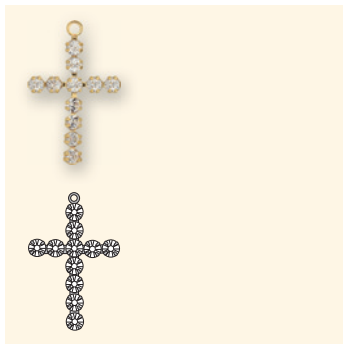
47 208 Cross Round



PP 24
22.6x11.2 mm

Stone Size		Ring Configuration		Back Configuration		Stone Art. No.	Dimensions
Code	Description	Code	Description	Code	Description	1028	22.6x11.2 mm
P24	PP 24	1T	1R, Top	C	Closed		

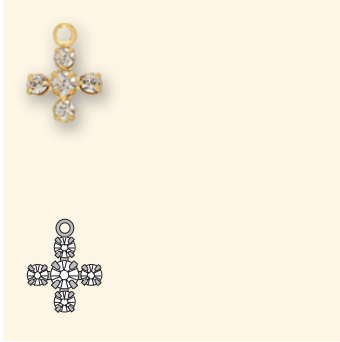
47 211 Cross Round



PP 18
20x14.5 mm

Stone Size		Ring Configuration		Back Configuration		Stone Art. No.	Dimensions
Code	Description	Code	Description	Code	Description	1028	20x14.5 mm
P18	PP 18	1T	1R, Top	C	Closed		

47 305 Flower Cluster Round



PP 18, PP 24
8.6 mm

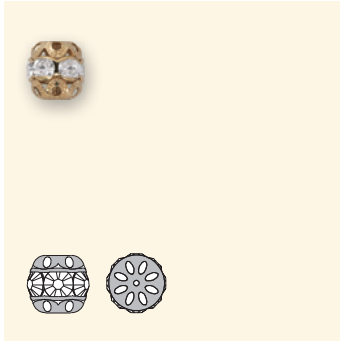
Stone Size		Ring Configuration		Back Configuration		Stone Art. No.		Outside Diameter
Code	Description	Code	Description	Code	Description			
P18	PP 18, PP 24	1T	1R, Top	C	Closed	1028	1028	8.6 mm

Ring Configuration



1T

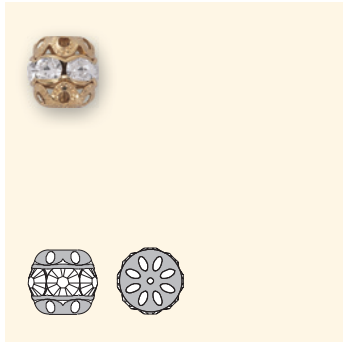
47 406 Rondelle 6 mm Ball



PP 20
6 mm

Stone Size		Ring Configuration		Back Configuration		Stone Art. No.		Outside Diameter
Code	Description	Code	Description	Code	Description			
P20	PP 20	00	None	C	Closed	1028		6 mm

47 408 Rondelle 8 mm Ball



PP 28
8 mm

Stone Size		Ring Configuration		Back Configuration		Stone Art. No.	Outside Diameter
Code	Description	Code	Description	Code	Description		
P28	PP 28	00	None	C	Closed	1028	8 mm

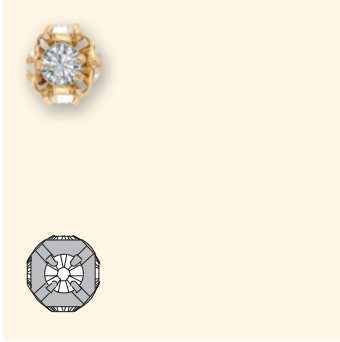
47 410 Rondelle 10 mm Ball



PP 31
10 mm

Stone Size		Ring Configuration		Back Configuration		Stone Art. No.	Outside Diameter
Code	Description	Code	Description	Code	Description		
P31	PP 31	00	None	C	Closed	1028	10 mm

47 505 Ball 5 mm Round



PP 18
5 mm

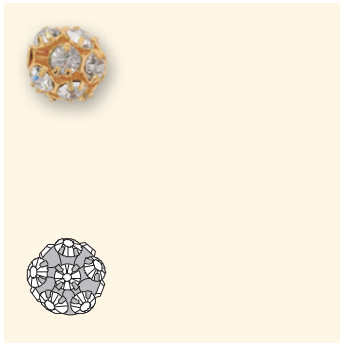
Stone Size		Ring Configuration		Back Configuration		Stone Art. No.	Outside Diameter	
Code	Description	Code	Description	Code	Description	1028		
P18	PP 18	00	None	C	Closed		■	5 mm
P18	PP 18	1T	1R, Top	C	Closed		■	5 mm

Ring Configuration



1T

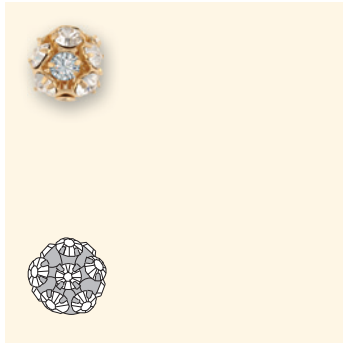
47 508 Ball 8 mm Round



PP 24
8 mm

Stone Size		Ring Configuration		Back Configuration		Stone Art. No.	Outside Diameter
Code	Description	Code	Description	Code	Description	1028	
P24	PP 24	00	None	H	Hole		■

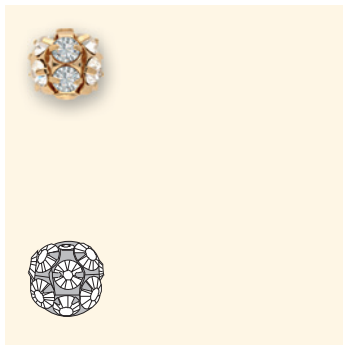
47 510 Ball 10 mm Round



PP 32
10 mm

Stone Size		Ring Configuration		Back Configuration		Stone Art. No.	Outside Diameter
Code	Description	Code	Description	Code	Description		
P32	PP 32	00	None	H	Hole	1028	10 mm

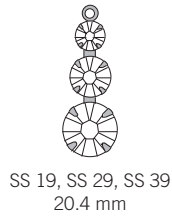
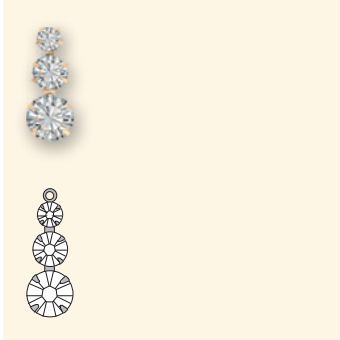
47 512 Ball 12 mm Round



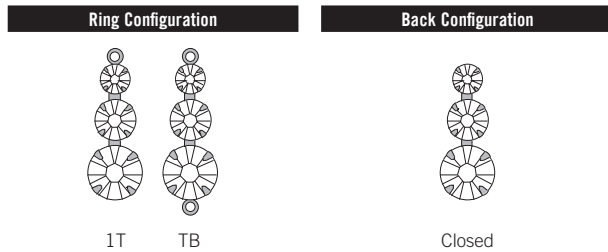
SS 19
12 mm

Stone Size		Ring Configuration		Back Configuration		Stone Art. No.	Outside Diameter
Code	Description	Code	Description	Code	Description		
S19	SS 19	00	None	H	Hole	1028	12 mm

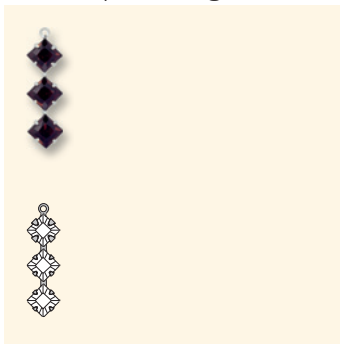
47 603 Graduated Setting Round



Stone Size		Ring Configuration		Back Configuration		Stone Art. No.			Outside Diameter
Code	Description	Code	Description	Code	Description	1028	1028	1028	
S19	SS 19, SS 29, SS 39	1T	1R, Top	C	Closed	■	■	■	20.4 mm
S19	SS 19, SS 29, SS 39	TB	2R, Top/Bottom	C	Closed	■	■	■	20.4 mm



48 603 Triple Setting



Stone Size		Ring Configuration		Back Configuration		Stone Art. No.			Dimensions
Code	Description	Code	Description	Code	Description	4428	4428	4428	
06M	6 mm, 6 mm, 6 mm	1T	1R, Top	C	Closed	■	■	■	29.5x8.6 mm



Stock Programme



These articles can be delivered ex stock Wattens.

47 406

Size P20 00 C

Colour/Plating

- Crystal Z (001)
- Crystal S (001)
- Crystal 3 (001)
- Crystal AB S (001 AB)

47 408

Size P28 00 C

Colour/Plating

- Crystal Z (001)
- Crystal S (001)

47 410

Size P31 00 C

Colour/Plating

- Crystal 3 (001)
- Crystal S (001)

47 505

Size P18 00 C

Colour/Plating

- Crystal S (001)

47 508

Size P24 00 H

Colour/Plating

- Crystal Z (001)
- Crystal S (001)
- Crystal 3 (001)
- Crystal AB S (001 AB)

47 510

Size P32 00 H

Colour/Plating

- Crystal S (001)

47 512

Size S19 00 H

Colour/Plating

- Crystal S (001)

47 603

Size S19 11 C

Colour/Plating

- Crystal S (001)





channels

These products are single Round - or Fancy Stones without foiling that are fitted with a metal ring around the girdle of the stone. This gives the channels its typical feature: the viewer is able to look "through" the Round or Fancy Stones. A range of exclusive channels denoted with the letter "A" in the article number, represent articles with an even greater processing quality than the standard channels.



Article Explanation - Base Item Number

<<<

57 700 Round



5	7	7	00
Product category	Stone code (type of stone used)	Setting code	Number of stones in the setting (always 2-digit code)
5 Channels	2 Heart 3 Navette 5 Oval 7 Round 8 Square	A Exclusive 2 Heart 3 Navette 5 Oval 7 Round	00

Ordering Example & Product Variety Explanation

<<<

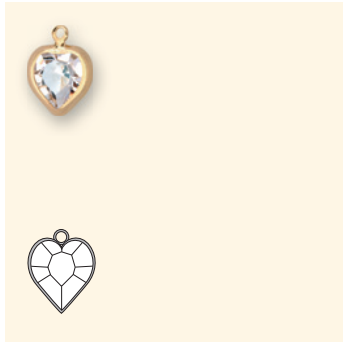
1	57 700	P32	TB	O
Material type	Base item number	Stone size	Ring configuration	Back configuration
All Channels come in brass unless Sterling is requested. Please consult your customer service representative for special orders.		3-digit code from respective product matrix	1T 1 Ring/Top TB 2 Rings/Top & Bottom	O Open

- 1 Brass
- 2 Sterling

F1	3	1128	542
Stone pattern	Plating	Base stone art. no.	Colour of crystal
F1 Crystal/colour/effect	Can be added at an additional charge. Z No Plating G Gun Metal Plating* S Sterling Silver 15 Mil* 3 Gold 3-5 Mil* <small>* Anti nickel allergenic</small>	1028 1122 1128 4120 4128 4228 4428 4800	Please see the respective colour chart at the beginning of this chapter for all available code references.

Not all configurations are available for all articles. Please refer to the respective product matrix for available combinations.

52 200 Heart



8.8x8 mm

Stone Size		Ring Configuration		Back Configuration		Stone Art. No.
Code	Description	Code	Description	Code	Description	
08M	8.8x8 mm	1T	1R, Top	O	Open	4800



53 300 Navette

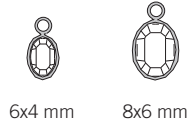


10x5 mm

Stone Size		Ring Configuration		Back Configuration		Stone Art. No.
Code	Description	Code	Description	Code	Description	
10M	10x5 mm	1T	1R, Top	O	Open	4228
10M	10x5 mm	TB	2R, Top/Bottom	O	Open	



55 500 Oval



Stone Size		Ring Configuration		Back Configuration		Stone Art. No.	
Code	Description	Code	Description	Code	Description	4128	4120
06M	6x4 mm	1T	1R, Top	O	Open	■	■
06M	6x4 mm	TB	2R, Top/Bottom	O	Open	■	■
08M	8x6 mm	1T	1R, Top	O	Open	■	■
08M	8x6 mm	TB	2R, Top/Bottom	O	Open	■	■

Ring Configuration		Back Configuration	
1T	TB	Open	Open

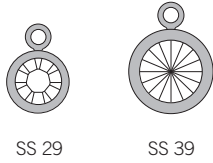
57 A00 Round



Stone Size		Ring Configuration		Back Configuration		Stone Art. No.	
Code	Description	Code	Description	Code	Description	1028	1128
P32	PP 32	TB	2R, Top/Bottom	O	Open	■	■
S24	SS 24	TB	2R, Top/Bottom	O	Open	■	■
S29	SS 29	TB	2R, Top/Bottom	O	Open	■	■

Ring Configuration		Back Configuration	
TB	Open	Open	Open

57 700 Round



Stone Size		Ring Configuration		Back Configuration		Stone Art. No.	
Code	Description	Code	Description	Code	Description	1122	1128
S29	SS 29	1T	1R, Top	O	Open	■	■
S29	SS 29	TB	2R, Top/Bottom	O	Open	■	■
S39	SS 39	1T	1R, Top	O	Open	■	■
S39	SS 39	TB	2R, Top/Bottom	O	Open	■	■

Ring Configuration		Back Configuration	
1T	TB	Open	

58 A00 Square



Stone Size		Ring Configuration		Back Configuration		Stone Art. No.	
Code	Description	Code	Description	Code	Description	4428	
04M	4 mm	TB	2R, Top/Bottom	O	Open	■	

Ring Configuration		Back Configuration	
TB		Open	

Stock Programme



These articles can be delivered ex stock Wattens.

57 700	Size	S29 ITO
	Colour/Plating	
	Crystal Z (001)	<input type="checkbox"/>
	Crystal S (001)	<input type="checkbox"/>
	Crystal 3 (001)	<input type="checkbox"/>



METAL BUTTONS & *filigrees*

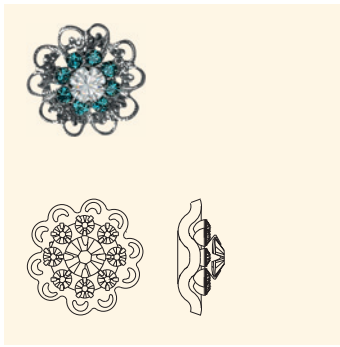
These products are Round- and Fancy Stones that are combined with metal components to form the shape of a Button or Filigree. Filigrees, starting with article number 62000, also include Beads and Pendants and shapes like flowers, crosses or stars. In addition, these special products are also available with antique gold and antique silver plating.



Ordering Example & Product Variety Explanation

<<<

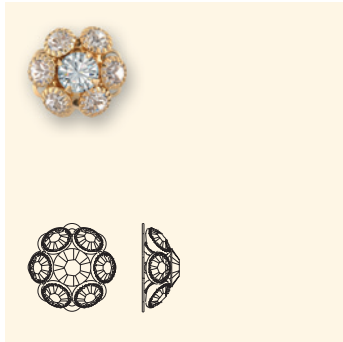
62 000



1	62 000	S24	00	C
Material type	Base item number	Stone size	Ring configuration	Back configuration
All Metal Buttons & Filigrees come in brass unless Sterling is requested. Please consult your customer service representative for special orders.	Number above product picture 60 Metal Buttons 61 Metal Buttons 62 Filigrees	3-digit code from respective product matrix	00 No Rings 1T 1 Ring/Top TB 2 Rings/Top & Bottom	C Closed
1 Brass 2 Sterling				
F1	A	1028	F	001 229
Stone pattern	Plating	Base stone art. no.	Foiling	Colour of crystal
F1 Crystal/colour/effect	Can be added at an additional charge. Z No Plating A Antique Gold** B Antique Silver** G Gun Metal Plating* S Sterling Silver 15 Mil* 3 Gold 3-5 Mil* <small>* Anti nickel allergenic ** Only available for Filigrees</small>	1028 1128 4120 4128 4228 4501 5000 5305 5328 5500	F Foiled	Please see the respective colour chart at the beginning of this chapter for all available code references. The articles are built from bottom up and outside in.

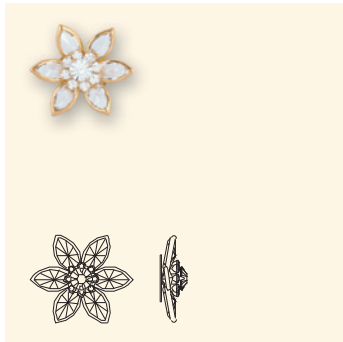
Not all configurations are available for all articles. Please refer to the respective product matrix for available combinations.

60 323 Metal Button



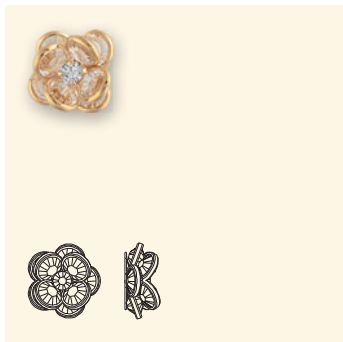
Stone Size		Ring Configuration		Back Configuration		Stone Art. No.		
Code	Description	Code	Description	Code	Description			
P32	PP 32, SS 24	00	None	C	Closed	1028	1028	1028

60 377 Metal Button



Stone Size		Ring Configuration		Back Configuration		Stone Art. No.		
Code	Description	Code	Description	Code	Description			
10M	10x5 mm, SS 24, PP 18	00	None	C	Closed	4228	1028	1028

60 408 Metal Button



Stone Size		Ring Configuration		Back Configuration		Stone Art. No.		
Code	Description	Code	Description	Code	Description			
S29	SS 29, SS 29, PP 32	00	None	C	Closed	1128	1128	1028

60 440 Metal Button



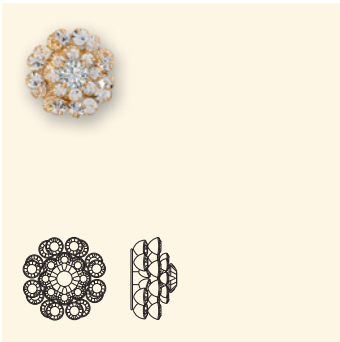
Stone Size		Ring Configuration		Back Configuration		Stone Art. No.		
Code	Description	Code	Description	Code	Description			
10M	10x5 mm, 6x4 mm, PP 32	00	None	C	Closed	4228	4120	1028

60 441 Metal Button



Stone Size		Ring Configuration		Back Configuration		Stone Art. No.		
Code	Description	Code	Description	Code	Description			
06M	6x4 mm, PP 32	00	None	C	Closed	4128	1028	

60 444 Metal Button



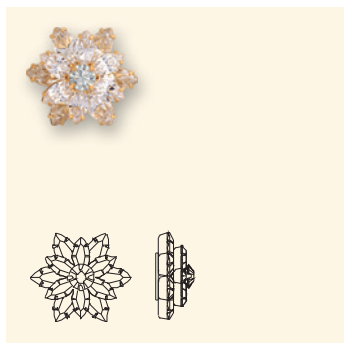
Stone Size		Ring Configuration		Back Configuration		Stone Art. No.			
Code	Description	Code	Description	Code	Description				
P24	PP 24, PP 24, PP 18, SS 24	00	None	C	Closed	1028	1028	1028	1028

60 445 Metal Button



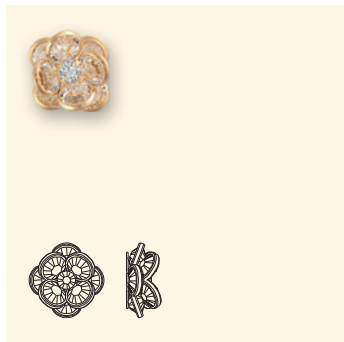
Stone Size		Ring Configuration		Back Configuration		Stone Art. No.		
Code	Description	Code	Description	Code	Description			
08M	8x4 mm, PP 18, SS 24	00	None	C	Closed	4228	1028	1028

60 450 Metal Button



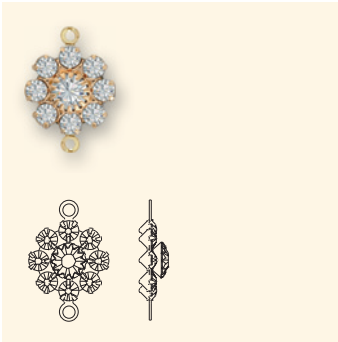
Stone Size		Ring Configuration		Back Configuration		Stone Art. No.		
Code	Description	Code	Description	Code	Description			
10M	10x5 mm, 8x4 mm, SS 24	00	None	C	Closed	4228	4228	1028

60 478 Metal Button



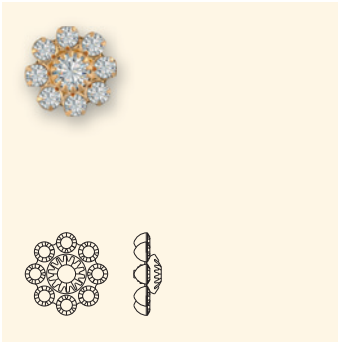
Stone Size		Ring Configuration		Back Configuration		Stone Art. No.		
Code	Description	Code	Description	Code	Description			
S29	SS 29, SS 29, PP 32	00	None	C	Closed	1128	1128	1028

60 879 Metal Button



Stone Size		Ring Configuration		Back Configuration		Stone Art. No.	
Code	Description	Code	Description	Code	Description		
P18	PP 18, PP 32	TB	2R, Top/Bottom	C	Closed	1028	1028

60 880 Metal Button



Stone Size		Ring Configuration		Back Configuration		Stone Art. No.	
Code	Description	Code	Description	Code	Description		
P18	PP 18, PP 32	00	None	C	Closed	1028	1028

60 881 Metal Button



Stone Size		Ring Configuration		Back Configuration		Stone Art. No.	
Code	Description	Code	Description	Code	Description		
P18	PP 18, PP 32	1T	1R, Top	C	Closed	1028	1028

61 019 Metal Button



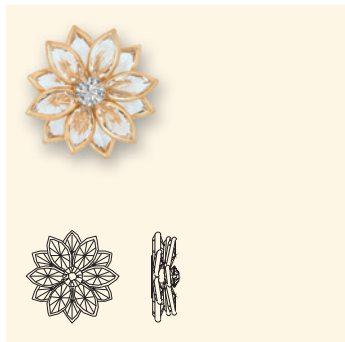
Stone Size		Ring Configuration		Back Configuration		Stone Art. No.		
Code	Description	Code	Description	Code	Description			
P32	PP 32, PP 32, PP 24	00	None	C	Closed	1028	1028	1028

61 042 Metal Button



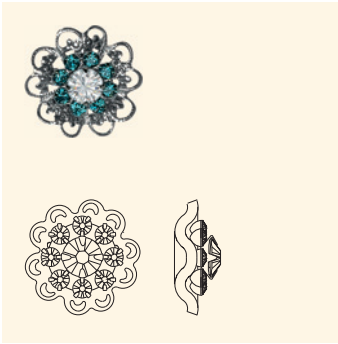
Stone Size		Ring Configuration		Back Configuration		Stone Art. No.		
Code	Description	Code	Description	Code	Description			
P24	PP 24, PP 18, SS 24	00	None	C	Closed	1028	1028	1028

61 111 Metal Button



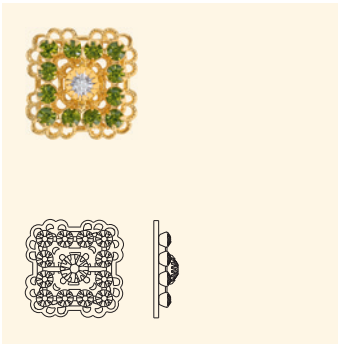
Stone Size		Ring Configuration		Back Configuration		Stone Art. No.		
Code	Description	Code	Description	Code	Description			
10M	10x5 mm, 10x5 mm, SS 24	00	None	C	Closed	4228	4228	1028

62 000 Filigree



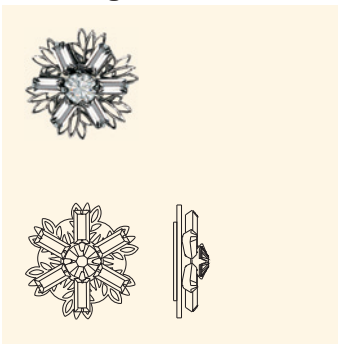
Stone Size		Ring Configuration		Back Configuration		Stone Art. No.	
Code	Description	Code	Description	Code	Description		
S24	PP 18, SS 24	00	None	C	Closed	1028	1028

62 001 Filigree



Stone Size		Ring Configuration		Back Configuration		Stone Art. No.	
Code	Description	Code	Description	Code	Description		
P24	PP 24, SS 24	00	None	C	Closed	1028	1028

62 002 Filigree



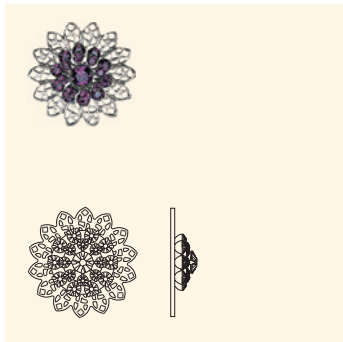
Stone Size		Ring Configuration		Back Configuration		Stone Art. No.	
Code	Description	Code	Description	Code	Description		
S24	5x2.5 mm, SS 24	00	None	C	Closed	4501	1028

62 003 Filigree



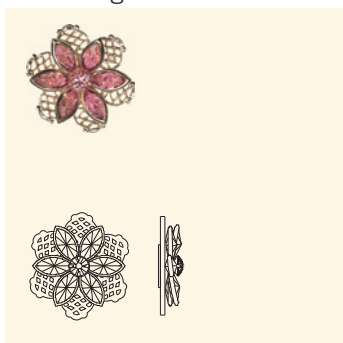
Stone Size		Ring Configuration		Back Configuration		Stone Art. No.		
Code	Description	Code	Description	Code	Description			
S24	8x4 mm, SS 24	00	None	C	Closed	4228	1028	

62 004 Filigree



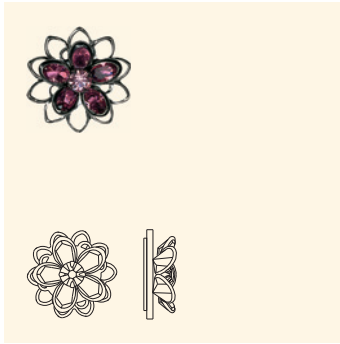
Stone Size		Ring Configuration		Back Configuration		Stone Art. No.		
Code	Description	Code	Description	Code	Description			
S24	PP 24, PP 18, SS 24	00	None	C	Closed	1028	1028	1028

62 005 Filigree



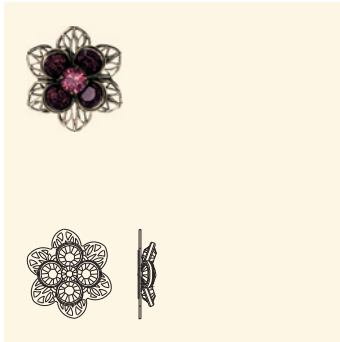
Stone Size		Ring Configuration		Back Configuration		Stone Art. No.		
Code	Description	Code	Description	Code	Description			
S24	10x5 mm, SS 24	00	None	C	Closed	4228	1028	

62 006 Filigree



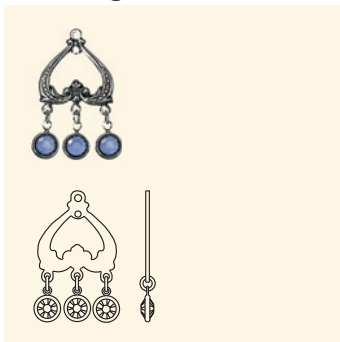
Stone Size		Ring Configuration		Back Configuration		Stone Art. No.	
Code	Description	Code	Description	Code	Description		
P32	6x4 mm, PP 32	00	None	C	Closed	4120	1028

62 007 Filigree



Stone Size		Ring Configuration		Back Configuration		Stone Art. No.	
Code	Description	Code	Description	Code	Description		
S24	SS 29, SS 24	00	None	C	Closed	1128	1028

62 008 Filigree



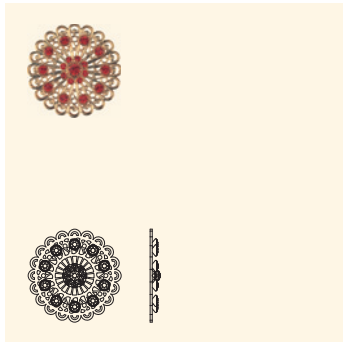
Stone Size		Ring Configuration		Back Configuration		Stone Art. No.	
Code	Description	Code	Description	Code	Description		
S29	SS 29	00	None	C	Closed	1128	

62 009 Filigree



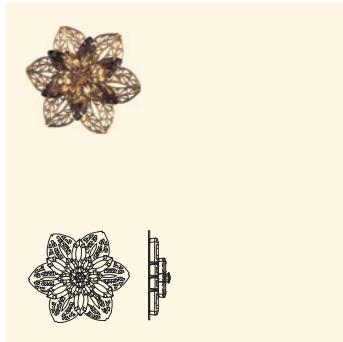
Stone Size		Ring Configuration		Back Configuration		Stone Art. No.		
Code	Description	Code	Description	Code	Description			
05M	5 mm, 9x6 mm, 5 mm	00	None	C	Closed	5305	5500	5328

62 010 Filigree



Stone Size		Ring Configuration		Back Configuration		Stone Art. No.		
Code	Description	Code	Description	Code	Description			
P32	PP 32, PP 18, SS 24	00	None	C	Closed	1028	1028	1028

62 011 Filigree



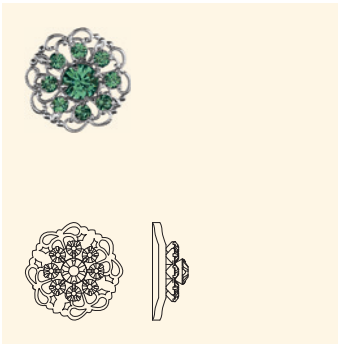
Stone Size		Ring Configuration		Back Configuration		Stone Art. No.		
Code	Description	Code	Description	Code	Description			
15M	15x7 mm, 10x5 mm, SS 29	00	None	C	Closed	4228	4228	1028

62 012 Filigree



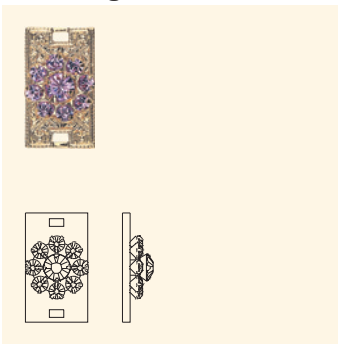
Stone Size		Ring Configuration		Back Configuration		Stone Art. No.	
Code	Description	Code	Description	Code	Description		
P18	PP 18, PP 32	00	None	C	Closed	1028	1028

62 013 Filigree



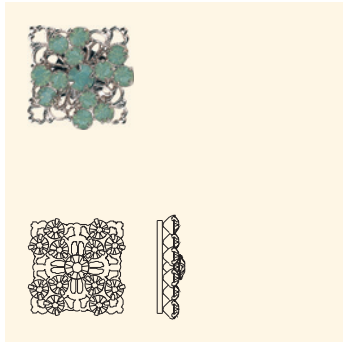
Stone Size		Ring Configuration		Back Configuration		Stone Art. No.	
Code	Description	Code	Description	Code	Description		
P18	PP 18, SS 24	00	None	C	Closed	1028	1028

62 014 Filigree



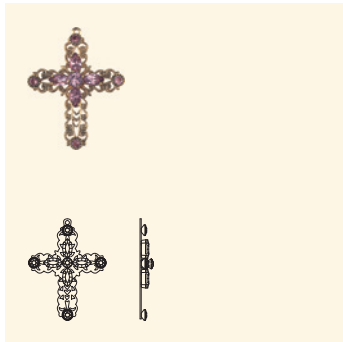
Stone Size		Ring Configuration		Back Configuration		Stone Art. No.	
Code	Description	Code	Description	Code	Description		
P18	PP 18, PP 32	00	None	C	Closed	1028	1028

62 015 Filigree



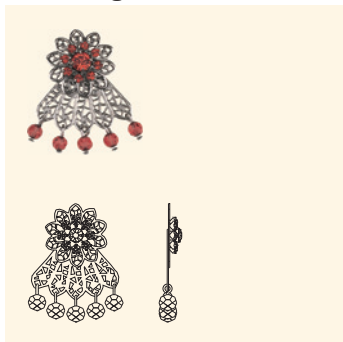
Stone Size		Ring Configuration		Back Configuration		Stone Art. No.		
Code	Description	Code	Description	Code	Description			
P24	PP 24, PP 32	00	None	C	Closed	1028	1028	

62 016 Filigree



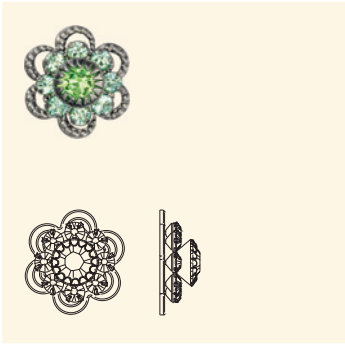
Stone Size		Ring Configuration		Back Configuration		Stone Art. No.		
Code	Description	Code	Description	Code	Description			
P32	PP 32, 8x4 mm, SS 24	00	None	C	Closed	1028	4228	1028

62 017 Filigree



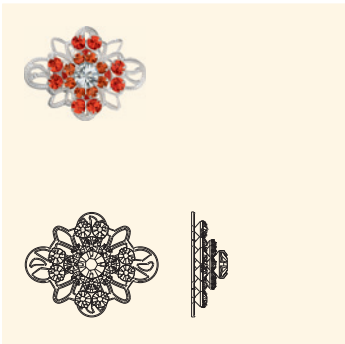
Stone Size		Ring Configuration		Back Configuration		Stone Art. No.		
Code	Description	Code	Description	Code	Description			
04M	4 mm, PP 18, SS 24	00	None	C	Closed	5000	1028	1028

62 018 Filigree



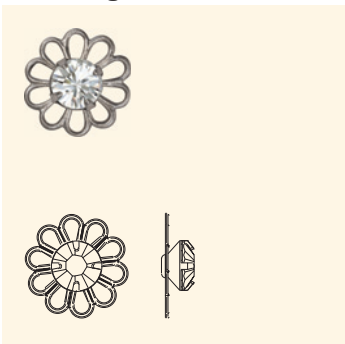
Stone Size		Ring Configuration		Back Configuration		Stone Art. No.	
Code	Description	Code	Description	Code	Description		
P18	PP 18, SS 24	00	None	C	Closed	1028	1028

62 019 Filigree



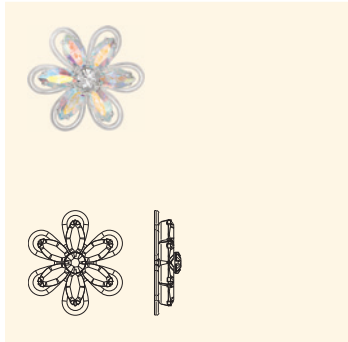
Stone Size		Ring Configuration		Back Configuration		Stone Art. No.		
Code	Description	Code	Description	Code	Description			
P24	PP 24, PP 18, SS 24	00	None	C	Closed	1028	1028	1028

62 020 Filigree



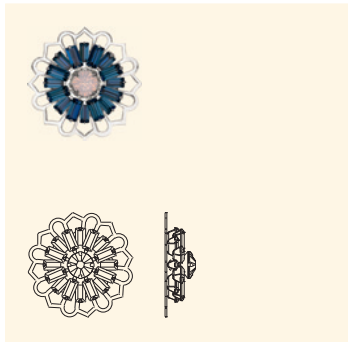
Stone Size		Ring Configuration		Back Configuration		Stone Art. No.	
Code	Description	Code	Description	Code	Description		
S24	SS 24	00	None	C	Closed	1028	

62 021 Filigree



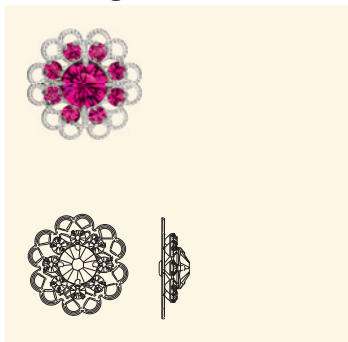
Stone Size		Ring Configuration		Back Configuration		Stone Art. No.	
Code	Description	Code	Description	Code	Description		
10M	10x5 mm, SS 24	00	None	C	Closed	4228	1028

62 022 Filigree



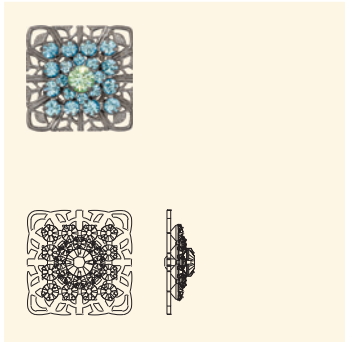
Stone Size		Ring Configuration		Back Configuration		Stone Art. No.	
Code	Description	Code	Description	Code	Description		
05M	5x2.5 mm, 5x2.5 mm, SS 29	00	None	C	Closed	4501	4501 1028

62 023 Filigree



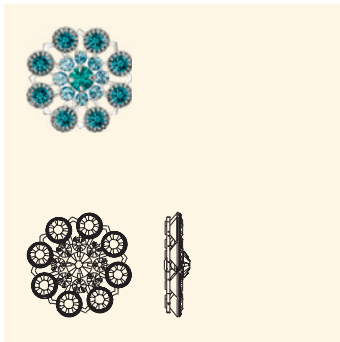
Stone Size		Ring Configuration		Back Configuration		Stone Art. No.	
Code	Description	Code	Description	Code	Description		
P18	PP 18, SS 29	00	None	C	Closed	1028	1028

62 024 Filigree



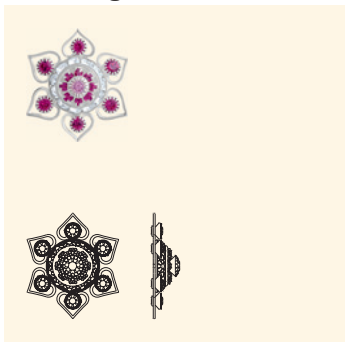
Stone Size		Ring Configuration		Back Configuration		Stone Art. No.		
Code	Description	Code	Description	Code	Description			
P24	PP 24, PP 18, SS 24	00	None	C	Closed	1028	1028	1028

62 025 Filigree



Stone Size		Ring Configuration		Back Configuration		Stone Art. No.		
Code	Description	Code	Description	Code	Description			
P32	PP 32, PP 18, SS 19	00	None	C	Closed	1028	1028	1028

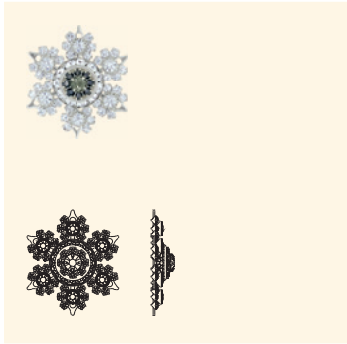
62 026 Filigree



Stone Size		Ring Configuration		Back Configuration		Stone Art. No.			
Code	Description	Code	Description	Code	Description				
P32	PP 32, PP 27, PP 18, SS 24	00	None	C	Closed	1028	1028	1028	1028

Cupchains & Findings Metal Buttons & Filigrees

62 027 Filigree



Stone Size		Ring Configuration		Back Configuration		Stone Art. No.				
Code	Description	Code	Description	Code	Description					
P18	PP 18, PP 32, PP 27, PP 18, SS 24	00	None	C	Closed	1028	1028	1028	1028	1028

Stock Programme



These articles can be delivered ex stock Wattens.

60 323

Size P32 00 C

Colour/Plating
Crystal S (001)

60 408

Size S29 00 C

Colour/Plating
Crystal 3 (001)
Crystal S (001)
Crystal AB S (001 AB)
Aquamarine S (202)
Light Rose S (223)

60 478

Size S29 00 C

Colour/Plating
Crystal S (001)
Jet S (280)
Amethyst S (204)
Light Rose S (223)
Siam S (208)

60 879

Size P18 00 C

Colour/Plating
Crystal S (001)

61 019

Size P32 00 C

Colour/Plating
Crystal S (001)

62 000

Size S24 00 C

Colour/Plating
Crystal S (001)
Crystal 3 (001)



rondelles

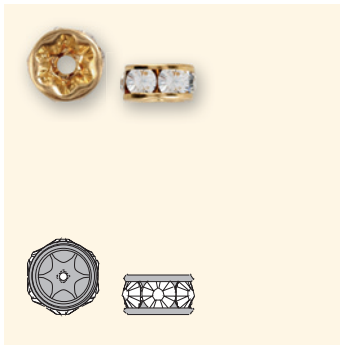
Rondelles are Round Stones and Fancy Stones with metal parts that can be used as a “spacer” between Beads or Crystal Pearls. The XILION Square Rondelles are also part of this group.



Article Explanation - Base Item Number

<<<

77504 – 77510



7	7	5	04
Product category	Stone code (type of stone used)	Setting code	Outer diameter (always 2-digit code)
7 Rondelles	7 Rondelle	3 Half Moon 5 Spacer 6 Square 7 Bar 8 XILION Square	04 05 06 07 08 09 10 12 13 19

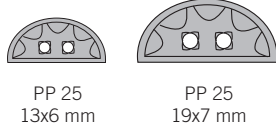
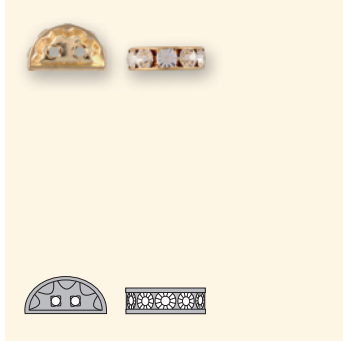
Ordering Example & Product Variety Explanation

<<<

1	77 504	P13	00	0
Material type	Base item number	Stone size	Ring configuration	Back configuration
All Rondelles come in brass unless Sterling is requested. Please consult your customer service representative for special orders.		3-digit code from respective product matrix	00 No Rings	0 None
1 Brass 2 Sterling				
F1	S	1028	F	215
Stone pattern	Plating	Base stone art. no.	Foiling	Colour of crystal
F1 Crystal/colour/effect	Can be added at an additional charge. Z No Plating G Gun Metal Plating* S Sterling Silver 15 Mil* 3 Gold 3-5 Mil*	1028 4428	F Foiled	Please see the respective colour chart at the beginning of this chapter for all available code references.
	* Anti nickel allergenic			

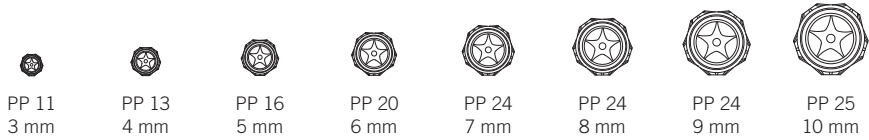
Not all configurations are available for all articles. Please refer to the respective product matrix for available combinations.

77 313, 77 319 Rondelle Half Moon



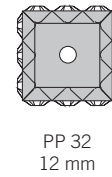
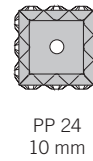
Base Item No.	Stone Size		Ring Configuration		Back Configuration		Stone Art.No.
	Code	Description	Code	Description	Code	Description	
77 313	P25	PP 25	00	None	0	None	1028
77 319	P25	PP 25	00	None	0	None	1028

77 503 – 77 510 Rondelle Spacer



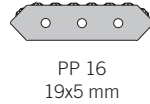
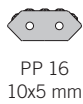
Base Item No.	Stone Size		Ring Configuration		Back Configuration		Stone Art.No.
	Code	Description	Code	Description	Code	Description	
77 503	P11	PP 11	00	None	0	None	1028
77 504	P13	PP 13	00	None	0	None	1028
77 505	P16	PP 16	00	None	0	None	1028
77 506	P20	PP 20	00	None	0	None	1028
77 506	P24	PP 24	00	None	0	None	1028
77 507	P24	PP 24	00	None	0	None	1028
77 508	P24	PP 24	00	None	0	None	1028
77 509	P24	PP 24	00	None	0	None	1028
77 510	P25	PP 25	00	None	0	None	1028

77 604 – 77 612 Rondelle Square



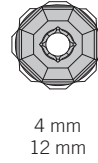
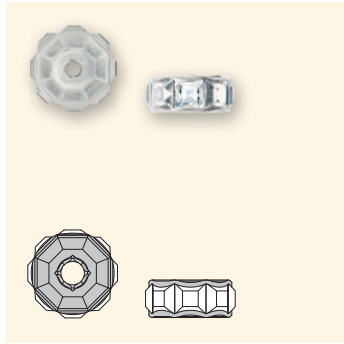
Base Item No.	Stone Size		Ring Configuration		Back Configuration		Stone Art.No.
	Code	Description	Code	Description	Code	Description	
77 604	P13	PP 13	00	None	0	None	1028
77 606	P18	PP 18	00	None	0	None	1028
77 608	P24	PP 24	00	None	0	None	1028
77 610	P24	PP 24	00	None	0	None	1028
77 612	P32	PP 32	00	None	0	None	1028

77 710 – 77 719 Rondelle Bar



Base Item No.	Stone Size		Ring Configuration		Back Configuration		Stone Art.No.
	Code	Description	Code	Description	Code	Description	
77 710	P16	PP 16	00	None	0	None	1028
77 719	P16	PP 16	00	None	0	None	1028

77 806 – 77 812 XILION Square Rondelle



Base Item No.	Stone Size		Ring Configuration		Back Configuration		Stone Art.No.	Outside Diameter
	Code	Description	Code	Description	Code	Description		
77 806	02M	2 mm	00	None	0	None	4428	6 mm
77 808	03M	3 mm	00	None	0	None		8 mm
77 810	04M	4 mm	00	None	0	None		10 mm
77 812	04M	4 mm	00	None	0	None		12 mm

Stock Programme



These articles can be delivered ex stock Wattens.

77 313

Size P25

Colour/Plating

- Crystal S (001)
- Crystal AB S (001 AB)

77 319

Size P25

Colour/Plating

- Crystal S (001)
- Crystal 3 (001)
- Crystal AB S (001 AB)

77 503

Size P11

Colour/Plating

- Crystal Z (001)
- Crystal 3 (001)
- Crystal S (001)

77 504

Size P13

Colour/Plating

- Crystal Z (001)
- Crystal 3 (001)
- Crystal S (001)
- Crystal AB 3 (001 AB)
- Crystal AB S (001 AB)
- Jet S (280)

77 505

Size P16

Colour/Plating

- Crystal Z (001)
- Crystal 3 (001)
- Crystal S (001)
- Crystal AB 3 (001 AB)
- Crystal AB S (001 AB)

77 506

Size P20 P24

Colour/Plating

- Crystal Z (001)
- Crystal 3 (001)
- Crystal S (001)
- Crystal AB 3 (001 AB)
- Crystal AB S (001 AB)
- Jet S (280)
- Aquamarine S (202)
- Light Amethyst S (212)
- Light Rose S (223)
- Peridot S (214)
- Rose S (209)

Cupchains & Findings

Rondelles

77 507

Size P24

Colour/Plating

- Crystal Z (001)
- Crystal 3 (001)
- Crystal S (001)
- Crystal AB S (001 AB)

77 508

Size P24

Colour/Plating

- Crystal Z (001)
- Crystal 3 (001)
- Crystal S (001)
- Crystal G (001)
- Crystal AB S (001 AB)
- Crystal AB 3 (001 AB)

77 509

Size P24

Colour/Plating

- Crystal S (001)

77 510

Size P25

Colour/Plating

- Crystal Z (001)
- Crystal S (001)
- Crystal 3 (001)

77 604

Size P13

Colour/Plating

- Crystal Z (001)
- Crystal 3 (001)
- Crystal S (001)

77 606

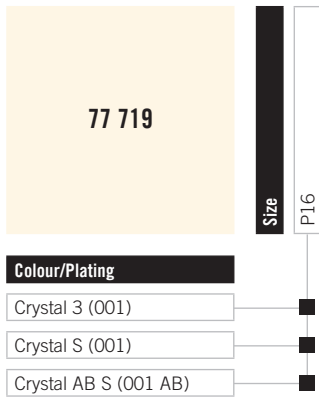
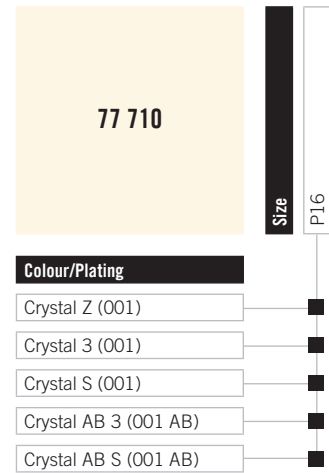
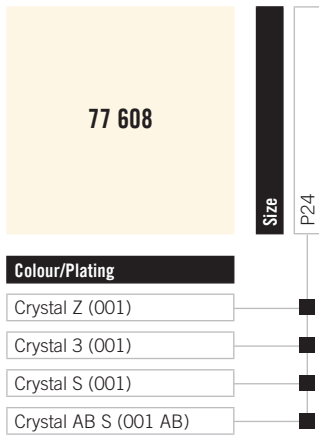
Size P18

Colour/Plating

- Crystal Z (001)
- Crystal 3 (001)
- Crystal S (001)
- Crystal AB S (001 AB)

Cupchains & Findings

Rondelles

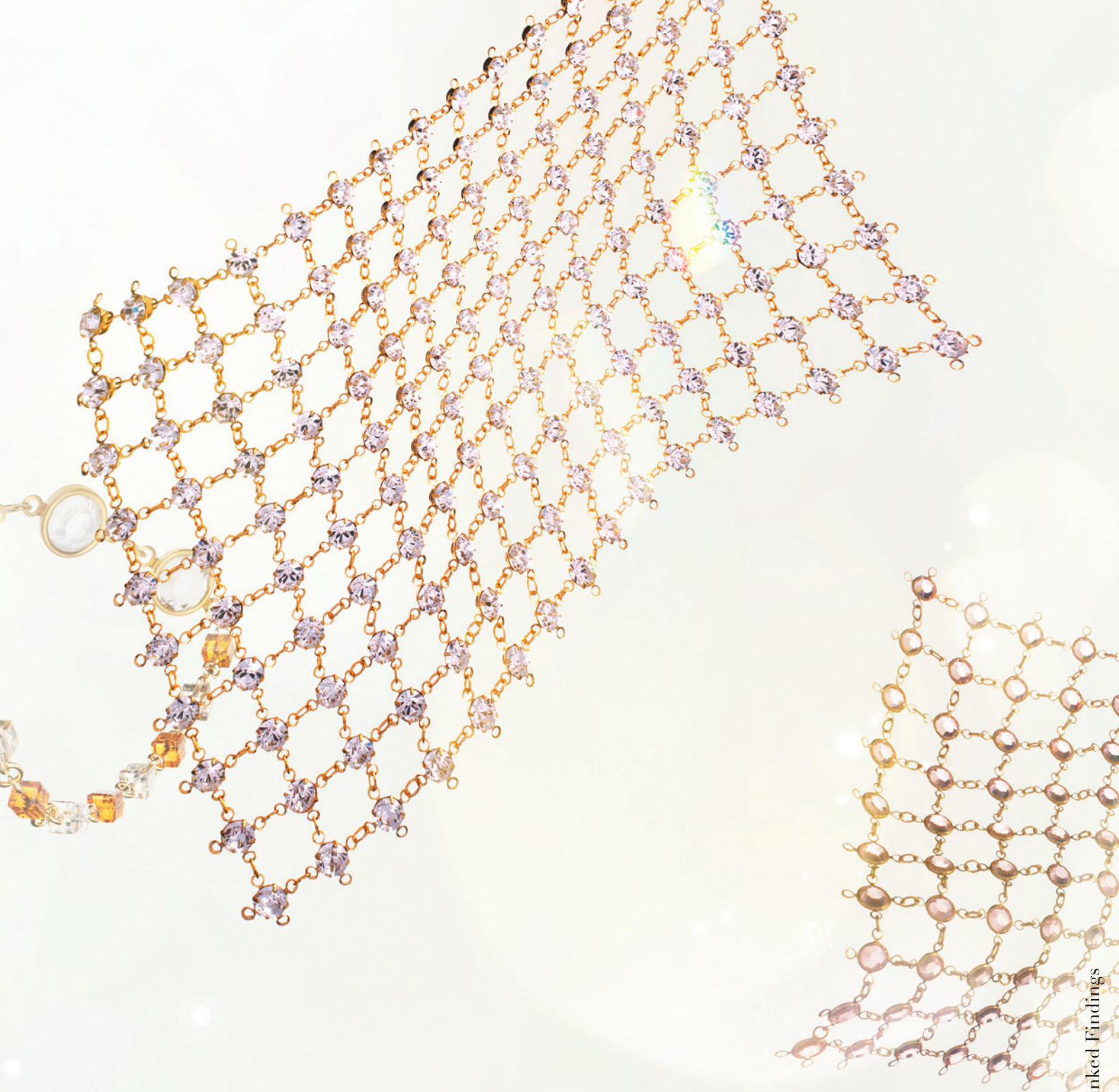


Product Details

<<<

Article Stone Article Number	Stone Size	Number of Stones	Outside Diameter
77 313 1028	PP 25	5	13x6 mm
77 319 1028	PP 25	7	19x7 mm
77 503 1028	PP 11	5	3 mm
77 504 1028	PP 13	6	4 mm
77 505 1028	PP 16	6	5 mm
77 506 1028 1028	PP 20 PP 24	6 5	6 mm 6 mm
77 507 1028	PP 24	6	7 mm
77 508 1028	PP 24	7	8 mm
77 509 1028	PP 24	8	9 mm
77 510 1028	PP 25	9	10 mm
77 604 1028	PP 13	8	4 mm
77 606 1028	PP 18	8	6 mm
77 608 1028	PP 24	8	8 mm
77 610 1028	PP 24	12	10 mm
77 612 1028	PP 32	12	12 mm
77 710 1028	PP 16	5	10x5 mm
77 719 1028	PP 16	8	19x5 mm
77 806 4428	2 mm	8	6 mm
77 808 4428	3 mm	7	8 mm
77 810 4428	4 mm	6	10 mm
77 812 4428	4 mm	8	12 mm





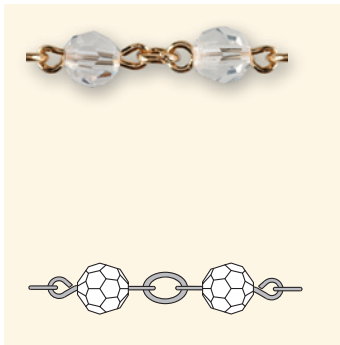
LINKED *findings*

Linked Findings incorporate Channels and Bead Chains, and the Crystal, Channel and Pearl Web. Exclusive Channel and Bead Chains (denoted with the letter “A” in the article number) represent an even higher processing quality than the standard Channel and Bead Chains. The Crystal, Channel and Pearl Webs are combinations of loose crystals with metal elements. They can be ordered in sheets or by the metre.

Ordering Example & Product Variety Explanation

<<<

90 023

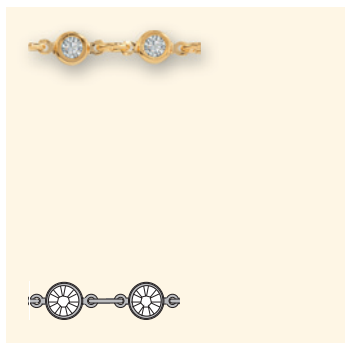


1	90 023	07M	00	0
Material type	Base item number	Stone size	Ring configuration	Back configuration
All Linked Findings come in brass unless Sterling is requested. Please consult your customer service representative for special orders.	Number above product picture always starting with 90	3-digit code from respective product matrix	00 No Rings	0 Open
1 Brass 2 Sterling				

F1	G	5000	203
Stone pattern	Plating	Base stone art. no.	Colour of crystal
F1 Crystal/colour/effect F2 2 alternate colours F3 3 alternate colours F4 4 alternate colours	Can be added at an additional charge. Z No Plating G Gun Metal Plating* S Sterling Silver 15 Mil* 3 Gold 3-5 Mil* * Anti nickel allergenic	1028 1122 1128 4128 4228 4428 5000 5328 5601	Please see the respective colour chart at the beginning of this chapter for all available code references.

Not all configurations are available for all articles. Please refer to the respective product matrix for available combinations.

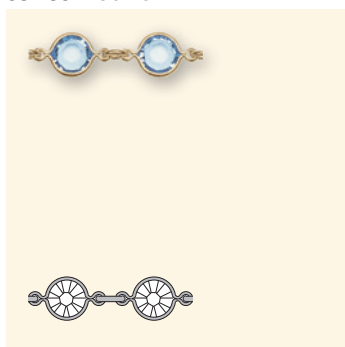
90 001 Round



PP 24

Stone Size		Ring Configuration		Back Configuration		Stone Art. No.	
Code	Description	Code	Description	Code	Description		
P24	PP 24	00	None	0	Open	1028	

90 A05 Round



PP 32



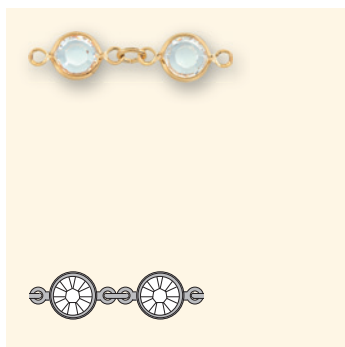
SS 24



SS 29

Stone Size		Ring Configuration		Back Configuration		Stone Art. No.	
Code	Description	Code	Description	Code	Description		
P32	PP 32	00	None	0	Open	1028	1128
S24	SS 24	00	None	0	Open		
S29	SS 29	00	None	0	Open		

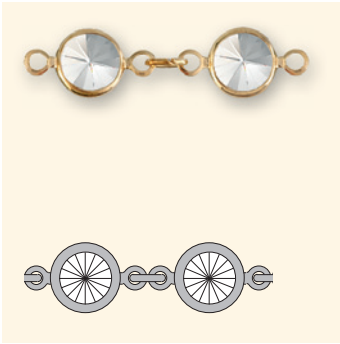
90 005 Round



SS 29

Stone Size		Ring Configuration		Back Configuration		Stone Art. No.	
Code	Description	Code	Description	Code	Description		
S29	SS 29	00	None	0	Open	1122	1128

90 009 Round



Stone Size		Ring Configuration		Back Configuration		Stone Art. No.
Code	Description	Code	Description	Code	Description	
S47	SS 47	00	None	0	Open	1122

90 010 Oval



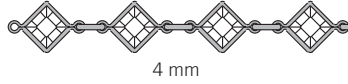
Stone Size		Ring Configuration		Back Configuration		Stone Art. No.
Code	Description	Code	Description	Code	Description	
06M	6x4 mm	00	None	0	Open	4128

90 014 Navette



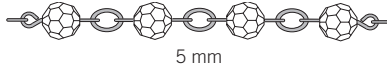
Stone Size		Ring Configuration		Back Configuration		Stone Art. No.
Code	Description	Code	Description	Code	Description	
10M	10x5 mm	00	None	0	Open	4228

90 A15 Square



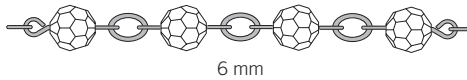
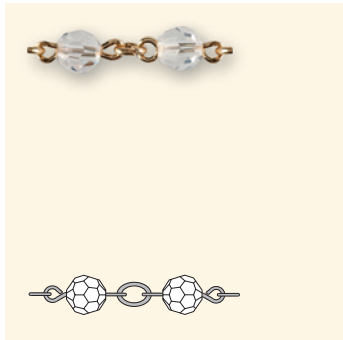
Stone Size		Ring Configuration		Back Configuration		Stone Art. No.
Code	Description	Code	Description	Code	Description	
04M	4 mm	00	None	0	Open	4428

90 021 Bead



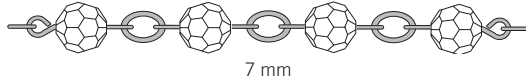
Stone Size		Ring Configuration		Back Configuration		Stone Art. No.
Code	Description	Code	Description	Code	Description	
05M	5 mm	00	None	0	Open	5000

90 022 Bead



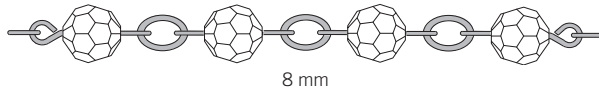
Stone Size		Ring Configuration		Back Configuration		Stone Art. No.
Code	Description	Code	Description	Code	Description	
06M	6 mm	00	None	0	Open	5000

90 023 Bead



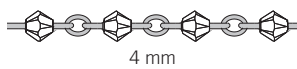
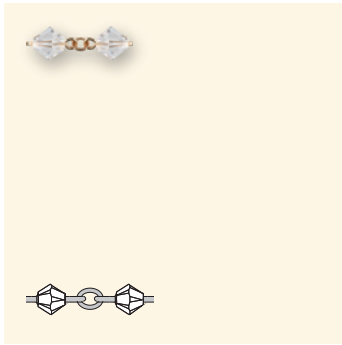
Stone Size		Ring Configuration		Back Configuration		Stone Art. No.
Code	Description	Code	Description	Code	Description	
07M	7 mm	00	None	0	Open	5000

90 024 Bead



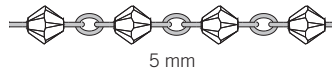
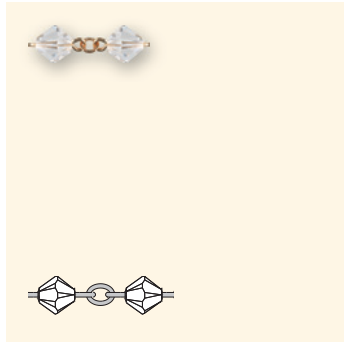
Stone Size		Ring Configuration		Back Configuration		Stone Art. No.
Code	Description	Code	Description	Code	Description	
08M	8 mm	00	None	0	Open	5000

90 025 Bead



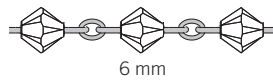
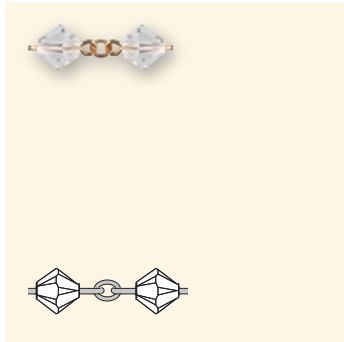
Stone Size		Ring Configuration		Back Configuration		Stone Art. No.
Code	Description	Code	Description	Code	Description	
04M	4 mm	00	None	0	Open	5328

90 026 Bead



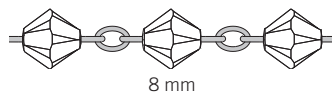
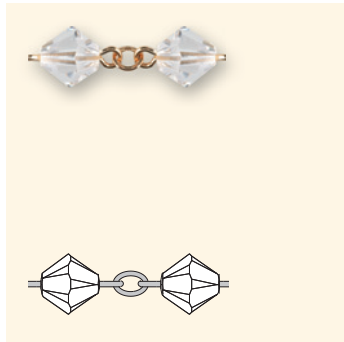
Stone Size		Ring Configuration		Back Configuration		Stone Art. No.
Code	Description	Code	Description	Code	Description	
05M	5 mm	00	None	0	Open	5328

90 027 Bead



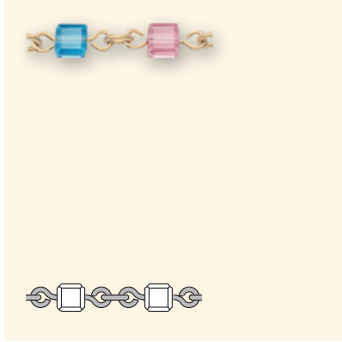
Stone Size		Ring Configuration		Back Configuration		Stone Art. No.
Code	Description	Code	Description	Code	Description	
06M	6 mm	00	None	0	Open	5328

90 028 Bead



Stone Size		Ring Configuration		Back Configuration		Stone Art. No.
Code	Description	Code	Description	Code	Description	
08M	8 mm	00	None	0	Open	5328

90 A30 Exclusive Bead Chain



Stone Size		Ring Configuration		Back Configuration		Stone Art. No.	
Code	Description	Code	Description	Code	Description		
04M	4 mm	00	None	0	Open	5601	

90 A31 Exclusive Bead Chain

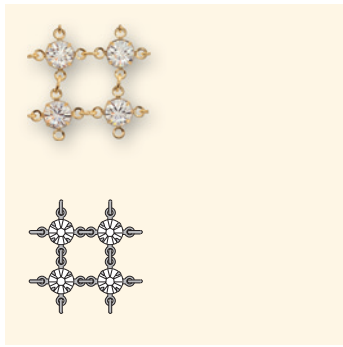


Stone Size		Ring Configuration		Back Configuration		Stone Art. No.	
Code	Description	Code	Description	Code	Description		
04M	4 mm	00	None	0	Open	5328	5601

Ordering Example & Product Variety Explanation

<<<

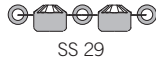
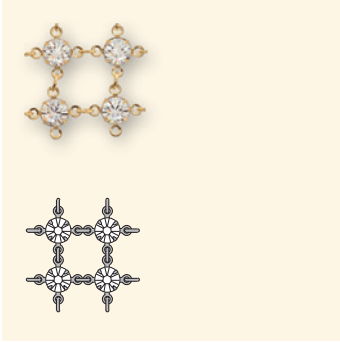
98 001



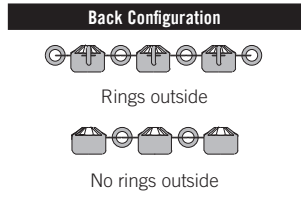
1	98 001	S29	01	N	>>
Material type	Base item number	Stone size	Ring configuration	Back configuration	
All Web Sheets come in brass unless Sterling is requested. Please consult your customer service representative for special orders.	Number above product picture always starting with 98	3-digit code from respective product matrix	01 Sheet	N No rings outside R Rings outside	
1 Brass 2 Sterling					
>>	F1	H	1028	F	501
Stone pattern	Plating	Base stone art. no.	Foiling	Colour of crystal	
F1 Crystal/colour/effect	Can be added at an additional charge. Z No Plating G Gun Metal Plating* S Sterling Silver 15 Mil* 3 Gold 3-5 Mil*	1028 1128	F Foiled Unfoiled	Please see the respective colour chart at the beginning of this chapter for all available code references.	
	* Anti nickel allergenic				

Not all configurations are available for all articles. Please refer to the respective product matrix for available combinations.

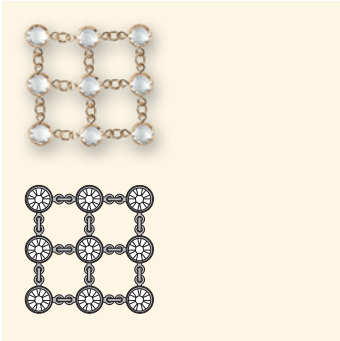
98 001 Crystal Web Sheet



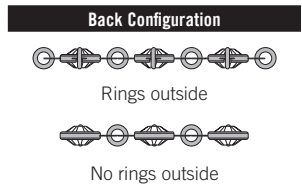
Stone Size		Ring Configuration		Back Configuration		Sheet Size	Stone Art. No.
Code	Description	Code	Description	Code	Description	Description	
S29	SS 29	01	Sheet	R	Rings outside	~500x200 mm	1028
S29	SS 29	01	Sheet	N	No rings outside	~500x200 mm	



98 002 Channel Web Sheet



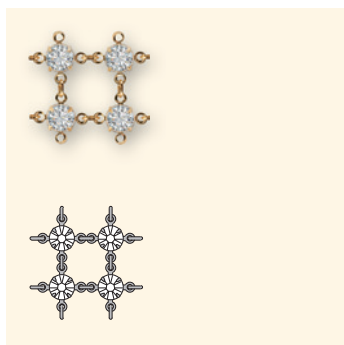
Stone Size		Ring Configuration		Back Configuration		Sheet Size	Stone Art. No.
Code	Description	Code	Description	Code	Description	Description	
S29	SS 29	01	Sheet	R	Rings outside	~500x200 mm	1128
S29	SS 29	01	Sheet	N	No rings outside	~500x200 mm	



Ordering Example & Product Variety Explanation

<<<

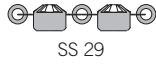
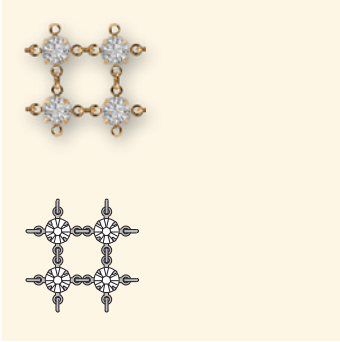
99 001



1	99 001	S29	03	R
Material type	Base item number	Stone size	Ring configuration	Back configuration
All Web Rows come in brass unless Sterling is requested. Please consult your customer service representative for special orders.	Number above product picture always starting with 99	3-digit code from respective product matrix	02-15 Number of rows	N No rings outside R Rings outside
1 Brass 2 Sterling				
F1	3	1028	F	001
Stone pattern	Plating	Base stone art. no.	Foiling	Colour of crystal
F1 Crystal/colour/effect	Can be added at an additional charge. Z No Plating G Gun Metal Plating* S Sterling Silver 15 Mil* 3 Gold 3-5 Mil*	1028 1128	F Foiled Unfoiled	Please see the respective colour chart at the beginning of this chapter for all available code references.
	* Anti nickel allergenic			

Not all configurations are available for all articles. Please refer to the respective product matrix for available combinations.

99 001 Crystal Web Row



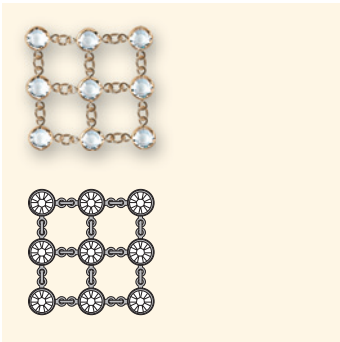
Stone Size		Ring Configuration		Back Configuration		Length	Stone Art. No.
Code	Description	Code	Description	Code	Description	Description	
S29	SS 29	02-15	Number of rows	R	Rings outside	1 row = 1 metre	1028
S29	SS 29	02-15	Number of rows	N	No rings outside	1 row = 1 metre	

Back Configuration

Rings outside

No rings outside

99 002 Channel Web Row



Stone Size		Ring Configuration		Back Configuration		Length	Stone Art. No.
Code	Description	Code	Description	Code	Description	Description	
S29	SS 29	02-15	Number of rows	R	Rings outside	1 row = 1 metre	1128
S29	SS 29	02-15	Number of rows	N	No rings outside	1 row = 1 metre	

Back Configuration

Rings outside

No rings outside

Cupchains & Findings Linked Findings

Stock Programme



These articles can be delivered ex stock Wattens.

90 005

Size S29 00 0

Colour/Plating

- Crystal S (001)
- Crystal 3 (001)
- Light Multi S (907)
- Light Multi 3 (907)

98 001

Size S29 01 R

Colour/Plating

- Crystal Z (001)



Product Details

<<<

Article Stone Article Number	Stone Size	Stones per Metre	Stones per Foot
90 001			
1028	PP 24	97	30
90 A05			
1028	PP 32	92	28
1028	SS 24	84	26
1128	SS 29	76	23
90 005			
1122	SS 29	65	20
1128	SS 29	65	20
90 010			
4128	6 mm	78	24
90 014			
4228	10 mm	54	16
90 A15			
4428	4 mm	83	26
90 021			
5000	5 mm	91	28
90 022			
5000	6 mm	71	25
90 023			
5000	7 mm	66	20
90 024			
5000	8 mm	62	19
90 025			
5328	4 mm	98	30
90 026			
5328	5 mm	91	28
90 027			
5328	6 mm	71	25
90 028			
5328	8 mm	62	19
90 A30			
5601	4 mm	86	27
90 A31			
5328	4 mm	85	26
5601	4 mm	85	26
99 001			
1028	SS 29	70	21
99 002			
1128	SS 29	66	20





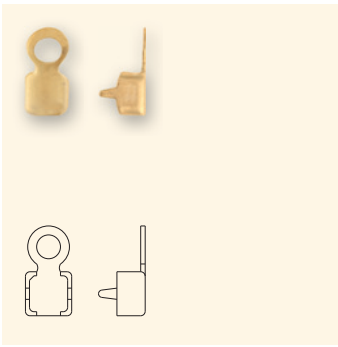
brass COMPONENTS

Brass Components are end fasteners that match Cupchains from our assortment on offer. Also offered are Lobster Claws for Channel- and Bead Chains, which are attractive components that are easy to apply.

Ordering Example & Product Variety Explanation

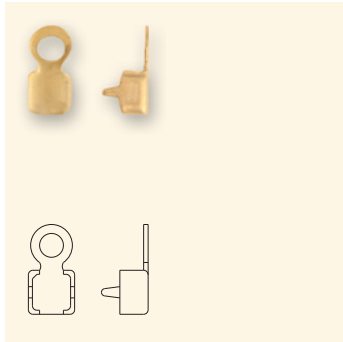
<<<

00 011



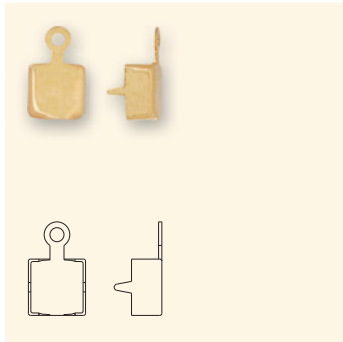
1	00 011	000	00	0	G
Material type	Base item number	No stone	No ring configuration	No back configuration	Plating
All Brass Components come in brass unless Sterling is requested. Please consult your customer service representative for special orders.	Number above product picture always starting with 0				Can be added at an additional charge. No Plating G Gun Metal Plating* S Sterling Silver 15 Mil* 3 Gold 3-5 Mil* <small>* Anti nickel allergenic</small>
1 Brass 2 Sterling					

00 011 Crimp Foldover



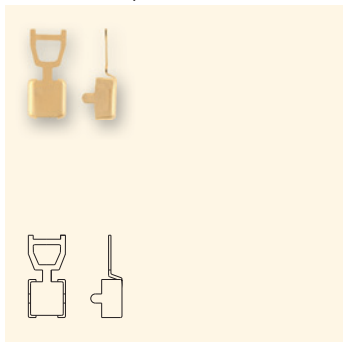
Base Item No.		Ring Configuration		Back Configuration		For Stone Size
Code	Description	Code	Description	Code	Description	
000	None	00	None	0	None	PP 11

00 029 Crimp Foldover



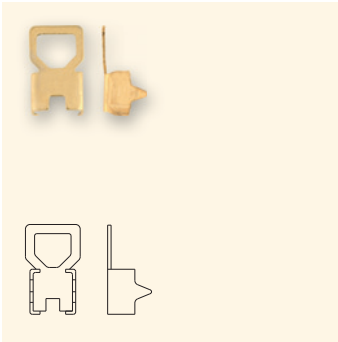
Base Item No.		Ring Configuration		Back Configuration		For Stone Size
Code	Description	Code	Description	Code	Description	
000	None	00	None	0	None	SS 29

00 248 Crimp Foldover



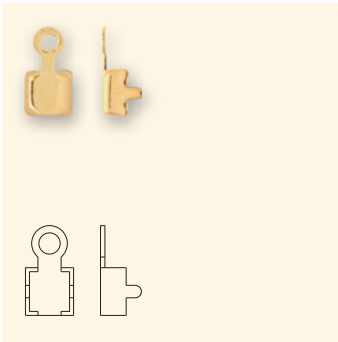
Base Item No.		Ring Configuration		Back Configuration		For Stone Size
Code	Description	Code	Description	Code	Description	
000	None	00	None	0	None	SS 24

00 256 Crimp Foldover



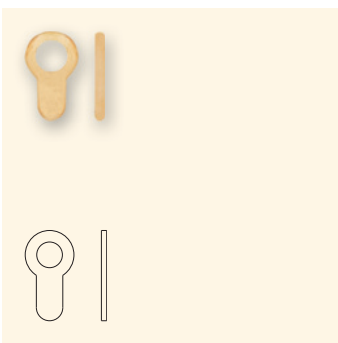
Base Item No.		Ring Configuration		Back Configuration		For Stone Size
Code	Description	Code	Description	Code	Description	
000	None	00	None	0	None	4 mm

00 286 Crimp Spring Ring



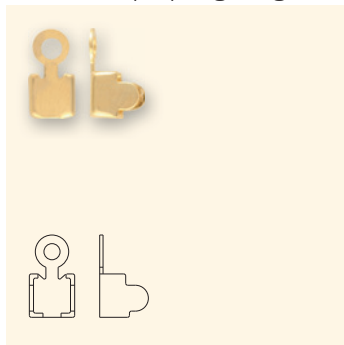
Base Item No.		Ring Configuration		Back Configuration		For Stone Size
Code	Description	Code	Description	Code	Description	
000	None	00	None	0	None	PP 14

00 578 Solder End



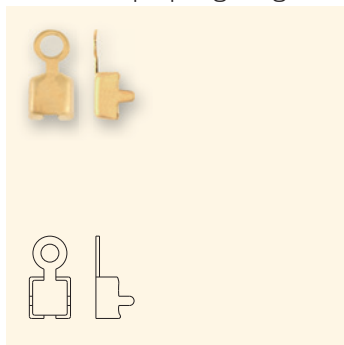
Base Item No.		Ring Configuration		Back Configuration	
Code	Description	Code	Description	Code	Description
000	None	00	None	0	None

00 582 Crimp Spring Ring



Base Item No.		Ring Configuration		Back Configuration		For Stone Size
Code	Description	Code	Description	Code	Description	
000	None	00	None	0	None	PP 24

00 594 Crimp Spring Ring



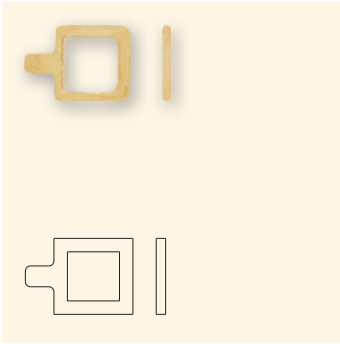
Base Item No.		Ring Configuration		Back Configuration		For Stone Size
Code	Description	Code	Description	Code	Description	
000	None	00	None	0	None	PP 18

01 013 Foldover Raw



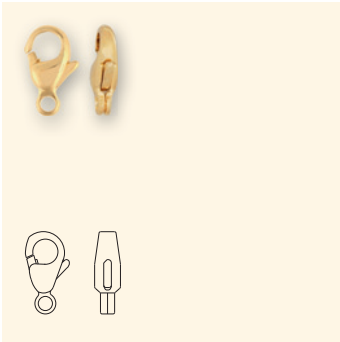
Base Item No.		Ring Configuration		Back Configuration	
Code	Description	Code	Description	Code	Description
000	None	00	None	0	None

01 014 Solder End



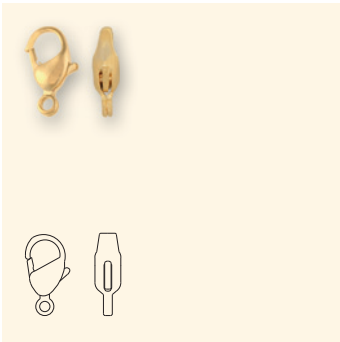
Base Item No.		Ring Configuration		Back Configuration	
Code	Description	Code	Description	Code	Description
000	None	00	None	0	None

01 255 Lobster Claw Small



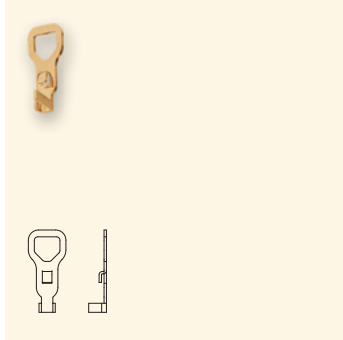
Base Item No.		Ring Configuration		Back Configuration	
Code	Description	Code	Description	Code	Description
000	None	00	None	0	None

01 256 Lobster Claw Large



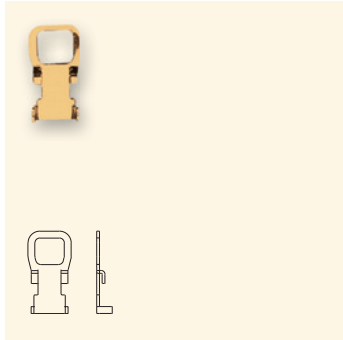
Base Item No.		Ring Configuration		Back Configuration	
Code	Description	Code	Description	Code	Description
000	None	00	None	0	None

02 08B Bezel Crimp Foldover



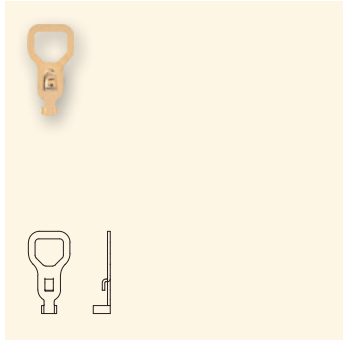
Base Item No.		Ring Configuration		Back Configuration		For Stone Size
Code	Description	Code	Description	Code	Description	
000	None	00	None	0	None	PP 32

02 09S Snake Chain Foldover



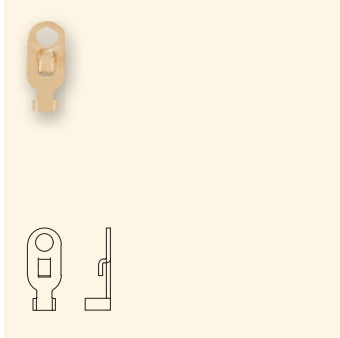
Base Item No.		Ring Configuration		Back Configuration		For Stone Size
Code	Description	Code	Description	Code	Description	
000	None	00	None	0	None	7x3 mm

05 81B Bezel Crimp Foldover



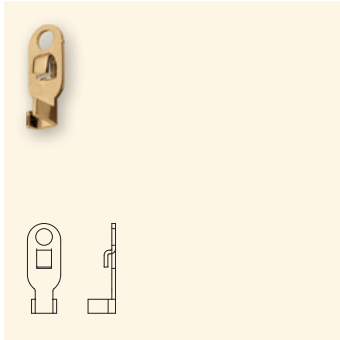
Base Item No.		Ring Configuration		Back Configuration		For Stone Size
Code	Description	Code	Description	Code	Description	
000	None	00	None	0	None	PP 24

05 82B Bezel Crimp Spring Ring



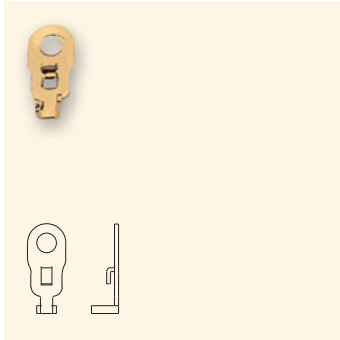
Base Item No.		Ring Configuration		Back Configuration		For Stone Size
Code	Description	Code	Description	Code	Description	
000	None	00	None	0	None	PP 24

05 83B Bezel Crimp Spring Ring



Base Item No.		Ring Configuration		Back Configuration		For Stone Size
Code	Description	Code	Description	Code	Description	
000	None	00	None	0	None	PP 32

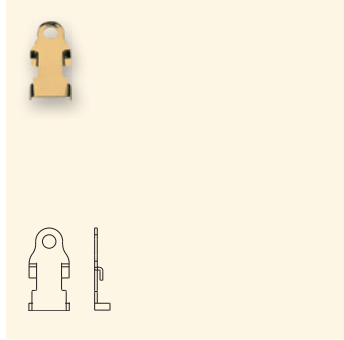
05 94B Bezel Crimp Spring Ring



Base Item No.		Ring Configuration		Back Configuration		For Stone Size
Code	Description	Code	Description	Code	Description	
000	None	00	None	0	None	PP 18

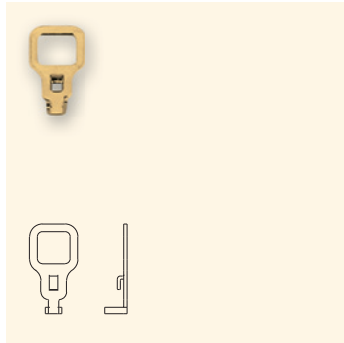
Cupchains & Findings Brass Components

05 95S Snake Chain Spring Ring



Base Item No.		Ring Configuration		Back Configuration		For Stone Size
Code	Description	Code	Description	Code	Description	
000	None	00	None	0	None	7x3 mm

07 41B Bezel Crimp Foldover



Base Item No.		Ring Configuration		Back Configuration		For Stone Size
Code	Description	Code	Description	Code	Description	
000	None	00	None	0	None	PP 18

Stock Programme



These articles can be delivered ex stock Wattens.

00 582

For Stone Size
PP24

Colour/Plating
Gold 3-5 Mil (3)

01 256

Colour/Plating
Gold 3-5 Mil (3)

