



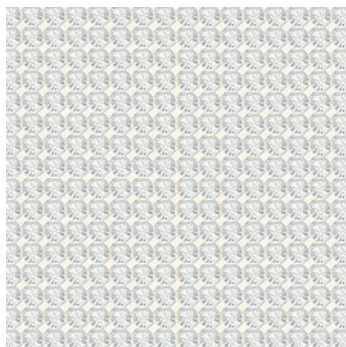
18 CRYSTAL *mesh*

Crystal Mesh is a fluid metal mesh carrier with integrated loose crystals. The product is available in a wide range of colours and casings, as Hotfix version, which can be applied by heat, or as No Hotfix version that can be hand- or machine sewn. Customised solutions are possible and customers are able to choose special motives incorporating up to nine colours. Crystal Mesh is suitable for a wide range of segments such as for example the textile and accessories segment.

Article Explanation - Sheets

<<<

40 000



SH	100
S	~500x200
SS	PP 21
M	1 SH
	100%

40 000	SH	S	SS	M	100%
Article number	Sheet	Sheet size in mm	Stone size	Minimum order quantity in sheets (SH)	Documentation size in %

Ordering Example & Product Variety Explanation

<<<

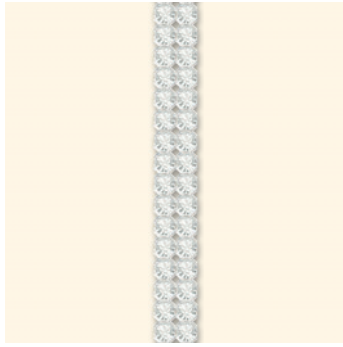
40 000	100	082	001	NOHF
Article number	Sheet	Colour of casing	Colour of crystals	Hotfix Technology
	100 Standard sheet (~500x200 mm)	012 Black* 081 Gold** 082 Silver**	Please see the respective product matrix for all available code references.	HF With Hotfix glue NOHF Without Hotfix glue

* Alu: 012 Black
** Brass: 081 Gold, 082 Silver

Article Explanation - Rows

<<<

40 001



R	002-033
SS	PP 21
M	10 M
	100%

40 001	R	SS	M	100%
Article number	Number of rows	Stone size	Minimum order quantity in meters (M)	Documentation size in %
	This article is available from 2 to 33 rows.			

Ordering Example & Product Variety Explanation

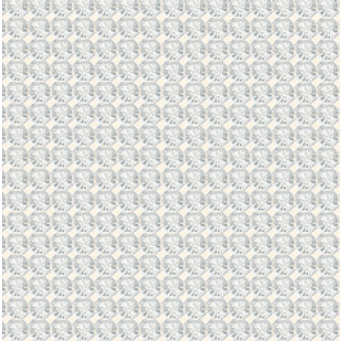
<<<

40 001	002	082	001	HF
Article number	3-digit code for number of rows	Colour of casing	Colour of crystals	Hotfix Technology
		012 Black* 081 Gold** 082 Silver**	Please see the respective product matrix for all available code references.	HF With Hotfix glue NOHF Without Hotfix glue

* Alu: 012 Black
** Brass: 081 Gold, 082 Silver

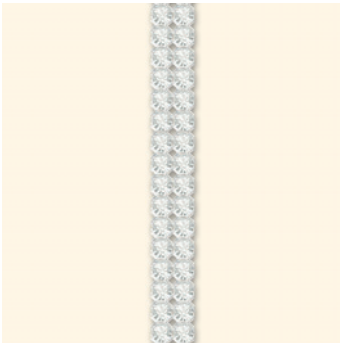
Crystal Mesh

40 000



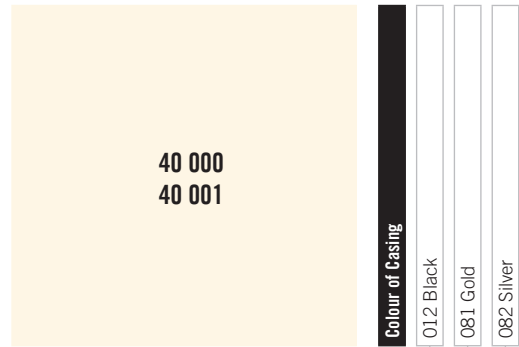
SH	100
S	~500x200
SS	PP 21
M	1 SH 100%

40 001


















R	002-033
SS	PP 21
M	10 M 100%

Crystal Mesh Standard



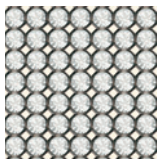
Colour	012 Black	081 Gold	082 Silver
Crystal F (001)	■	■	■
Crystal AB F (001 AB)	■	■	■
Crystal Copper F (001 COP)	■	■	■
Crystal Dorado (001 DOR)	■	■	■
Crystal Golden Shadow F (001 GSHA)	■	■	■
Crystal Metallic Blue F (001 METBL)	■	■	■
Crystal Metallic Light Gold F (001 MLGLD)	■	■	■
Crystal Moonlight F (001 MOL)	■	■	■
Crystal Red Magma F (001 REDM)	■	■	■
Crystal Silver Shade F (001 SSHA)	■	■	■
Jet (280)	■	■	■
Jet Hematite (280 HEM)	■	■	■
Jet Nut (280 NUT)	■	■	■
Air Blue Opal F (285)	■	■	■
Amethyst F (204)	■	■	■
Aquamarine F (202)	■	■	■
Black Diamond F (215)	■	■	■
Blue Zircon F (229)	■	■	■
Caribbean Blue Opal F (394)	■	■	■
Cyclamen Opal F (398)	■	■	■
Dark Indigo F (288)	■	■	■
Dark Red Coral F (396)	■	■	■
Emerald F (205)	■	■	■
Fern Green F (291)	■	■	■
Fuchsia F (502)	■	■	■
Greige F (284)	■	■	■
Indian Pink F (289)	■	■	■
Jonquil F (213)	■	■	■
Khaki F (550)	■	■	■
Light Amethyst F (212)	■	■	■
Light Colorado Topaz F (246)	■	■	■
Light Grey Opal F (383)	■	■	■
Light Rose F (223)	■	■	■
Light Sapphire F (211)	■	■	■
Light Siam F (227)	■	■	■
Mocca F (286)	■	■	■
Pacific Opal F (390)	■	■	■
Padparadscha F (542)	■	■	■
Palace Green Opal F (393)	■	■	■

<p>40 000 40 001</p>	Colour of Casing			
		012 Black	081 Gold	082 Silver
	Colour			
	 Peridot F (214)	■	■	■
	 Provence Lavender F (283)	■	■	■
	 Purple Velvet F (277)	■	■	■
	 Rose F (209)	■	■	■
	 Rose Water Opal F (395)	■	■	■
	 Sand Opal F (287)	■	■	■
	 Sapphire F (206)	■	■	■
	 Siam F (208)	■	■	■
	 Silk F (391)	■	■	■
	 Smoked Topaz F (220)	■	■	■
	 Tanzanite F (539)	■	■	■
	 Topaz F (203)	■	■	■
 Vintage Rose F (319)	■	■	■	
 Light Multi F (908)*	■	■	■	
 Rainbow Multi F (909)**	■	■	■	

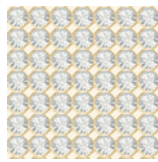
Available Casing Colours



Crystal Mesh Standard is available with black, gold and silver casing. Please see the product matrix for all available options.



012 Black



081 Gold

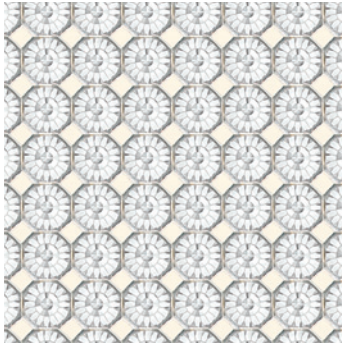


082 Silver

* Light Multi F consists of Crystal, Peridot, Light Amethyst, Jonquil, Aquamarine.

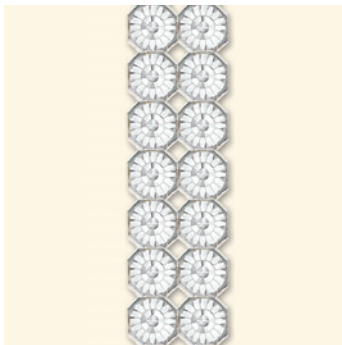
** Rainbow Multi F consists of Topaz, Light Siam, Fuchsia, Peridot, Sapphire.

40 100

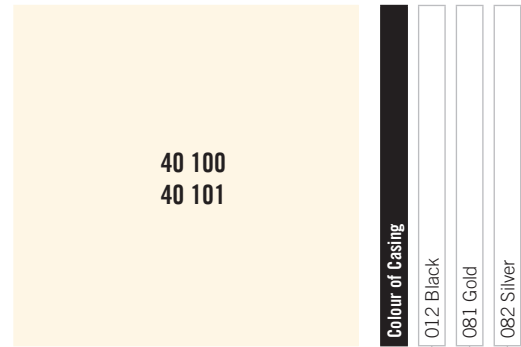


SH	100	
S	~500x200	
SS	SS 24	
M	1 SH	100%

40 101



R	002-018	
SS	SS 24	
M	10 M	100%



Colour	012 Black	081 Gold	082 Silver
Crystal F (001)	■	■	■
Crystal AB F (001 AB)	■	■	■
Crystal Copper F (001 COP)	■	■	■
Crystal Golden Shadow F (001 GSHA)	■	■	■
Crystal Silver Shade F (001 SSHA)	■	■	■
Jet (280)	■	■	■
Jet Hematite (280 HEM)	■	■	■
Amethyst F (204)	■	■	■
Aquamarine F (202)	■	■	■
Black Diamond F (215)	■	■	■
Emerald F (205)	■	■	■
Fuchsia F (502)	■	■	■
Light Amethyst F (212)	■	■	■
Light Colorado Topaz F (246)	■	■	■
Light Peach F (362)	■	■	■
Light Rose F (223)	■	■	■
Light Sapphire F (211)	■	■	■
Light Siam F (227)	■	■	■
Padparadscha F (542)	■	■	■
Peridot F (214)	■	■	■
Rose F (209)	■	■	■
Sapphire F (206)	■	■	■
Siam F (208)	■	■	■
Silk F (391)	■	■	■
Smoked Topaz F (220)	■	■	■
Tanzanite F (539)	■	■	■
Topaz F (203)	■	■	■

Available Casing Colours



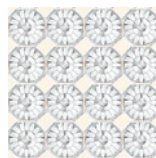
Crystal Mesh XL is available with black, gold and silver casing. Please see the product matrix for all available options.



012 Black



081 Gold



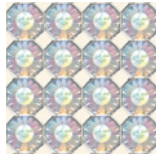
082 Silver

Available Colours & Effects

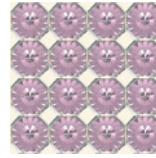
<<<



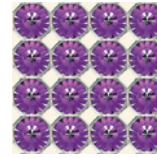
Crystal F
(001)



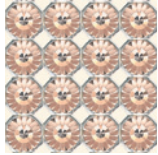
Crystal Aurore Boreale F
(001 AB)



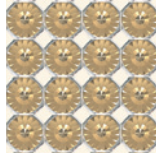
Light Amethyst F
(212)



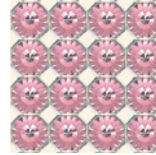
Amethyst F
(204)



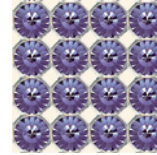
Silk F
(391)



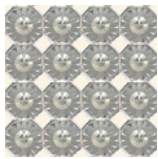
Crystal Golden Shadow F
(001 GSHA)



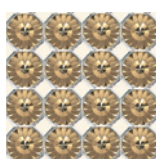
Light Rose F
(223)



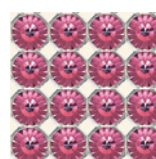
Tanzanite F
(539)



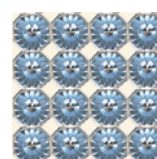
Crystal Silver Shade F
(001 SSHA)



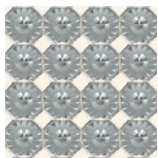
Light Colorado
Topaz F (246)



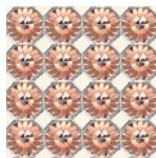
Rose F
(209)



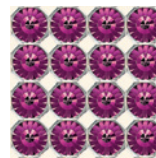
Light Sapphire F
(211)



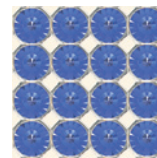
Black Diamond F
(215)



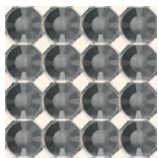
Light Peach F
(362)



Fuchsia F
(502)



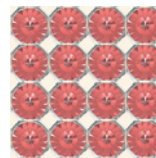
Sapphire F
(206)



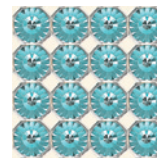
Jet Hematite
(280 HEM)



Topaz F
(203)



Padparadscha F
(542)



Aquamarine F
(202)



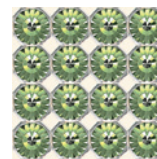
Jet
(280)



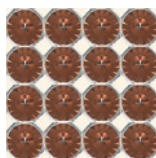
Crystal Copper F
(001 COP)



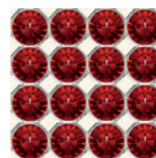
Light Siam F
(227)



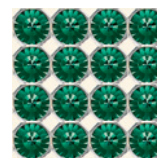
Peridot F
(214)



Smoked Topaz F
(220)



Siam F
(208)

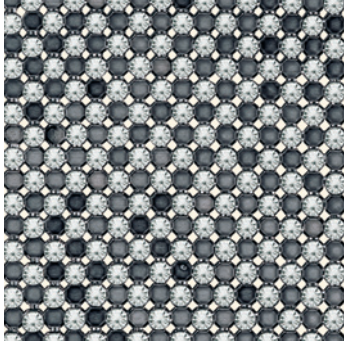


Emerald F
(205)

Classic Colours
Exclusive Colours

Crystal Mesh

40 200



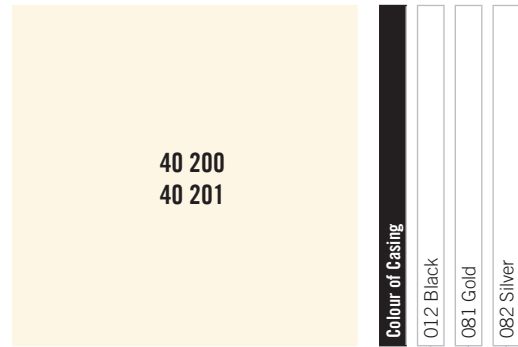
SH	100
S	~500x200
SS	PP 21
M	1 SH
	100%

40 201



R	002-033
SS	PP 21
M	10 M
	100%

Crystal Mesh Metallisée



40 200
40 201

Colour of Casing

012 Black

081 Gold

082 Silver

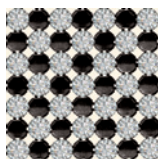
Colour	012 Black	081 Gold	082 Silver
Crystal F (001)	■	■	■
Crystal AB F (001 AB)	■	■	■
Crystal Copper F (001 COP)	■	■	■
Crystal Dorado (001 DOR)	■	■	■
Crystal Golden Shadow F (001 GSHA)	■	■	■
Crystal Metallic Blue F (001 METBL)	■	■	■
Crystal Metallic Light Gold F (001 MLGLD)	■	■	■
Crystal Moonlight F (001 MOL)	■	■	■
Crystal Red Magma F (001 REDM) <i>New!</i>	■	■	■
Crystal Silver Shade F (001 SSHA)	■	■	■
Jet (280)	■	■	■
Jet Hematite (280 HEM)	■	■	■
Jet Nut (280 NUT)	■	■	■
Air Blue Opal (285)	■	■	■
Amethyst F (204)	■	■	■
Aquamarine F (202)	■	■	■
Black Diamond F (215)	■	■	■
Blue Zircon F (229)	■	■	■
Caribbean Blue Opal F (394)	■	■	■
Cyclamen Opal F (398)	■	■	■
Dark Indigo F (288)	■	■	■
Dark Red Coral F (396)	■	■	■
Emerald F (205)	■	■	■
Fern Green F (291)	■	■	■
Fuchsia F (502)	■	■	■
Greige F (284)	■	■	■
Indian Pink F (289)	■	■	■
Jonquil F (213)	■	■	■
Khaki F (550)	■	■	■
Light Amethyst F (212)	■	■	■
Light Colorado Topaz F (246)	■	■	■
Light Grey Opal F (383)	■	■	■
Light Rose F (223)	■	■	■
Light Sapphire F (211)	■	■	■
Light Siam F (227)	■	■	■
Mocca F (286)	■	■	■
Pacific Opal F (390)	■	■	■
Padparadscha F (542)	■	■	■
Palace Green Opal F (393)	■	■	■

<p>40 200 40 201</p>	Colour of Casing	012 Black	081 Gold	082 Silver
	Colour	■	■	■
	Peridot F (214)	■	■	■
	Provence Lavender F (283)	■	■	■
Purple Velvet F (277)	■	■	■	
Rose F (209)	■	■	■	
Rose Water Opal F (395)	■	■	■	
Sand Opal F (287)	■	■	■	
Sapphire F (206)	■	■	■	
Siam F (208)	■	■	■	
Silk F (391)	■	■	■	
Smoked Topaz F (220)	■	■	■	
Tanzanite F (539)	■	■	■	
Topaz F (203)	■	■	■	
Vintage Rose F (319)	■	■	■	
Light Multi F (908)*	■	■	■	
Rainbow Multi F (909)**	■	■	■	

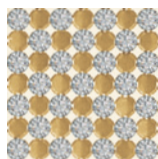
Available Casing Colours

<<<

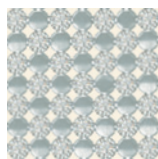
Crystal Mesh Metallisée is available with black, gold and silver casing. Please see the respective product matrix for all available options.



012 Black



081 Gold



082 Silver

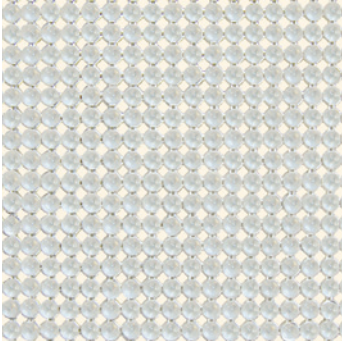
* Light Multi F consists of Crystal, Peridot, Light Amethyst, Jonquil, Aquamarine.

** Rainbow Multi F consists of Topaz, Light Siam, Fuchsia, Peridot, Sapphire.

Crystal Mesh

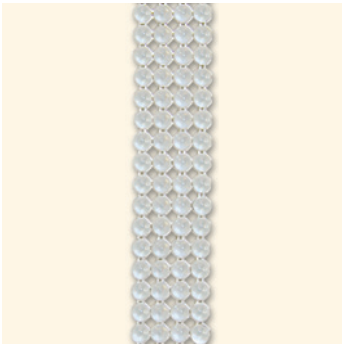
Crystal Pearl Mesh

40 300



SH	100
S	~500x200
SS	2.7 mm
M	1 SH
	100%

40 301



R	004-033
SS	2.7 mm
M	10 M
	100%

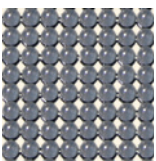
40 300
40 301

Colour	Colour of Casing	012 Black	081 Gold	082 Silver
● Crystal (001)		■	■	■
● Jet (280)		■	■	■
● Black Diamond (215)		■	■	■
● Blue Zircon (229)		■	■	■
● Jonquil (213)		■	■	■
● Lavender (240)		■	■	■
● Light Amethyst (212)		■	■	■
● Light Azure (361)		■	■	■
● Light Rose (223)		■	■	■
● Light Siam (227)		■	■	■
● Silk (391)		■	■	■
● Topaz (203)		■	■	■
● White Opal (234)		■	■	■

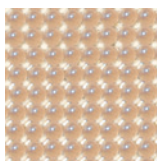
Available Casing Colours

<<<

Crystal Pearl Mesh is available with black, gold and silver casing. Please see the product matrix for all available options.



012 Black



081 Gold



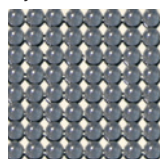
082 Silver

Available Colours & Effects

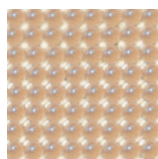
<<<

Crystal Pearl Mesh is available with black, gold or silver casing. The pearl colour changes depending on the colour of the casing.

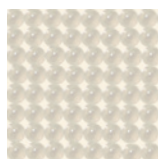
Crystal (001)



012 Black

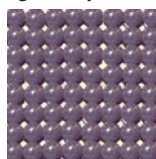


081 Gold

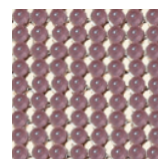


082 Silver

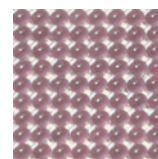
Light Amethyst (212)



012 Black

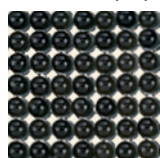


081 Gold



082 Silver

Black Diamond (215)



012 Black

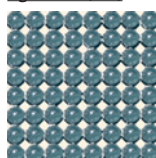


081 Gold

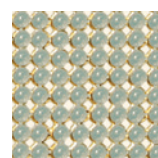


082 Silver

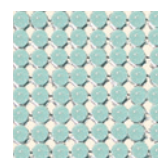
Light Azure (361)



012 Black

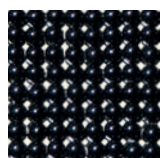


081 Gold

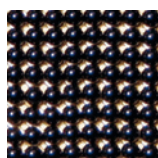


082 Silver

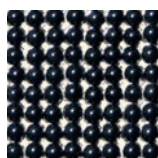
Jet (280)



012 Black

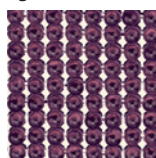


081 Gold

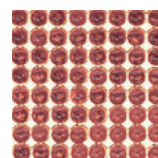


082 Silver

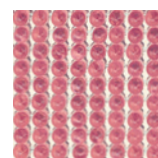
Light Rose (223)



012 Black

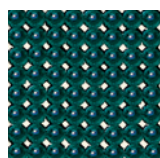


081 Gold

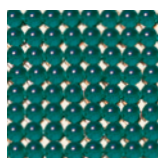


082 Silver

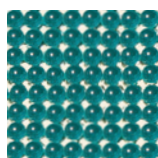
Blue Zircon (229)



012 Black

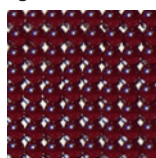


081 Gold

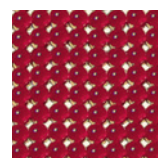


082 Silver

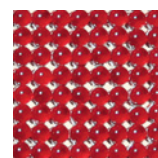
Light Siam (227)



012 Black



081 Gold

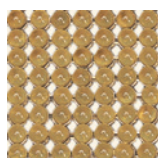


082 Silver

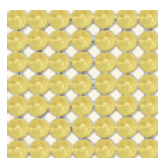
Jonquil (213)



012 Black

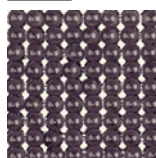


081 Gold

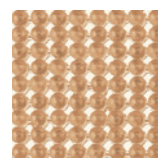


082 Silver

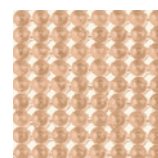
Silk (391)



012 Black

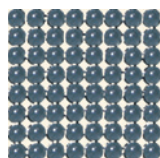


081 Gold

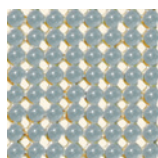


082 Silver

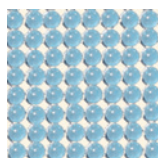
Lavender (240)



012 Black

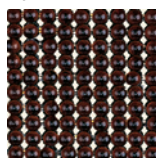


081 Gold

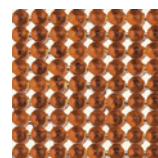


082 Silver

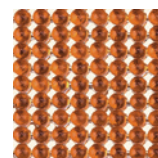
Topaz (203)



012 Black

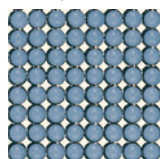


081 Gold

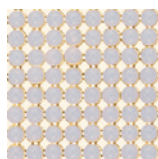


082 Silver

White Opal (234)



012 Black



081 Gold

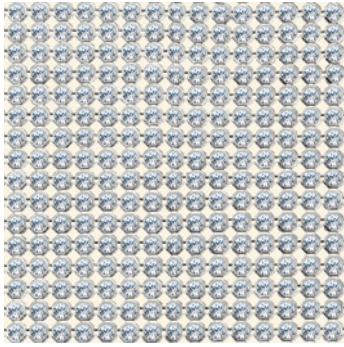


082 Silver

Classic Colours
Exclusive Colours

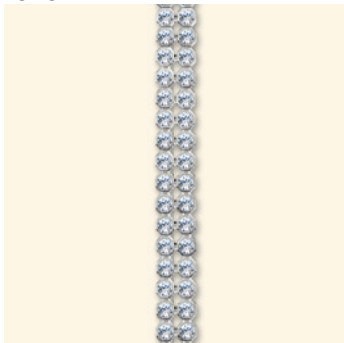
Crystal Mesh

40 400



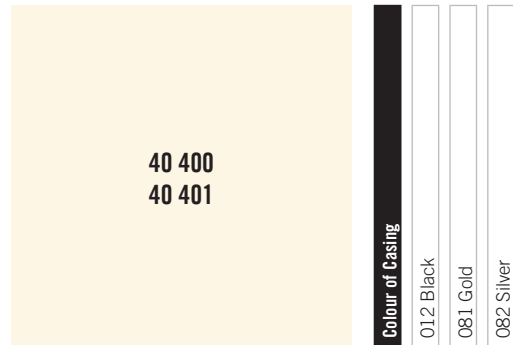
SH	100
S	~500x200
SS	PP 14
M	1 SH
	100%

40 401



R	002-033
SS	PP 14
M	10 M
	100%

Crystal Aerial Mesh



40 400
40 401

Colour of Casing

012 Black

081 Gold

082 Silver

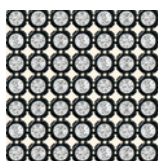
Colour	012 Black	081 Gold	082 Silver
Crystal F (001)	■	■	■
Crystal AB F (001 AB)	■	■	■
Crystal Copper F (001 COP)	■	■	■
Crystal Dorado (001 DOR)	■	■	■
Crystal Golden Shadow F (001 GSHA)	■	■	■
Crystal Metallic Blue F (001 METBL)	■	■	■
Crystal Metallic Light Gold F (001 MLGLD)	■	■	■
Crystal Moonlight F (001 MOL)	■	■	■
Crystal Red Magma F (001 REDM) <i>New!</i>	■	■	■
Crystal Silver Shade F (001 SSHA)	■	■	■
Jet (280)	■	■	■
Jet Hematite (280 HEM)	■	■	■
Jet Nut (280 NUT)	■	■	■
Air Blue Opal (285)	■	■	■
Amethyst F (204)	■	■	■
Aquamarine F (202)	■	■	■
Black Diamond F (215)	■	■	■
Blue Zircon F (229)	■	■	■
Caribbean Blue Opal F (394)	■	■	■
Cyclamen Opal F (398)	■	■	■
Dark Indigo F (288)	■	■	■
Dark Red Coral F (396)	■	■	■
Emerald F (205)	■	■	■
Fern Green F (291)	■	■	■
Fuchsia F (502)	■	■	■
Greige F (284)	■	■	■
Indian Pink F (289)	■	■	■
Jonquil F (213)	■	■	■
Khaki F (550)	■	■	■
Light Amethyst F (212)	■	■	■
Light Colorado Topaz F (246)	■	■	■
Light Grey Opal F (383)	■	■	■
Light Rose F (223)	■	■	■
Light Sapphire F (211)	■	■	■
Light Siam F (227)	■	■	■
Mocca F (286)	■	■	■
Pacific Opal F (390)	■	■	■
Padparadscha F (542)	■	■	■
Palace Green Opal F (393)	■	■	■

40 400 40 401	Colour of Casing	012 Black	081 Gold	082 Silver
	Colour			
	Peridot F (214)	■	■	■
	Provence Lavender F (283)	■	■	■
Purple Velvet F (277)	■	■	■	
Rose F (209)	■	■	■	
Rose Water Opal F (395)	■	■	■	
Sand Opal F (287)	■	■	■	
Sapphire F (206)	■	■	■	
Siam F (208)	■	■	■	
Silk F (391)	■	■	■	
Smoked Topaz F (220)	■	■	■	
Tanzanite F (539)	■	■	■	
Topaz F (203)	■	■	■	
Vintage Rose F (319)	■	■	■	
Light Multi F (908)*	■	■	■	
Rainbow Multi F (909)**	■	■	■	

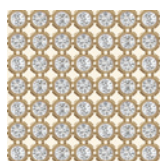
Available Casing Colours

<<<

Crystal Aerial Mesh is available with black, gold and silver casing. Please see the product matrix for all available options.



012 Black



081 Gold



082 Silver

Available Colours & Effects

<<<

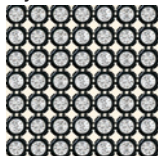
Please see all available casings and crystal colours & effects on the next pages.

* Light Multi F consists of Crystal, Peridot, Light Amethyst, Jonquil, Aquamarine.
 ** Rainbow Multi F consists of Topaz, Light Siam, Fuchsia, Peridot, Sapphire.

Crystal Mesh

Crystal Aerial Mesh

Crystal F (001)



012 Black

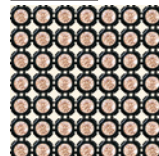


081 Gold



082 Silver

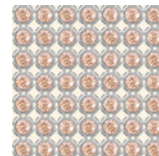
Silk F (391)



012 Black

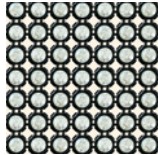


081 Gold



082 Silver

Crystal Moonlight F (001 MOL)



012 Black

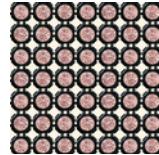


081 Gold

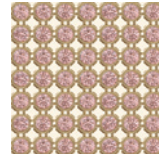


082 Silver

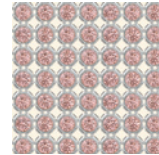
Vintage Rose F (319)



012 Black



081 Gold

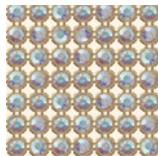


082 Silver

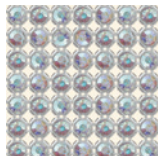
Crystal Aurore Boreale F (001 AB)



012 Black

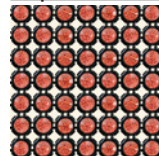


081 Gold

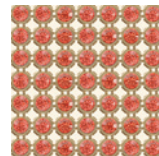


082 Silver

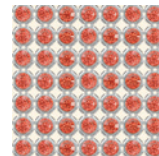
Padparadscha F (542)



012 Black



081 Gold



082 Silver

Crystal Silver Shade F (001 SSHA)



012 Black

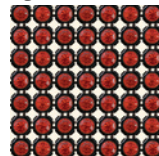


081 Gold

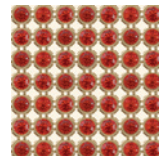


082 Silver

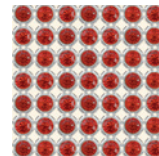
Light Siam F (227)



012 Black

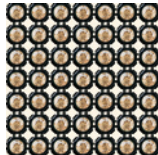


081 Gold

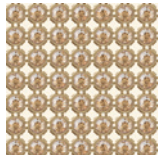


082 Silver

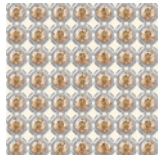
Crystal Golden Shadow F (001 GSHA)



012 Black

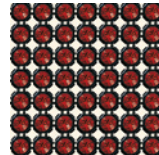


081 Gold

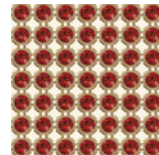


082 Silver

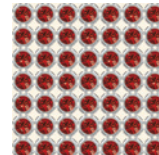
Crystal Red Magma F (001 REDM) ^{New!}



012 Black

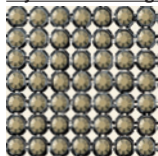


081 Gold



082 Silver

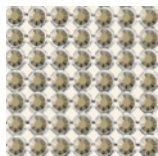
Crystal Metallic Light Gold F (001 MLGLD)



012 Black

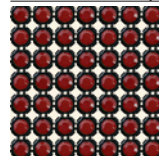


081 Gold

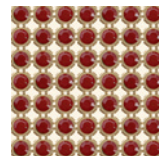


082 Silver

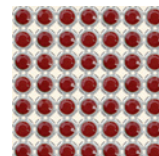
Dark Red Coral F (369)



012 Black



081 Gold



082 Silver

Crystal Dorado F (001 DOR)



012 Black

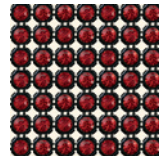


081 Gold

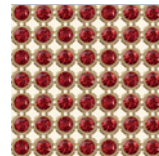


082 Silver

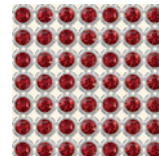
Siam F (208)



012 Black

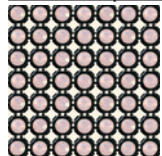


081 Gold



082 Silver

Rose Water Opal F (395)



012 Black

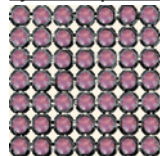


081 Gold



082 Silver

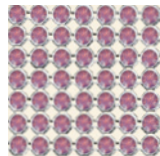
Cyclamen Opal F (398)



012 Black



081 Gold

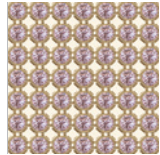


082 Silver

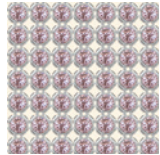
Light Amethyst F (212)



012 Black

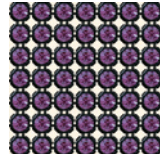


081 Gold

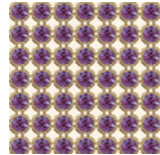


082 Silver

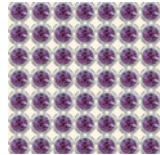
Amethyst F (204)



012 Black

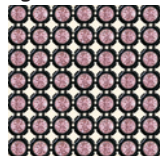


081 Gold



082 Silver

Light Rose F (223)



012 Black

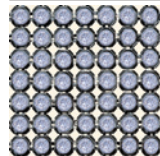


081 Gold

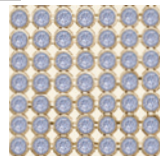


082 Silver

Provence Lavender F (283)



012 Black

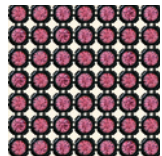


081 Gold

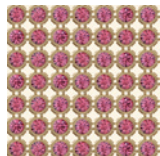


082 Silver

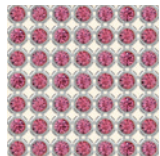
Rose F (209)



012 Black

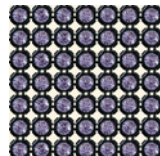


081 Gold

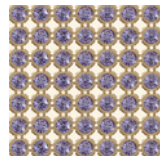


082 Silver

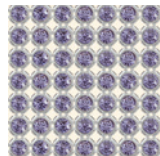
Tanzanite F (539)



012 Black

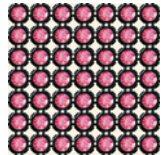


081 Gold

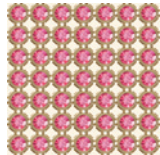


082 Silver

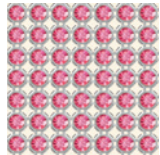
Indian Pink (289)



012 Black

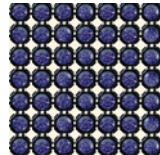


081 Gold

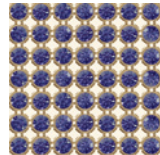


082 Silver

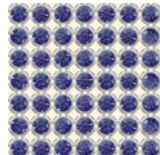
Purple Velvet F (277)



012 Black

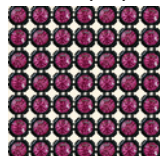


081 Gold

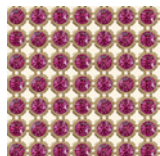


082 Silver

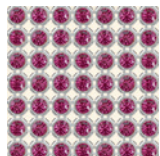
Fuchsia F (502)



012 Black

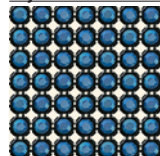


081 Gold

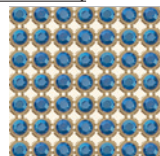


082 Silver

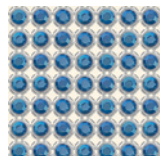
Crystal Metallic Blue F (001 METBL)



012 Black

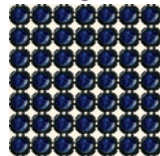


081 Gold

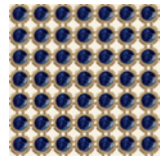


082 Silver

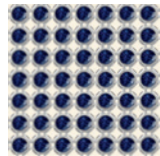
Dark Indigo (288)



012 Black



081 Gold

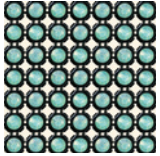


082 Silver

Crystal Mesh

Crystal Aerial Mesh

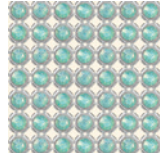
Pacific Opal F (390)



012 Black

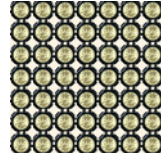


081 Gold



082 Silver

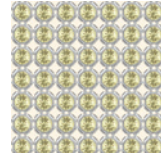
Jonquil F (213)



012 Black

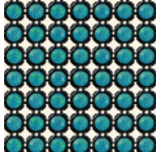


081 Gold

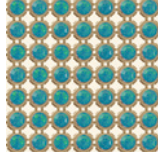


082 Silver

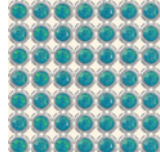
Caribbean Blue Opal F (394)



012 Black



081 Gold

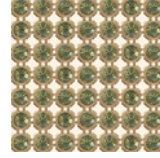


082 Silver

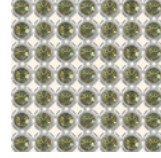
Khaki F (550)



012 Black

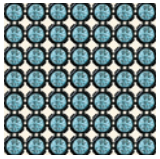


081 Gold

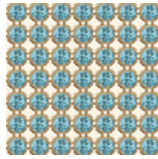


082 Silver

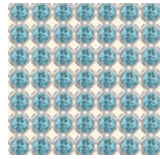
Aquamarine F (202)



012 Black

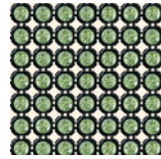


081 Gold

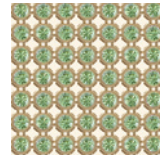


082 Silver

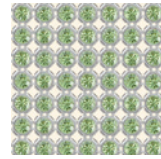
Peridot F (214)



012 Black

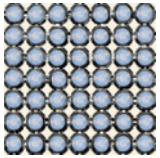


081 Gold

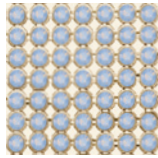


082 Silver

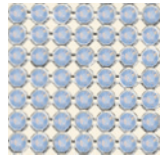
Air Blue Opal F (285)



012 Black

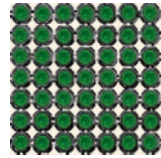


081 Gold

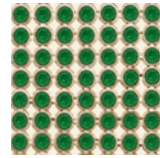


082 Silver

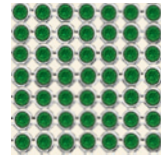
Fern Green F (291)



012 Black

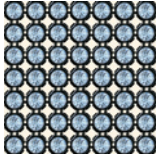


081 Gold

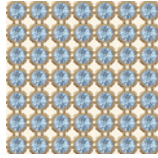


082 Silver

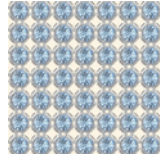
Light Sapphire F (211)



012 Black

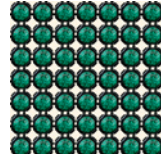


081 Gold

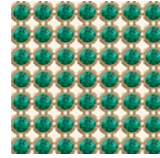


082 Silver

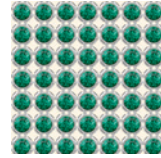
Emerald F (205)



012 Black

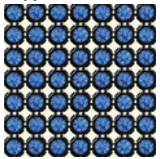


081 Gold

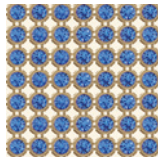


082 Silver

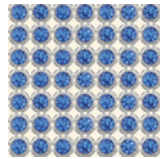
Sapphire F (206)



012 Black

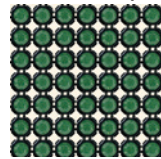


081 Gold

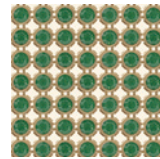


082 Silver

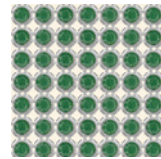
Palace Green Opal F (393)



012 Black

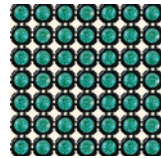


081 Gold

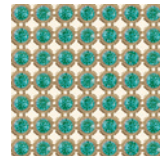


082 Silver

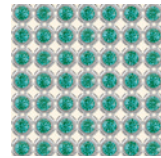
Blue Zircon F (229)



012 Black

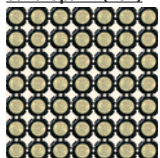


081 Gold



082 Silver

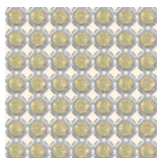
Sand Opal F (287)



012 Black

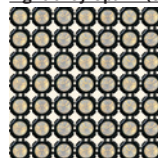


081 Gold



082 Silver

Light Grey Opal F (383)



012 Black



081 Gold

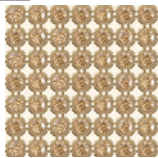


082 Silver

Light Colorado Topaz F (246)



012 Black

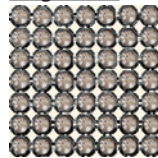


081 Gold



082 Silver

Greige F (284)



012 Black

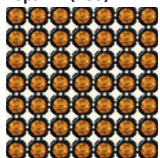


081 Gold

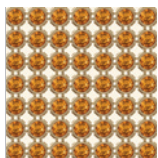


082 Silver

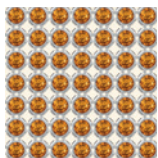
Topaz F (203)



012 Black

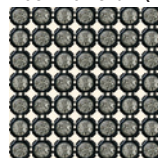


081 Gold

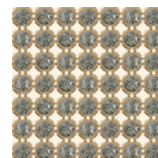


082 Silver

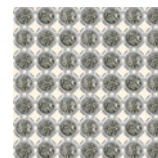
Black Diamond F (215)



012 Black

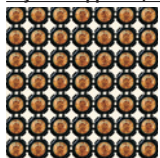


081 Gold

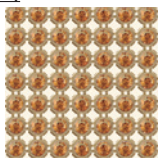


082 Silver

Crystal Copper F (001 COP)



012 Black

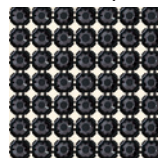


081 Gold

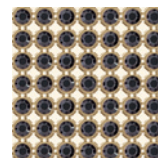


082 Silver

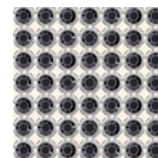
Jet Hematite (280 HEM)



012 Black



081 Gold

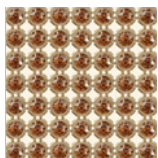


082 Silver

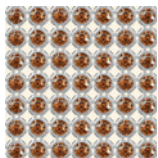
Smoked Topaz F (220)



012 Black

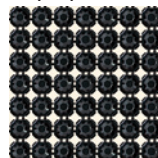


081 Gold

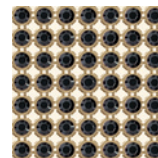


082 Silver

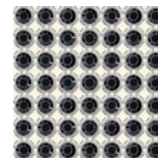
Jet (280)



012 Black



081 Gold

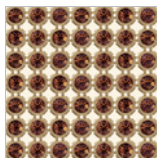


082 Silver

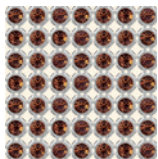
Mocca F (286)



012 Black

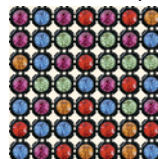


081 Gold

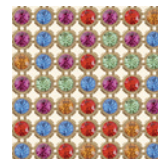


082 Silver

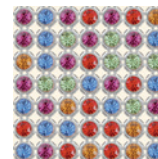
Rainbow Multi F (909)*



012 Black

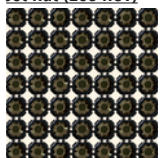


081 Gold

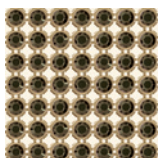


082 Silver

Jet Nut (280 NUT)



012 Black

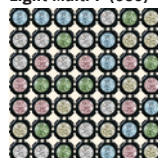


081 Gold

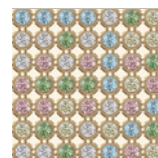


082 Silver

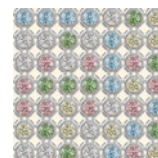
Light Multi F (908)**



012 Black



081 Gold



082 Silver

Classic Colours
Exclusive Colours

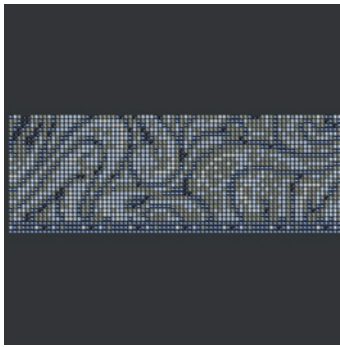
* Light Multi F consists of Crystal, Peridot, Light Amethyst, Jonquil, Aquamarine.

** Rainbow Multi F consists of Topaz, Light Siam, Fuchsia, Peridot, Sapphire.

Article Explanation

<<<

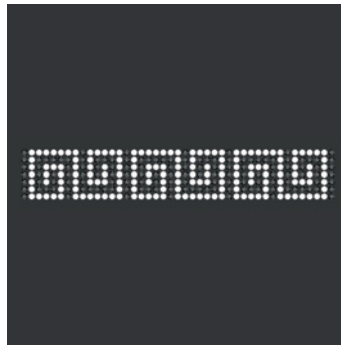
40 702



C	012-215/001METBL/211/001/280HEM
E	PP21/PP21/PP21/PP21/PP21
S	~230x82
M	4 PCS
	19%

40 907

07



C	082-001/280
E	SS24/SS24
S	~257x41
M	5 PCS
	16%

40 702	C	E	S	M	19%
Article number	Colour assortment	Elements	Motif size in mm	Minimum order quantity in pieces (PCS)	Documentation size in %
	Colour of casing (012) is separated from crystal colours with a hyphen. Colour code 1 (215) corresponds with element 1 (PP21); colour code 2 (001 METBL) corresponds with element 2 (PP21) etc.	Crystal Mesh Standard and Metallisée (PP21), Crystal Mesh XL (SS24), Crystal Pearl Mesh (P2.7) and Crystal Aerial Mesh (PP14)			25%: total view of motif 100%: enlarged view of segment
	For details, please refer to the colour overview of Chatons at the beginning of this Collection.	For details, please refer to the sizes overview at the end of the Collection.			

40 907	C	E	S	M	07	16%
Article number	Colour assortment	Elements	Motif size in mm	Minimum order quantity in pieces (PCS)	This product is shown on flag number 7.	Documentation size in %
	Colour of casing (082) is separated from crystal colours with a hyphen. Colour code 1 (001) corresponds with element 1 (SS24); colour code 2 (280) corresponds with element 2 (SS24) etc.	Crystal Mesh Standard and Metallisée (PP21), Crystal Mesh XL (SS24), Crystal (P2.7) and Crystal Aerial Mesh (PP14)				
	For details, please refer to the colour overview of Chatons at the beginning of this Collection.	For details, please refer to the sizes overview at the end of the Collection.				

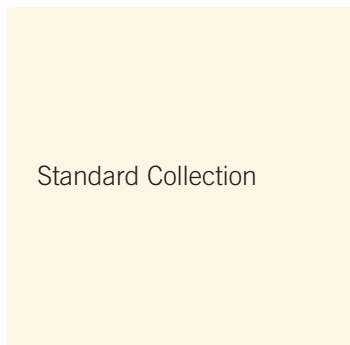
Ordering Example & Product Variety Explanation

<<<

40 702	012	215	001 METBL	211	001	280 HEM
Article number	Colour of casing	Crystal colour corresponding to element 1; colour of most frequently used element in the motif	Crystal colour corresponding to element 2; colour of second most frequently used element in the motif	Crystal colour corresponding to element 3; colour of third most frequently used element in the motif	Crystal colour corresponding to element 4; colour of fourth most frequently used element in the motif	Crystal colour corresponding to element 5; colour of fifth most frequently used element in the motif
	012 Black* 081 Gold** 082 Silver**	Please see the respective product matrix for all available code references.				

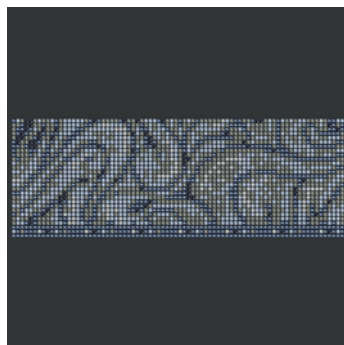
40 907	082	001	280
Article number	Colour of casing	Crystal colour corresponding to element 1; colour of most frequently used element in the motif	Crystal colour corresponding to element 2; colour of second most frequently used element in the motif
	012 Black* 081 Gold** 082 Silver**	Please see the respective product matrix for all available code references.	

* Alu: 012 Black
 ** Brass: 081 Gold, 082 Silver



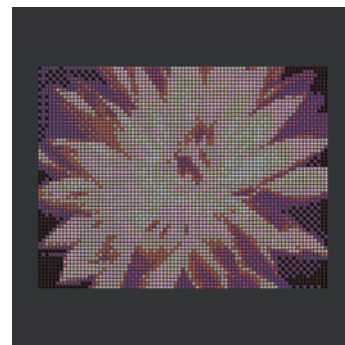
Standard Collection

40 702



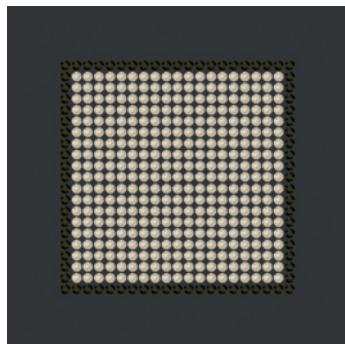
C	012-215/001METBL/211/001/280HEM
E	PP21/PP21/PP21/PP21/PP21
S	~230x82
M	4 PCS 19%

40 705



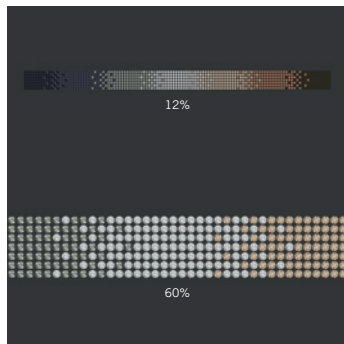
C	012-223/212/001GSHA/213/502/542/204/286/001
E	PP21/.../PP21
S	~239x183
M	2 PCS 16%

40 709



C	012-383/280NUT
E	PP21/PP21
S	~62x62
M	24 PCS 50%

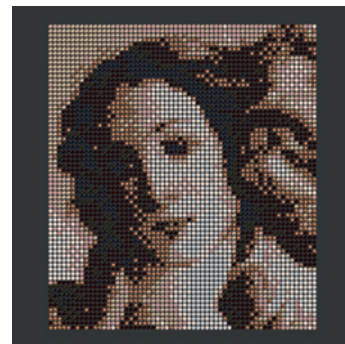
40 722



C	081-001GSHA/280HEM/001/220/215/280NUT/280
E	PP21/PP21/PP21/PP21/PP21/PP21/PP21
S	~336x20
M	9 PCS

02

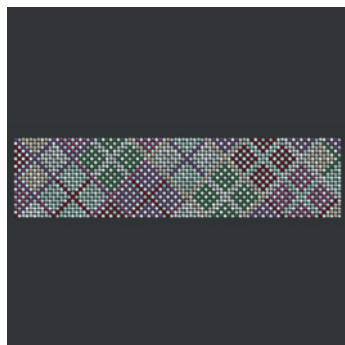
40 724*



C	012-286/246/391/319/001COP/220/001/280/280NUT
E	PP21/.../PP21
S	~200x177
M	2 PCS 20%

02

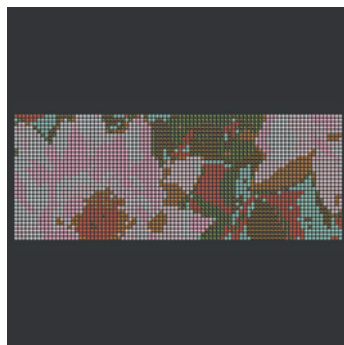
40 725*



C	082-204/001/390/502/393/208/246
E	PP21/PP21/PP21/PP21/PP21/PP21/PP21
S	~254x62
M	3 PCS 17%

02

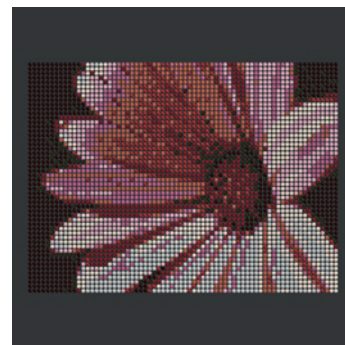
40 726



C	082-223/001/395/001DOR/542/550/203/390
E	PP21/.../PP21
S	~253x97
M	2 PCS 17%

02

40 727



C	012-286/542/208/223/209/227/391/001/280NUT
E	PP21/.../PP21
S	~206x153
M	2 PCS 20%

02

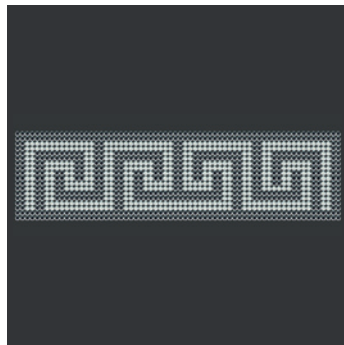
40 728



C	012-391/394/202/280HEM
E	PP14/PP14/PP14/PP14
S	~103x91
M	8 PCS 42%

05

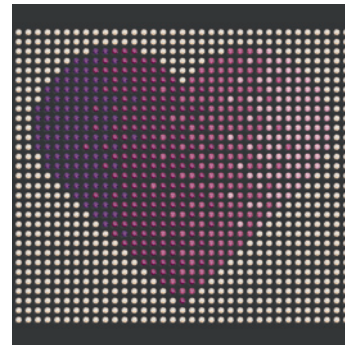
40 729



C	082-280/001MOL
E	PP14/PP14
S	~195x53
M	6 PCS 22%

05

40 730



C	012-391/502/209/204/223
E	PP14/PP14/PP14/PP14/PP14
S	~103x91
M	8 PCS 43%

05

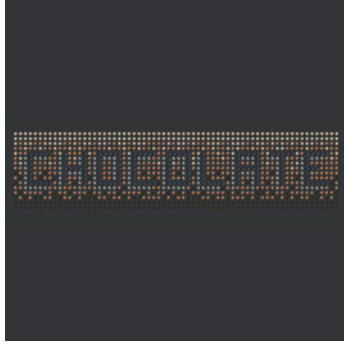
* Please note that slight colour changes have been made.

Crystal Mesh

Motives

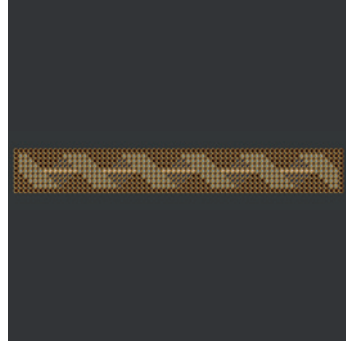
Standard Collection

40 731 05



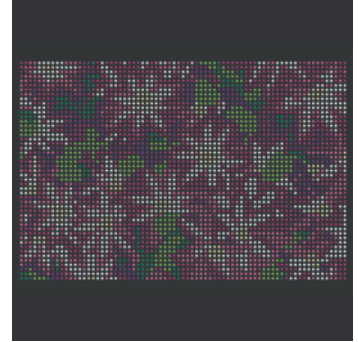
C	012-001COP/001GSHA/280NUT/280HEM/215
E	PP14/PP14/PP14/PP14/PP14
S	~195x47
M	8 PCS 22%

40 732 05



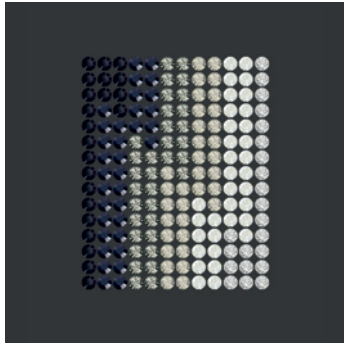
C	081-286/215/280HEM/001GSHA
E	PP14/PP14/PP14/PP14
S	~198x27
M	14 PCS 22%

40 733 05



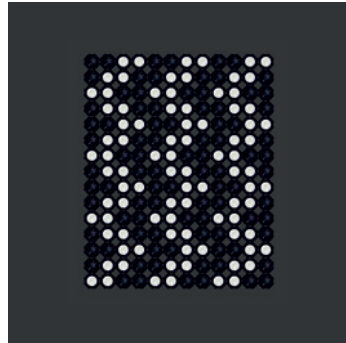
C	012-502/001/209/204/214/205/213
E	PP14/PP14/PP14/PP14/PP14/PP14/PP14
S	~215x145
M	2 PCS 20%

40 741 Product Summaries



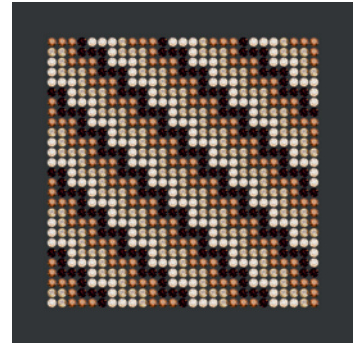
C	082-001MOL/001SSHA/280HEM/215/001/280
E	PP21/PP21/PP21/PP21/PP21/PP21
S	~35x44
M	56 PCS 70%

40 742 Product Summaries



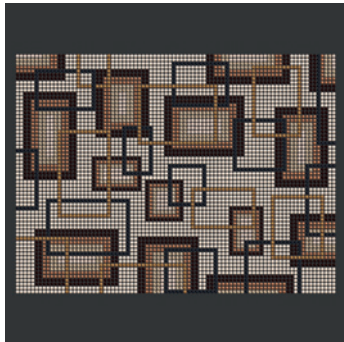
C	012-001MOL/280
E	PP14/PP14
S	~35x44
M	56 PCS 70%

40 744



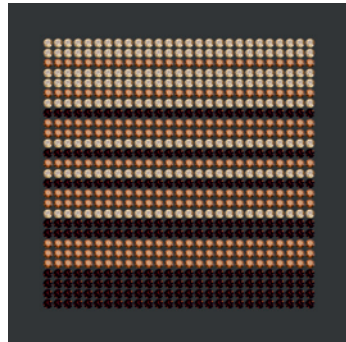
C	081-220/391/246/286
E	PP21/PP21/PP21/PP21
S	~79x79
M	12 PCS 45%

40 745*



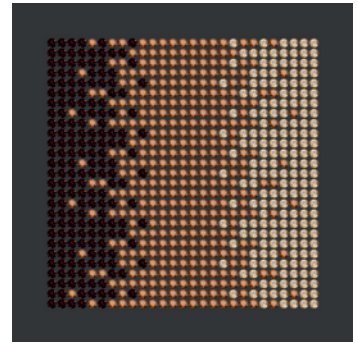
C	081-391/286/220/246/280/203/284
E	PP21/PP21/PP21/PP21/PP21/PP21/PP21
S	~248x186
M	2 PCS 17%

40 746



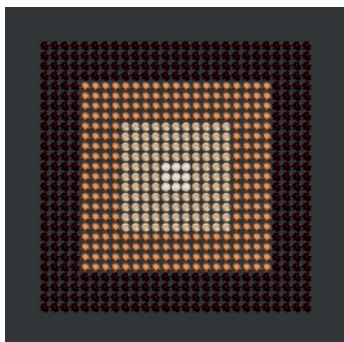
C	081-220/286/246
E	PP21/PP21/PP21
S	~79x79
M	12 PCS 45%

40 747



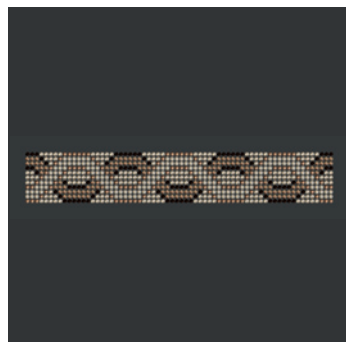
C	081-220/286/246
E	PP21/PP21/PP21
S	~79x79
M	12 PCS 45%

40 748



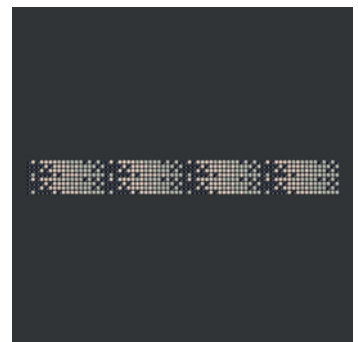
C	081-286/220/246/391
E	PP21/PP21/PP21/PP21
S	~79x79
M	12 PCS 45%

40 749



C	012-246/001GSHA/001COP/220/286
E	PP21/PP21/PP21/PP21/PP21
S	~194x32
M	15 PCS 13%

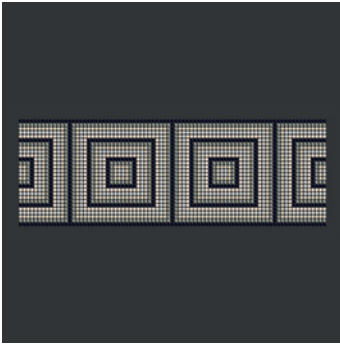
40 750



C	012-001SSHA/284/280HEM
E	PP21/PP21/PP21
S	~212x23
M	16 PCS 20%

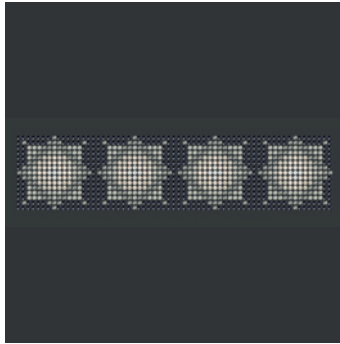
* Please note that slight colour changes have been made.

40 751



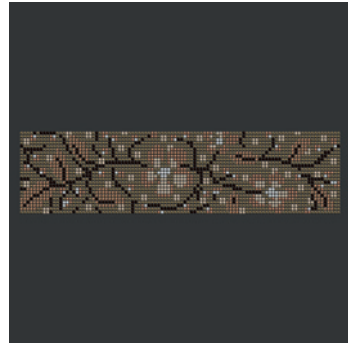
C	012-215/280/383/001/391
E	PP21/PP21/PP21/PP21/PP21
S	~239x82
M	4 PCS
	17%

40 752



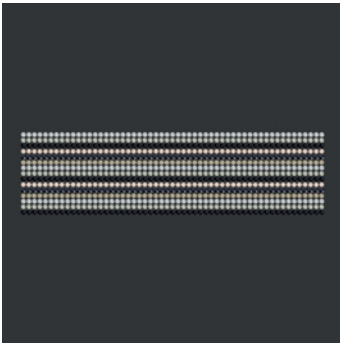
C	012-280HEM/215/001SSHA/383/391/ 001MOL
E	PP21/PP21/PP21/PP21/PP21/PP21
S	~186x44
M	11 PCS
	14%

40 753



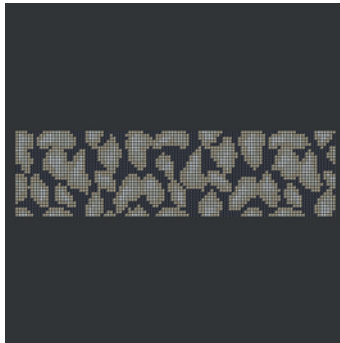
C	012-001DOR/286/220/001COP/246/ 001GSHA/001
E	PP21/PP21/PP21/PP21/PP21/PP21
S	~289x74
M	2 PCS
	15%

40 754



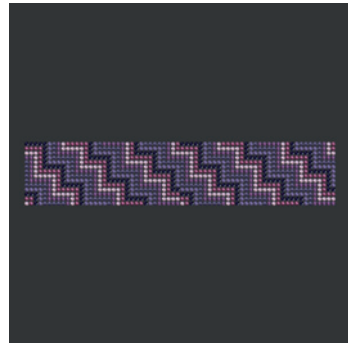
C	012-001/001SSHA/280/284/001MLGLD/ 280HEM
E	PP21/PP21/PP21/PP21/PP21/PP21
S	~162x44
M	12 PCS
	25%

40 755



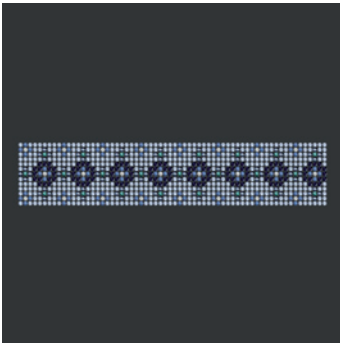
C	012-001MLGLD/280HEM/001SSHA/001
E	PP21/PP21/PP21/PP21
S	~310x82
M	2 PCS
	13%

40 756



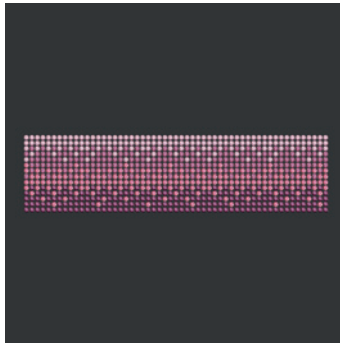
C	012-277/204/502/212/539/288
E	PP21/PP21/PP21/PP21/PP21/PP21
S	~200x41
M	8 PCS
	20%

40 757



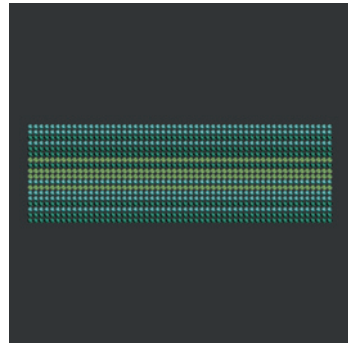
C	012-211/288/206/001METBL/001/229
E	PP21/PP21/PP21/PP21/PP21/PP21
S	~189x38
M	10 PCS
	20%

40 758



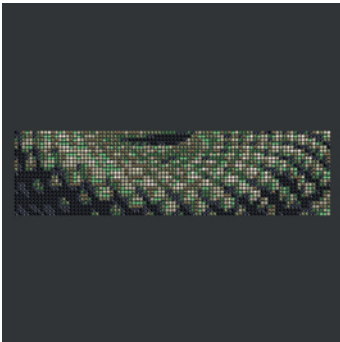
C	012-502/209/289/223
E	PP21/PP21/PP21/PP21
S	~162x41
M	12 PCS
	25%

40 759



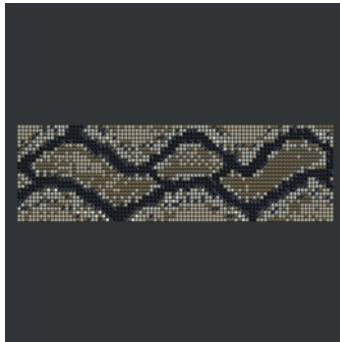
C	012-229/205/214
E	PP21/PP21/PP21
S	~162x53
M	9 PCS
	25%

40 761



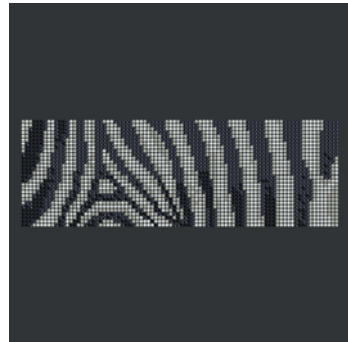
C	012-280/280HEM/550/001DOR/393/ 001MLGLD/291/213/391
E	PP21/PP21/PP21/PP21/PP21/PP21/ PP21/PP21
S	~253x68
M	2 PCS
	16%

40 762



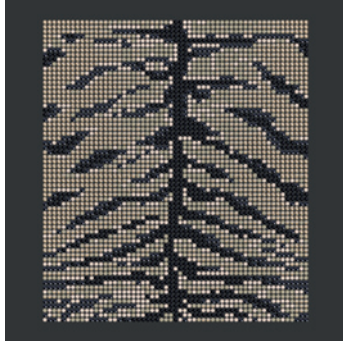
C	012-001DOR/001MLGLD/280/001SSHA/ 280HEM/001MOL
E	PP21/PP21/PP21/PP21/PP21/PP21
S	~253x76
M	2 PCS
	16%

40 763



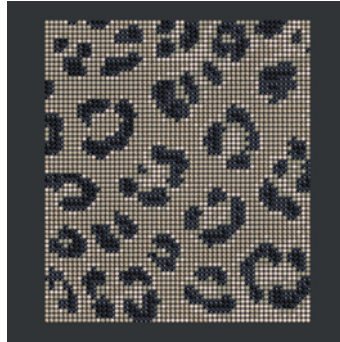
C	012-280HEM/001SSHA/001MOL/280
E	PP21/PP21/PP21/PP21
S	~253x85
M	2 PCS
	16%

40 764



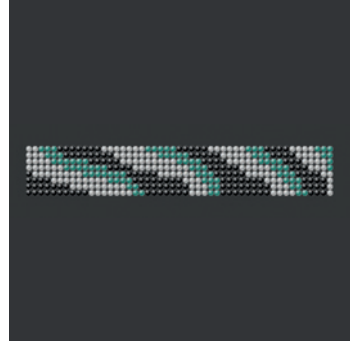
C	012-280/284/001MLGLD/001GSHA/246/280HEM
E	PP21/PP21/PP21/PP21/PP21/PP21
S	~168x192
M	2 PCS 13%

40 765



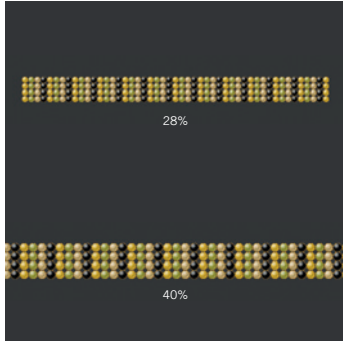
C	012-280HEM/246/284/001GSHA/001MLGLD/280
E	PP21/PP21/PP21/PP21/PP21/PP21
S	~168x192
M	2 PCS 13%

40 802



C	082-001/280/229
E	P2.7/P2.7/P2.7
S	~144x23
M	24 PCS 28%

40 803



C	081-213/361/280/001
E	P2.7/P2.7/P2.7/P2.7/P2.7
S	~144x12
M	48 PCS

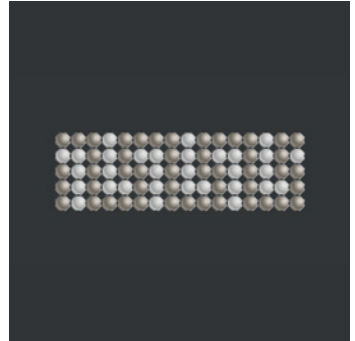
40 804



C	012-001/213/280
E	P2.7/P2.7/P2.7
S	~145x44
M	12 PCS 28%

40 813

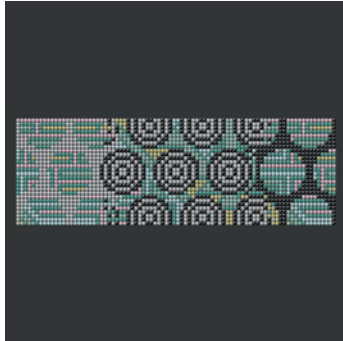
Product Summaries



C	082-215/001
E	P2.7/P2.7
S	~47x15
M	136 PCS 70%

40 817

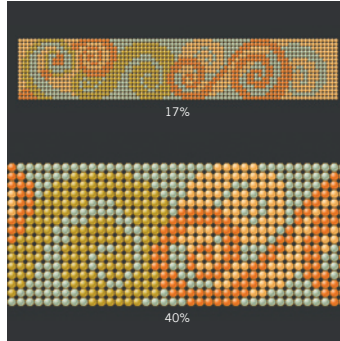
03



C	082-001/229/280/212/280/240/361/213
E	P2.7/P2.7/P2.7/P2.7/P2.7/P2.7/P2.7
S	~248x83
M	4 PCS 17%

40 818

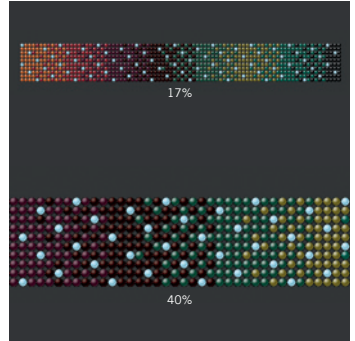
03



C	081-240/391/203/213
E	P2.7/P2.7/P2.7/P2.7
S	~248x47
M	8 PCS

40 819

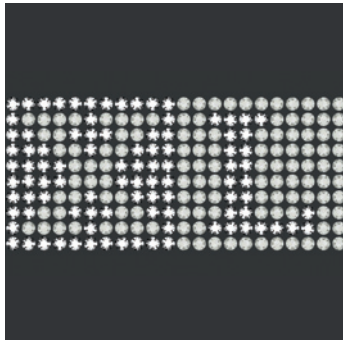
03



C	012-361/229/391/223/227/213/234/203/280
E	P2.7/.../P2.7
S	~248x29
M	12 PCS

40 902

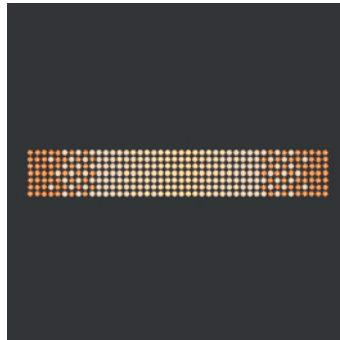
07



C	012-001SSHA/280HEM
E	SS24/SS24
S	~131x59
M	9 PCS 34%

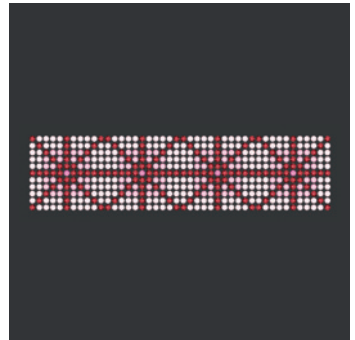
40 903

07



C	081-246/001COP/001GSHA
E	SS24/SS24/SS24
S	~263x41
M	5 PCS 15%

40 904



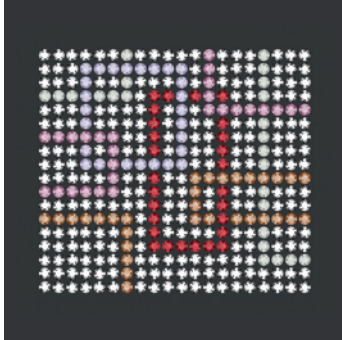
C	082-223/208/209/502
E	SS24/SS24/SS24/SS24
S	~263x65
M	3 PCS 15%

Crystal Mesh

Motives

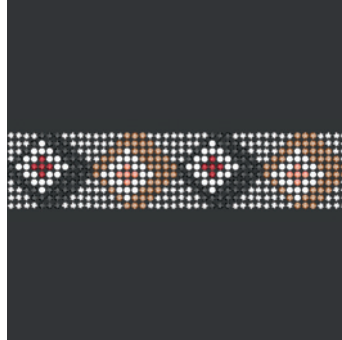
Standard Collection

40 905 07



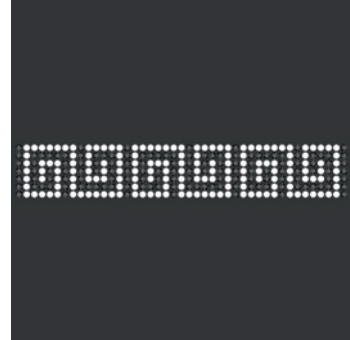
C	081-280HEM/220/208/204/539/001SSHA
E	SS24/SS24/SS24/SS24/SS24/SS24
S	~119x107
M	8 PCS 30%

40 906



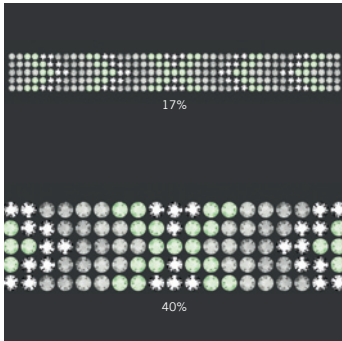
C	012-280HEM/280/220/001/001/208/542
E	SS24/SS24/SS24/SS24/SS24/SS24/SS24
S	~263x59
M	3 PCS 17%

40 907 07



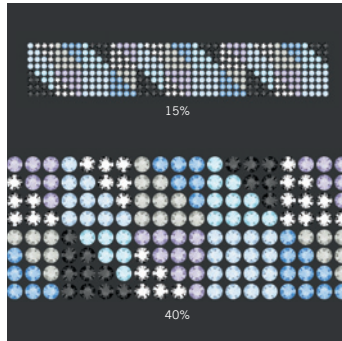
C	082-001/280
E	SS24/SS24
S	~257x41
M	5 PCS 17%

40 908



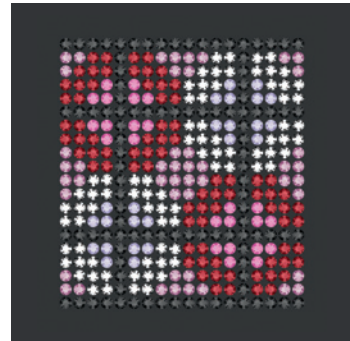
C	082-001SSHA/214/215/280HEM
E	SS24/SS24/SS24/SS24
S	~257x29
M	7 PCS

40 909 07



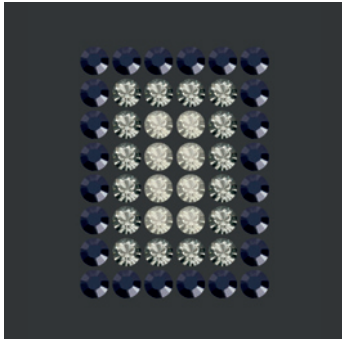
C	012-211/280HEM/202/280/001SSHA/539/206
E	SS24/SS24/SS24/SS24/SS24/SS24/SS24
S	~263x47
M	4 PCS

40 910 07



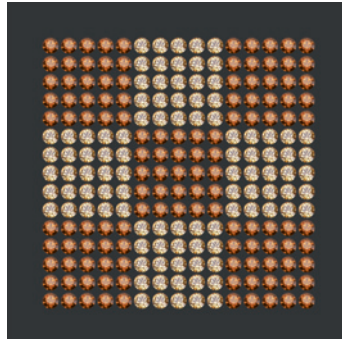
C	012-280/208/280HEM/204/539/502
E	SS24/SS24/SS24/SS24/SS24/SS24
S	~107x119
M	4 PCS 30%

40 914 Product Summaries



C	012-280HEM/215/001SSHA
E	SS24/SS24/SS24
S	~35x47
M	52 PCS 70%

40 916



C	081-220/246
E	SS24/SS24
S	~89x89
M	10 PCS 40%



40 711 15

11%

30%

C	012-280NUT/280/001DOR/286
E	PP21/PP21/PP21/PP21
S	~371x44
M	4 PCS

40 809 12

13%

40%

C	082-213/001/227
E	P2.7/P2.7/P2.7
S	~304x17
M	11 PCS

40 810 18

C	082-280/240/001/223/229/203/213
E	P2.7/P2.7/P2.7/P2.7/P2.7/P2.7/P2.7/P2.7
S	~132x191
M	3 PCS

20%



40 716 15

15%

40%

C	082-227/209/502/223/542/319
E	PP21/PP21/PP21/PP21/PP21/PP21
S	~298x20
M	9 PCS

40 718 12

C	081-240/361
E	P2.7/P2.7
S	~47x59
M	30 PCS

60%



40 712 13

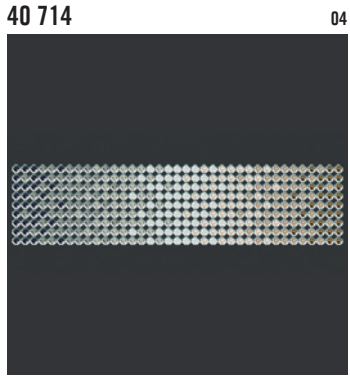
C	012-208/001MOL/280HEM/280/001COP/ 390/001SSHA/280NUT
E	PP21/.../PP21
S	~212x65
M	6 PCS

20%

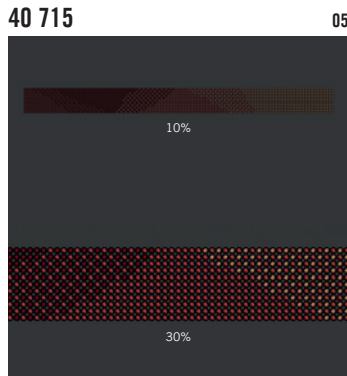
40 713 04

C	082-001SSHA/001MOL/215/391/001GSHA/ 280HEM/001DOR
E	PP21/PP21/PP21/PP21/PP21/PP21
S	~109x26
M	28 PCS

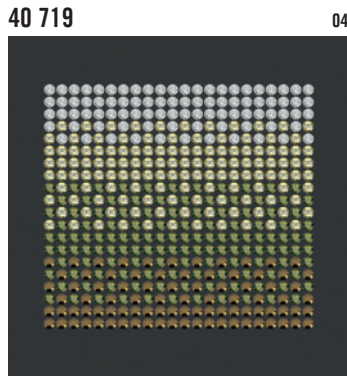
40%



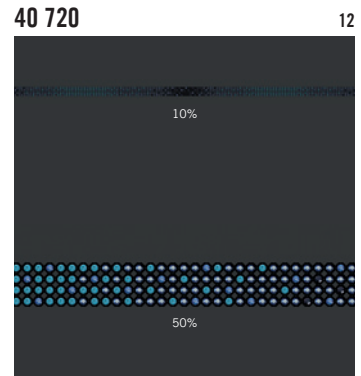
C	082-001SSHA/001MOL/215/391/001GSHA/280HEM/001DOR	
E	PP14/PP14/PP14/PP14/PP14/PP14/PP14	
S	~109x27	
M	28 PCS	40%



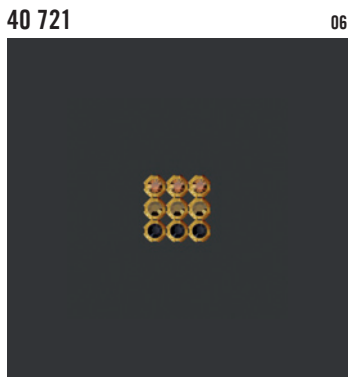
C	012-227/396/001COP/203/208	
E	PP14/PP14/PP14/PP14/PP14	
S	~407x32	
M	6 PCS	



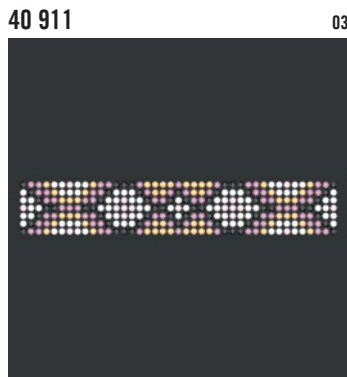
C	082-213/550/001/001DOR	
E	PP21/PP21/PP21/PP21	
S	~65x59	
M	21 PCS	55%



C	012-001METBL/394/280HEM/206/280	
E	PP14/PP14/PP14/PP14/PP14	
S	~251x12	
M	32 PCS	



C	081-001DOR/001COP/280	
E	PP14/PP14/PP14	
S	~9x9	
M	11.033 M (1,246 PCS)	100%

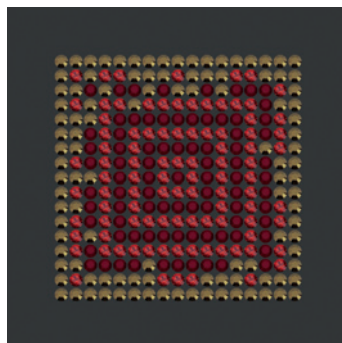


C	012-001/204/280/001GSHA/223	
E	SS24/SS24/SS24/SS24/SS24	
S	~245x41	
M	10 PCS	17%



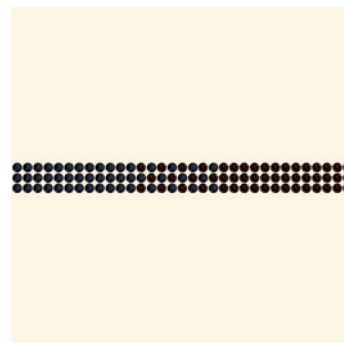
Trend Collection
Autumn/Winter 2009/10

40 706 12



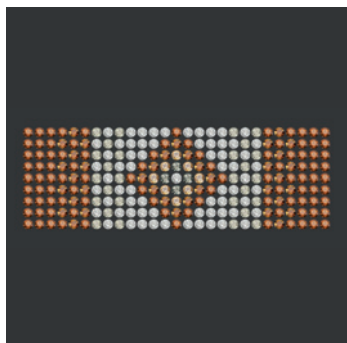
C	081-001DOR/227/396
E	PP21/PP21/PP21
S	~50x50
M	30 PCS 65%

40 707 06



C	012-286/280
E	PP21/PP21
S	~97x9
M	110 PCS 46%

40 912 04

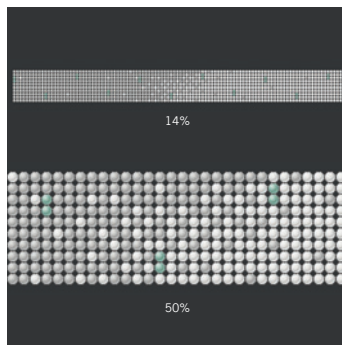


C	012-220/001/001COP/001SSHA/246/215
E	SS24/SS24/SS24/SS24/SS24/SS24
S	~161x53
M	12 PCS 25%



Trend Collection
Spring/Summer 2010

40 815 04

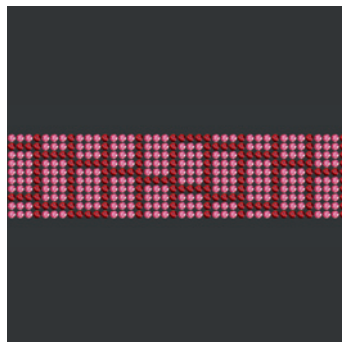


C	082-001/234/361
E	P2.7/P2.7/P2.7
S	~310x29
M	6 PCS



Trend Collection
Autumn/Winter 2010/11

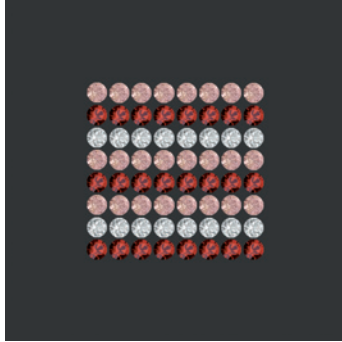
40 743 10



C	081-289/227
E	PP21/PP21
S	~206x29
M	12 PCS 38%

Trend Collection
Spring/Summer 2011

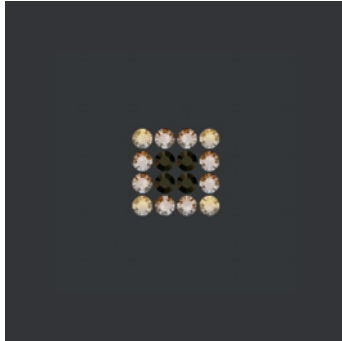
40 760* 12



C	081-227/319/001
E	PP21/PP21/PP21
S	~23x23
M	168 PCS
	100%

Special Collection
Lingerie

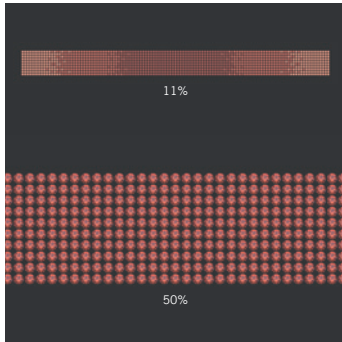
40 734 Harmony 1



C	081-220/213/280NUT
E	PP21/PP21/PP21
S	~12x12
M	672 PCS
	100%

Special Collection
Crystal Wedding

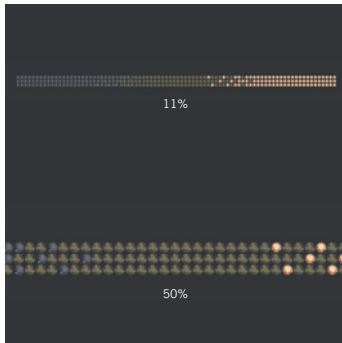
40 735 Passionate Wedding



C	012-227/208/542
E	PP21/PP21/PP21
S	~368x29
M	6 PCS

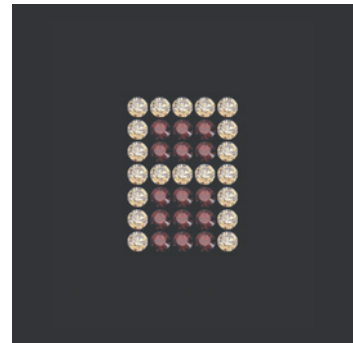
Special Collection
Crystal Loves Leather

40 736 Technical, Timeless



C	012-280NUT/220/280
E	PP21/PP21/PP21
S	~248x9
M	44 PCS

40 737 Technical, Contemporary



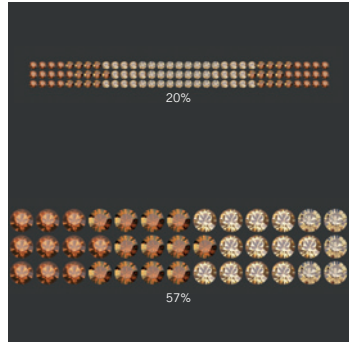
C	081-001GSHA/515
E	PP21/PP21
S	~14x20
M	306 PCS
	100%

* Please note that slight colour changes have been made.

Special Collection
Crystal Loves Leather 2009

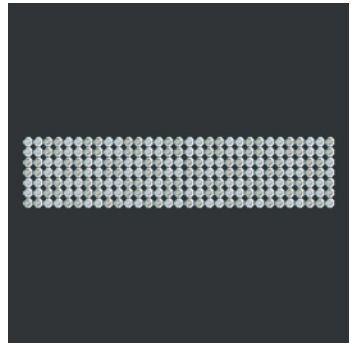
Special Collection
Interior Motives

40 915 Mystic Desert



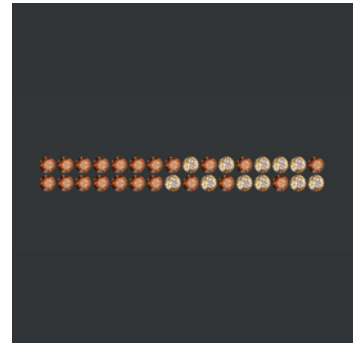
C	081-220/001GSHA/246/001COP
E	SS24/SS24/SS24/SS24
S	~197x17
M	24 PCS

40 738



C	082-001/001SSHA	
E	PP14/PP14	
S	~91x21	
M	48 PCS	45%

40 740



C	081-220/246	
E	PP21/PP21	
S	~47x6	
M	340 PCS	80%

Product Details

<<<

Article Size	Packing Unit = Minimum Order Quantity in Pieces	Average Net Weight in Gram per Packing Unit Alu*	Average Net Weight in Gram per Packing Unit Brass**
40 000 100	1 sheet	270 g	440 g
40 001 002-033	10 metres	8.3 g per row/metre	13 g per row/metre
40 100 100	1 sheet	448 g	672 g
40 101 002-018	10 metres	24.8 g per row/metre	37.2 g per row/metre
40 200 100	1 sheet	180 g	332 g
40 201 002-033	10 metres	5.5 g per row/metre	10 g per row/metre
40 300 100	1 sheet	448 g	588 g
40 301 004-033	10 metres	13.5 g per row/metre	17.8 g per row/metre
40 400 100	1 sheet	170 g	327 g
40 401 022-033	10 metres	5.2 g per row/metre	9.9 g per row/metre

* Alu: 012 Black

** Brass: 081 Gold, 082 Silver

A special motif is any individual design created by the customer, which is different from the Crystal Mesh Standard or Trend Collections. This service opens up many customisation possibilities and enables you to profit from Swarovski's longtime experience and design expertise. A range of customisation options for existing motives is available (see "Customisation Possibilities" below). You may also submit sketches of a design that will suit your special needs – such as a brand image or an image to suit a particular sales campaign. This will then be made up according to your specifications using Computer Aided Design, which allows for easy adjustments according to your needs.

Customisation Possibilities

<<<

- Change of size of an existing motif
- Logos or brand names
- Creation of single motives or rows
- Up to nine colours are possible per Crystal Mesh Motif. Due to the new stone, even for a Crystal Mesh XL Motif up to nine colours can be used in one design.

Ordering Process

<<<

Send the request with a drawing you wish to order to your nearest Swarovski sales office. Make sure you include all measurements to the desired motif. Please also indicate which product group your special motif refers to (Crystal Mesh Standard, Crystal Aerial Mesh etc.). You will then receive a quotation including your article number, minimum order quantity, price, and the line drawing of your special motif in PDF format. Please contact your Swarovski sales office again if any changes need to be made. Your special motif will be produced and delivered following your confirmation.

Please Note

<<<

Please always submit your drawing of the desired motif to represent it in the actual size you require. A small sketch, when enlarged to the desired size, will have blurred lines that will make it difficult to correctly reinterpret. Pictures or drawings representing 100% size of the design or very good quality scans in JPG, BMP or DXF format will ensure that we have clear data to work with. These can also be sent via email or on a CD-ROM. If sending a sewing pattern, please include the whole pattern and not just cut outs. When the sketch is submitted as a hard copy by fax or e-mail, please include a scale legend (e.g. copy/scan with ruler next to the drawing). This will ensure that the desired size of the motif can be identified.

Special productions are generally offered to all our customers if feasibility is given and our General Terms and Conditions are applied. Please note that the simple order of a design does not grant exclusive production of this design to the customer.