



14 CRYSTAL *yarn*

Crystal Yarn is an outstanding innovation that features Beads and Crystal Pearls pre-threaded onto high quality yarns. This exciting product opens up many new application possibilities, particularly in the fields of hand- or machine embroidery, knitting and weaving. It is especially suited to the creation of designs with a very exclusive look. Crystal Yarn is a ready-to-use product available in a large and very diverse assortment that is suitable for all segments.



Article Explanation

<<<

59 200



D	01
SS	2 mm (5000)
M	25, 100 M
	100%

59 200	D	SS	M	100%
Article number	Distance between the crystals	Stone size	Minimum order quantity in metres (M)	Documentation size in %
	This article is available in a distance of 1 cm (approx.).	2 mm for article 5000		

Ordering Example & Product Variety Explanation

<<<

59 200	/01	025	C040	001 SSHA
Article number	2-digit code for approximate distance between the crystals, separated from article number with a slash	Length	Type & colour of yarn	Colour of crystals
59000 (5328 3 mm)		025 25 m/spool	Type of yarn:	Please see the respective product matrix for all available code references.
59010 (5328 4 mm)		050 50 m/spool	A Synthetic Suede	
59100 (5810 3 mm)		100 100 m/spool	C Cotton	
59200 (5000 2 mm)		300 300 m/spool	K Cashmere	
	/01 1 cm		M Mohair	
	/03 3 cm		P Polyester	
	/08 8 cm		Colour of yarn:	
			012 Black	
			013 Bronze	
			014 Brown	
			016 Rose Water Opal	
			022 White	
			024 Black Diamond	
			025 Peridot	
			026 Padparadscha	
			032 Caribbean Blue Opal	
			033 Copper	
			034 Dorado	
			035 Cream	
			036 Golden Shadow	
			037 Light Siam	
			038 Montana	
			039 Powder Rose	
			040 Silver Shade	
			041 Smoked Topaz	
			042 Jet Hematite	
			043 Light Grey	
			044 Olivine	
			045 Pacific Opal	
			046 Vintage Rose	

Available Yarn & Crystal Colours

Crystal Yarn is available in 40 tone-on-tone configurations. Please see the respective product matrix for all available options.

Cotton Versions – 3 mm



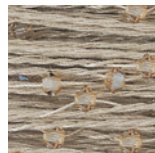
C022 001
White yarn,
Crystal Beads



C035 001 AB
Cream yarn,
Crystal Aurore
Boreale Beads



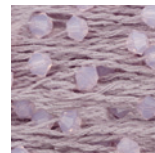
C035 001 620
Cream yarn,
Crystal Cream
Pearls



C036 001 GSHA
Golden Shadow
yarn, Crystal
Golden Shadow
Beads



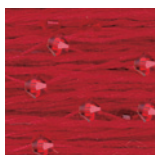
C046 319
Vintage Rose yarn
& Beads



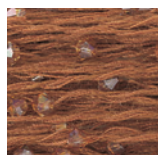
C016 395
Rose Water Opal
yarn & Beads



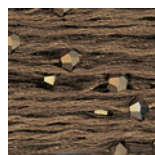
C039 001 352
Powder Rose yarn,
Crystal Powder
Rose Pearls



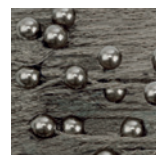
C037 227
Light Siam yarn &
Beads



C033 001 COP
Copper yarn &
Beads



C034 001 DOR2
Dorado yarn,
Crystal Dorado 2x
Beads



C014 001 815
Brown yarn,
Crystal Brown
Pearls



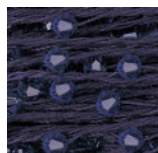
C044 228
Olivine yarn &
Beads



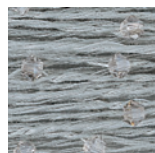
C045 390
Pacific Opal yarn
& Beads



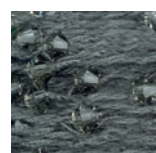
C032 394
Caribbean Blue
Opal yarn & Beads



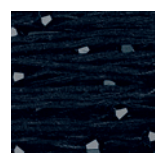
C038 207
Montana yarn &
Beads



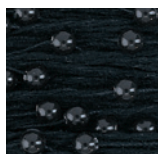
C040 001 SSHA
Silver Shade yarn,
Crystal Silver
Shade Beads



C024 215
Black Diamond
yarn & Beads

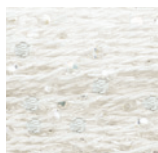


C012 280
Black yarn,
Jet Beads

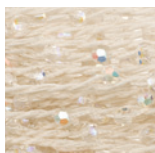


C012 001 335
Black yarn,
Crystal Mystic
Black Pearls

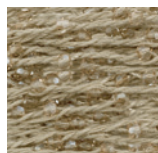
Cotton Versions – 2 mm



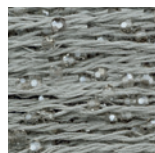
C022 001
White yarn,
Crystal Beads



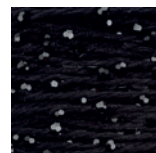
C035 001 AB
Cream yarn,
Crystal Aurore
Boreale Beads



C036 001 GSHA
Golden Shadow
yarn, Crystal
Golden Shadow
Beads



C040 001 SSHA
Silver Shade yarn,
Crystal Silver
Shade Beads



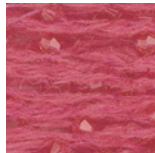
C012 280
Black yarn,
Jet Beads

Crystal Yarn

Cashmere Versions



K022 001
White yarn,
Crystal Beads

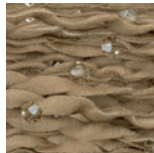


K026 542
Padparadscha
yarn & Beads

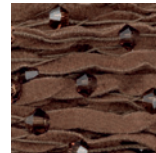


K025 214
Peridot yarn &
Beads

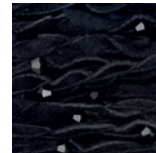
Synthetic Suede Versions



A036 001 GSHA
Golden
Shadow yarn,
Crystal Golden
Shadow Beads

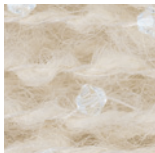


A041 220
Smoked Topaz
yarn & Beads

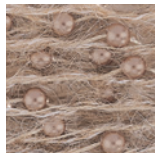


A012 280
Black yarn,
Jet Beads

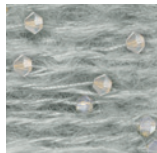
Mohair Versions



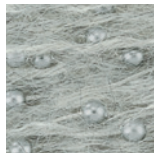
M035 001
Cream yarn,
Crystal Beads



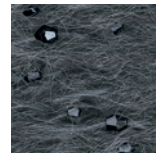
M013 001 295
Bronze yarn,
Crystal Bronze
Pearls



M043 383
Light Grey yarn &
Light Grey Opal
Beads



M043 001 616
Light Grey yarn &
Crystal Light Grey
Pearls

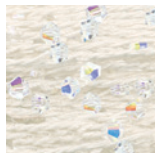


M042 280 HEM
Jet Hematite yarn
& Beads

Polyester Versions



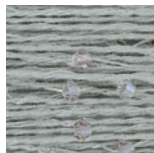
P022 001
White yarn,
Crystal Beads



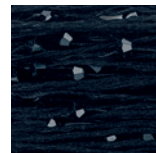
P035 001 AB
Cream yarn,
Crystal Aurore
Boreale Beads



P036 001 GSHA
Golden
Shadow yarn,
Crystal Golden
Shadow Beads



P040 001 SSHA
Silver Shade yarn,
Crystal Silver
Shade Beads

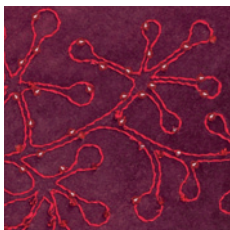


P012 280
Black yarn,
Jet Beads

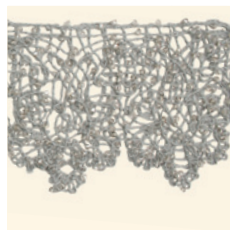
Application Examples

<<<

Crystal Yarn opens up many new application possibilities, particularly in the fields of embroidery and knitting, and is especially suited to the creation of designs with a very exclusive look. Please find herein some examples of the different possible looks of Crystal Yarn.



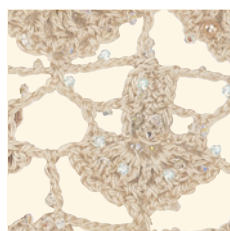
Embroidery



Lace



Hand knitting



Crochet

Classic Colours
Exclusive Colours

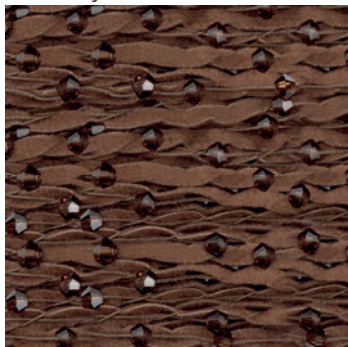
59 000 Cotton Versions*



Colour
Crystal (001)
Crystal AB (001 AB)
Crystal Copper (001 COP)
Crystal Dorado 2x (001 DOR2)
Crystal Golden Shadow (001 GSHA)
Crystal Silver Shade (001 SSHA)
Jet (280)
Black Diamond (215)
Caribbean Blue Opal (394)
Light Siam (227)
Montana (207)
Olivine (228)
Pacific Opal (390)
Rose Water Opal (395)
Vintage Rose (319)

Colour of Yarn	C012 Cotton Black	C016 Cotton Rose Water Opal	C022 Cotton White	C024 Cotton Black Diamond	C032 Cotton Caribbean Blue Opal	C033 Cotton Copper	C034 Cotton Dorado	C035 Cotton Cream	C036 Cotton Golden Shadow	C037 Cotton Light Siam	C038 Cotton Montana	C040 Cotton Silver Shade	C044 Cotton Olivine	C045 Cotton Pacific Opal	C046 Cotton Vintage Rose	Distance	3 cm	8 cm
Crystal (001)			■														■	■
Crystal AB (001 AB)								■									■	■
Crystal Copper (001 COP)						■											■	■
Crystal Dorado 2x (001 DOR2)							■										■	■
Crystal Golden Shadow (001 GSHA)									■								■	■
Crystal Silver Shade (001 SSHA)												■					■	■
Jet (280)	■																■	■
Black Diamond (215)				■													■	■
Caribbean Blue Opal (394)					■												■	■
Light Siam (227)										■							■	■
Montana (207)											■						■	■
Olivine (228)												■					■	■
Pacific Opal (390)													■				■	■
Rose Water Opal (395)		■												■			■	■
Vintage Rose (319)															■		■	■

59 000 Synthetic Suede Versions**



Colour
Crystal Golden Shadow (001 GSHA)
Jet (280)
Smoked Topaz (220)

Colour of Yarn	A012 Synthetic Suede Black	A036 Synthetic Suede Golden Shadow	A041 Synthetic Suede Smoked Topaz	Distance	3 cm
Crystal Golden Shadow (001 GSHA)		■			■
Jet (280)	■				■
Smoked Topaz (220)			■		■

* Available on 50 m & 300 m spool
 ** Available on 25 m & 100 m spool

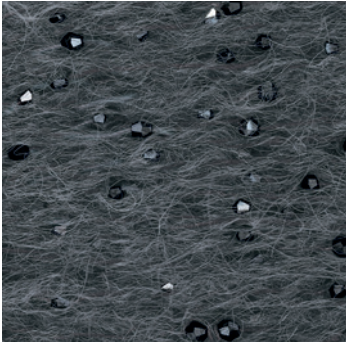
59 000 Cashmere Versions*



Colour of Yarn	Distance
K022 Cashmere White	3 cm
K025 Cashmere Peridot	8 cm
K026 Cashmere Padparadscha	8 cm

Colour
Crystal (001)
Padparadscha (542)
Peridot (214)

59 000 Mohair Versions*



Colour of Yarn	Distance
M042 Mohair Jet Hematite	3 cm
M043 Mohair Light Grey	8 cm

Colour
Jet Hematite (280 HEM)
Light Grey Opal (383)

59 000 Polyester Versions*



Colour of Yarn	Distance
P012 Polyester Black	3 cm
P022 Polyester White	8 cm
P035 Polyester Cream	8 cm
P036 Polyester Golden Shadow	8 cm
P040 Polyester Silver Shade	8 cm

Colour
Crystal (001)
Crystal AB (001 AB)
Crystal Golden Shadow (001 GSHA)
Crystal Silver Shade (001 SSHA)
Jet (280)

* Available on 50 m & 300 m spool

Crystal Yarn

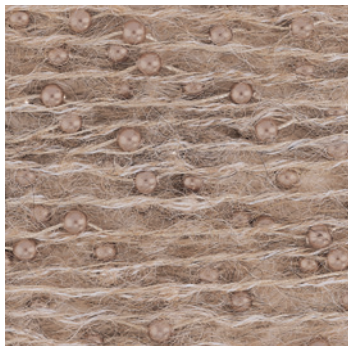
59 010*



Colour	
	Crystal (001)

Colour of Yarn	
	M035 Mohair Cream
Distance	
	3 cm
	8 cm

59 100**



Colour	
	Crystal Bronze Pearl (001 295)
	Crystal Brown Pearl (001 815)
	Crystal Cream Pearl (001 620)
	Crystal Light Grey Pearl (001 616)
	Crystal Mystic Black Pearl (001 335)
	Crystal Powder Rose Pearl (001 352)

Colour of Yarn	
	C012 Cotton Black
	C014 Cotton Brown
	C035 Cotton Cream
	C039 Cotton Powder Rose
	M013 Mohair Bronze
	M043 Mohair Light Grey
Distance	
	3 cm
	8 cm

59 200***



Colour	
	Crystal (001)
	Crystal AB (001 AB)
	Crystal Golden Shadow (001 GSHA)
	Crystal Silver Shade (001 SSHA)
	Jet (280)

Colour of Yarn	
	C022 Cotton White
	C035 Cotton Cream
	C036 Cotton Golden Shadow
	C040 Cotton Silver Shade
	C012 Cotton Black
Distance	
	1 cm

* Available on 50 m spool
 ** Available on 50 m & 300 m spool
 *** Available on 25 m & 100 m spool

Product Composition & Technical Data

<<<

Type of Yarn	Cotton	Cashmere	Mohair	Polyester	Synthetic Suede
59000, 59100, 59200	4 ply 100% Cotton	2 ply 100% Cashmere 2 ply 100% Cotton	2 ply 66% Mohair 30% Polyamide 4% Wool 2 ply 100% Cotton	4 ply 100% Polyester	2 ply 100% Cotton 1 ply 55% Viscose 45% Acrylic
59010			2 ply 64% Wool 34% Mohair 2% Nylon 2 ply 100% Cotton		

Number of Beads/Crystal Pearls per m

3 cm distance	~ 34 pcs	~ 34 pcs	~ 34 pcs	~ 34 pcs	~ 34 pcs
8 cm distance	~ 14 pcs	~ 14 pcs	~ 14 pcs	~ 14 pcs	
1 cm distance	~ 125 pcs				

Indicative Fastness

Washing at 30°C	4	3/4	4	4	4/5
Light	3/4	4 (2 for white yarn)	4	4	4
Dry cleaning	4/5	3/4	4/5	4	

Average Weight (m/kg)

59000/03	900	850	850	750	500
/08	1,550	1,550	1,450	1,400	
59010/03			385		
/08			590		
59100/03	900		850		
/08	1,550		1,450		
59200/01	590				

Hints and Tips

<<<

- The Beads/Crystal Pearls may slip off at the beginning and the end of the Crystal Yarn.
- Some Beads/Crystal Pearls may unavoidably be damaged during the embroidery process.
- Slight variations in the colour of the yarn may occur among different dyeing lots. Those lie within a range of tolerance.
- One cotton version (colour cream) may be dyed, however, this definitely must be tested before production!
- Claims may be lodged for replacements up to 50 m. These claims are not valid for finished products.

Quality Standards

<<<

Crystal Yarn complies with Swarovski's high quality standards that allow our customers to gain a market edge. This guaranteed quality corresponds to your high design requirements and contributes to the exclusivity of your products. Crystal Yarn is resistant to: light, seawater, perspiration, perfume, perchloroethylene, weak acid and alkaline solutions. The product is certified with Oeko-Tex Standard 100. It could appear that there are knots in the Crystal Yarn.

