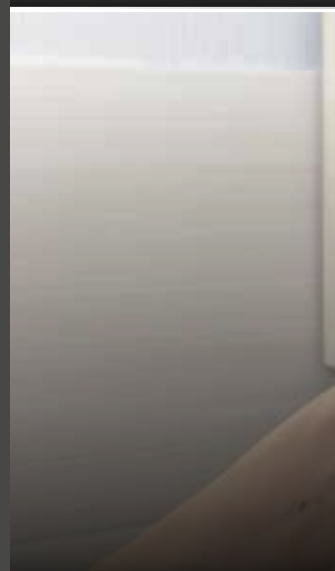
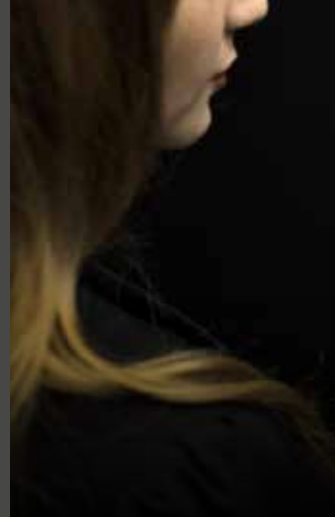


WIRELESS TECHNOLOGY
FOR SMART FURNITURE
MADE IN ITALY

NEXTA
T E C H

FURNITURE LIGHTING CONTROL

Smart solutions
100% made in Italy





RADIOTRANSMITTERS
AND SENSORS



RGB/W COLORED
LIGHTS CONTROL



DIMMING AND
TUNNABLE
WHITE



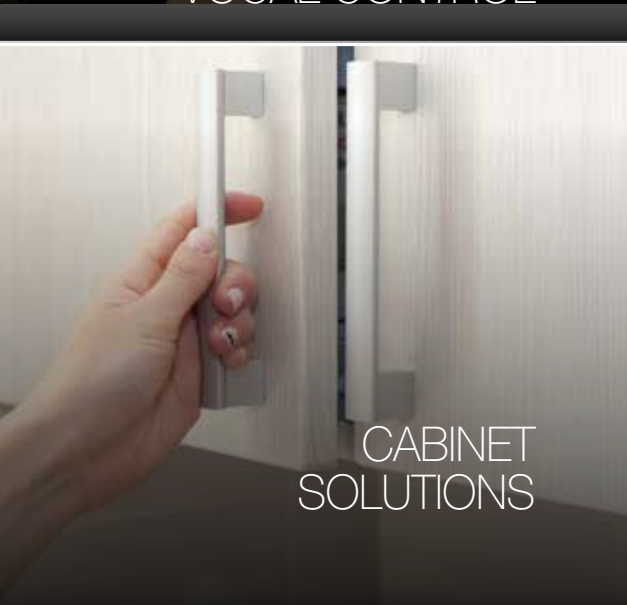
TOUCH
DESIGN



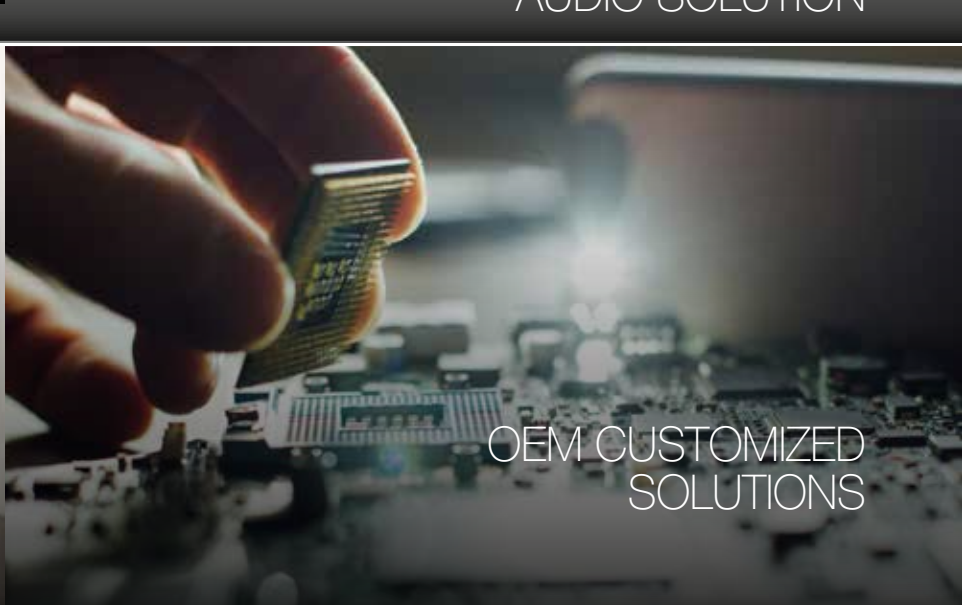
SMART AND
VOCAL CONTROL



INTEGRATED
AUDIO SOLUTION

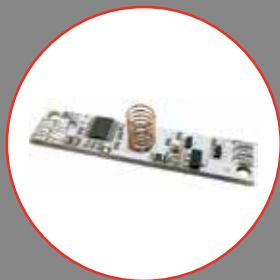


CABINET
SOLUTIONS



OEM CUSTOMIZED
SOLUTIONS

FLEXIBLE SOLUTION FOR ANY TECHNICAL REQUIREMENT



**CONTROL UNITS FOR
LED PROFILE INSTALLATION**
PAGE 34



**CONTROL UNITS FOR
LED CONTROL**
PAGE 26

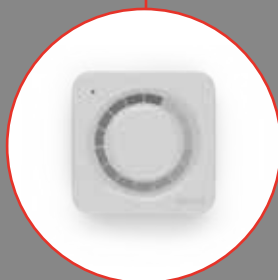


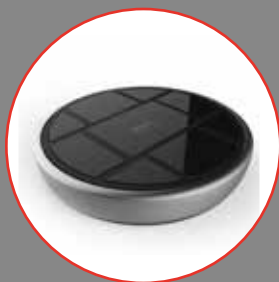
RECESSED REMOTE CONTROL
PAGE 10



**MINIATURISED
WALL-MOUNTED
TRANSMITTER**
PAGE 8

**CONTROL UNITS FOR
MUSIC CONTROL**
PAGE 32

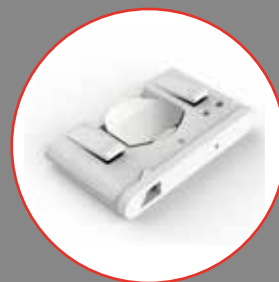




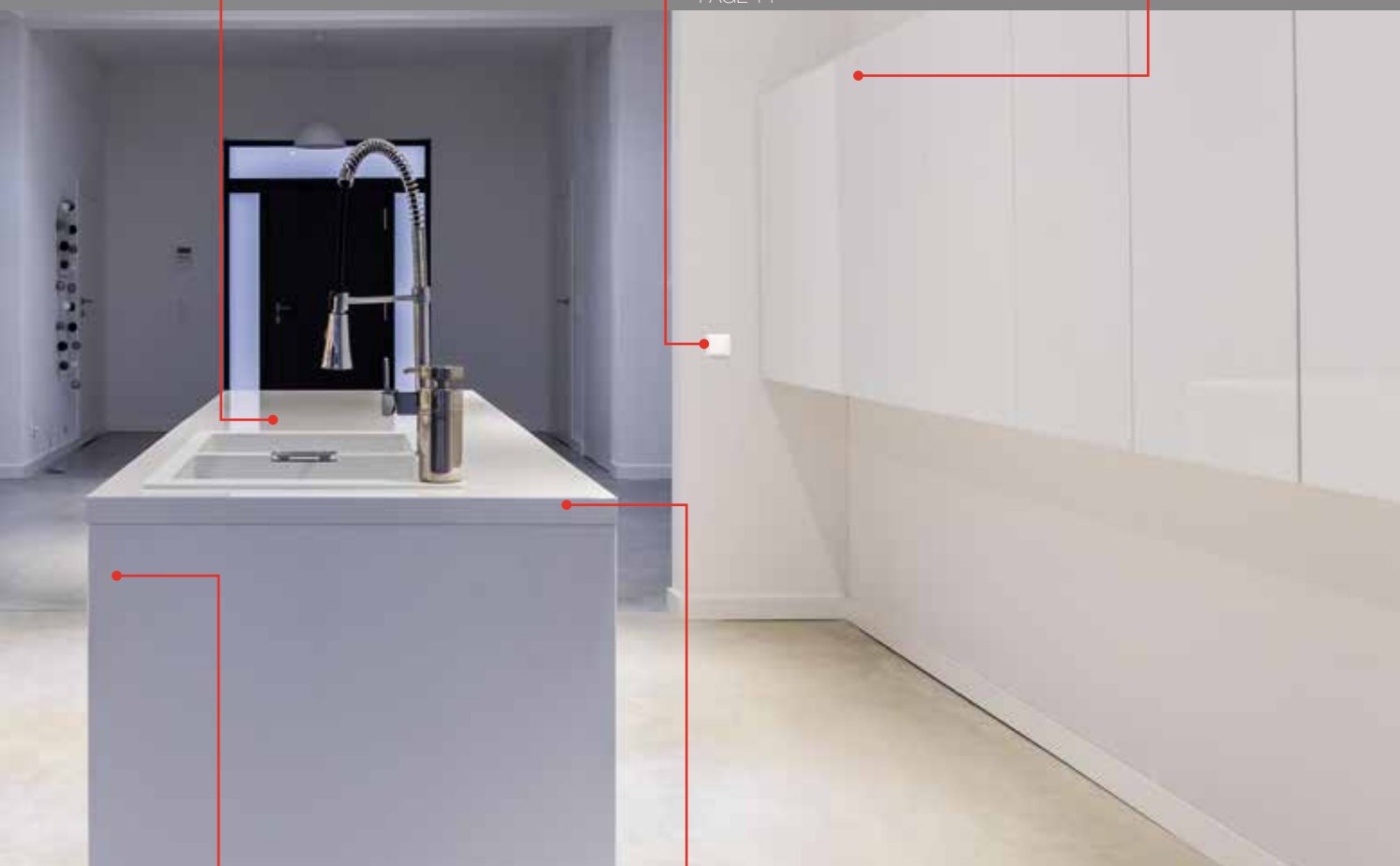
**PORTABLE
TRANSMITTER**
PAGE 12



**RECESSED TRANSMITTER
FOR TRANSFORM
STANDARD WIRED
PUSH BUTTON IN RADIO
CONTROL**
PAGE 14



**SENSOR FOR
MOBILE DOOR**
PAGE 18



**MINIATURISED
WALL-MOUNTED
MOVEMENT SENSORS**
PAGE 16

**SMARTPHONE AND
VOICE CONTROL**
PAGE 26



HOW THE SYSTEM WORKS

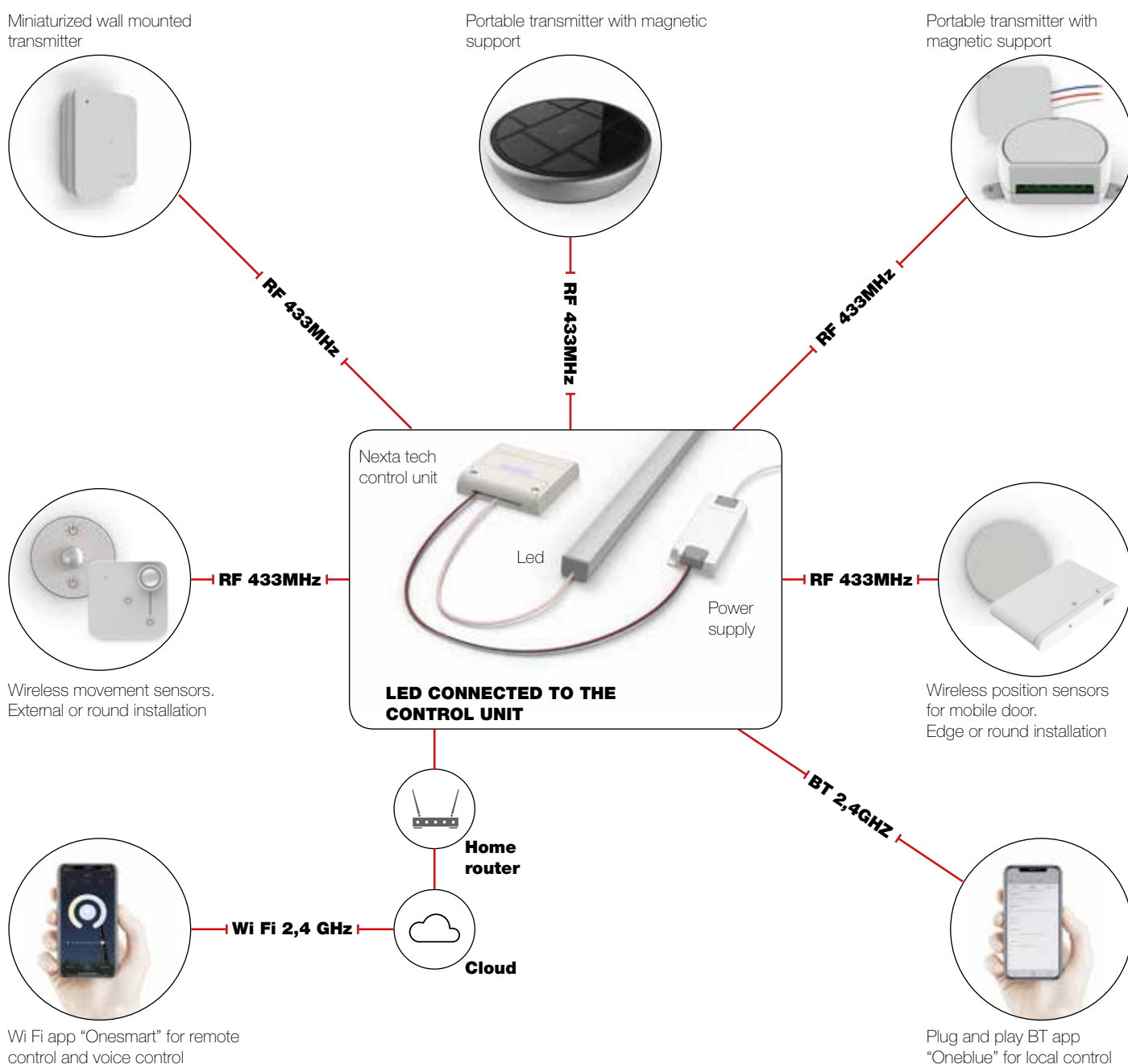
OPERATING PRINCIPLE

The Nexta Tech control unit is installed between the power supply and the LED line. It can control different types of LEDs (single color, RGB, RGBW, CCT) and communicate by wireless with transmitters, sensors, and smartphone.

SYSTEM ADVANTAGES

- . Drastic reduction of cabling and wires
- . Precise management of intensity, temperature and color of the lights
- . Comfort through the control with cutting edge interfaces and smart devices
- . Flexible installation and positioning of the sensors thanks to the wireless connection.
- . Compatible with Smart Assistants Alexa Amazon and Google home.

TYPICAL SYSTEM AND TYPE OF COMMUNICATION



PRODUCTS RANGE

LIGHT CONTROL UNIT Control unit for single color, CCT and RGBW led

PLANO, Page 26



Control unit for 12 to 24Vdc constant voltage LEDs.



EXTRASONIC Surface audio system

SONIC100, Page 32



Sound amplification system.

LINEAR Wired control unit for single color and CCT led, profile installation

LINEAR DIM, Page 34



Wired control unit for 12 to 24Vdc constant voltage LEDs.

RADIO TRANSMITTERS Portable, wall mounted and recessed radio transmitters

TOUCH, Page 8



Miniaturized wall-mounted radio control, rolling code 433.92 MHz.

TOUCH, Page 12



Portable radio control, rolling code 433.92 MHz.

MCU-TX4 / TOUCH-TX2 Page 14



Recessed installation radio control, rolling code 433.92 MHz for wired button.

RADIO MOTION SENSORS Wireless movement sensors

TOUCH-1SP, Page 16



Wireless motion sensor, rolling code 433.92 MHz.

ROUND-1SP, Page 17



Wireless motion sensor, rolling code 433.92 MHz.

RADIO POSITION SENSOR Wireless position sensors for mobile door

SENSA, Page 20



Sensor for mobile door. Version with edge-mounted installation.

SENSA, Page 25



Sensor for mobile door. Version with installation on a 35mm diameter hole.

Radio control

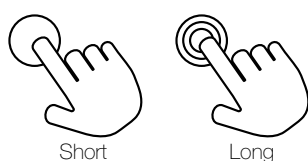
TOUCH

Touch control

Miniaturised innovative design with numerous command versions for flexible and convenient wireless installations. Its compact size means it can easily be attached to a wall, piece of furniture, window or shelf. The ISM (industrial, scientific and medical) radio frequency band guarantees a long range, even through walls and ceilings.

Touch push

Touch buttons with capacitive touch technology. A brief or prolonged press are both recognised for different functions such as:
press and release = On/Off, press and hold = Dimmer.



Push surround

Central touch button and capacitive touch surround to send commands by moving your finger in a rotary motion, ideal for colour and intensity dimmer functions.



TECHNICAL DATA

Power supply	CR 2450 battery
Battery life	About 3 years
Encoding	Rolling code
Radio frequency	433.92 MHz ISM
Range	100 m (40m inside a building)
Dimensions	40 mm x 40 mm h 10 mm



TOUCH - AVAILABLE VERSION

ONE LINE OF LIGHT, DIMMER FUNCTION

ON-OFF, DIMMER UP/DOWN, DIMMER SURROUND



TOUCH-1G

- Radio control RC 433.92 MHz, 1 channel.
- Functions:
Press and release: On/Off
Press and hold: Dimmer
Change color / CCT



TOUCH-1DIM

- Radio control RC 433.92 MHz, 1 channel.
- Functions:
- Surround: change intensity (gradual or in steps)
- Middle key: On/Off (press and release) and Off (press and hold)

ONE LINE OF LIGHT, RGB/W AND CCT CONTROL

ON-OFF, DIMMER, SELECT COLOUR, DYNAMIC EFFECT



TOUCH-1RGBW

- Radio control RC 433.92 MHz, 1 channel.
- Functions:
- Surround: change colour (gradual or in steps) + White
- Middle key: On/Off and dimmer



TOUCH-CFU

- Radio control RC 433.92 MHz, 1 channel.
- Functions: play/stop cycle, change cycle speed, change cycle effect, save colour.
To be used with con TOUCH-1RGBW



TOUCH-1C

- Radio control RC 433.92 MHz, 1 channel.
- Functions:
On/Off, Dimmer, play/stop cycle, change colour + White



TOUCH-1CCT

- Radio control RC 433.92 MHz, 1 channel.
- Functions:
- Surround: change temperature
- Middle key: On/Off and dimmer

MULTICHANNEL RADIO CONTROL

MANAGE MORE LINE OF LIGHT WITH THE SAME TRANSMITTER



TOUCH-2G

- Radio control RC 433.92 MHz, 2 channels.
- Functions:
Press and release: On/Off
With light on press and hold: Dimmer
With light off press and hold: Change color / CCT



TOUCH-4G

- Radio control RC 433.92 MHz, 4 channels.
- Functions:
Press and release: On/Off
With light on press and hold: Dimmer
With light off press and hold: Change color / CCT



TOUCH-4DIM

- Radio control RC 433.92 MHz, 4 channels.
- Functions:
- Surround: select channel
- Middle key: On-Off (press and release), Dimmer (press and hold)



TOUCH-3C

- Radio control RC 433.92 MHz, 3 channels.
- Functions:
- Surround: select channel and change colour
- Middle key: On-Off (press and release), Dimmer (press and hold)

Wireless control

ROUND

Touch control

Round is the recessed radio remote control with capacitive touch technology, ideal for installation on shelves, bookcases and under cupboards. SIMPLY make a hole with a diameter of 35mm and a depth of 13mm to transform your furniture into an innovative control system.



TECHNICAL DATA

Power supply	CR 2450 battery
Battery life	About 3 years
Encoding	Rolling code
Radio frequency	433.92 MHz ISM
Range	40m (20m inside a building)
External dimensions	38 mm x h 14 mm
Hole dimensions	35 mm x h 14 mm



ROUND - AVAILABLE VERSION



SIDE VIEW

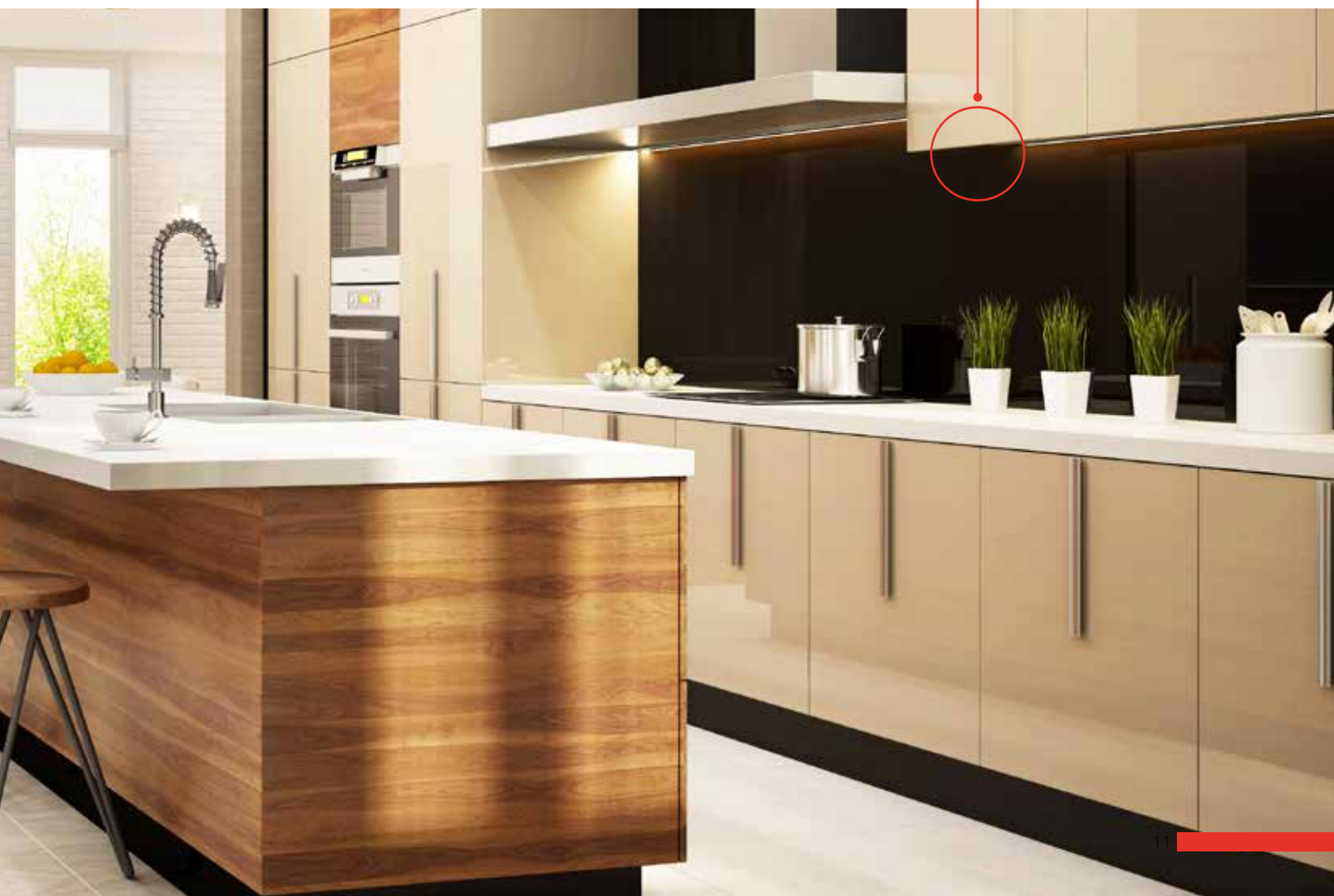
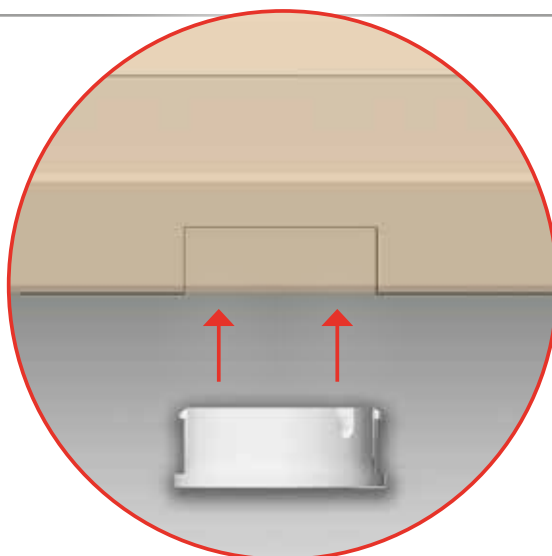
AVAILABLE VERSIONS

ROUND-1G

Radio control, rolling code 433.92 MHz.

Function of button:

- Press and release: On/Off
- With light on press and hold: Dimmer
- With light off press and hold: Change color / CC



Radio control

HOBLO 80

Design and functionality for any application

Multifunctional radio control for up to 30 electrical devices, controlled singly or in a group.

Available in nine versions for a wide range of uses, with keys that are pre-set or can be selected during programming on the electronic control unit, display with 7 segments and 4 LEDs for selecting channels and groups.

The models feature different screen-printing on the front screen and a different use of LEDs and displays (see summary table).

Hoblo 80 is a very robust design product and is easy to use thanks to its aluminium alloy structure, the shock-proof polycarbonate plastic parts, and the magnetic wall-mounting support.



TECHNICAL DATA

Power supply	CR 2450 battery
Battery life	About 2 years
Code	Rolling code
Radio frequency	433.92 MHz ISM
Range	80 m in free field 30m inside a building
Dimensions	Diameter 80 mm x h 13 mm



Hoblo 80 - Available version

LIGHTS DIMMER

LIGHTS DIMMER ON-OFF, 30-60-100%, DIMMER UP/DOWN



HB80-1DIM

- Radio control, rolling code 433.92 MHz, 1 channel, dimmer functions.
- Functions:
 - 20%
 - 50%
 - 100%,
 - Dimmer Up
 - On/Off (press and release)
 - Off (press and hold)
 - Dimmer Down
 - LED = Radio signal



HB80-4DIM

- Remote control rolling code 433.92 MHz 4 channels +All. command, dimmer functions
- Functions:
 - 20%
 - 50%
 - 100%
 - On/Off (press and release)
 - Off (press and hold)
 - Select channel (press and release)
 - All (press and hold)
 - Dimmer Up/Down
 - LED = Channel selection



HB80-30D

- Radio control, rolling code 433.92 MHz, 30 channels and 4 groups, Up-Down-Stop
- Functions:
 - Channel +
 - Group selection
 - Up
 - Down
 - On/Off (press and release),
 - Off (press and hold) - pulse - stop
- Channel -
- DISPLAY = Selection of channels 1-30
- LED = Selection of Groups A-B-C-D

RGB/W AND CCT CONTROL

ON-OFF, DIMMER UP/DOWN, SELECT COLOUR, DYNAMIC EFFECTS



HB80-1C

- Radio control, rolling code 433.92 MHz, 1 channel. Colour and dimmer functions
- Functions:
 - Play/Stop Cycle (press and release)
 - Save (press and hold)
 - Change colour in steps (press and release)
 - Change colour gradually (press and hold)
 - Change cycle speed (press and release)
 - Change cycle effect (press and hold)
 - Dimmer Up
 - On/Off (press and release)
 - Off (press and hold)
 - Dimmer Down
 - LED = Radio signal



HB80-4C

- Radio control, rolling code 433.92MHz, 4 channels + All command
- Colour and dimmer functions
- Functions:
 - Play/Stop Cycle (press and release),
 - Save (press and hold)
 - Change colour in steps (press and release)
 - Change colour gradually (press and hold)
 - Change cycle speed (press and release)
 - Change cycle effect (press and hold)
 - On/Off (press and release)
 - Off (press and hold)
 - Select channel (press and release)
 - All (press and hold)
 - Dimmer Up/Down
 - LED = Select channel

Radio control

MCU-TX4

It transforms 4 wired buttons into radio controls: fast and reliable wireless connection

Recessed remote control, ideal for transforming wired wall buttons into radio controls. The innovative dual power supply, either from the mains or a battery, means it can be installed on standard push button or on pre-existing sensors. The ISM (industrial, scientific and medical) radio frequency band guarantees a long range, even through walls and ceilings.

Function of each button:

- Press and release: On/Off
- With light on press and hold: Dimmer
- With light off press and hold: Change color / CCT

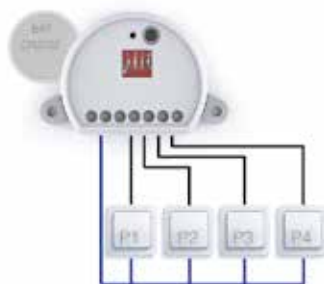


CONNECTIONS

120-240 MAINS
POWER SUPPLY



CR2032 BATTERY
POWER SUPPLY



AVAILABLE VERSIONS

MCU-TX4

Radio control, rolling code 433.92 MHz, 4 channels with inputs for wall buttons. Possibility of dual power-supply: 120-240 Vac mains or CR 2032 battery.

TECHNICAL DATA

Power supply	Mains 120-240 Vac or CR 2032 battery
Battery life	About 4 years
Radio frequency	433.92 MHz ISM
Range	120 m in free field (50 m inside)
Protection rating	IP20
Operating temperature	-20 +55 °C
Dimensions	52x42x21 mm

Radio control

TOUCH-TX2

It transforms wired buttons into radio controls: fast and reliable wireless connection

Recessed remote control, ideal for transforming wired wall buttons into radio controls.

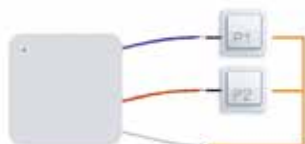
The ISM (industrial, scientific and medical) radio frequency band guarantees a long range, even through walls and ceilings.

Function of each button:

- Press and release: On/Off
- With light on press and hold: Dimmer
- With light off press and hold: Change color / CC



CONNECTIONS



AVAILABLE VERSIONS

TOUCH-TX2

Recessed radio control, rolling code 433.92 MHz, 2 programmable channels. CR 2450 battery power supply

TECHNICAL DATA

Power supply	CR2450 battery
Battery life	About 7 years
Radio frequency	433.92 MHz ISM
Range	120 m in free field (50 m inside)
Protection rating	IP20
Operating temperature	-20 +55 °C
Dimensions	40x40x10 mm



Wireless control

TOUCH 1SP

Touch control

Wireless motion sensor with settable detection distance and light threshold. Radio control or sensor functions can be activated using the touch keys: sensor activation/deactivation On/Off (press and release) and dimmer (press and hold). Compact size 40x40x10mm, ideal for installations on desks and fitted wardrobes.



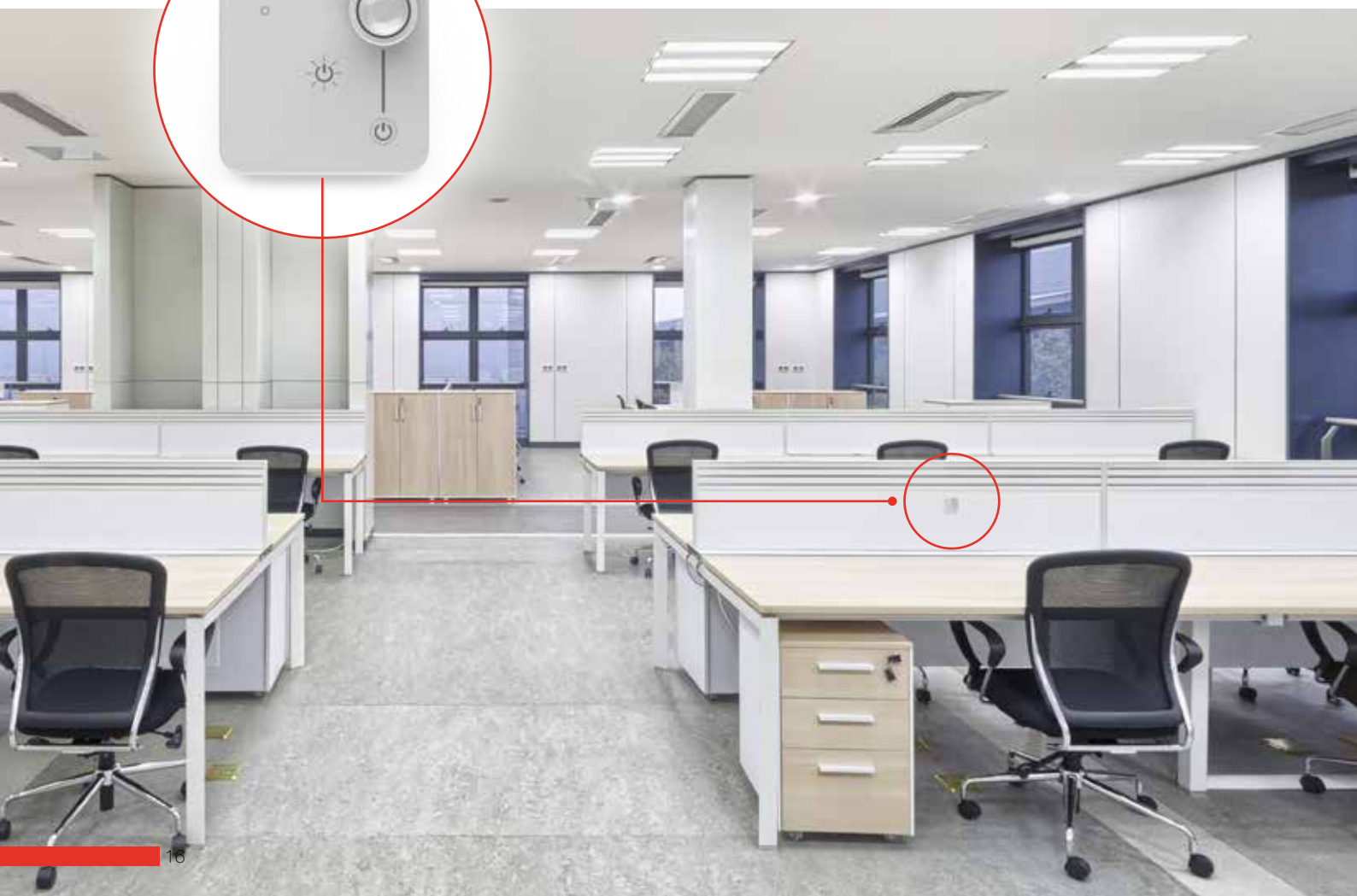
AVAILABLE VERSIONS

TOUCH-1SP

Wireless motion sensor, rolling code 433.92 MHz, with built-in light sensor. Dual function: sensor/radio control. CR2450 battery.

TECHNICAL DATA

Power supply	CR 2450 battery
Battery life	About 3 years
Encoding	Rolling code
Radio frequency	433.92 MHz ISM
Range	100 m (40m inside a building)
Detection distance	settable from 30 cm to 6 m
Fade on time	settable from 1 min to 4 hours
Dimensions	40 mm x 40 mm h 10 mm



Wireless control

ROUND-1SP

Touch control

Recessed wireless motion sensor with settable detection distance and light threshold, ideal for installation on cabinets and units. Sensor or radio control operation.



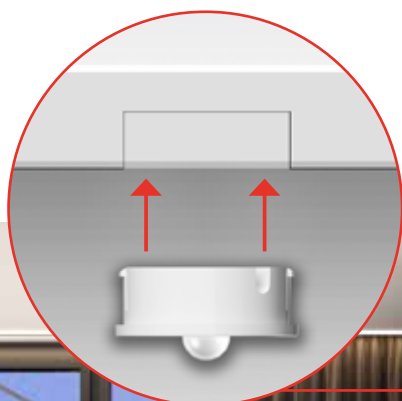
AVAILABLE VERSIONS

ROUND-1SP

Wireless motion sensor, rolling code 433.92 MHz, recessed with built-in light sensor. CR2450 battery.

TECHNICAL DATA

Power supply	CR 2450 battery
Battery life	About 3 years
Encoding	Rolling code
Radio frequency	433.92 MHz ISM
Range	40 m (20m inside a building)
External dimensions	38 mm x h 12 mm
Hole dimensions	35 mm x h 12 mm



Wireless control

SENSA®

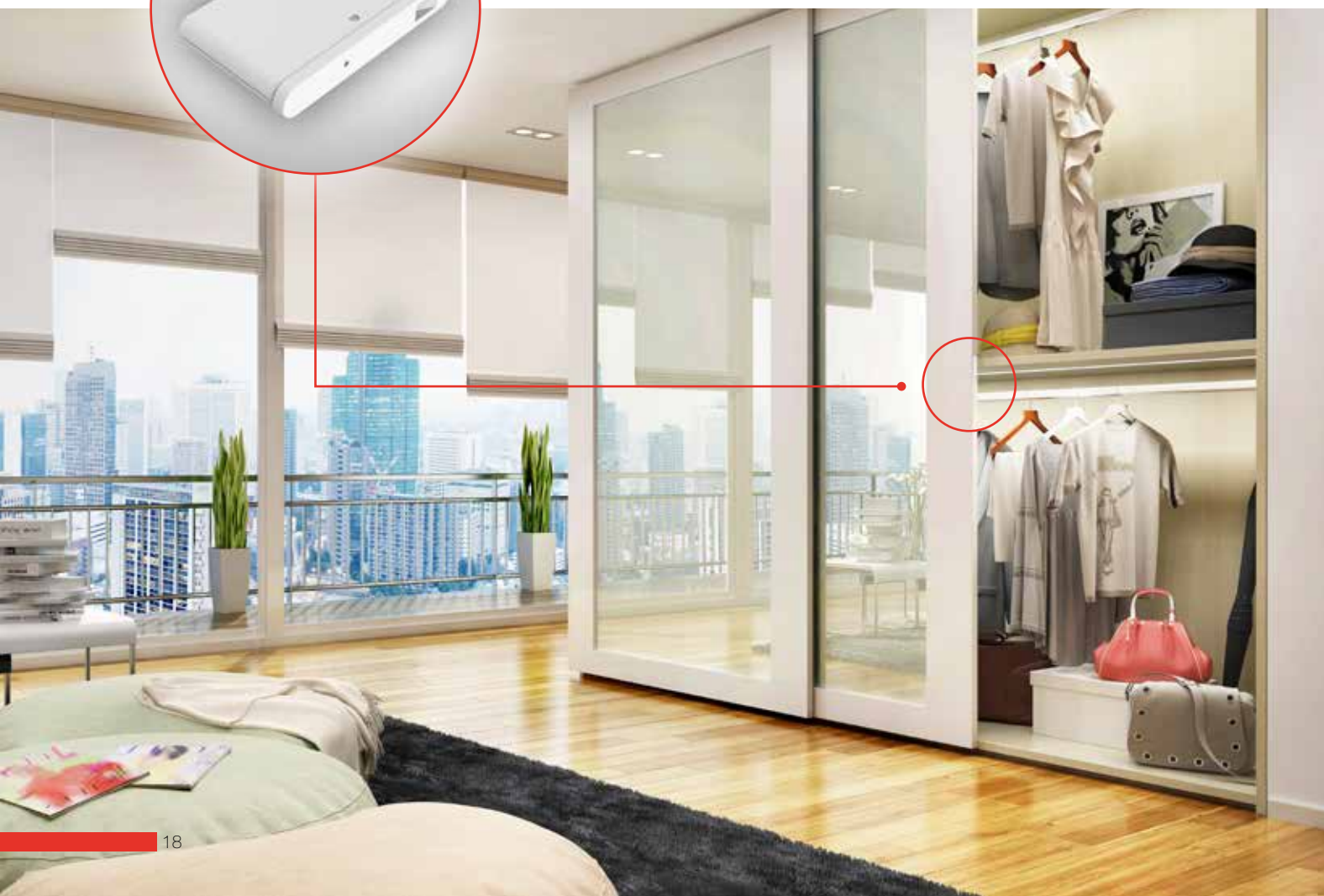
The evolution of the furniture sensor

Sensa is the evolution of a sensor designed for furniture. Recognises the movement and position of the door, switches the light on and off in wireless mode. The radio frequency is ISM (industrial, scientific and medical) and the rolling code guarantees safe transmission with no disturbances.



TECHNICAL DATA

Power supply	CR 2450 battery
Battery life	4.5 years with 30 activations per day
Code	Rolling code
Radio frequency	433.92 MHz ISM
Range	50 m (20m inside a building)





01- HINGED DOOR



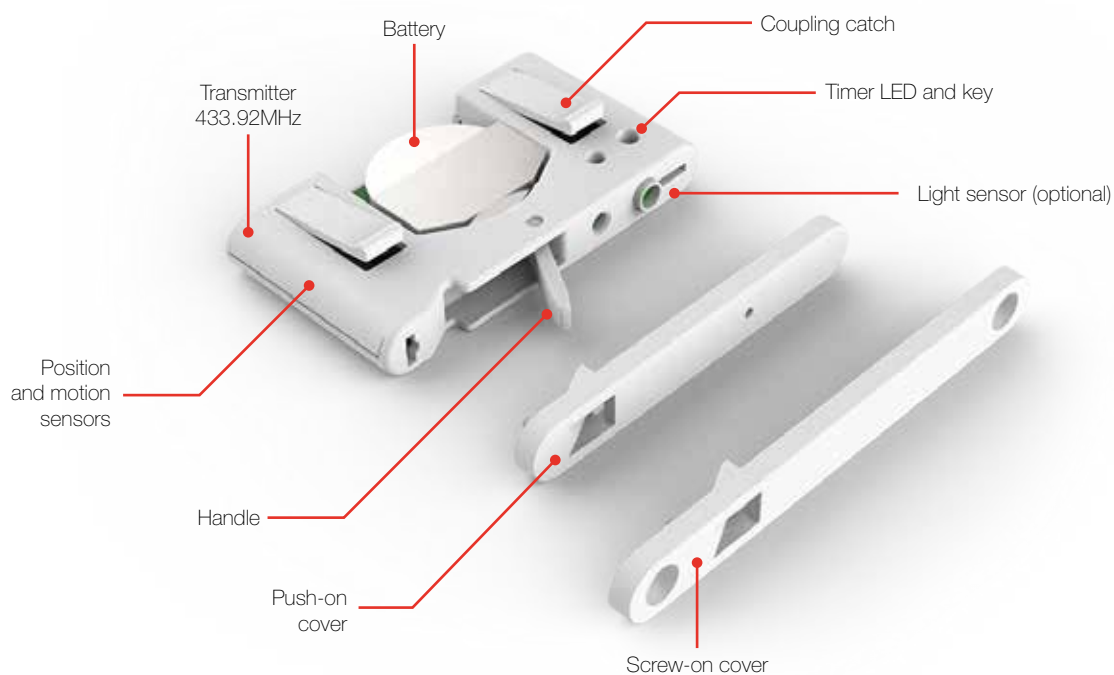
02 - SLIDING DOOR



03- TILTING DOOR



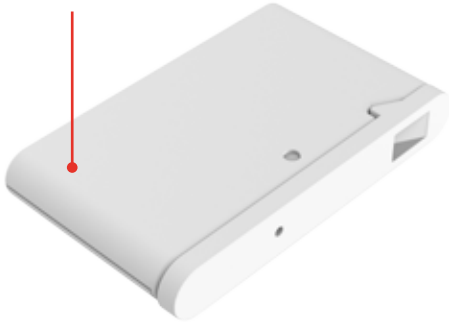
04 - DRAWER UNIT



Wireless control

SENSA®

Motion sensor



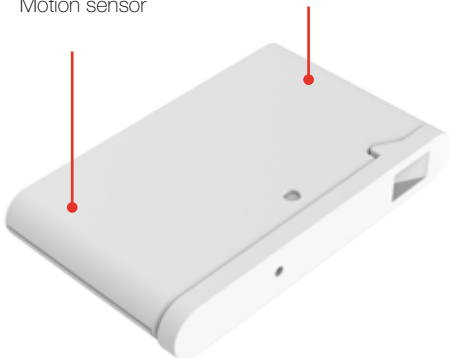
Sensa T Timed On

Sensa T allows timed light activation. The timer count starts each time the user moves the door. Can be installed in any type of hinged door, tilting door, drawer and light sliding doors.

■ Code: **SENSA-T**

Motion sensor

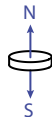
Magnetic sensor



Sensa M Timed On + Magnetic Off

Sensa M allows the light to be switched on for a set time, and switched off during closing, with a magnetic contact installed on the fixed part of the compartment. The timer count starts each time the user moves the door. Can be installed in any type of mobile door or drawer on a unit or piece of furniture. Recommended for heavy and/or dampened sliding doors.

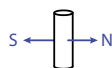
■ Code: **SENSA-M**



Magnet with axial load

Code: **MAG153A**
Description: Magnet with axial load
Diameter 15 mm,
height 3 mm

Code: **MAG225A**
Description: Magnet with axial load
Diameter 22 mm,
height 5 mm

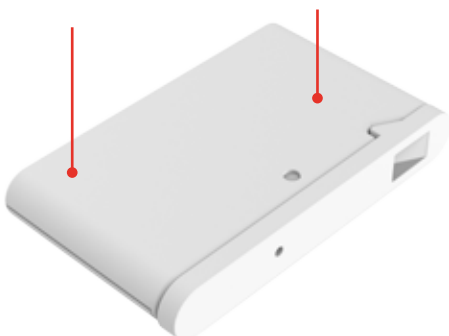


Magnet with diametric load

Code: **MAG1030D**
Description: Magnet with diametric load
Diameter 10 mm,
height 30 mm

Motion sensor

Position sensor

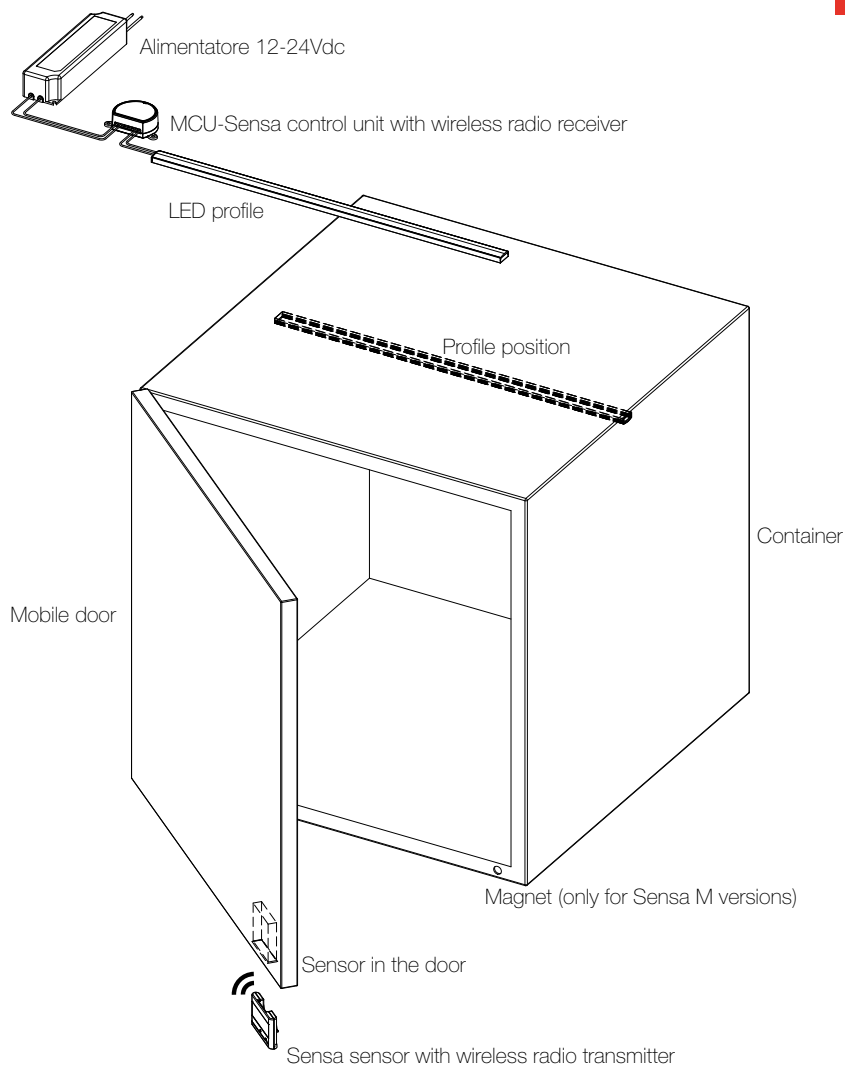


Sensa P Timed On + Position Off

Sensa P allows the light to be switched on for a set time, and to be switched off as the position of the door is recognised. The timer count starts each time the user moves the door. Can be installed on hinged doors or tilting doors.

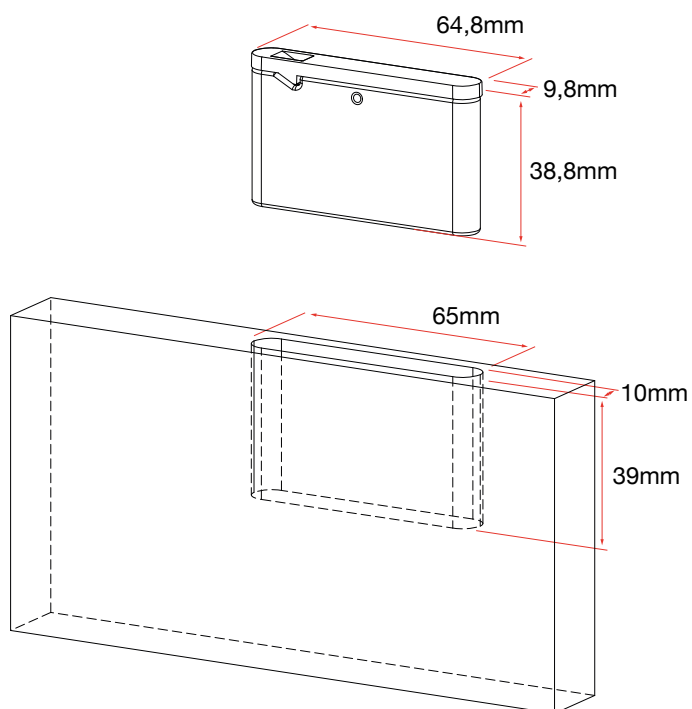
■ Code: **SENSA-P**

Example set-up

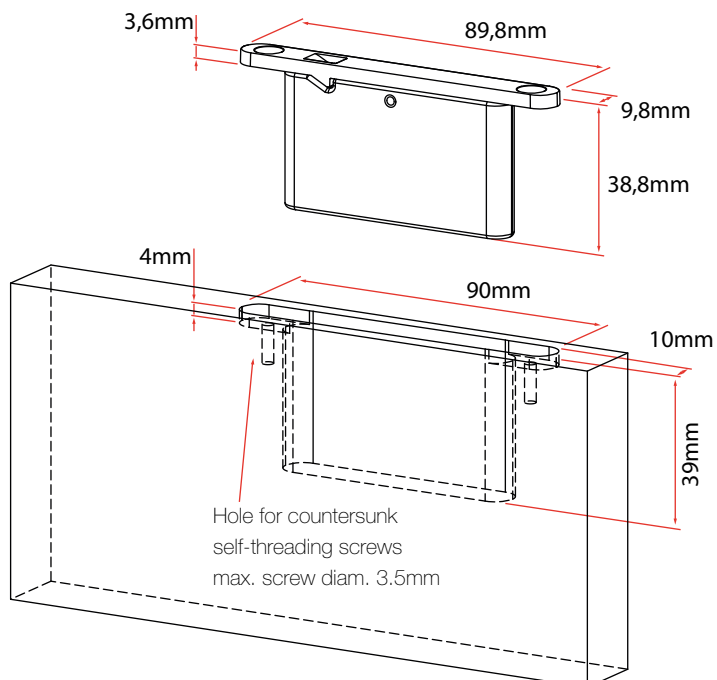


Dimensions

SENSOR DIMENSIONS AND WORK ON DOOR VERSION WITH PUSH-ON COVER



SENSOR DIMENSIONS AND WORK ON DOOR VERSION WITH SCREW-ON COVER

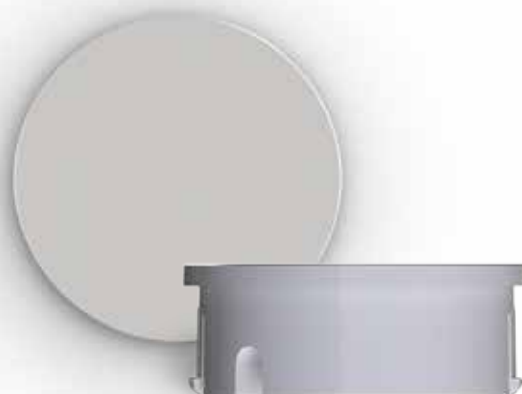


Wireless control

SENSA®

The evolution of the furniture sensor

Sensa is the evolution of a sensor designed for furniture. Recognises the movement and position of the door, switches the light on and off in wireless mode. The radio frequency is ISM (industrial, scientific and medical) and the rolling code guarantees safe transmission with no disturbances.



AVAILABLE VERSIONS

SENSA 35RT

Sensa-35RT allows timed light activation. The timer count starts each time the user moves the door. Can be installed in any type of hinged door, tilting door, drawer and light sliding doors. Preparation hole - diameter 35 mm, min h 12 mm.

SENSA 35RM

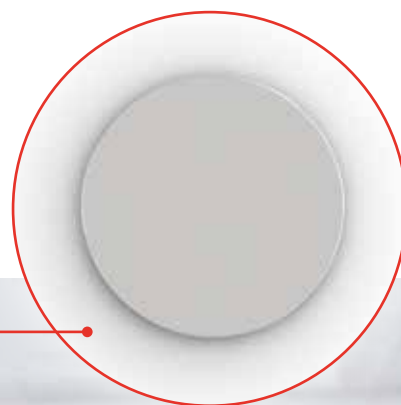
Sensa-35RM allows the light to be switched on for a set time, and to be switched off during closing, with a magnetic contact installed on the fixed part of the compartment. The timer count starts each time the user moves the door. Can be installed in any type of mobile door or drawer on a unit or piece of furniture. Recommended for heavy and/or dampened sliding doors. Preparation hole - diameter 35 mm, min h 12 mm.

SENSA 35RP

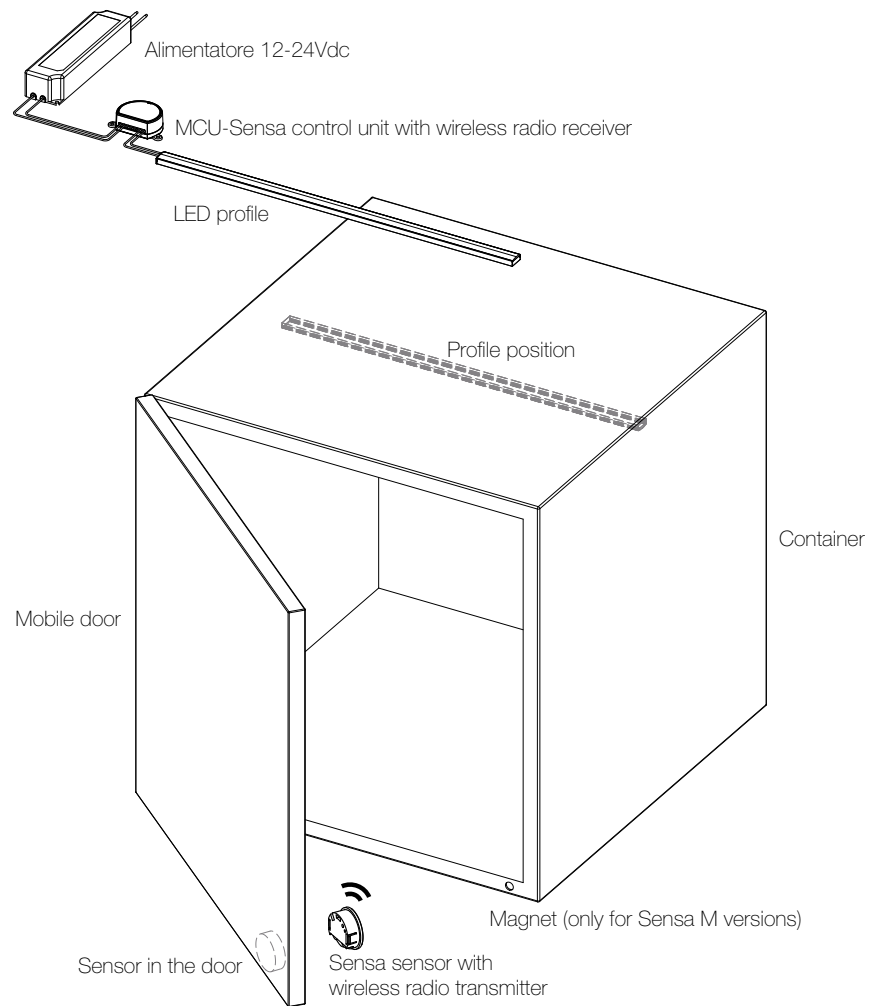
Sensa-35RP allows the light to be switched on for a set time, and to be switched off as the position of the door is recognised. The timer count starts each time the user moves the door. Can be installed on hinged doors or tilting doors. Preparation hole - diameter 35 mm, min h 12 mm.

TECHNICAL DATA

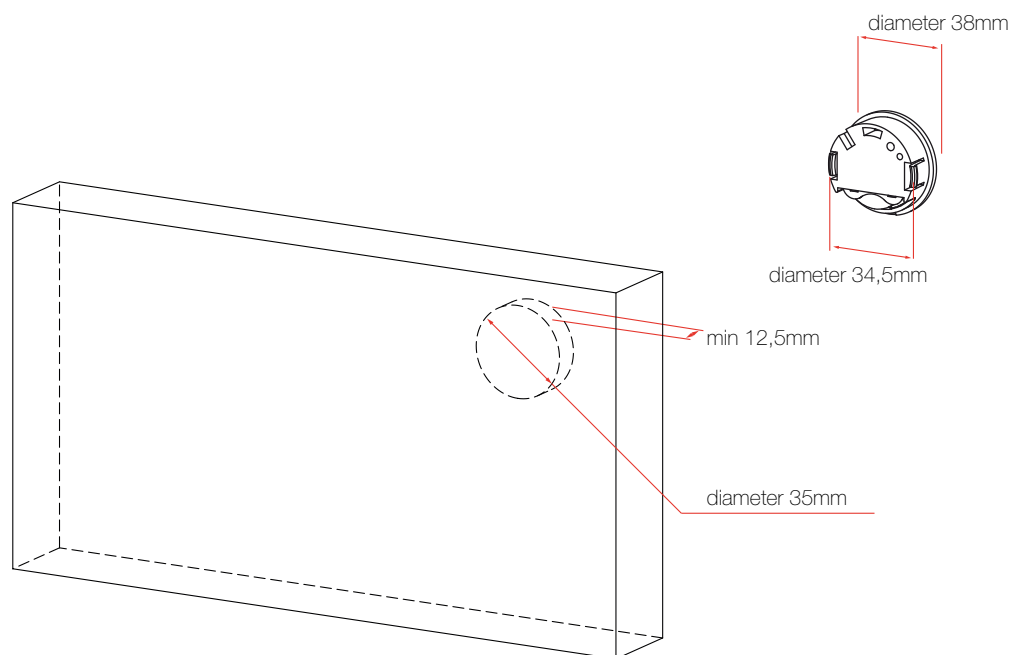
Power supply	CR 2450 battery
Battery life	4.5 years with 30 activations per day
Code	Rolling code
Radio frequency	433.92 MHz ISM
Range	50 m (20m inside a building)



Example set-up



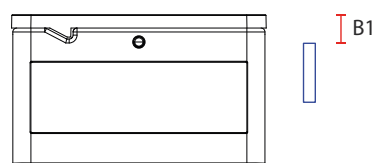
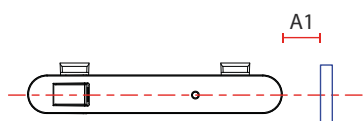
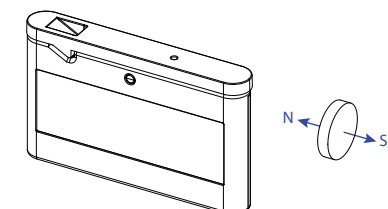
Dimensions



Applications with magnet - Recommended distances

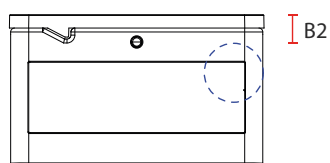
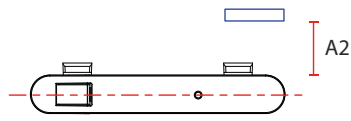
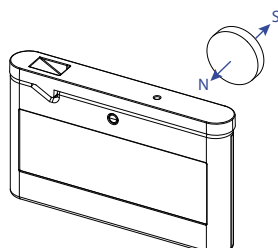
APPLICATIONS WITH AXIAL MAGNET (Sensa M + MAG153A or MAG225A)

POSIZIONE A1



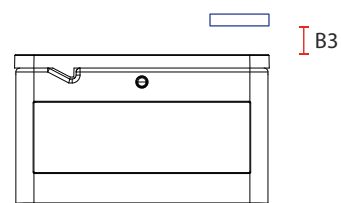
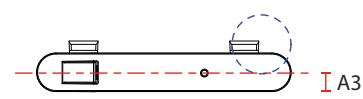
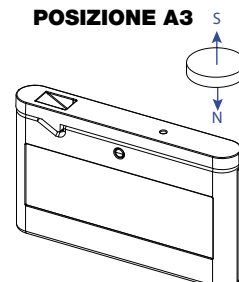
- A1 (with MAG153A): max 15mm
- A1 (with MAG225A): max 30mm
- B1: 5mm

POSIZIONE A2



- A2 (with MAG153A): max 15mm
- A2 (with MAG225A): max 30mm
- B2: 5mm

POSIZIONE A3

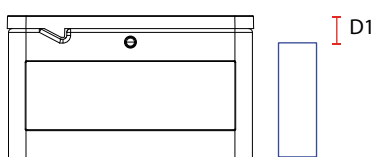
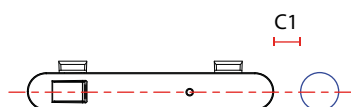
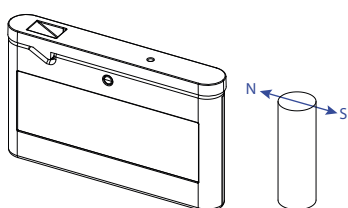


- A3: max 5mm
- B3 (with MAG153A): max 15mm
- B3 (with MAG225A): max 30mm

Applications with magnet - Recommended distances

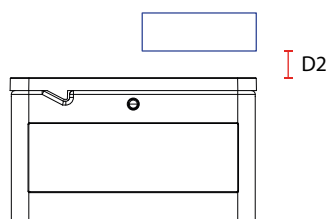
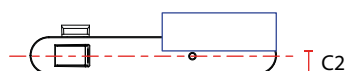
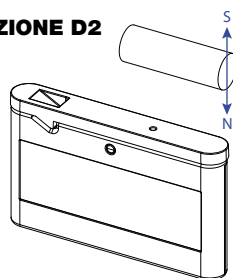
APPLICATIONS WITH DIAMETRIC MAGNET (Sensa M + MAG1030D)

POSIZIONE D1



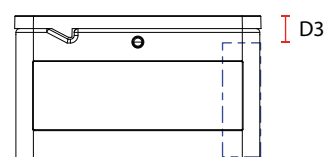
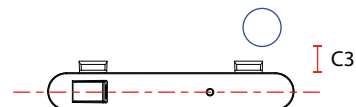
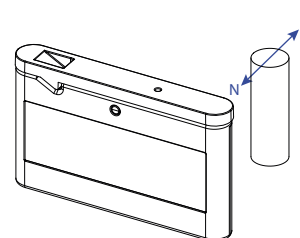
- C1: max 30mm
- D1: 0 mm

POSIZIONE D2



- C2: 0 mm
- D2: max 30mm

POSIZIONE D3

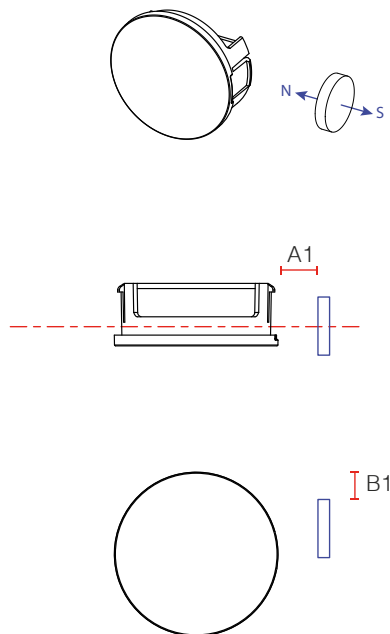


- C3: max 30mm
- D3: 0 mm

Applications with magnet - Recommended distances

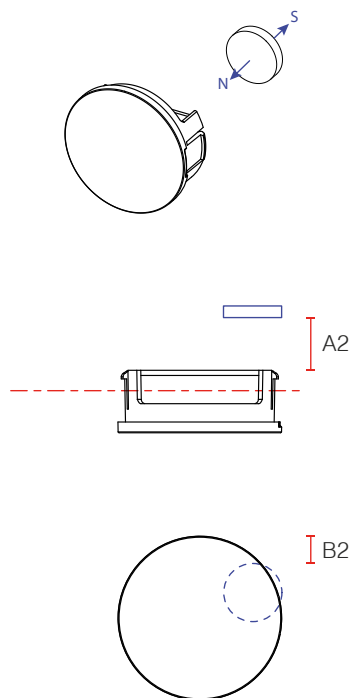
APPLICATIONS WITH AXIAL MAGNET (Sensa M + MAG153A or MAG225A)

POSIZIONE A1



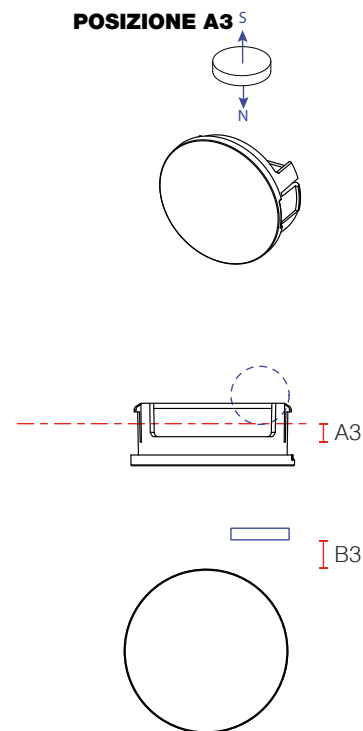
- A1 (with MAG153A): max 15mm
- A1 (with MAG225A): max 30mm
- B1: 5mm

POSIZIONE A2



- A2 (with MAG153A): max 15mm
- A2 (with MAG225A): max 30mm
- B2: 5mm

POSIZIONE A3

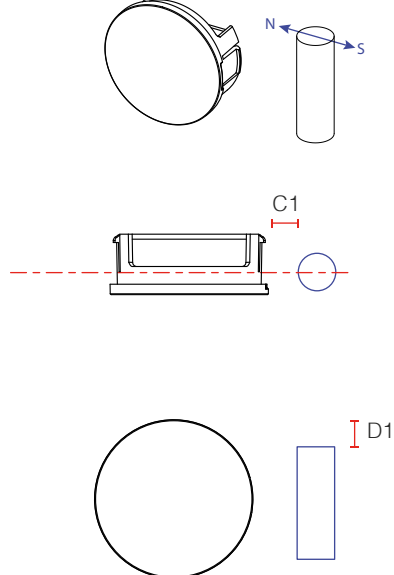


- A3: max 5mm
- B3 (with MAG153A): max 15mm
- B3 (with MAG225A): max 30mm

Applications with magnet - Recommended distances

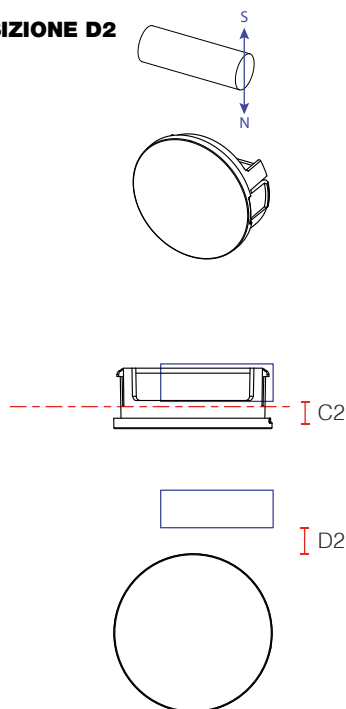
APPLICATIONS WITH DIAMETRIC MAGNET (Sensa M + MAG1030D)

POSIZIONE D1



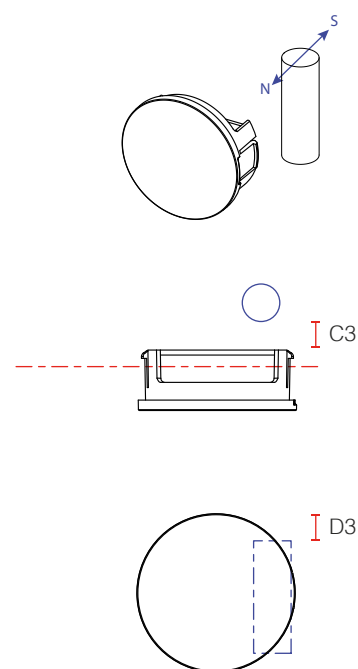
- C1: max 30mm
- D1: 0 mm

POSIZIONE D2



- C2: 0 mm
- D2: max 30mm

POSIZIONE D3



- C3: max 30mm
- D3: 0 mm

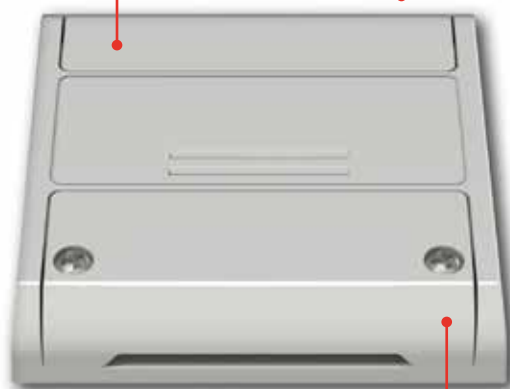
Led control 12-124V

PLANO

Extraflat control unit

Protective cover, set-up
interface with buttons
and LEDs

Ultra-slim dimensions
80x80x16mm










Thick, robust
technopolymer casing

Screw connectors, cable
gland and protective
cover

MULTIPLE OPTIONS FOR ANY REQUIREMENT OF CONTROL

- Three product lines based on the wished control modality
- . Plano RF for the radiofrequency wireless control
 - . Plano BT for radiofrequency control and direct smartphone control
 - . Plano One for the control through radiofrequency, wired push buttons, wi-fi and voice.

GUIDE TO THE RANGE - TYPE OF CONTROL

		"Plano" line (page 27)	"Plano-BT" line (page 28)	"Plano-ONE" line (page 30)
RADIO 	Radio transmitters	Yes	Yes	Yes
RADIO 	Radio sensors	Yes	Yes	Yes
WIRED 	Wired push button	No	No	Yes
APP BT 	App (BT)	No	Yes	No
APP WIF 	App (Wi-Fi)	No	No	Yes
CLOUD 	Remote control	No	No	Yes
VOICE 	Vocal control (Amazon and Google)	No	No	Yes



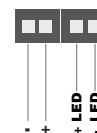
Plano RF



Control unit with dimmer function. 12 to 24Vdc power supply.
One output to manage LED with constant voltage 12-24Vdc,
max 5A.
Radio receiver 433.92MHz.

■ Code: **PLANO-V5**

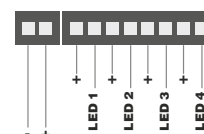
CONNECTION



Control unit with dimmer function for LEDs with constant
voltage. 12 to 24 Vdc power supply. 4 outputs, max 3A per
output and max 5A in total.
Radio receiver 433.92MHz.

■ Code: **PLANO-V5/4CH**

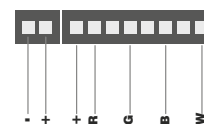
CONNECTION



Control unit with dimmer function and colour control for RGB
and RGBW LEDs with constant voltage. Color management
and pre-set dynamic cycles. 12 to 24Vdc power supply. 4
outputs, max 3A per output (R,G,B,W) and max 5A in total.
Radio receiver 433.92MHz.

■ Code: **PLANO-V5/RGBW**

CONNECTION



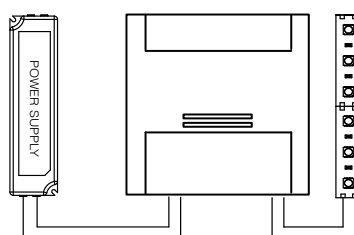
TYPICAL SYSTEM



Radio sensor



Radio transmitter



One or more control unit

TECHNICAL DATA

	Plano-V5	Plano-V5/4CH	Plano-V5/RGBW
Power supply	12/24Vdc	12/24Vdc	12/24Vdc
Output	1 output 5A	4 output max 3A (max 5A in total)	4 output max 3A (max 5A in total)
Type of load	One color led with constant voltage	One color led with constant voltage	RGB/W color led with constant voltage
No. programmable transmitters	20	20	20
Radio frequency	433.92MHz	433.92MHz	433.92MHz
Protection rating	IP20	IP20	IP20
Operating temperature	-20 +55 °C	-20 +55 °C	-20 +55 °C
Dimensions	80X80X h16mm	80X80X h16mm	80X80X h16mm

Led control 12-124V | Radio RF + App BT Oneblue

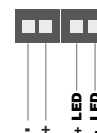
Plano BT



Control unit with dimmer function. 12 to 24Vdc power supply.
One output to manage LED with constant voltage 12-24Vdc,
max 5A.
Radio receiver 433.92MHz.
App BT "Oneblue" compatible

■ Code: **PLANO-V5-BT**

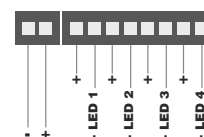
CONNECTION



Control unit with dimmer function for LEDs with constant voltage. 12 to 24 Vdc power supply. 4 outputs, max 3A per output and max 5A in total.
Radio receiver 433.92MHz.
BT app "Oneblue" compatible

■ Code: **PLANO-V5/4CH-BT**

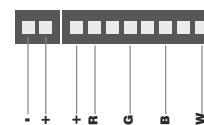
CONNECTION



Control unit with dimmer function and colour control for RGB and RGBW LEDs with constant voltage. Color management and pre-set dynamic cycles. 12 to 24Vdc power supply. 4 outputs, max 3A per output (R,G,B,W) and max 5A in total.
Radio receiver 433.92MHz.
App BT "Oneblue" compatible

■ Code: **PLANO-V5/RGBW-BT**

CONNECTION

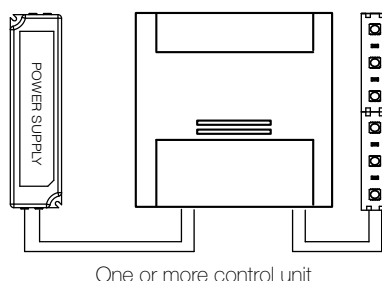


TECHNICAL DATA

	Plano-V5	Plano-V5/4CH	Plano-V5/RGBW
Power supply	12/24Vdc	12/24Vdc	12/24Vdc
Output	1 output 5A	4 output max 3A (max 5A in total)	4 output max 3A (max 5A in total)
Type of load	One color led with constant voltage	One color led with constant voltage	RGB/W color led with constant voltage
No. programmable transmitters	20	20	20
Radio frequency	433.92MHz	433.92MHz	433.92MHz
Protection rating	IP20	IP20	IP20
Operating temperature	-20 +55 °C	-20 +55 °C	-20 +55 °C
Dimensions	80X80X h16mm	80X80X h16mm	80X80X h16mm



TYPICAL SYSTEM



Plug and play application
"Oneblue"



iOS and Android App

It's possible to download for free The Nexta tech App OneBlue from Google Play and Apple store



PLUG AND PLAY SOLUTION

Thanks to the direct connection, the APP Oneblue allows an immediate and comfortable use without internet connection or registration.



SCENARIOS

The App Oneblue allows dimming command, colour control and tunable white light management. Creating lighting scenarios is absolutely easy and intuitive.



Led control 12-124V | Radio RF + App Onesmart + wired command + vocal + remote control

Plano Wi Fi



Universal control unit for constant voltage LEDs 12-24Vdc, selectable software:

1. Single color dimmer (4 synchronized outputs Max 5A/out, Max total 4 outs 10A),
2. CCT tunable white (1 out warm white Max 5A, 1 cold white Max 5A),
3. RGB (3 outs Max 5A/out, Max total 3 outs 8A),
4. RGBW (4 outs Max 5A/outs, Max total 10A).

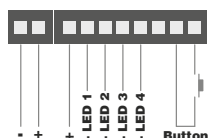
4 command mode:

1. wired push input (1 input), 2. RF radio, 3. Remote control Wi-Fi with App iOS e Android, 4. Voice control compatible Google Home e Alexa Amazon.
- Wi Fi app "smartone" compatible

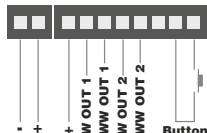
■ Code: **PLANO-ONE**

CONNECTION

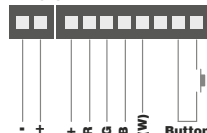
ONE COLOR MODE



CCT MODE



RGB(W) MODE



TECHNICAL DATA

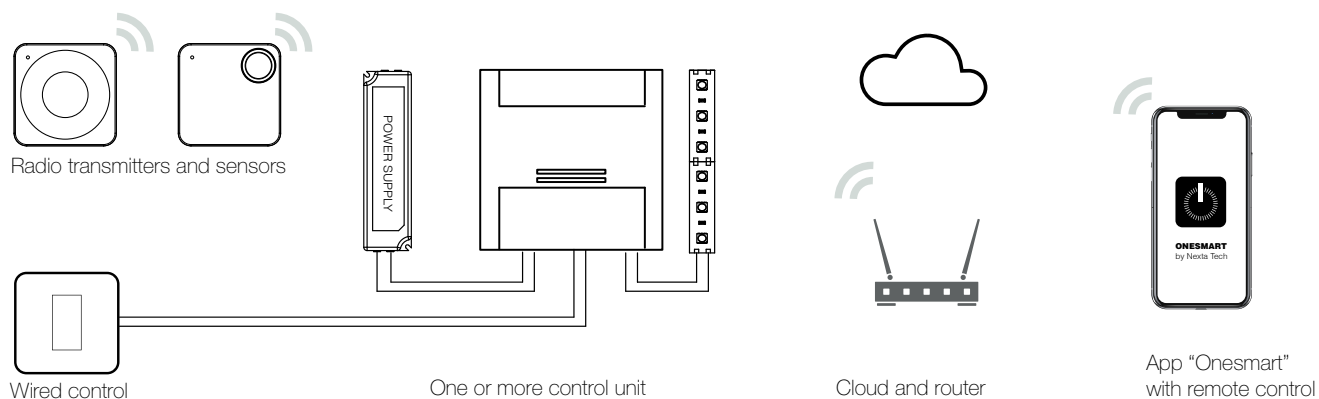
	SINGLE COLOR SET UP	TUNABLE WHITE SET UP	RGB OR RGBW SET UP
Type of load	4 line of single colour led with constant voltage	12/24Vdc	12/24Vdc
Type of control	Synchronized control of all the line	Synchronized control of all the line	Synchronized control of all the line
Output power	5A for each output (max 10A in total)	5A for each output (max 10A in total)	5A for each output (max 10A in total)
Customizable control of the light	-	MODE 1: two components balanced MODE 2: max power based to the set temperature	MODE 1: white "R+G+B" MODE 2: white "W" (4° out) MODE 3: white "R+G+B+W"

TECHNICAL DATA

Power supply	12/24Vdc
Output	4 output max 5A (max 10A in total)
Type of load	One colour led with constant voltage
No. programmable transmitters	20
Radio frequency	433.92MHz
Protection rating	IP20
Operating temperature	-20 +55 °C
Dimensions	80X80X h16mm



TYPICAL SYSTEM



APP iOS AND ANDROID

It's possible to download for free The Nexta tech App OneBlue from Google Play and Apple store



REMOTE CONTROL

With Wi-Fi connected through the cloud, the lights connected to the Plano-One can be remotely controlled.



SCENARIOS AND HOURLY PROGRAMS

The App OneSmart allows dimming command, color control and tunable white light management. Creating lighting scenarios and hourly programs is absolutely easy and intuitive



Audio control

EXTRASONIC

Surface sound system



SOUND TRANSMISSION THROUGH THE SURFACE

Extrasonic transforms objects in acoustic speakers through the vibration of the surface. Composed by a BT amplifier and a speaker to fix on the surface, it allows to realize completely invisible audio systems.



1 Connection speaker - amplifier and amplifier - 12V/20W power supply



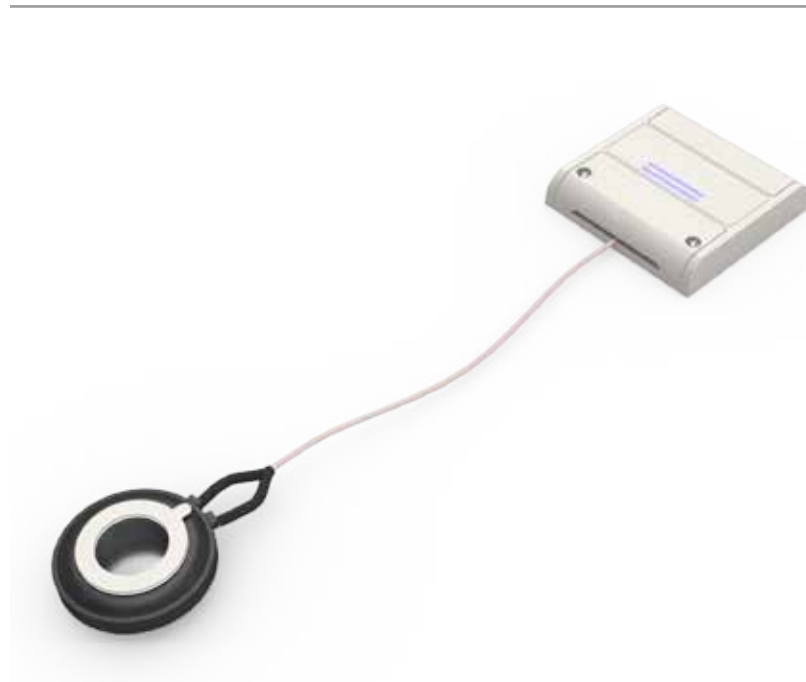
2 Speaker fixation on surface with adhesive tape or with metal bracket



3 BT connection and sound transmission to the amplifier



SONIC-100 - AVAILABLE VERSION



Code: **SONIC-100**

Sound amplification system through surface composed by:
1 BT amplifier 15W, 12Vdc power supply.
Dimensions: 80 x 80 x 16 mm.

1 Surface Speaker 15W, 4Ohm. Cable length 150 cm.
Dimensions: Diameter 52mm, h 20mm

Application

The quality of the sound depends on the type of surface. The maximum dimensions of the transmission surface depend on the material with which the object is constructed. The suggested materials are those with alveolar construction like panels MDF, cardboard and wood with which can be reached optimal results until 3 square meters.

ACCESSORIES



PS-1220

Power supply
230Vac-12Vdc, 20W.



PLUG-1220

Plug power supply
230Vac-12Vdc, 20W.



ST-S100

Optional metal fixation
bracket for speaker S100.



CB-S100/400

Optional connection cable,
400 cm length.



Discover Extrasonic system on the Youtube channel Nexta tech



Led control 12-124V

Linear

Profile control unit

Miniaturized wired touch controller for Led profiles.



TECHNICAL DATA

	PRO-DIM	PRO-CCT
Power supply	12/24Vdc	12/24Vdc
Output	1 output max 3A	2 output max 3A (max 6A total)
Type of load	One color led with costant voltage	CCT led with costant voltage
Signal led color	Blue	Blue
Protection rating	IP20	IP20
Operating temperature	-20 +55 °C	-20 +55 °C
Dimensions	50X10X h10mm	45X10X h10mm

AVAILABLE VERSIONS

LINEAR-TDIM

Control unit with dimmer function for costant voltage LEDs.
12-24Vdc, max 3A

LINEAR-TCCT

Control unit with dimmer and cct function for costant voltage LEDs.
12-24Vdc, max 3A for channel (6A in total)



www.nexta-tech.com



DISTRIBUIDOR EXCLUSIVO PARA ESPAÑA:
Ctra. Masía del Juez, n27, Km1 46909 Torrent (Valencia) Spain
info@koalacomponents.com
tel: 963 974 039
www.koalacomponents.com



PASSION
DRIVES
INNOVATION